

11166 FAIRFAX BOULEVARD

PREMIER LOCATION IN FAIRFAX, VA 22030



- On-site engineer
- Direct access to the 1C & 2B Metro Bus routes
- Bank on-site
- Easy access to Route 50, Route 29, and I-66
- Deli on-site
- Free surface parking

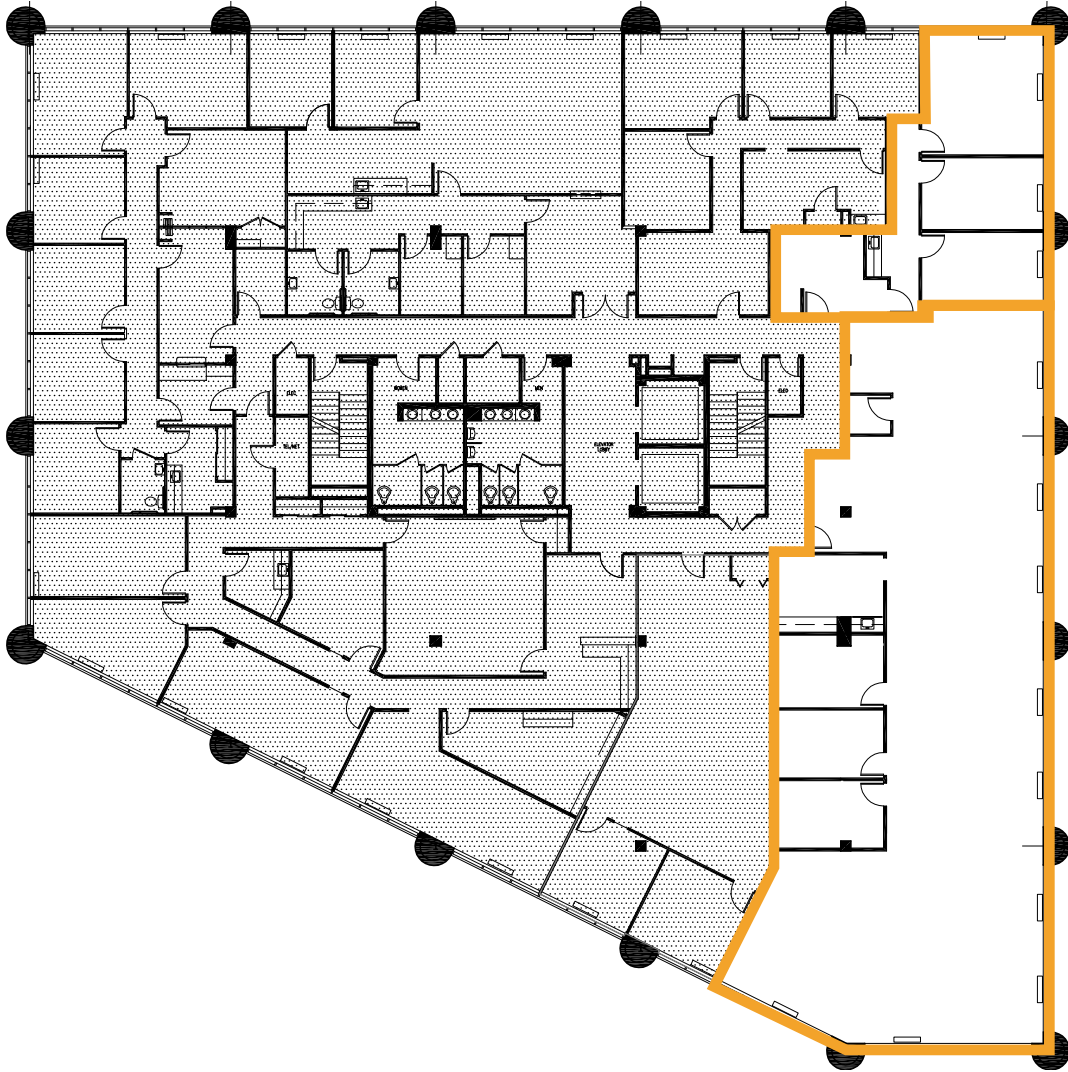
Alan Asman
703. 749. 9464
alan.asman@transwestern.com

Bernie McKeever, Jr.
703. 749. 9462
bernard.mckeever@transwestern.com

Cole McCarthy
703. 749. 9401
cole.mccarthy@transwestern.com

2ND FLOOR

Suite 200 and Suite 203 Contiguous for a Total of 4,867

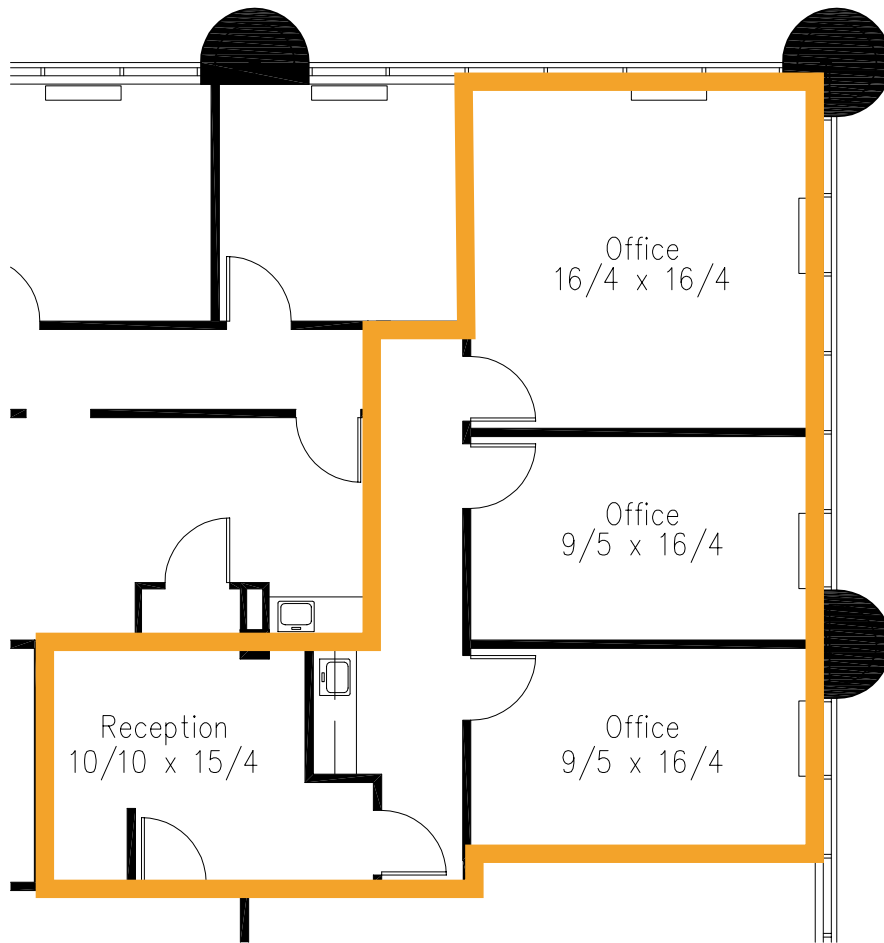


Suite 203
1,033 SF
Available
Immediately

Suite 200
3,834 SF
Available
Immediately

2ND FLOOR

Suite 200 and Suite 203 Contiguous for a Total of 4,867



Suite 203

1,033 SF

Available Immediately

3RD FLOOR



Suite 305

2,293 SF

Available Immediately





TRANSWESTERN

REAL ESTATE
SERVICES

Alan Asman

703. 749. 9464

alan.asman@transwestern.com

Bernie McKeever, Jr.

703. 749. 9462

bernard.mckeever@transwestern.com

Cole McCarthy

703. 749. 9401

cole.mccarthy@transwestern.com

7900 Tysons One Place, Suite 600
McLean, VA 22102 | 703.821.0040
transwestern.com