

425 S. Main St.

Anthony, TX 79821

Property Features

- Anchored by High Volume Grocery Store
- High Volume Traffic
- Corner Pad Sites
- High Visibility
- Traffic Count: 11,900 Average Daily Traffic
- Large daytime employment in the area with 3 school district headquarters, and La Tuna Federal Penitentiary



For more information:

Max Prestridge

915 345 2095 • mprestridge@naielpaso.com

For Lease

Ground Lease Or Build To Suit



Property Summary

Available SF: 56,000 SF

Lease Rate: Call Broker

Lot Size: 1.29 Acres

Property Overview

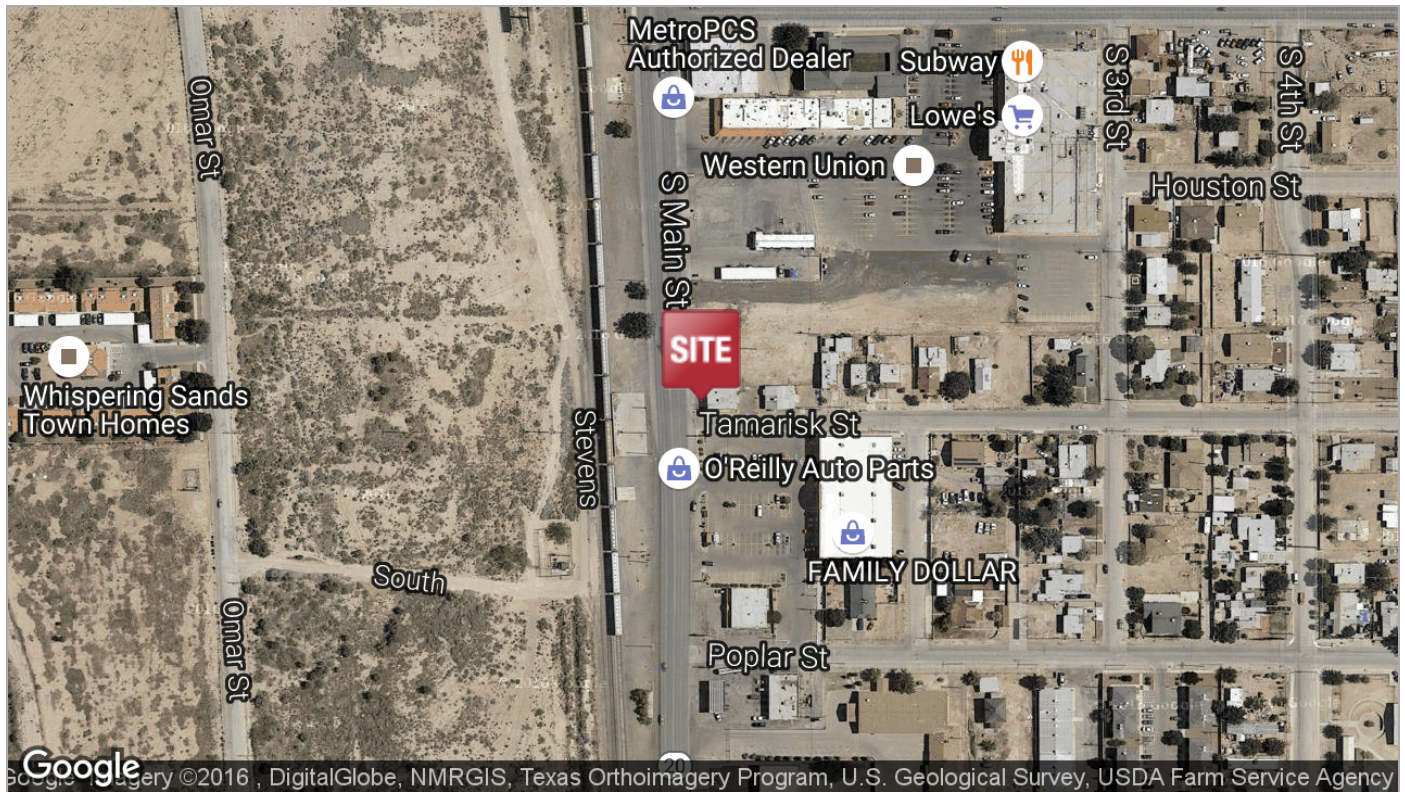
Pad sites anchored by Lowe's La Feria Grocery store and retail plaza.

Location Overview

Pad Sites on Camino Real Shopping Center

For Lease

Ground Lease Or Build To Suit



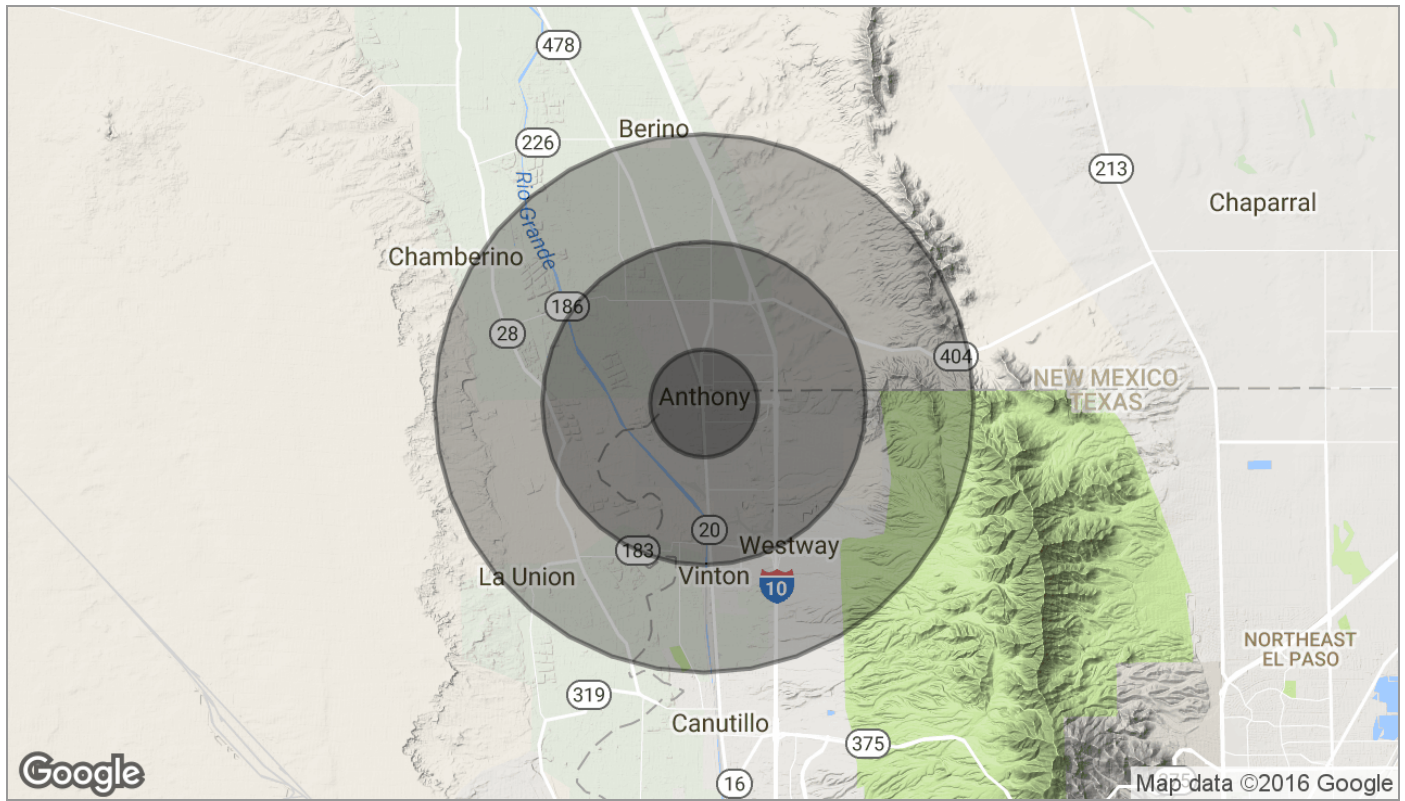
For Lease

Ground Lease Or Build To Suit



For Lease

Ground Lease Or Build To Suit



Population	1 Mile	3 Miles	5 Miles
TOTAL POPULATION	4,823	20,933	29,265
MEDIAN AGE	29.6	29.0	29.1
MEDIAN AGE (MALE)	30.8	29.4	28.8
MEDIAN AGE (FEMALE)	26.8	28.0	29.0
Households & Income	1 Mile	3 Miles	5 Miles
TOTAL HOUSEHOLDS	1,225	5,719	8,136
# OF PERSONS PER HH	3.9	3.7	3.6
AVERAGE HH INCOME	\$32,918	\$33,674	\$35,427
AVERAGE HOUSE VALUE		\$100,988	\$102,458
Race	1 Mile	3 Miles	5 Miles
% WHITE	75.3%	77.3%	77.0%
% BLACK	2.4%	1.5%	1.1%
% ASIAN	0.2%	0.1%	0.1%
% HAWAIIAN	0.1%	0.0%	0.0%
% INDIAN	0.7%	0.5%	0.6%
% OTHER	18.8%	18.8%	19.6%
Ethnicity	1 Mile	3 Miles	5 Miles
% HISPANIC	89.1%	90.6%	90.3%

* Demographic data derived from 2010 US Census