



# For Lease

3700 & 3708 Gallatin Pike, Nashville, TN 37216

**Miller Fitts**

615 928 5324

[miller.fitts@jll.com](mailto:miller.fitts@jll.com)

**Gary Shanks**

615 928 5323

[gary.shanks@jll.com](mailto:gary.shanks@jll.com)

# For Lease

## Address

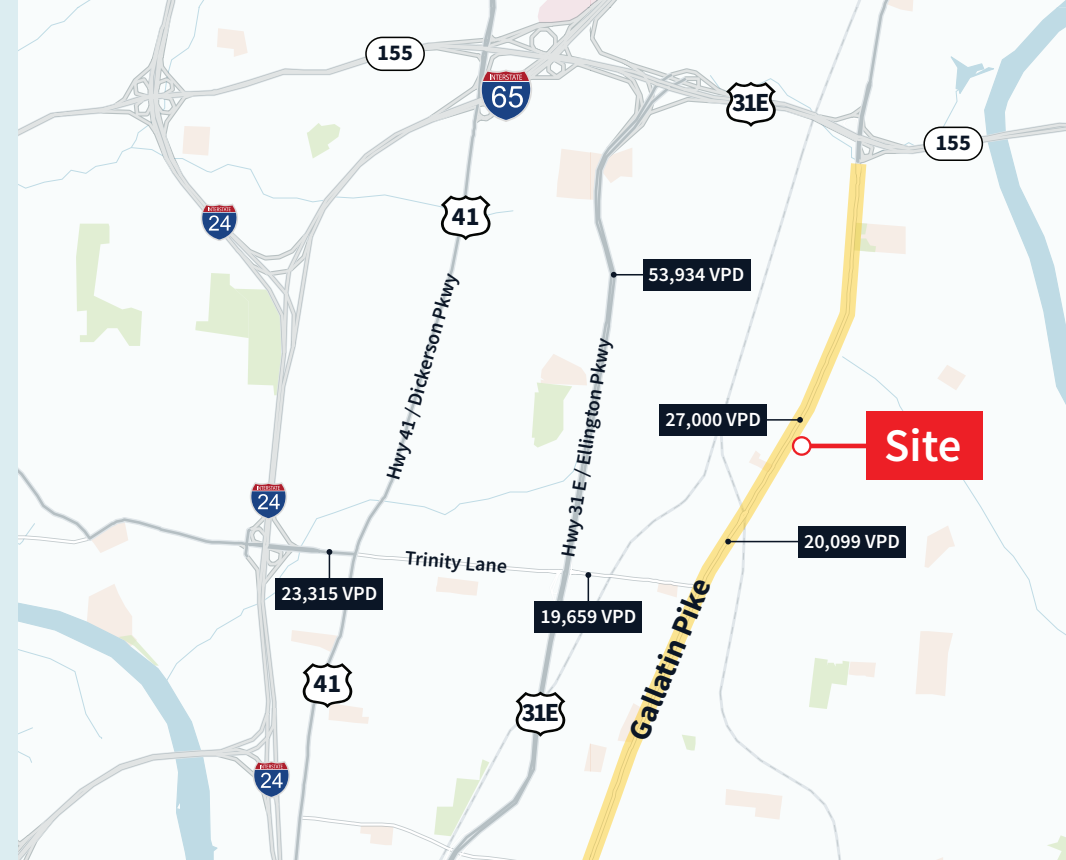
[3700 & 3708 Gallatin Pike, Nashville, TN 37216](#)

## Site details

- ±2,564 SF former fast-food restaurant with drive-thru
- ±1.09-acre lot
- 51 parking spaces
- Over 200' frontage along Gallatin Pike, which sees over 27,000 vehicles per day
- Two points of ingress/egress off Gallatin Pike and two points of ingress/egress off McChesney Avenue
- Pylon signage available
- MUL-A Zoning

## Price

Contact brokers for pricing



## Demographics

### 2025 Population

1-mile	3-miles	5-miles
9,159	69,326	162,137

### 2025 Total Households

1-mile	3-miles	5-miles
9,284	73,499	176,985

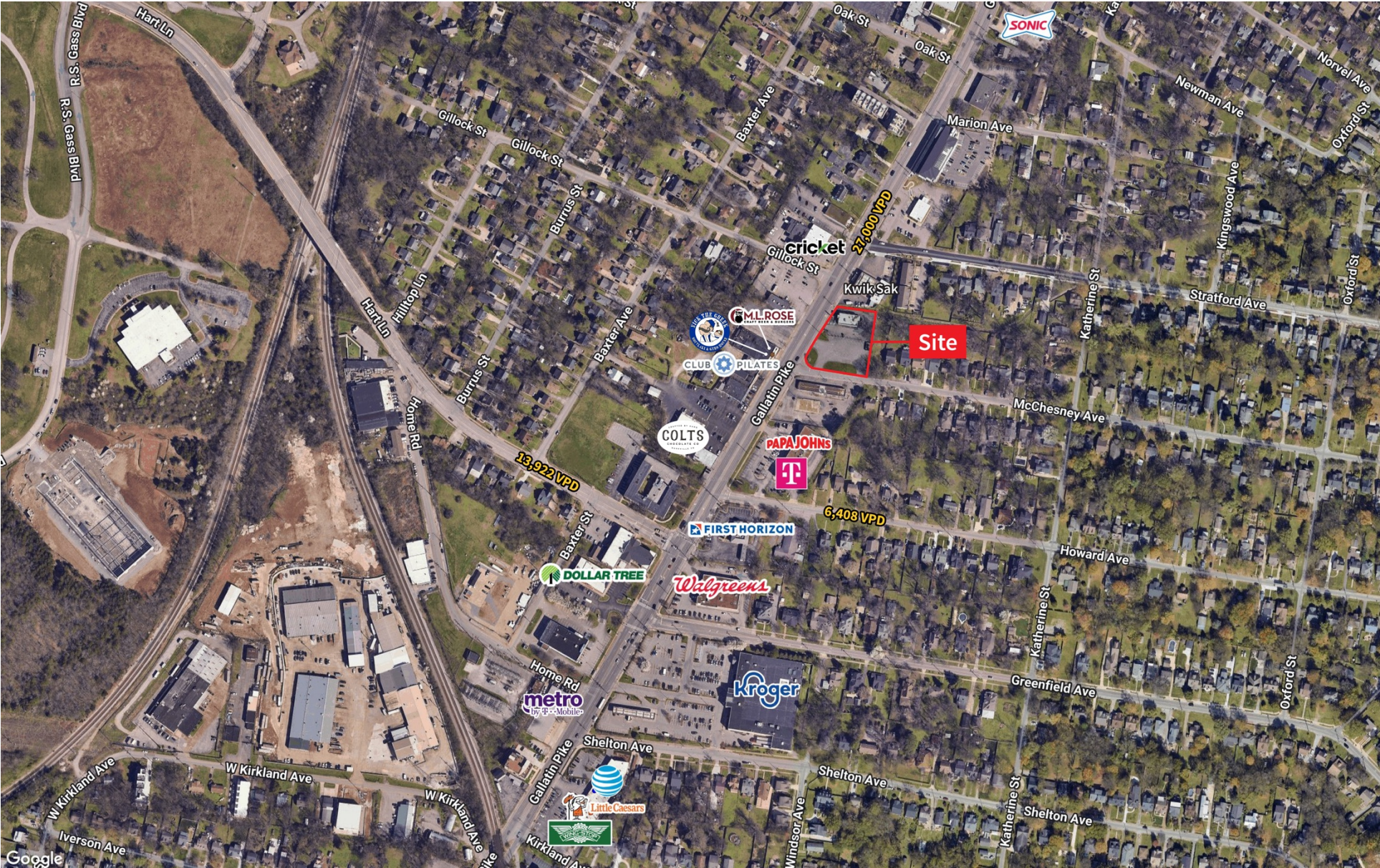
### 2025 Total Daytime Population

1-mile	3-miles	5-miles
4,257	30,355	71,253

### 2025 Avg Household Income

1-mile	3-miles	5-miles
4,250	31,744	78,546

# Trade Area Overview



# Contact

**Miller Fitts**

615 928 5324  
miller.fitts@jll.com

**Gary Shanks**

615 928 5323  
gary.shanks@jll.com

Although information has been obtained from sources deemed reliable, JLL does not make any guarantees, warranties or representations, express or implied, as to the completeness or accuracy as to the information contained herein. Any projections, opinions, assumptions or estimates used are for example only. There may be differences between projected and actual results, and those differences may be material. JLL does not accept any liability for any loss or damage suffered by any party resulting from reliance on this information. If the recipient of this information has signed a confidentiality agreement with JLL regarding this matter, this information is subject to the terms of that agreement. ©2025 Jones Lang LaSalle Brokerage, Inc. All rights reserved.

