



±34,156 - ±75,743 SF CLASS A INDUSTRIAL FOR LEASE | CROSS DOCK LOADING

EASTPORT IV

5601-5699 Eastport Blvd.
Richmond, Virginia 23231



CUSHMAN &
WAKEFIELD

THALHIMER

EASTPORT IV

5601-5699 EASTPORT BLVD.

Property Features

EASTPORT is a 98-acre light industrial/warehouse/distribution park strategically located in Greater Richmond, Virginia near the intersection of Charles City Road and East Laburnum Avenue, close to the Richmond International Airport and just minutes to I-64, I-295 and I-95.

Eastport can accommodate space needs from 4,000 to 250,000 SF with flexible spaces finished to meet your company's needs.

Suite 5601

Available Now

±34,156 SF

4,121 SF Office

7 docks total; 2 in back, 5 up front,
4 with pit levelers (mechanical)

Electric: 800 amp, 480Y/277 3 phase 4 wire

Suite 5623

Available 7/31/26

±41,587 SF

4,958 SF Office

9 docks with levelers

Cross dock

Building Size: 150,000 Total SF

Total Available SF: ±34,156 - ±75,743 SF

Year Built: 1996

Zoning: M-2

Clear Height: 26' clear

Columns: 36' x 40'

Sprinkler: ESFR

Lighting: LED



EASTPORT IV

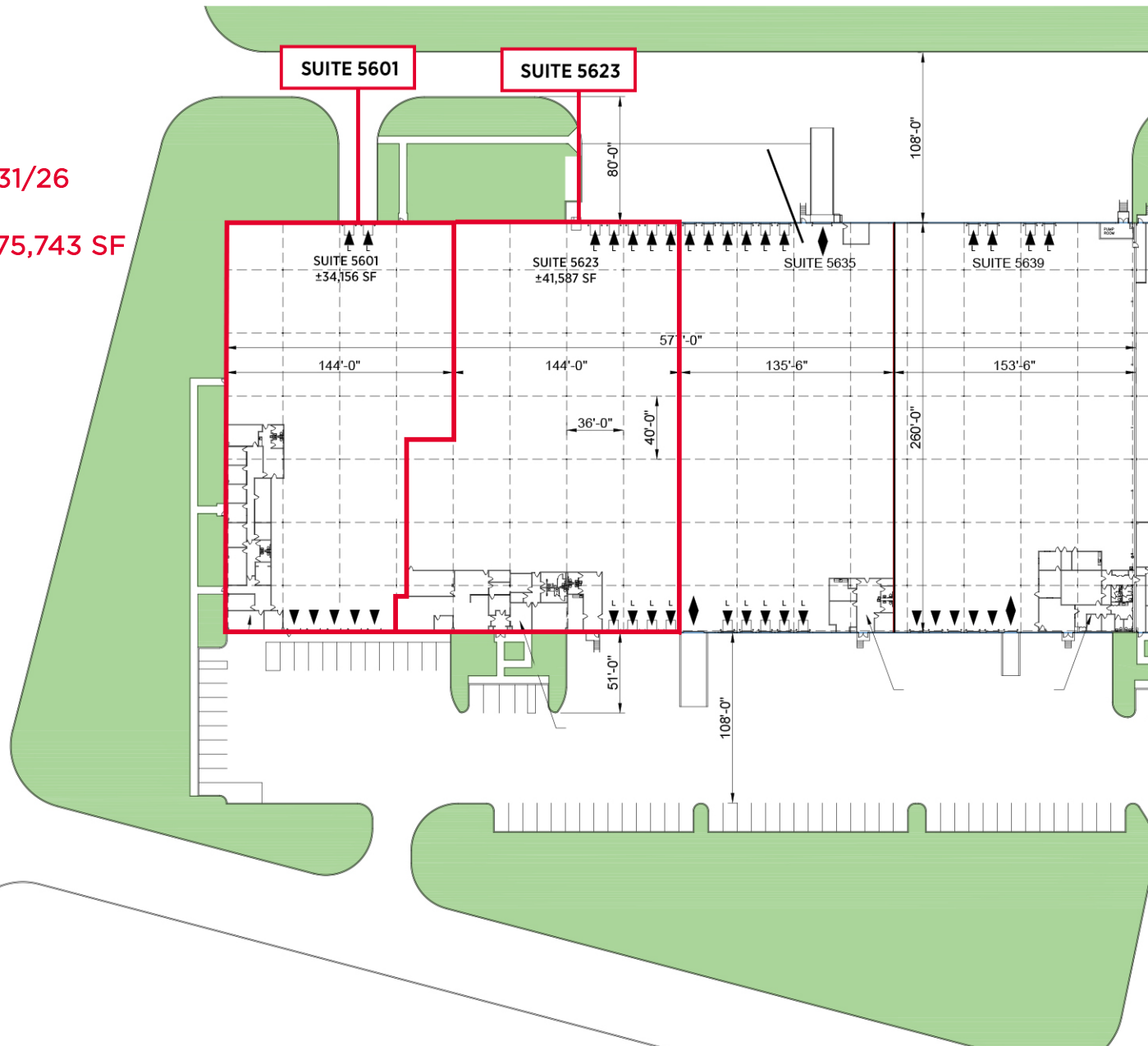
5601-5699 EASTPORT BLVD.

SITE PLAN

Suite 5601
± 34,156 SF Available

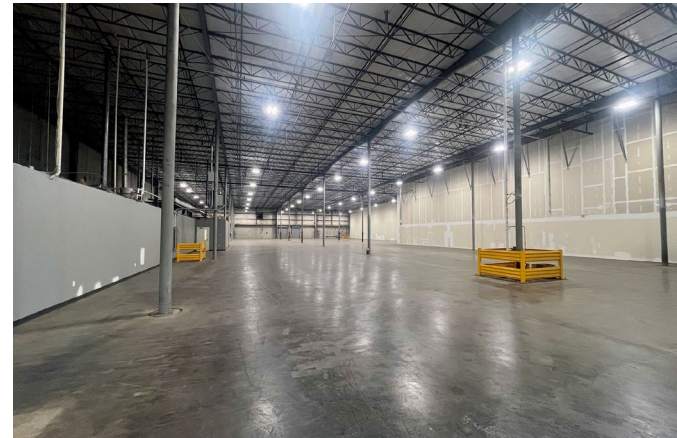
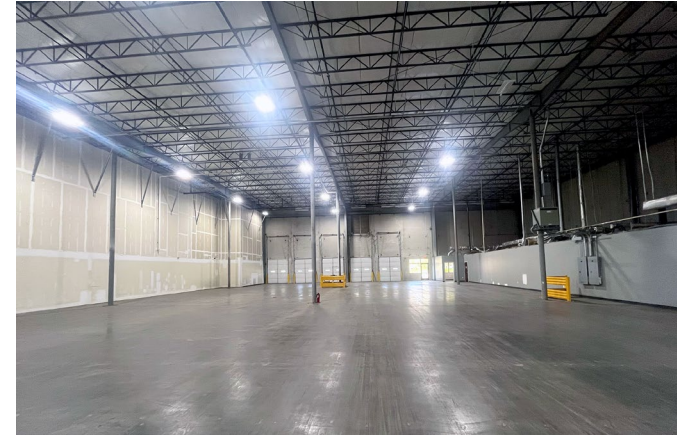
Suite 5623
±41,587 SF Available 7/31/26

Can be combined for ±75,743 SF



EASTPORT IV

5601-5699 EASTPORT BLVD.





FOR MORE INFORMATION, CONTACT:

GRAHAM STONEBURNER, SIOR
Senior Vice President
804 344 7159
graham.stoneburner@thalhimer.com

DANNY HOLLY
Senior Vice President
804 697 3552
danny.holly@thalhimer.com

Thalhimer Center
11100 W. Broad Street
Glen Allen, VA 23060
thalhimer.com

Independently Owned and Operated / A Member of the Cushman & Wakefield Alliance

Cushman & Wakefield | Thalhimer © 2025. No warranty or representation, express or implied, is made to the accuracy or completeness of the information contained herein, and same is submitted subject to errors, omissions, change of price, rental or other conditions, withdrawal without notice, and to any special listing conditions imposed by the property owner(s). As applicable, we make no representation as to the condition of the property (or properties) in question.



**CUSHMAN &
WAKEFIELD**

THALHIMER