

# FOOD PROCESSING FACILITY FOR SALE & LEASE

## 1201 HUMMEL AVE | LEMOYNE, PA 17043

### **Presented By:**

**Ida McMurray,  
CCIM, SIOR**

PRINCIPAL & SENIOR ADVISOR  
imcmurray@capstonecre.com  
O: 717.820.1127 X701  
C: 717.443.5500

### **Matt Hoover**

PRINCIPAL & MANAGING DIRECTOR  
mhoover@capstonecre.com  
O: 717.820.1127 X702  
C: 717.329.1211

### **Michael Kushner, CCIM**

SENIOR ADVISOR  
mkushner@capstonecre.com  
O: 717.820.1127 X707  
C: 717.991.6384





# PROPERTY OVERVIEW

1201 Hummel Ave | Lemoyne, PA 17043

## PROPERTY DESCRIPTION

Capstone Commercial is pleased to announce for sale or lease the property at 1201 Hummel Ave, in Lemoyne, Pennsylvania.

This newly constructed industrial facility offers approximately 52,600 SF of state-of-the-art refrigerated and cold storage space. Designed specifically for food processing and cold chain users, the building features insulated metal panel construction, LED lighting, a dry sprinkler system, and heated concrete floors in the freezer area. Larkin brand refrigeration systems are installed and the building's mechanicals remain under warranty.

The freestanding building totals 52,600 square feet on 2.63 acres, and the current owners will retain or lease back approximately 6,000 square feet. The building is fully powered with 3-phase electric service, including 2,000 amp 480V and 120/208/460V capacity. Public utilities, including water, sewer, and gas, are in place. There are 15 surface parking spaces on site, including one handicap space, and 7 on-street parking spaces. Zoned Commercial General and with one drive-in bay and docks, the site supports a wide range of uses.

Located in Cumberland County with access to key distribution corridors, this facility offers an excellent opportunity for occupiers or investors in need of modern cold storage infrastructure.

Price not disclosed - call listing broker for details.

## PROPERTY HIGHLIGHTS

- State of the art food processing/sub zero freezer space
- Larkin refrigerator brand cooler
- Brand new building - mechanicals are under warranty
- For sale or lease



## OFFERING SUMMARY

Sale Price:	Price Not Disclosed
Lease Rate:	\$27.00 SF/yr (NNN)
Lot Size:	2.63 Acres
Building Size:	52,600 SF
APN:	12-22-0824-004
Zoning:	Industrial Commercial
Municipality:	Lemoyne Boro
County:	Cumberland



**Ida McMurray, CCIM, SIOR**

PRINCIPAL & SENIOR ADVISOR  
imcmurray@capstonecre.com

O: 717.820.1127 X701 C: 717.443.5500

**Matt Hoover**

PRINCIPAL & MANAGING DIRECTOR  
mhoover@capstonecre.com

O: 717.820.1127 X702 C: 717.329.1211

**Michael Kushner, CCIM**

SENIOR ADVISOR  
mkushner@capstonecre.com

O: 717.820.1127 X707 C: 717.991.6384

# PROPERTY DETAILS

1201 Hummel Ave | Lemoyne, PA 17043

Sale Price

PRICE NOT DISCLOSED

Lease Rate

\$27.00 SF/YR (NNN)

## BUILDING INFORMATION

Building Size	52,600 SF
Number of Dock High Doors	4
Number of Drive in Bays	1
Number of Floors	1
Year Built	2025
Free Standing	Yes
Number of Buildings	1
Parking	15 off-street spaces + 7 on-street
Ceilings	Insulated panel
Floors	Concrete - heated in freezer area
Construction	Insulated metal panel
Lighting	LED
Walls	Insulated metal panel
Sprinklers	Dry system
Additional Note	Brand new building - mechanicals under warranty

## LOCATION INFORMATION

Street Address	1201 Hummel Ave
City, State, Zip	Lemoyne, PA 17043
County	Cumberland
Township	Lemoyne Boro

## PROPERTY INFORMATION

Property Type	Industrial
Property Subtype	Refrigerated/Cold Storage
Zoning	Industrial Commercial
Lot Size	2.63 Acres
APN #	12-22-0824-004
Lot Dimensions	674 x 193 ft
Power	Yes
Rail Access	No

## UTILITIES & AMENITIES

Restrooms	2
Gas / Propane	Yes
Water	4 in main line
Sewer	Public
Electric	3 phase 2,000 amp 480 V + 3 phase 120/208/460 V
Equipment	Larkin refrigerator brand cooler



**Ida McMurray, CCIM, SIOR**

PRINCIPAL & SENIOR ADVISOR  
imcmurray@capstonecre.com  
O: 717.820.1127 X701 C: 717.443.5500

**Matt Hoover**

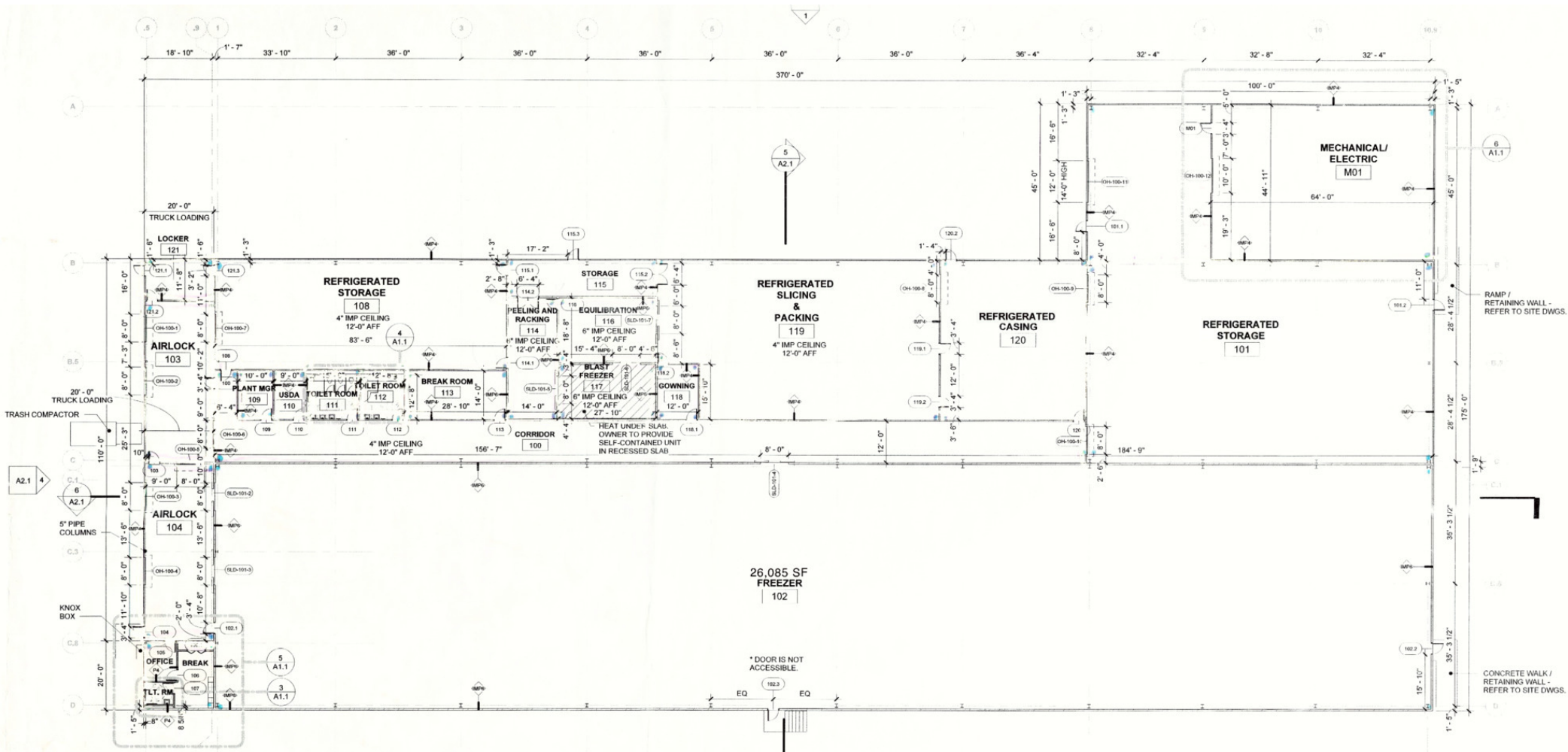
PRINCIPAL & MANAGING DIRECTOR  
mhoover@capstonecre.com  
O: 717.820.1127 X702 C: 717.329.1211

**Michael Kushner, CCIM**

SENIOR ADVISOR  
mkushner@capstonecre.com  
O: 717.820.1127 X707 C: 717.991.6384

# FLOORPLAN

1201 Hummel Ave | Lemoyne, PA 17043



**CAPSTONE**  
COMMERCIAL

**Ida McMurray, CCIM, SIOR**  
PRINCIPAL & SENIOR ADVISOR  
imcmurray@capstonecre.com  
O: 717.820.1127 X701 C: 717.443.5500

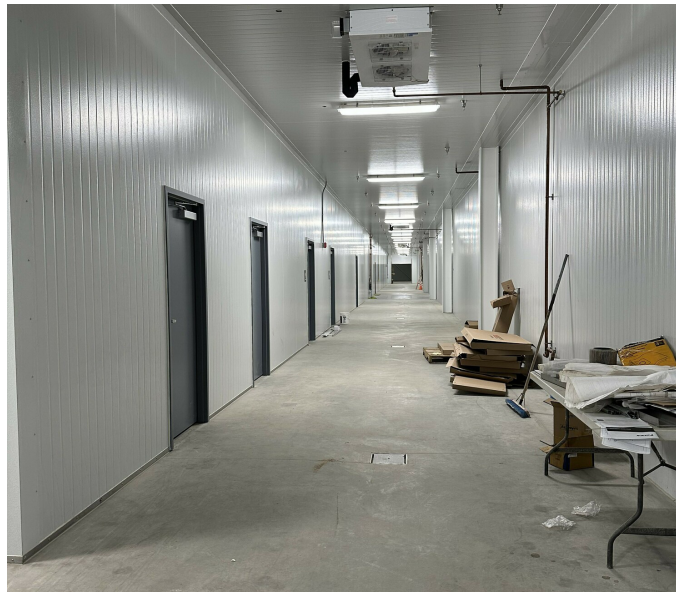
**Matt Hoover**  
PRINCIPAL & MANAGING DIRECTOR  
mhoover@capstonecre.com  
O: 717.820.1127 X702 C: 717.329.1211

**Michael Kushner, CCIM**  
SENIOR ADVISOR  
mkushner@capstonecre.com  
O: 717.820.1127 X707 C: 717.991.6384



# INTERIOR PHOTOS

1201 Hummel Ave | Lemoyne, PA 17043



**Ida McMurray, CCIM, SIOR**

PRINCIPAL & SENIOR ADVISOR

[imcmurray@capstonecre.com](mailto:imcmurray@capstonecre.com)

O: 717.820.1127 X701 C: 717.443.5500

**Matt Hoover**

PRINCIPAL & MANAGING DIRECTOR

[mhoover@capstonecre.com](mailto:mhoover@capstonecre.com)

O: 717.820.1127 X702 C: 717.329.1211

**Michael Kushner, CCIM**

SENIOR ADVISOR

[mkushner@capstonecre.com](mailto:mkushner@capstonecre.com)

O: 717.820.1127 X707 C: 717.991.6384



# PARCEL

1201 Hummel Ave | Lemoyne, PA 17043



**CAPSTONE**  
COMMERCIAL

**Ida McMurray, CCIM, SIOR**

PRINCIPAL & SENIOR ADVISOR  
imcmurray@capstonecre.com

O: 717.820.1127 X701 C: 717.443.5500

**Matt Hoover**

PRINCIPAL & MANAGING DIRECTOR  
mhoover@capstonecre.com

O: 717.820.1127 X702 C: 717.329.1211

**Michael Kushner, CCIM**

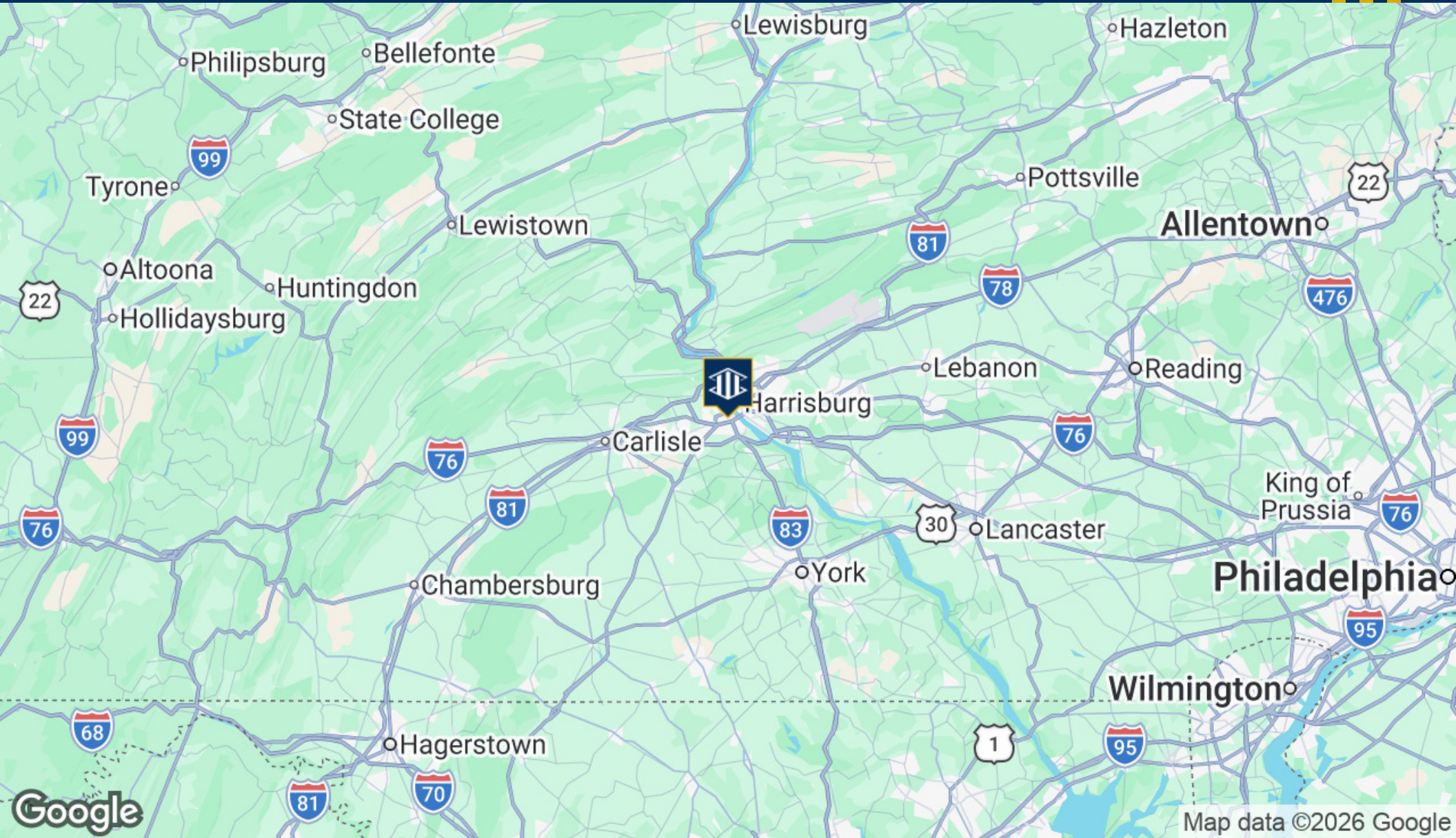
SENIOR ADVISOR  
mkushner@capstonecre.com

O: 717.820.1127 X707 C: 717.991.6384



# AREA OVERVIEW

1201 Hummel Ave | Lemoyne, PA 17043



**CAPSTONE**  
COMMERCIAL

**Ida McMurray, CCIM, SIOR**

PRINCIPAL & SENIOR ADVISOR  
imcmurray@capstonecre.com

O: 717.820.1127 X701 C: 717.443.5500

**Matt Hoover**

PRINCIPAL & MANAGING DIRECTOR  
mhoover@capstonecre.com

O: 717.820.1127 X702 C: 717.329.1211

**Michael Kushner, CCIM**

SENIOR ADVISOR  
mkushner@capstonecre.com

O: 717.820.1127 X707 C: 717.991.6384



# DEMOGRAPHICS

1201 Hummel Ave | Lemoyne, PA 17043

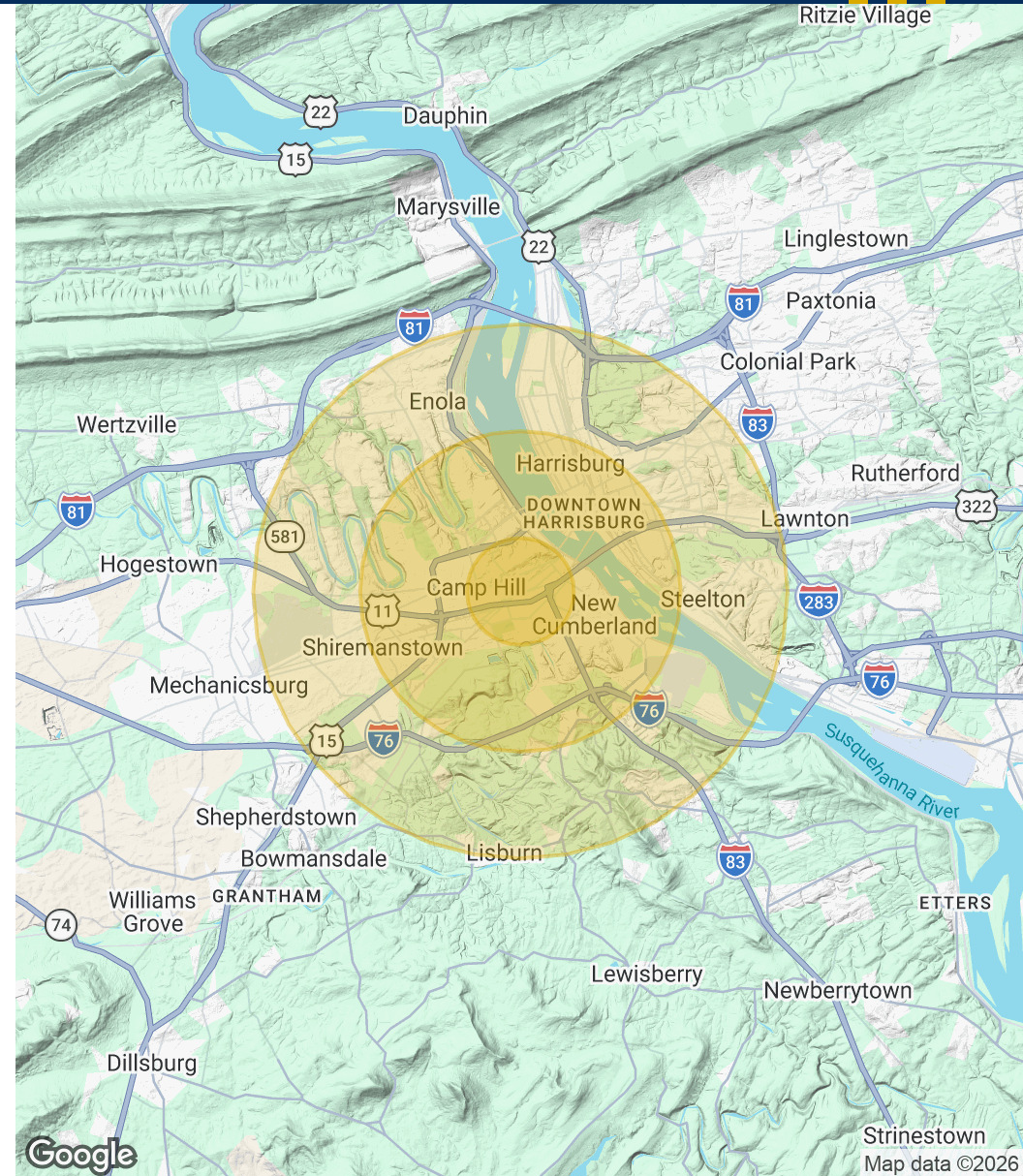
## POPULATION

	1 MILE	3 MILES	5 MILES
Total Population	11,330	81,641	198,249
Average Age	42	41	41
Average Age (Male)	41	40	40
Average Age (Female)	43	41	42

## HOUSEHOLDS & INCOME

	1 MILE	3 MILES	5 MILES
Total Households	4,993	34,672	81,999
# of Persons per HH	2.3	2.4	2.4
Average HH Income	\$104,346	\$98,631	\$98,533
Average House Value	\$272,829	\$255,410	\$247,503

Demographics data derived from AlphaMap



**Ida McMurray, CCIM, SIOR**

PRINCIPAL & SENIOR ADVISOR  
imcmurray@capstonecre.com

O: 717.820.1127 X701 C: 717.443.5500

**Matt Hoover**

PRINCIPAL & MANAGING DIRECTOR  
mhoover@capstonecre.com

O: 717.820.1127 X702 C: 717.329.1211

**Michael Kushner, CCIM**

SENIOR ADVISOR  
mkushner@capstonecre.com

O: 717.820.1127 X707 C: 717.991.6384



# ADVISOR BIO

1201 Hummel Ave | Lemoyne, PA 17043



## **Ida McMurray** **CCIM, SIOR**

Principal & Senior Advisor

[imcmurray@capstonecre.com](mailto:imcmurray@capstonecre.com)

(O) 717.820.1127 x701

(C) 717.443.5500

Ida started in the commercial real estate industry in 1995 as a property marketing specialist, which contributes to her strong understanding of the expectations of clients and customers. Building on 30 years of experience in sales, leasing, investment analysis and consulting, she is qualified to offer advice and services which go beyond the basics. Ida is well versed in sales and leasing of the industrial, commercial, office, retail, and land development market segments. Her attention to detail and in-depth market knowledge have earned the respect of clients and colleagues, allowing her to develop and maintain strong, long-term relationships both locally and nationwide. Additionally, Ida is intently focused on meeting client objectives, which enables her to expedite results with favorable outcomes for all parties.

Capstone Commercial is a values-driven commercial real estate firm with over 80 years of collective experience. We believe in a synergistic, client-centered approach that reinforces our team's ability to provide you with unparalleled value and expertise. Capstone offers comprehensive services to guide clients through all phases of the commercial real estate cycle, including investment analysis & sales, development land sales, specialty-use commercial property sales, business brokerage, and commercial or industrial sales and leasing. The expert advisors at Capstone Commercial include CCIM designees, Associate Brokers, Negotiation Experts, and GREEN Certified Realtors. With our unusually collaborative and supportive environment, the team is able to create a greater positive impact through the merging of their varied and unique skill sets. Capstone embodies the ideals of integrity, transparency, collaboration, and honesty. Our fresh take on the industry is setting a new standard where ethics are prioritized before profit. The well-being of our clients, associates, and communities is the center of our focus in everything we do.



### **Ida McMurray, CCIM, SIOR**

PRINCIPAL & SENIOR ADVISOR  
[imcmurray@capstonecre.com](mailto:imcmurray@capstonecre.com)

O: 717.820.1127 X701 C: 717.443.5500

### **Matt Hoover**

PRINCIPAL & MANAGING DIRECTOR  
[mhoover@capstonecre.com](mailto:mhoover@capstonecre.com)

O: 717.820.1127 X702 C: 717.329.1211

### **Michael Kushner, CCIM**

SENIOR ADVISOR  
[mkushner@capstonecre.com](mailto:mkushner@capstonecre.com)

O: 717.820.1127 X707 C: 717.991.6384

# ADVISOR BIO

1201 Hummel Ave | Lemoyne, PA 17043



## Matt Hoover

Principal & Managing Director

mhoover@capstonecre.com

(O) 717.820.1127 x702

(C) 717.329.1211

Since entering commercial real estate in 2002, Matt has negotiated over 500 deals across 20+ states, winning him several national awards based on annual deal volume and recognition as a top producer. He specializes in corporate leasing strategy, occupier services, & multi-market buyer/tenant representation for clients that are growing their real estate portfolio across the United States. Prior to re-entering brokerage in 2020, Matt served as the Director of Commercial Real Estate Operations for 12 years with a large regional developer in the Mid-Atlantic, where he oversaw all aspects of asset management, facilities services, property sales, and leasing. His extensive experience and knowledge allows him to thoughtfully guide clients through every stage of the commercial real estate lifecycle. Originally from Lancaster, Matt graduated from Messiah College with a degree in International Relations and was part of the International Business Institute Economics Program.

Capstone Commercial is a values-driven commercial real estate firm with over 80 years of collective experience. We believe in a synergistic, client-centered approach that reinforces our team's ability to provide you with unparalleled value and expertise. Capstone offers comprehensive services to guide clients through all phases of the commercial real estate cycle, including investment analysis & sales, development land sales, specialty-use commercial property sales, business brokerage, and commercial or industrial sales and leasing. The expert advisors at Capstone Commercial include CCIM designees, Associate Brokers, Negotiation Experts, and GREEN Certified Realtors. With our unusually collaborative and supportive environment, the team is able to create a greater positive impact through the merging of their varied and unique skill sets. Capstone embodies the ideals of integrity, transparency, collaboration, and honesty. Our fresh take on the industry is setting a new standard where ethics are prioritized before profit. The well-being of our clients, associates, and communities is the center of our focus in everything we do.



### Ida McMurray, CCIM, SIOR

PRINCIPAL & SENIOR ADVISOR  
imcmurray@capstonecre.com

O: 717.820.1127 X701 C: 717.443.5500

### Matt Hoover

PRINCIPAL & MANAGING DIRECTOR  
mhoover@capstonecre.com

O: 717.820.1127 X702 C: 717.329.1211

### Michael Kushner, CCIM

SENIOR ADVISOR  
mkushner@capstonecre.com

O: 717.820.1127 X707 C: 717.991.6384



# ADVISOR BIO

1201 Hummel Ave | Lemoyne, PA 17043



## **Michael Kushner** **CCIM**

Senior Advisor

[mkushner@capstonecre.com](mailto:mkushner@capstonecre.com)

(O) 717.820.1127 x707

(C) 717.991.6384

Mike entered commercial real estate in 1986, and soon developed a passion for helping businesses find their perfect space. That passion led him to create his own firm, Omni Realty Group, in 1998, and he has been exclusively practicing buyer/tenant representation ever since. Since his start, Mike has been directly responsible for the successful repositioning and redevelopment of over 500 apartment units and 8 million square feet of retail, office, industrial, and residential product in Central Pennsylvania, as well as closing sale and lease transactions in excess of \$100 million. Mike is committed to knowing his clients and their businesses on a more personal level, developing deep trust and detailed understanding of their business operation, financial position, and their risk profile. Mike joined our team in March of 2024, ready to offer his unique specialty with the highest level of service, loyalty, and confidence for each client. Mike was raised in Central PA, and received his degree in Economics from the University of Pennsylvania.

Capstone Commercial is a values-driven commercial real estate firm with over 80 years of collective experience. We believe in a synergistic, client-centered approach that reinforces our team's ability to provide you with unparalleled value and expertise. Capstone offers comprehensive services to guide clients through all phases of the commercial real estate cycle, including investment analysis & sales, development land sales, specialty-use commercial property sales, business brokerage, and commercial or industrial sales and leasing. The expert advisors at Capstone Commercial include CCIM designees, Associate Brokers, Negotiation Experts, and GREEN Certified Realtors. With our unusually collaborative and supportive environment, the team is able to create a greater positive impact through the merging of their varied and unique skill sets. Capstone embodies the ideals of integrity, transparency, collaboration, and honesty. Our fresh take on the industry is setting a new standard where ethics are prioritized before profit. The well-being of our clients, associates, and communities is the center of our focus in everything we do.



### **Ida McMurray, CCIM, SIOR**

PRINCIPAL & SENIOR ADVISOR  
[imcmurray@capstonecre.com](mailto:imcmurray@capstonecre.com)

O: 717.820.1127 X701 C: 717.443.5500

### **Matt Hoover**

PRINCIPAL & MANAGING DIRECTOR  
[mhoover@capstonecre.com](mailto:mhoover@capstonecre.com)

O: 717.820.1127 X702 C: 717.329.1211

### **Michael Kushner, CCIM**

SENIOR ADVISOR

[mkushner@capstonecre.com](mailto:mkushner@capstonecre.com)

O: 717.820.1127 X707 C: 717.991.6384

# LEGAL

1201 Hummel Ave | Lemoyne, PA 17043

## CONFIDENTIALITY & DISCLAIMER

All materials and information received or derived from Capstone Commercial its directors, officers, agents, advisors, affiliates and/or any third party sources are provided without representation or warranty as to completeness, veracity, or accuracy, condition of the property, compliance or lack of compliance with applicable governmental requirements, developability or suitability, financial performance of the property, projected financial performance of the property for any party's intended use or any and all other matters. Neither Capstone Commercial its directors, officers, agents, advisors, or affiliates makes any representation or warranty, express or implied, as to accuracy or completeness of the any materials or information provided, derived, or received. Materials and information from any source, whether written or verbal, that may be furnished for review are not a substitute for a party's active conduct of its own due diligence to determine these and other matters of significance to such party. Capstone Commercial will not investigate or verify any such matters or conduct due diligence for a party unless otherwise agreed in writing.

EACH PARTY SHALL CONDUCT ITS OWN INDEPENDENT INVESTIGATION AND DUE DILIGENCE. Any party contemplating or under contract or in escrow for a transaction is urged to verify all information and to conduct their own inspections and investigations including through appropriate third party independent professionals selected by such party. All financial data should be verified by the party including by obtaining and reading applicable documents and reports and consulting appropriate independent professionals. Capstone Commercial makes no warranties and/or representations regarding the veracity, completeness, or relevance of any financial data or assumptions. Capstone Commercial does not serve as a financial advisor to any party regarding any proposed transaction. All data and assumptions regarding financial performance, including that used for financial modeling purposes, may differ from actual data or performance. Any estimates of market rents and/or projected rents that may be provided to a party do not necessarily mean that rents can be established at or increased to that level. Parties must evaluate any applicable contractual and governmental limitations as well as market conditions, vacancy factors and other issues in order to determine rents from or for the property. Legal questions should be discussed by the party with an attorney. Tax questions should be discussed by the party with a certified public accountant or tax attorney. Title questions should be discussed by the party with a title officer or attorney. Questions regarding the condition of the property and whether the property complies with applicable governmental requirements should be discussed by the party with appropriate engineers, architects, contractors, other consultants and governmental agencies. All properties and services are marketed by Capstone Commercial in compliance with all applicable fair housing and equal opportunity laws.



**Ida McMurray, CCIM, SIOR**

PRINCIPAL & SENIOR ADVISOR  
imcmurray@capstonecre.com

O: 717.820.1127 X701 C: 717.443.5500

**Matt Hoover**

PRINCIPAL & MANAGING DIRECTOR  
mhoover@capstonecre.com

O: 717.820.1127 X702 C: 717.329.1211

**Michael Kushner, CCIM**

SENIOR ADVISOR  
mkushner@capstonecre.com

O: 717.820.1127 X707 C: 717.991.6384