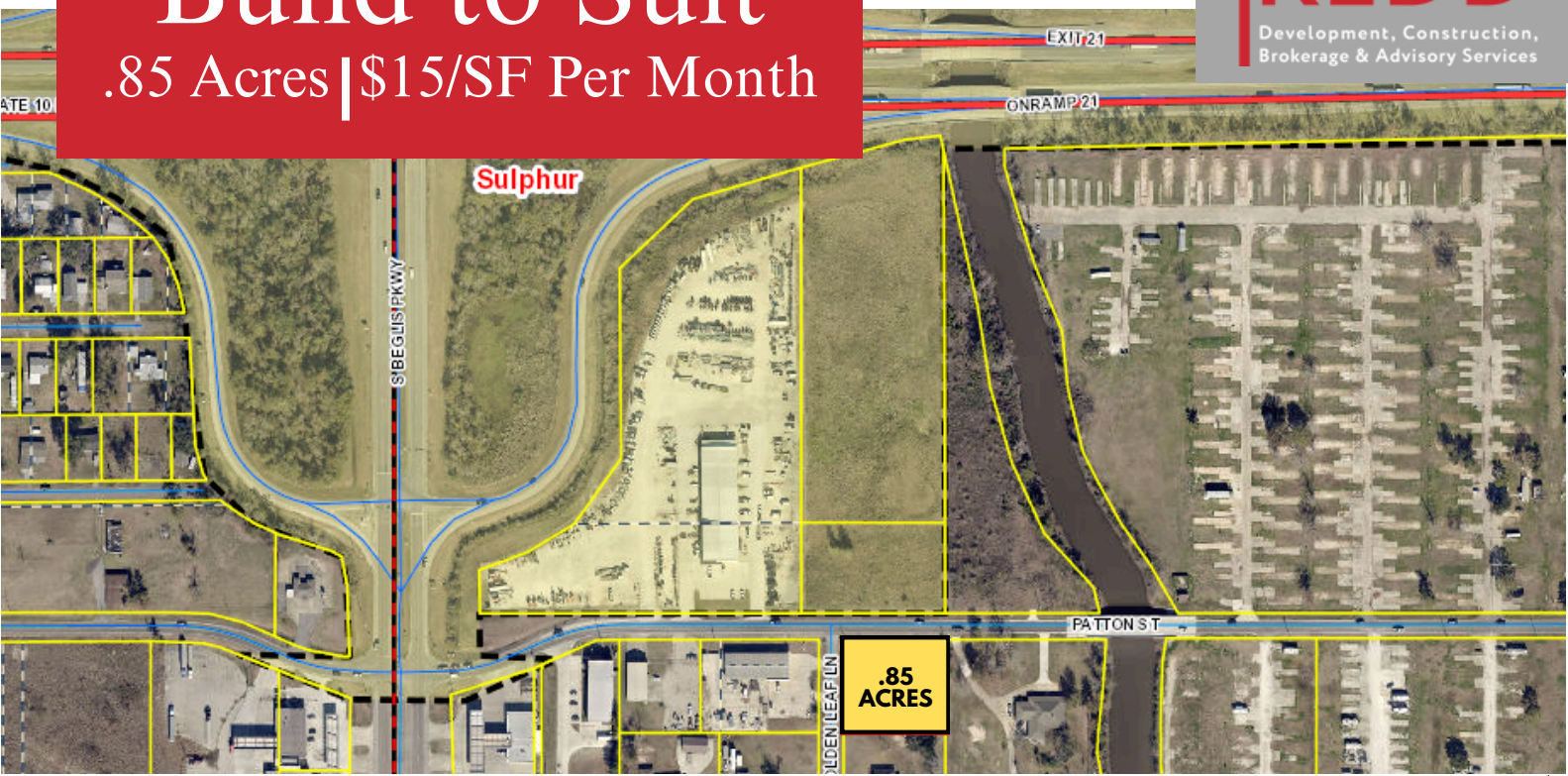


Build to Suit

.85 Acres | \$15/SF Per Month

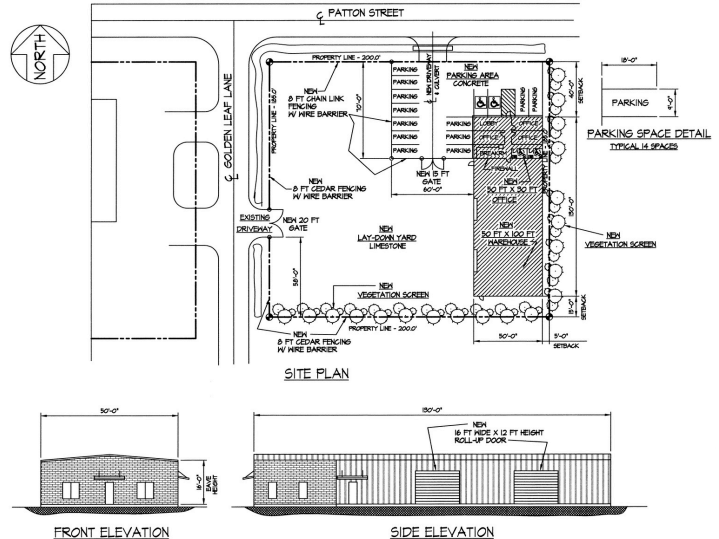


TBD Patton Street

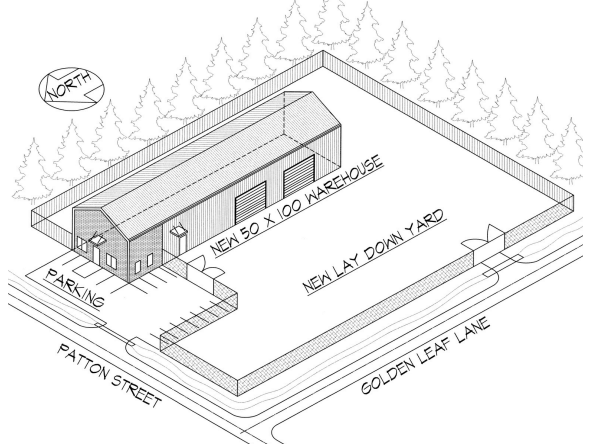
Sulphur, Louisiana 70665

Property Highlights

- Build to Suit at \$15/SF
- 37,000sf total site area
- .85 acres
- Light Industrial Zoning
- Office/Warehouse + Laydown Yard
- Calcasieu Parish Building Jurisdiction



Site plan is for example only and can be modified to fit clients needs.



CALL OR EMAIL FOR MORE INFORMATION

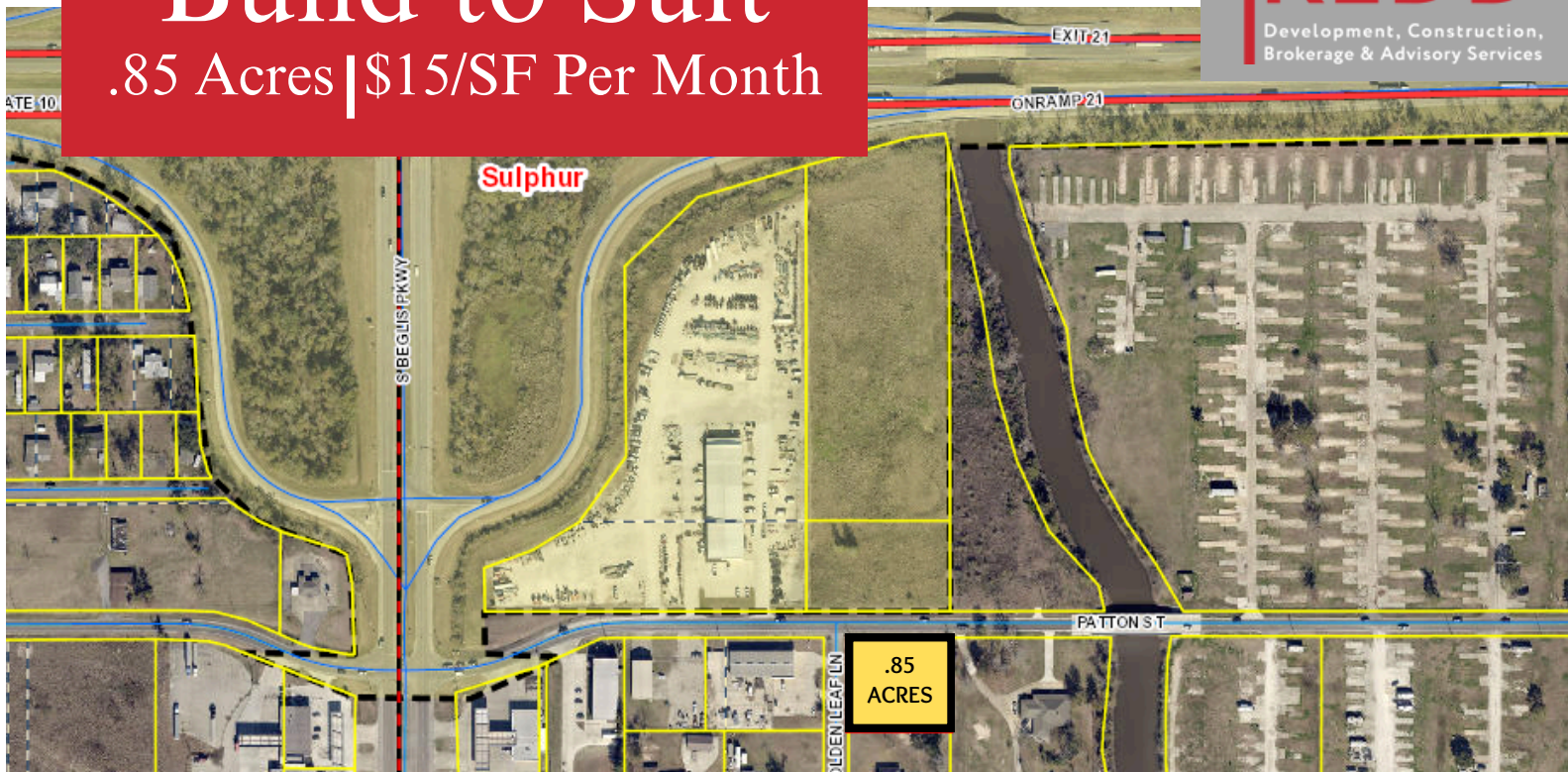
For more information
Matt Redd, ccm, SIOR, CRE
 O: 337 310 0605 C: 337 489 9666
 mattredd@reddproperties.com

NO WARRANTY OR REPRESENTATION, EXPRESS OR IMPLIED, IS MADE AS TO THE ACCURACY OF THE INFORMATION CONTAINED HEREIN, AND THE SAME IS SUBMITTED SUBJECT TO ERRORS, OMISSIONS, CHANGE OF PRICE, RENTAL OR OTHER CONDITIONS, PRIOR SALE, LEASE OR FINANCING, OR WITHDRAWAL WITHOUT NOTICE, AND OF ANY SPECIAL LISTING CONDITIONS IMPOSED BY OUR PRINCIPALS NO WARRANTIES OR REPRESENTATIONS ARE MADE AS TO THE CONDITION OF THE PROPERTY OR ANY HAZARDS CONTAINED THEREIN ARE ANY TO BE IMPLIED. LICENSED IN LOUISIANA.

1424 Ryan Street
 Lake Charles, LA 70601
 337 310 0605
 reddproperties.com

Build to Suit

.85 Acres | \$15/SF Per Month



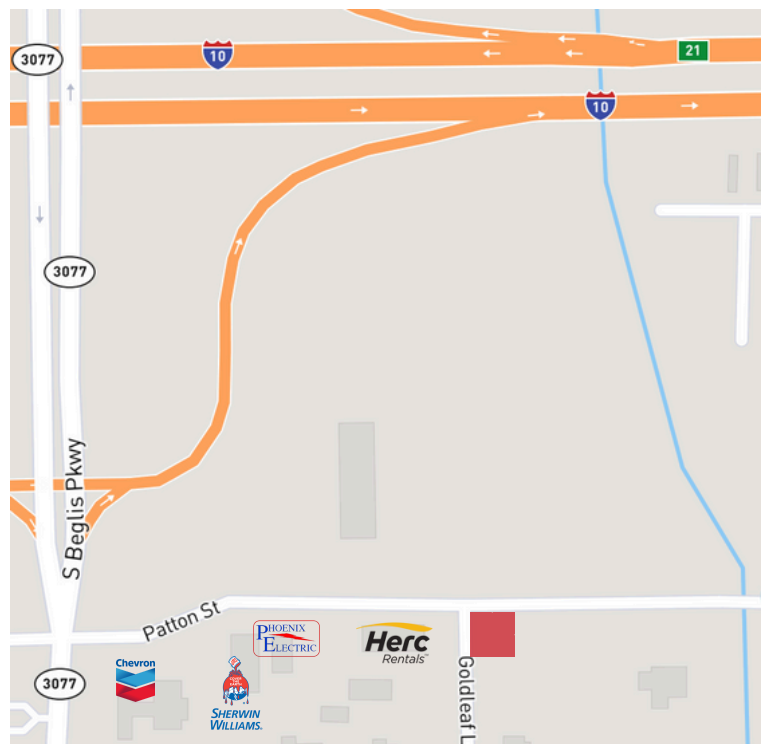
TBD Patton Street

Sulphur, Louisiana 70665

Property Highlights

- Build to Suit
- 37,000sf total site area
- .85 acres
- Light Industrial Zoning
- Office/Warehouse + Laydown Yard
- Calcasieu Parish Building Jurisdiction

We are able to provide accommodations that match the listed option or something comparable to meet the requirements of the tenant.



CALL OR EMAIL FOR MORE INFORMATION

For more information

Matt Redd, CCM, SIOR, CRE

O: 337 310 0605 C: 337 489 9666

mattredd@reddproperties.com

1424 Ryan Street
Lake Charles, LA 70601
337 310 0605

reddproperties.com

NO WARRANTY OR REPRESENTATION, EXPRESS OR IMPLIED, IS MADE AS TO THE ACCURACY OF THE INFORMATION CONTAINED HEREIN, AND THE SAME IS SUBMITTED SUBJECT TO ERRORS, OMISSIONS, CHANGE OF PRICE, RENTAL OR OTHER CONDITIONS, PRIOR SALE, LEASE OR FINANCING, OR WITHDRAWAL WITHOUT NOTICE, AND OF ANY SPECIAL LISTING CONDITIONS IMPOSED BY OUR PRINCIPALS NO WARRANTIES OR REPRESENTATIONS ARE MADE AS TO THE CONDITION OF THE PROPERTY OR ANY HAZARDS CONTAINED THEREIN ARE ANY TO BE IMPLIED. LICENSED IN LOUISIANA.

