

**999 REPUBLIC DRIVE
ALLEN PARK, MICHIGAN**

HI-TECH FOR SALE OR LEASE

For Sale: 58,730 Square Feet

For Lease: 23,799 Square Feet



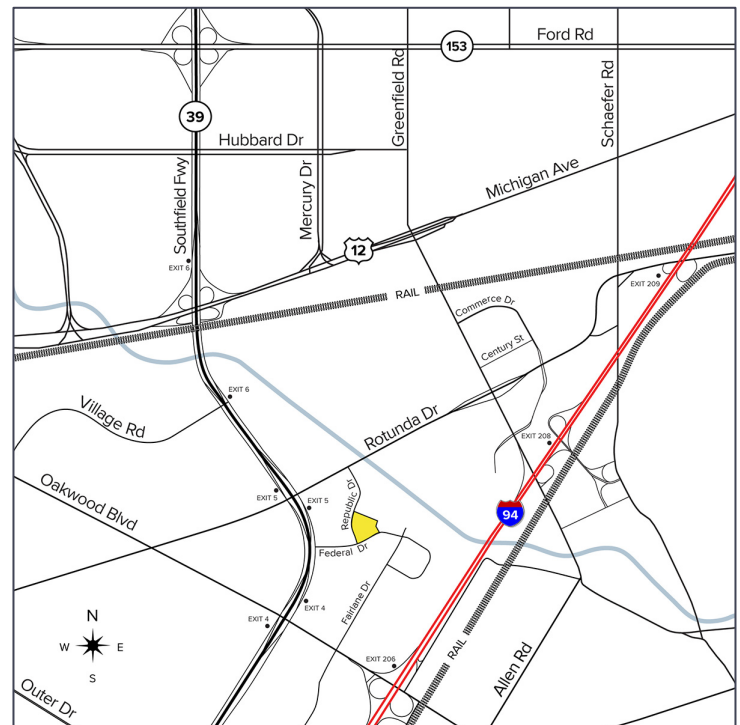
**SIGNATURE
ASSOCIATES**
KNOW SIGNATURE | KNOW RESULTS

FAIRLANE BUSINESS PARK



PROPERTY FEATURES

- 23,799 office square feet available in high image building and park; shop space to suit
- 58,730 total building square feet
- 17'6" clear height
- (4) 14'x12' and (1) 10'x10' grade level doors
- Zoned R&D
- 100% air-conditioned
- Excellent parking ratio of 3.69/1,000 sq. ft.
- High-bay and office spaces
- Sale possible
- Lease Rate: \$9.00 sq.ft. NNN



For more information, please contact:

CHRIS SECONTINE

(248) 799 3174

csecontine@signatureassociates.com

BRAD VIERGEVER

(248) 799 3146

bviergever@signatureassociates.com

SIGNATURE ASSOCIATES

One Towne Square, Suite 1200

Southfield, MI 48076

www.signatureassociates.com

999 Republic Drive – Allen Park, Michigan

Hi-Tech For Sale or Lease

For Lease –
23,799 SF
For Sale –
58,730 SF



For more information, please contact:

CHRIS SECONTINE

(248) 799 3174

csecontine@signatureassociates.com

BRAD VIERGEVER

(248) 799 3146

bviergever@signatureassociates.com

SIGNATURE ASSOCIATES

One Towne Square, Suite 1200

Southfield, MI 48076

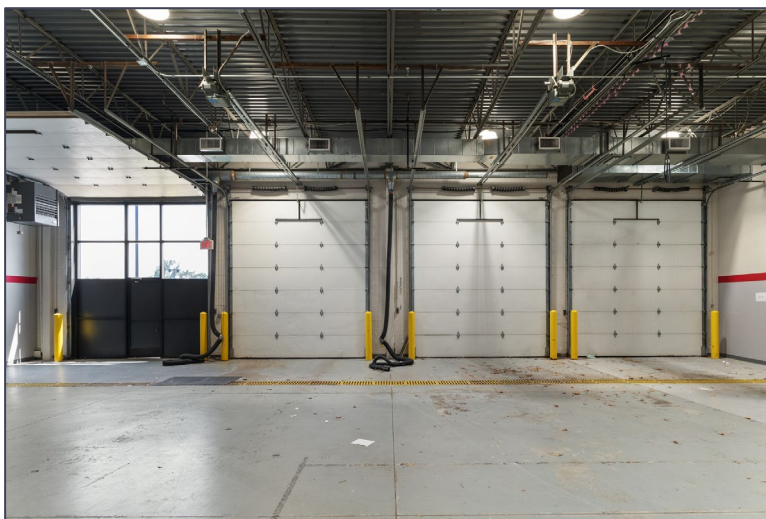
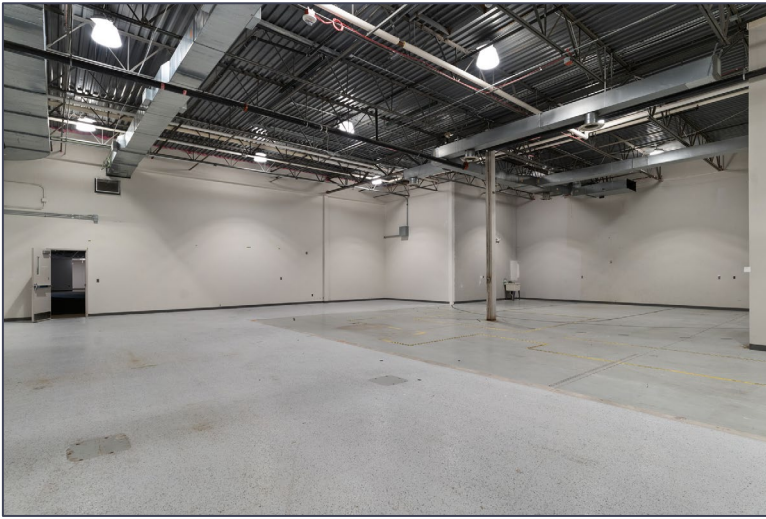
www.signatureassociates.com

Information is subject to verification and no liability for errors or omissions is assumed. Price is subject to change and listing withdrawal.

999 Republic Drive – Allen Park, Michigan

Hi-Tech For Sale or Lease

For Lease –
23,799 SF
For Sale –
58,730 SF



For more information, please contact:

CHRIS SECONTINE

(248) 799 3174

csecontine@signatureassociates.com

BRAD VIERGEVER

(248) 799 3146

bviergever@signatureassociates.com

SIGNATURE ASSOCIATES

One Towne Square, Suite 1200

Southfield, MI 48076

www.signatureassociates.com

Information is subject to verification and no liability for errors or omissions is assumed. Price is subject to change and listing withdrawal.

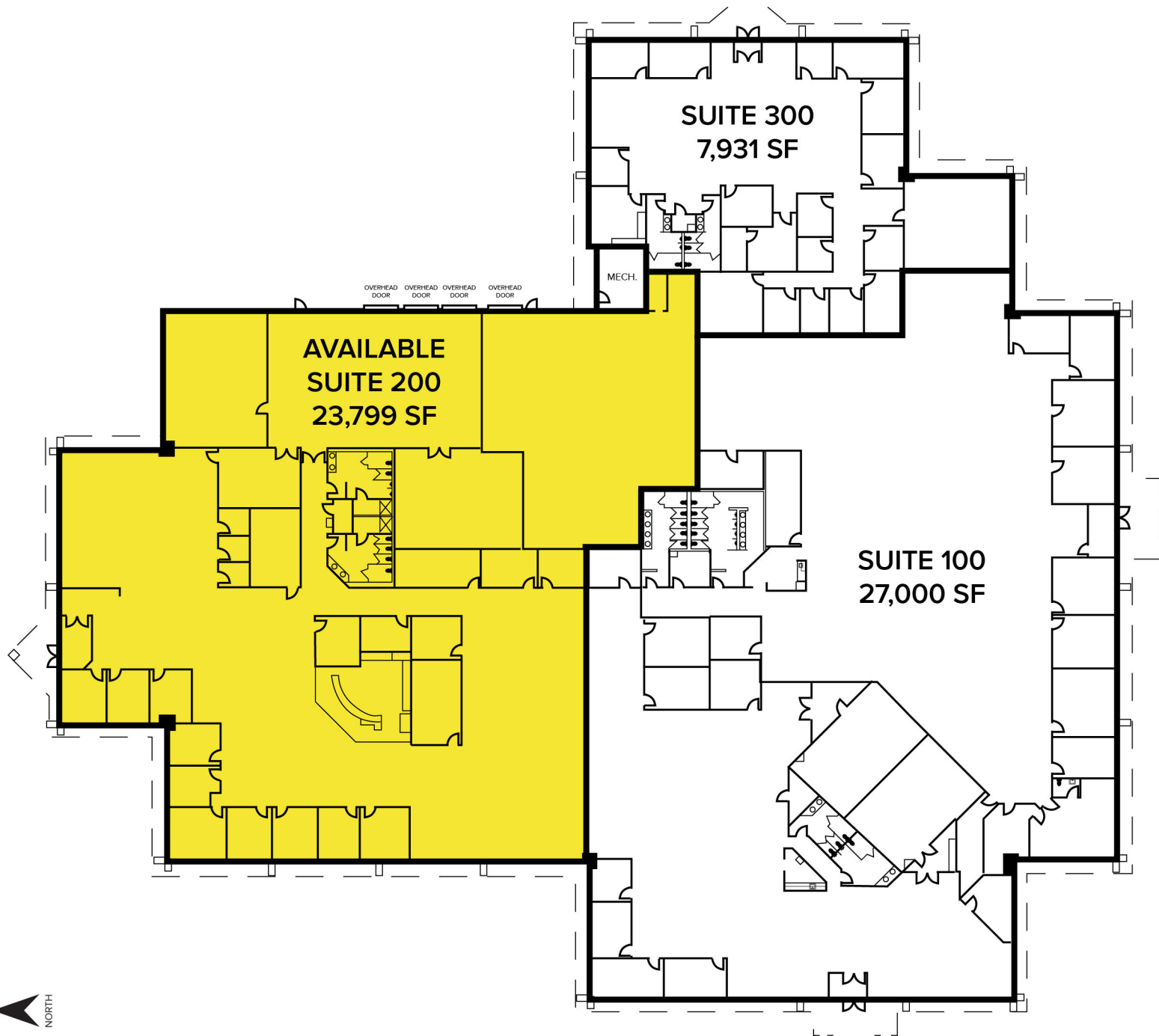
999 Republic Drive – Allen Park, Michigan

Hi-Tech For Sale or Lease

For Lease –
23,799 SF

For Sale –
58,730 SF

Floor Plan



For more information, please contact:

CHRIS SECONTINE

(248) 799 3174

csecontine@signatureassociates.com

BRAD VIERGEVER

(248) 799 3146

bviergever@signatureassociates.com

SIGNATURE ASSOCIATES

One Towne Square, Suite 1200

Southfield, MI 48076

www.signatureassociates.com

999 Republic Drive – Allen Park, Michigan

Hi-Tech For Sale or Lease

For Lease –
23,799 SF
For Sale –
58,730 SF

Aerial



For more information, please contact:

CHRIS SECONTINE

(248) 799 3174

csecontine@signatureassociates.com

BRAD VIERGEVER

(248) 799 3146

bviergever@signatureassociates.com

SIGNATURE ASSOCIATES

One Towne Square, Suite 1200

Southfield, MI 48076

www.signatureassociates.com

Information is subject to verification and no liability for errors or omissions is assumed. Price is subject to change and listing withdrawal.