



For Lease

Technology Service Center I
9405 W Colonial Drive

Technology Service Center II
9407 W Colonial Drive
Ocoee, FL

Technology Service Center at West Oaks Mall

- The Technology Service Center features 350,000 s.f. in two re-purposed buildings providing up to 105,000 s.f. floor plates
- 225,000 s.f. available
- High parking ratio
- 18 foot ceiling heights
- These large expansive spaces are perfect for call center and technology support users



David Chapin Commercial

450 South Orange Avenue Suite 300, Orlando, FL 32801
Direct 407-616-3195 | DavidChapin@DavidChapinCommercial.com
www.DavidChapinCommercial.com



David Chapin Commercial

Renovations



WEST OAKS MALL BELK REMODEL

9401 W Colonial Dr- Ocoee, FL - C&P # 2160446- 05-13-2016



David Chapin Commercial

Renovations



Interior Rendering



WEST OAKS MALL BELK REMODEL

9401 W Colonial Dr - Ocoee, FL - C&P # 2160446-08-09-2016



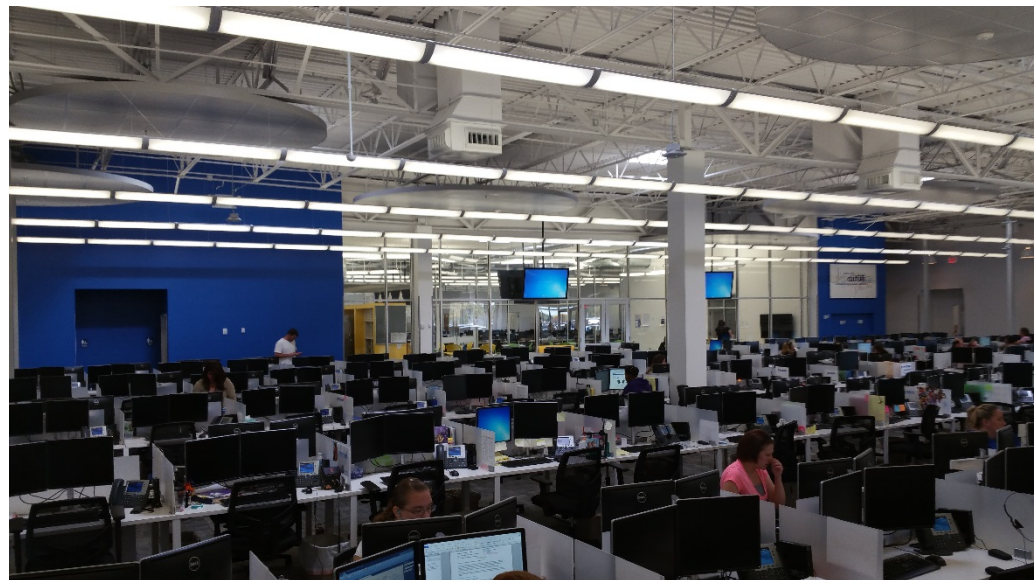
David Chapin Commercial

Interior photos

Front floor
(example)



Front floor
(example)



Property fact sheet

Technology Service Center I at West Oaks Mall



Technology Service Center I
9405 W Colonial Drive, Ocoee

Year built	1996
Building size	142,141 s.f.
Typical floor size	71,000 s.f.
Stories	2
Total available	71,000 s.f.
Amenities	Dedicated turn lane, signalized intersection, food court

Comments: Redeveloped as office

Technology Service Center II at West Oaks Mall



Technology Service Center II
9407 W Colonial Drive, Ocoee

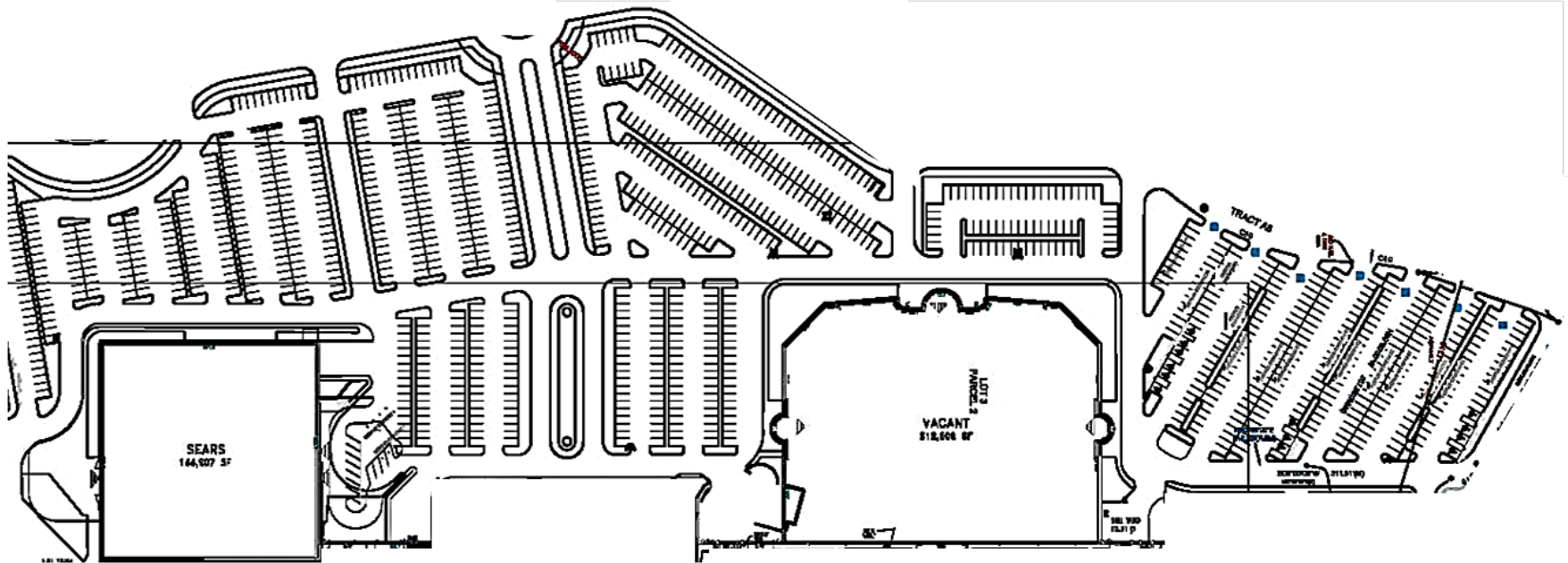
Year built	1996
Building size	212,506 s.f.
Typical floor size	106,253 s.f.
Stories	2
Total available	150,000 s.f.
Amenities	Dedicated turn lane, signalized intersection, food court, signage

Comments: Redeveloped as office

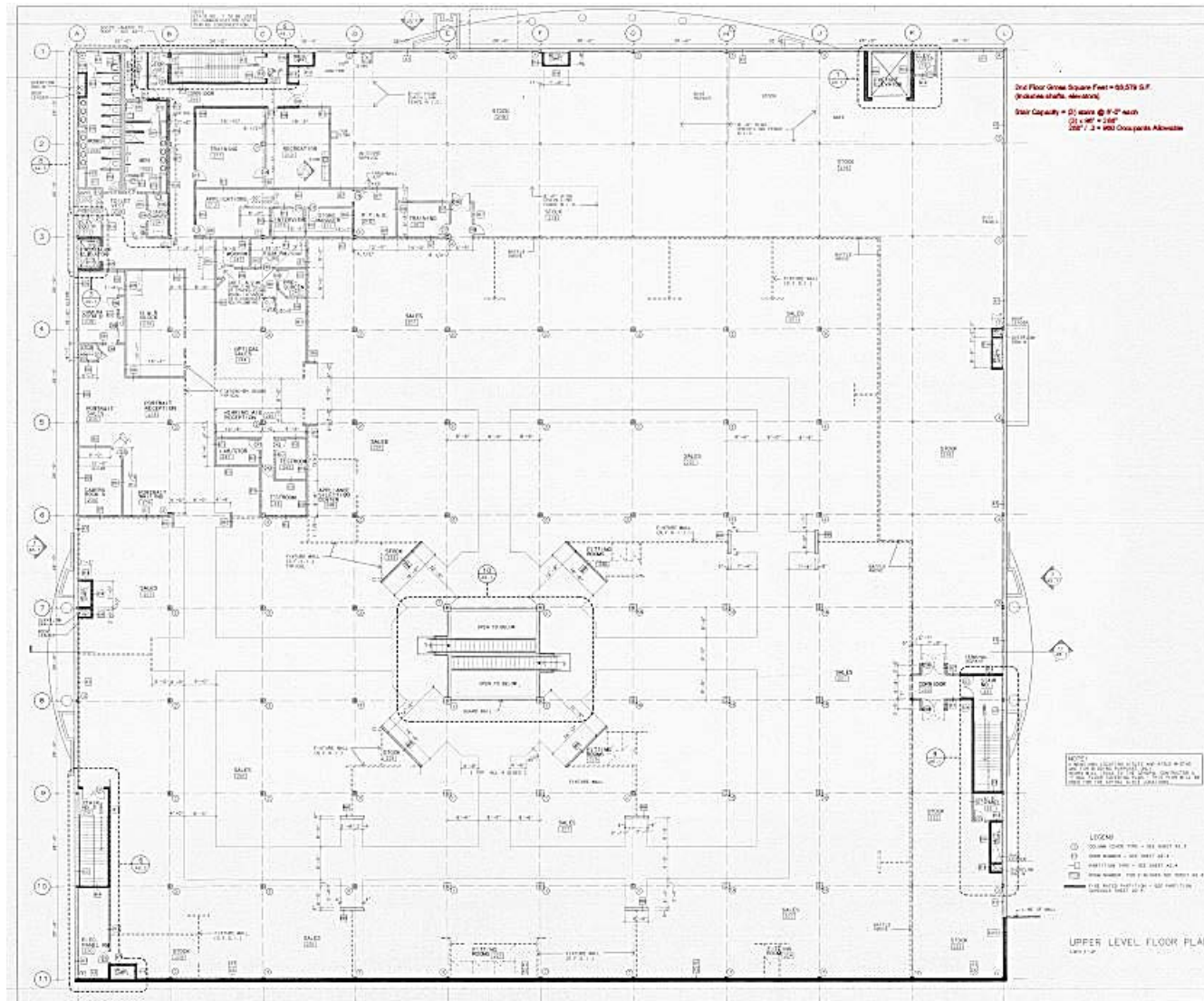


David Chapin Commercial

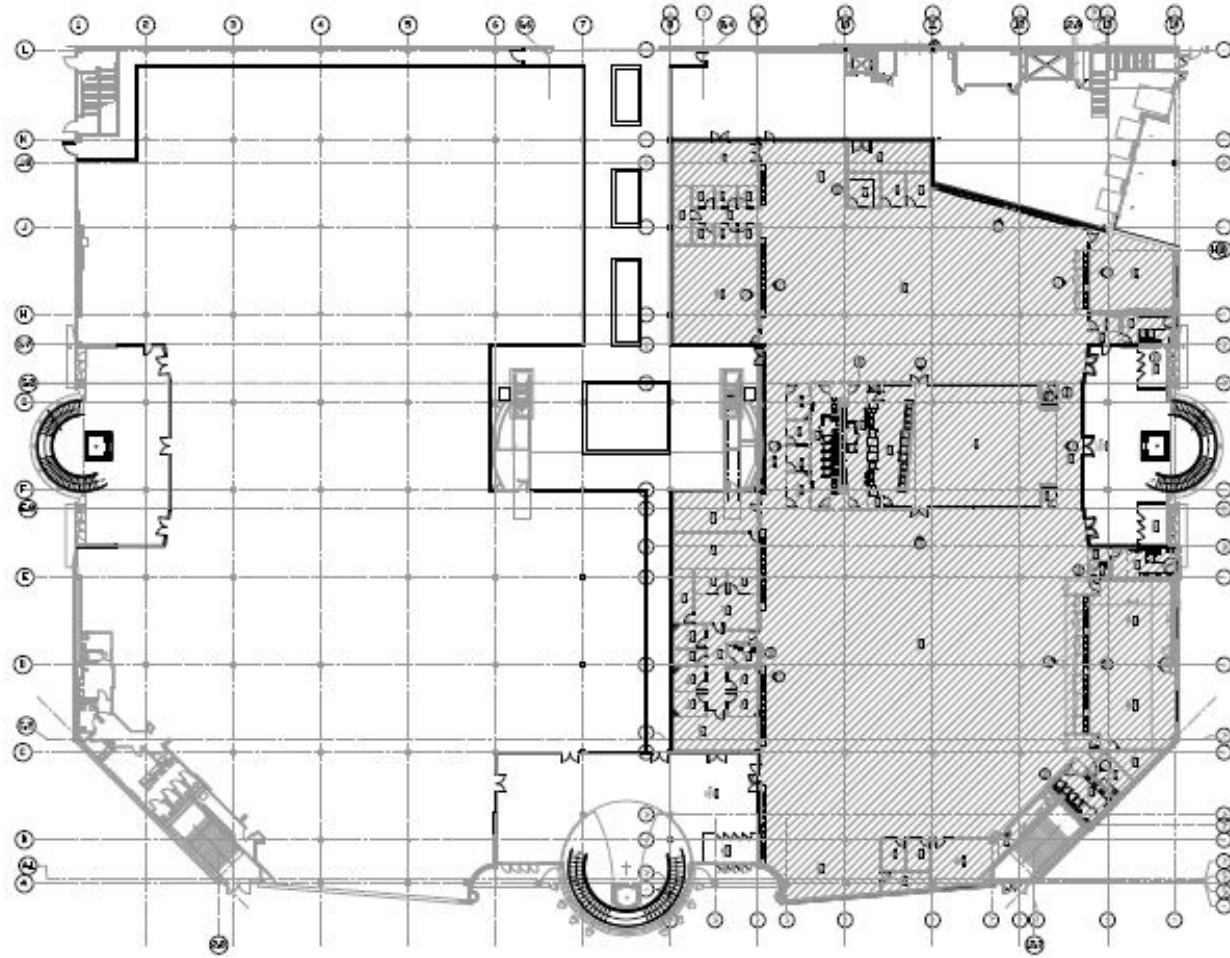
Preliminary site plan



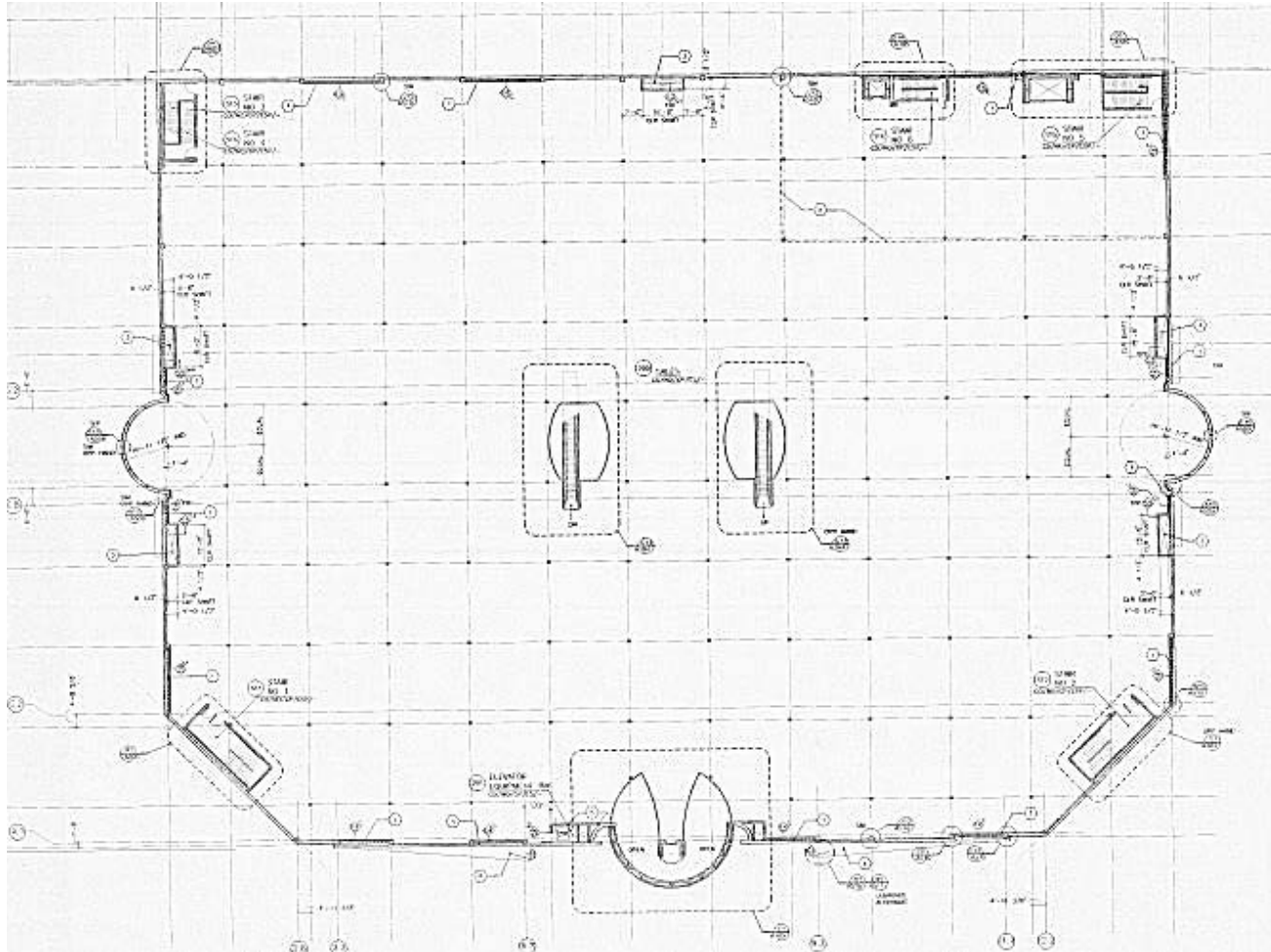
Technology Service Center I – 2nd floor



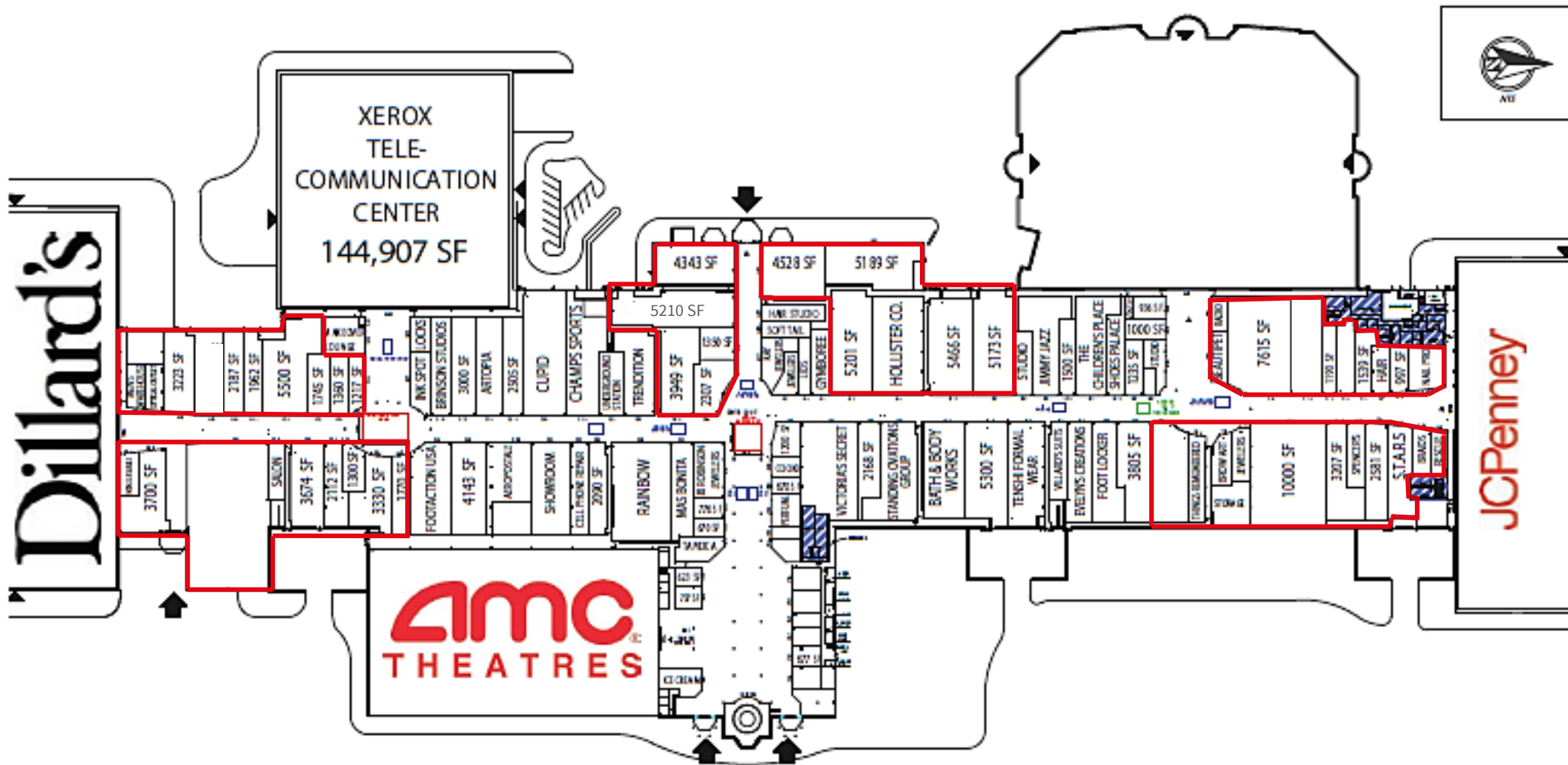
Technology Service Center II – 1st floor



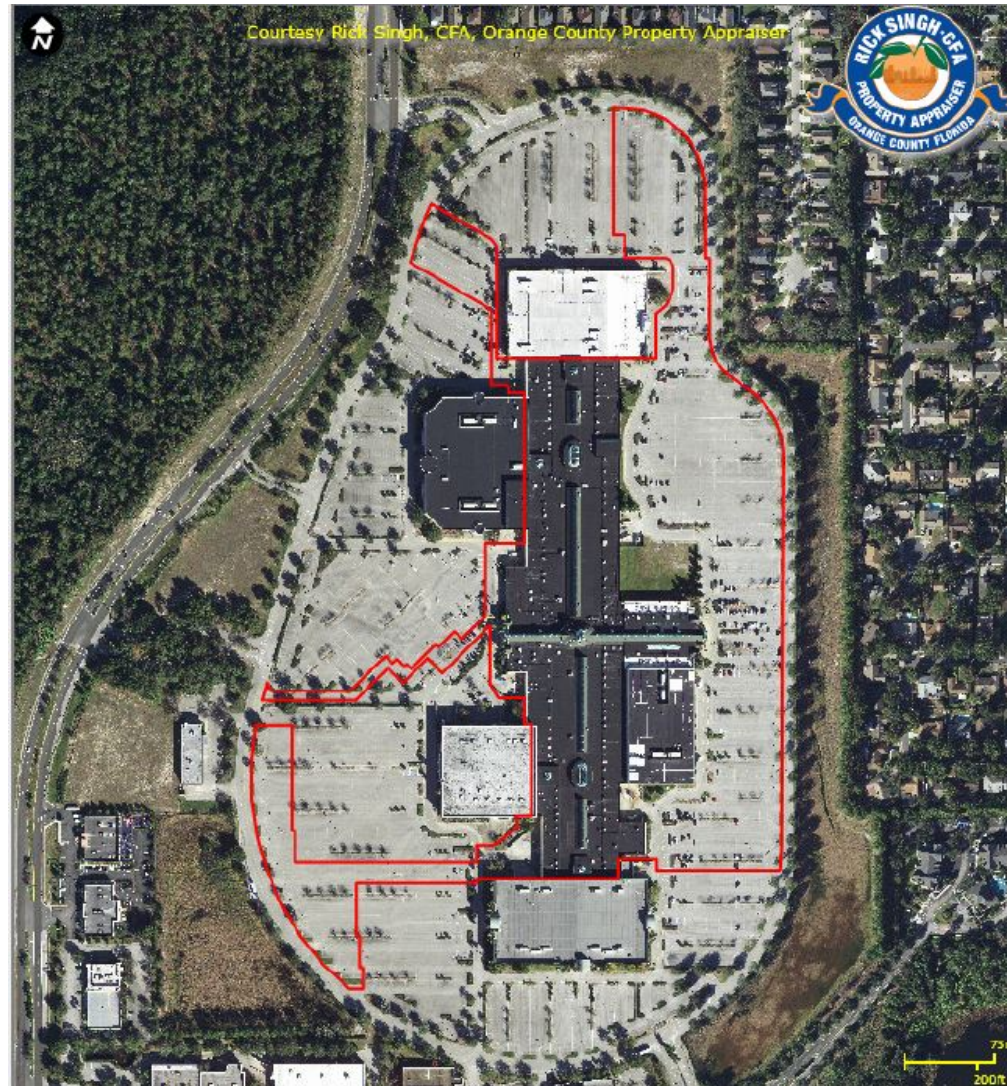
Technology Service Center II – 2nd floor



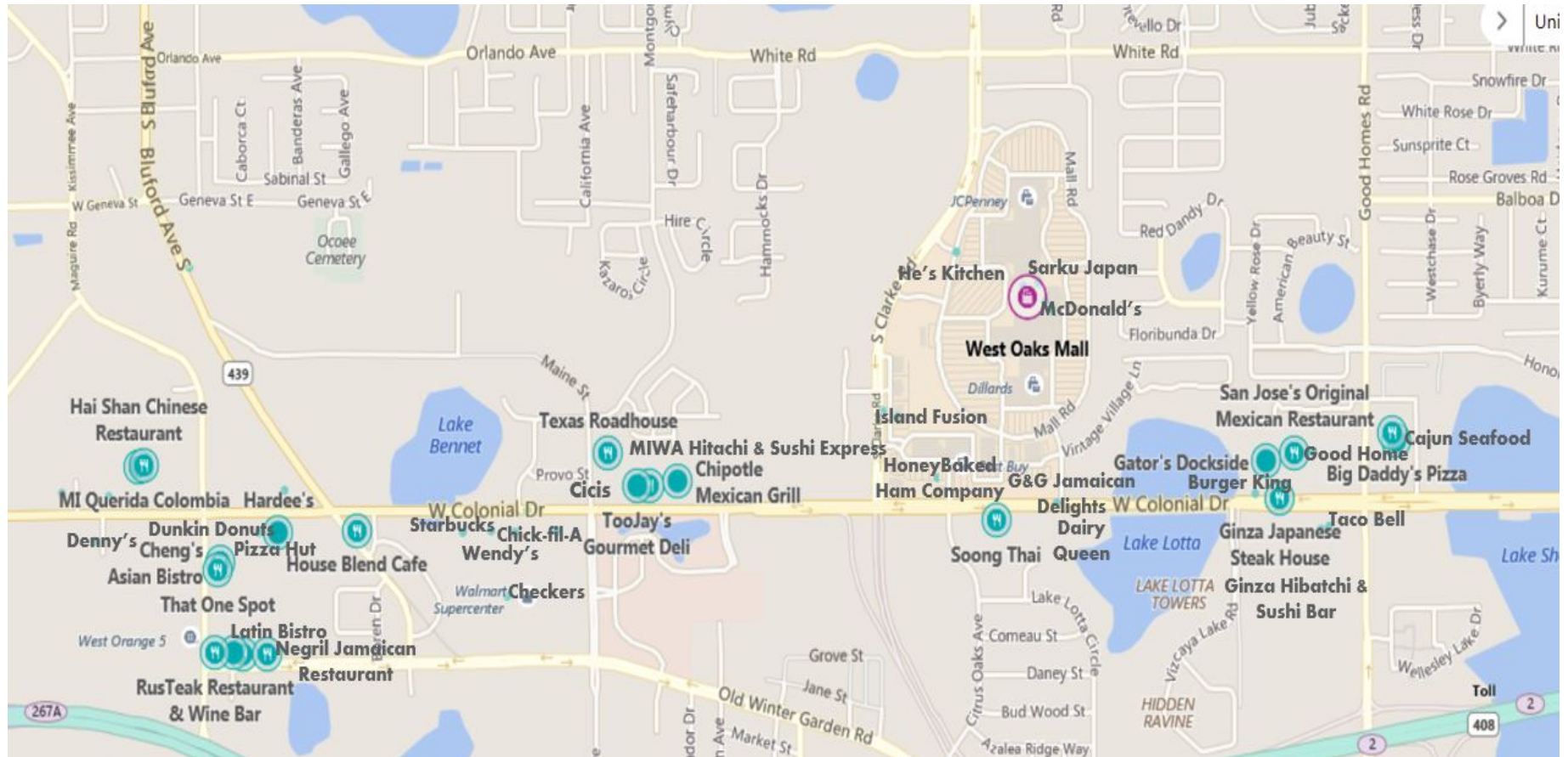
Dillard's



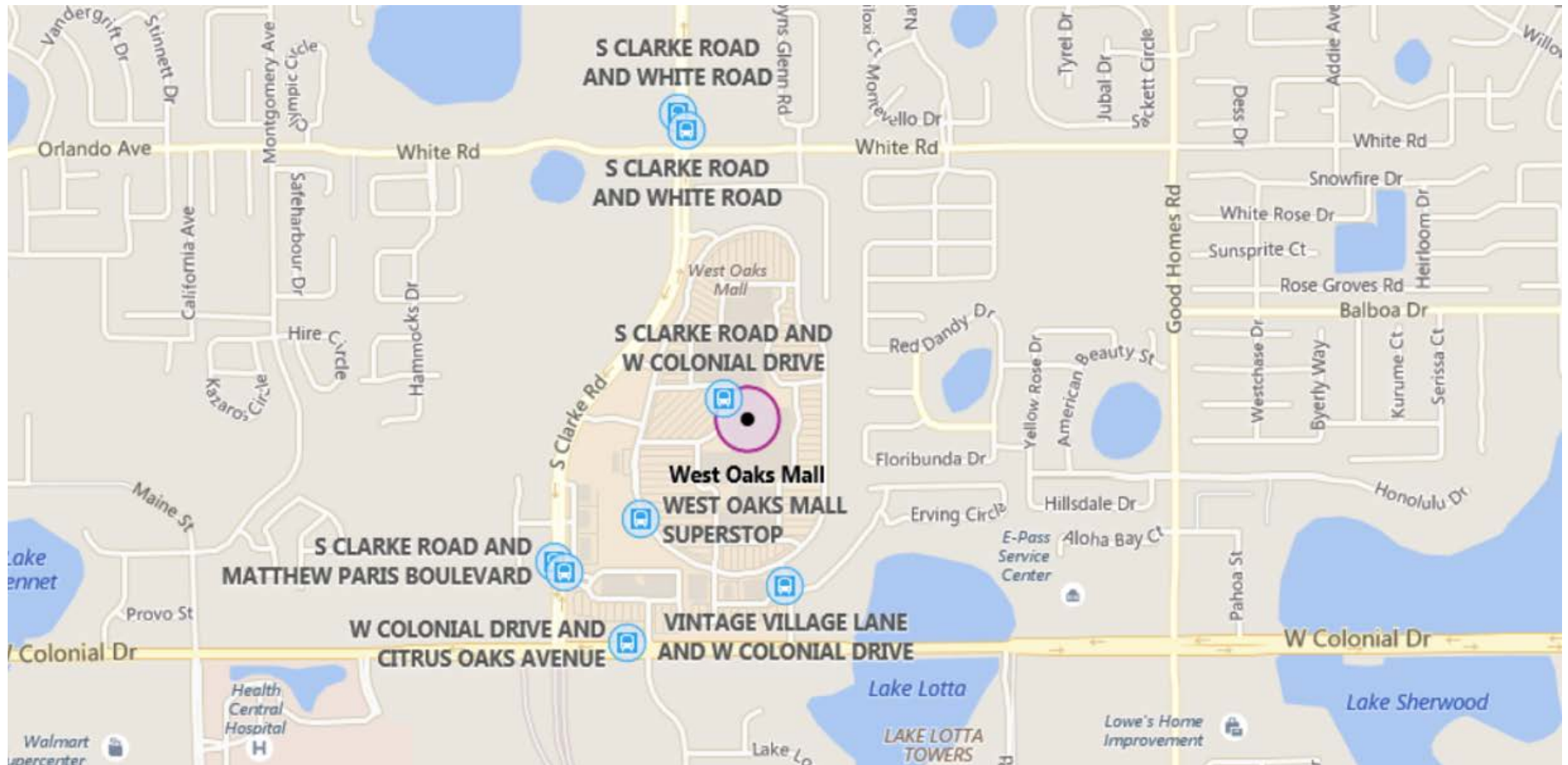
Parcel map



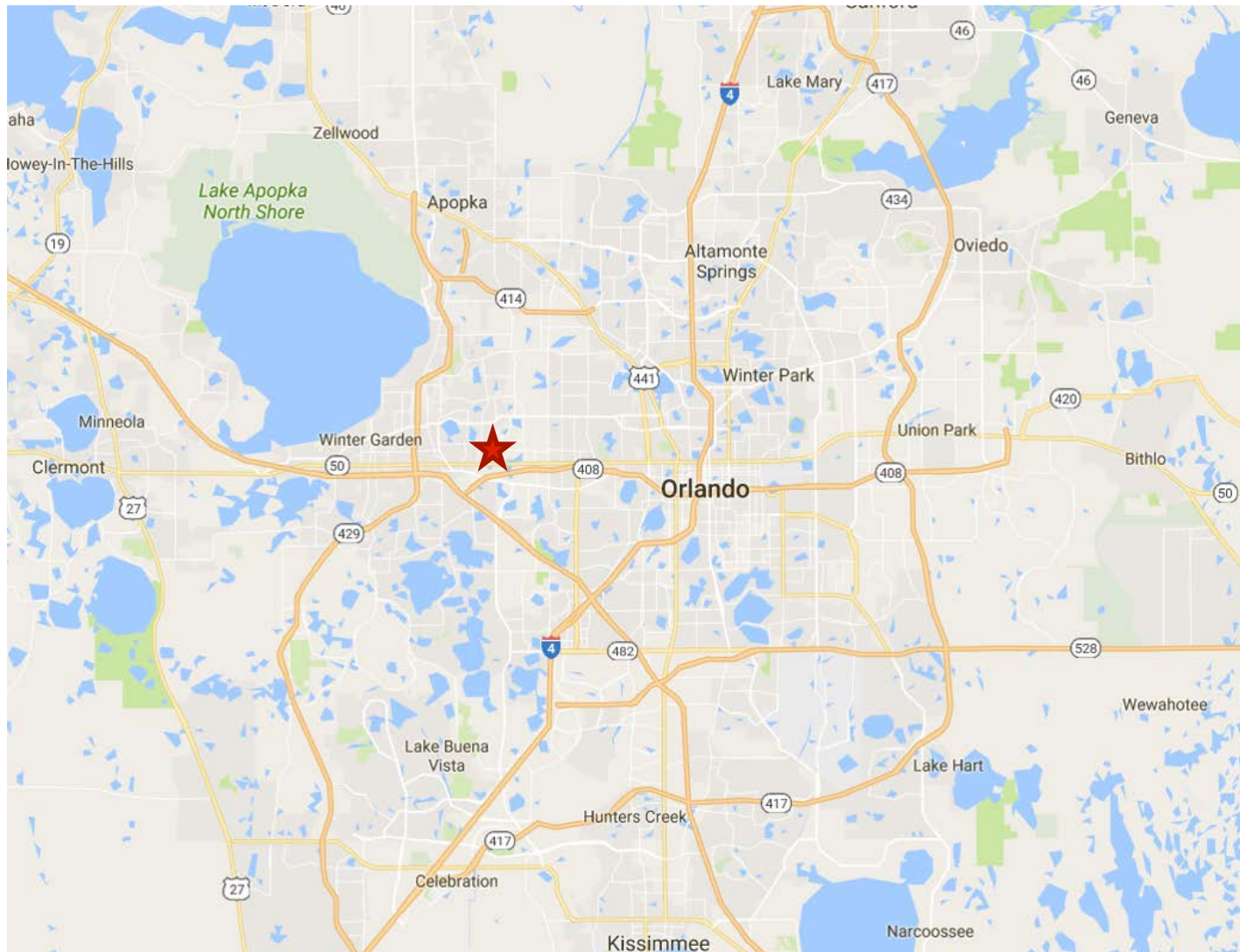
Amenities / restaurants



Public transportation



Location map



25 minute drive time map

