

AVAILABLE
FOR LEASE

15,912 SF FLEX SPACE

17295

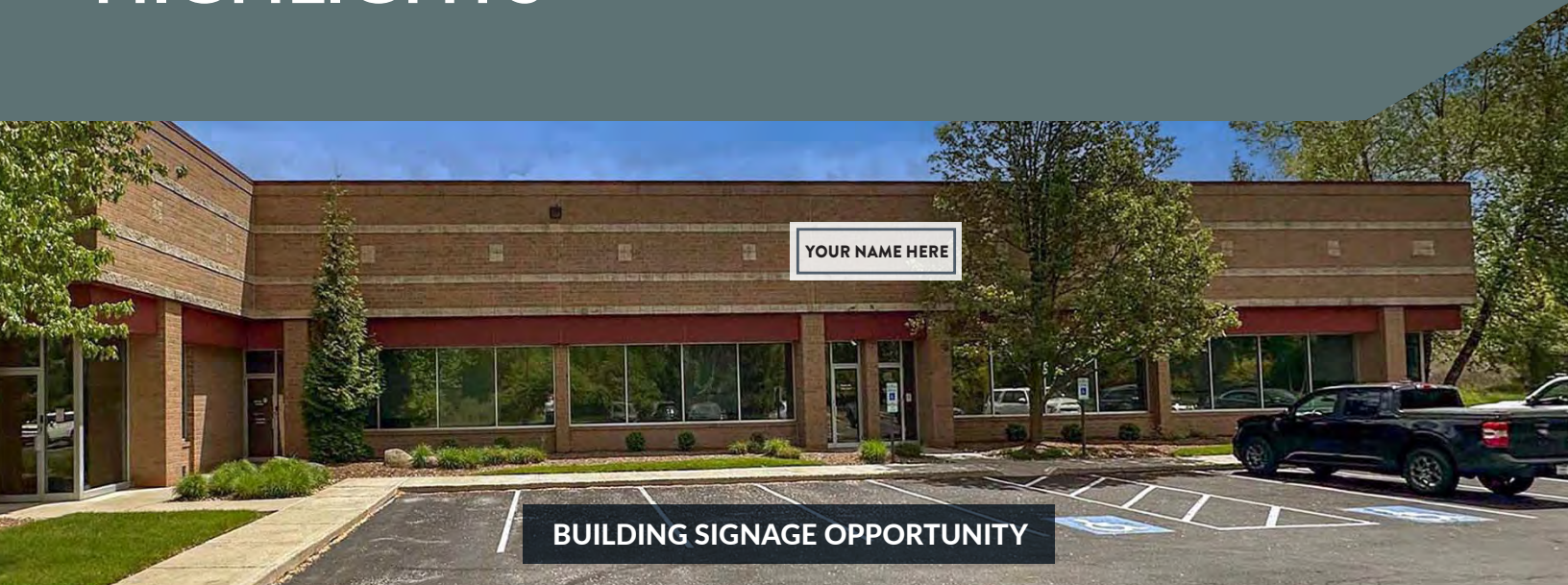
Foltz Industrial Parkway | Strongsville, OH



NEWMARK

Terry **COYNE**.com

PROPERTY HIGHLIGHTS



Space Uses

Light Manufacturing & Distribution,
Open Office Space, Dance/Yoga



Drive-in Doors

2 Drive-in Doors (12'x12')
(Coming 2026)



HVAC

Heat and Air Conditioning



Security System

State-of-the-Art Security System



Excellent Location

In the Heart of Strongsville



Clearance Height

- 14.1' (Office)
- 21' (Warehouse)



Sprinkler System

100% Wet Sprinklered



Parking

Ample Paved Surface Parking
(4.40/1,000 SF)



Internet

High Speed



Freeway Access

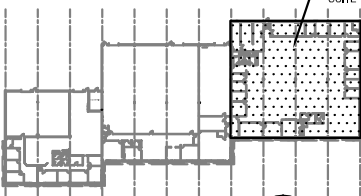
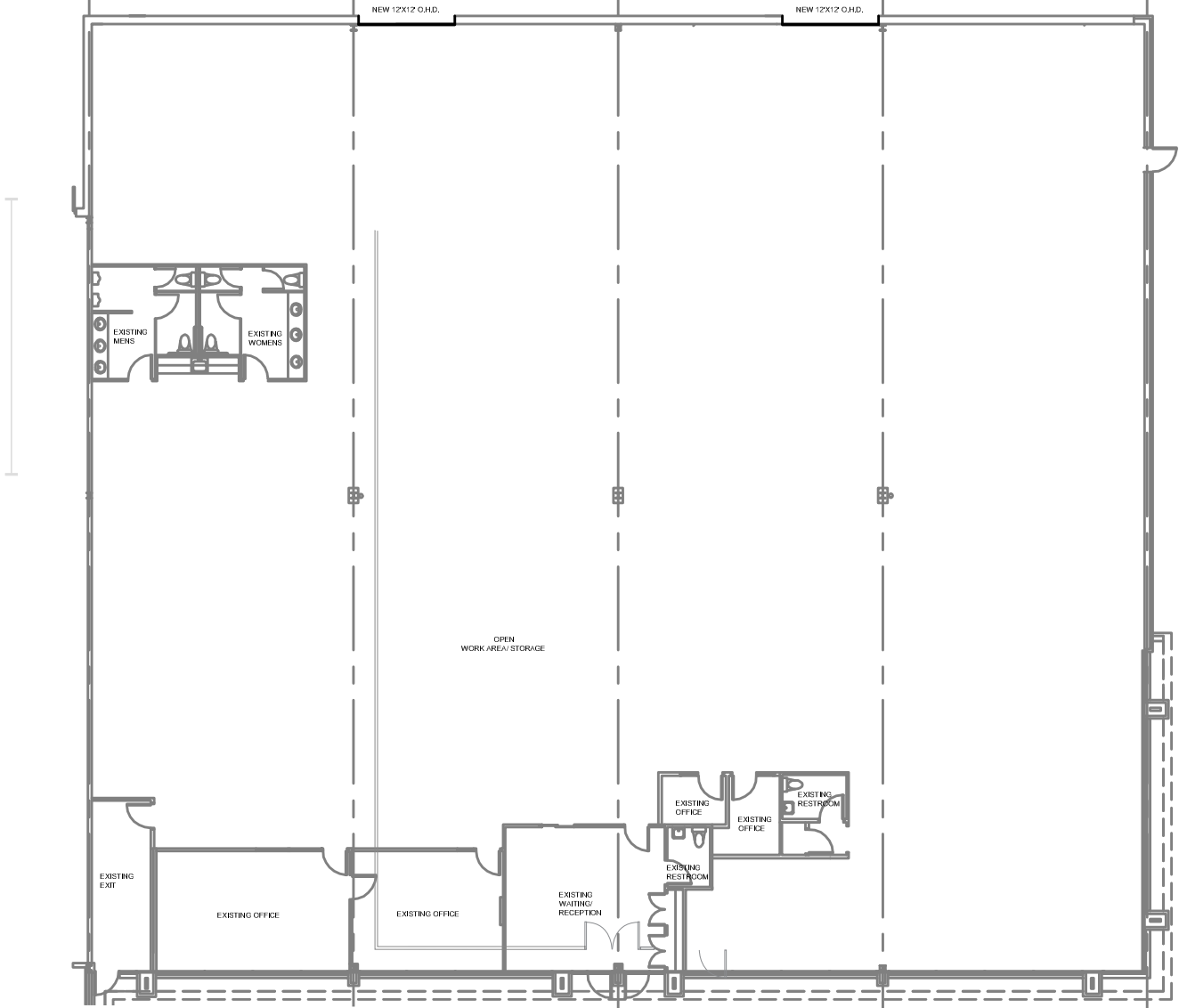
Close Proximity to I-71
& I-80 (Ohio Turnpike)

17295

Foltz Industrial Parkway | Strongsville, OH

TURN-KEY SPACE PLAN

15,912 SF



Floor Plan

17295

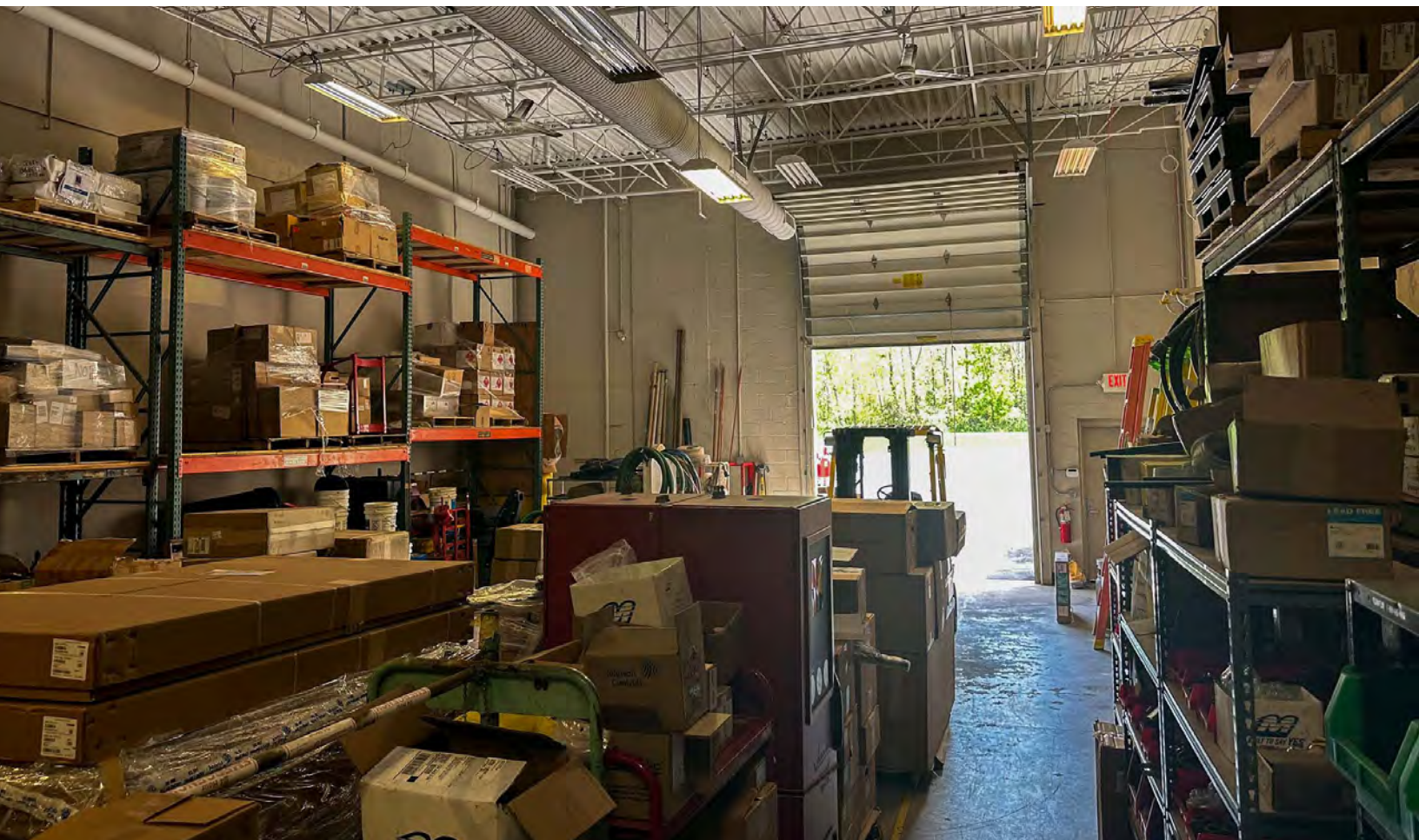
Foltz Industrial Parkway | Strongsville, OH



Offices

17295

Foltz Industrial Parkway | Strongsville, OH

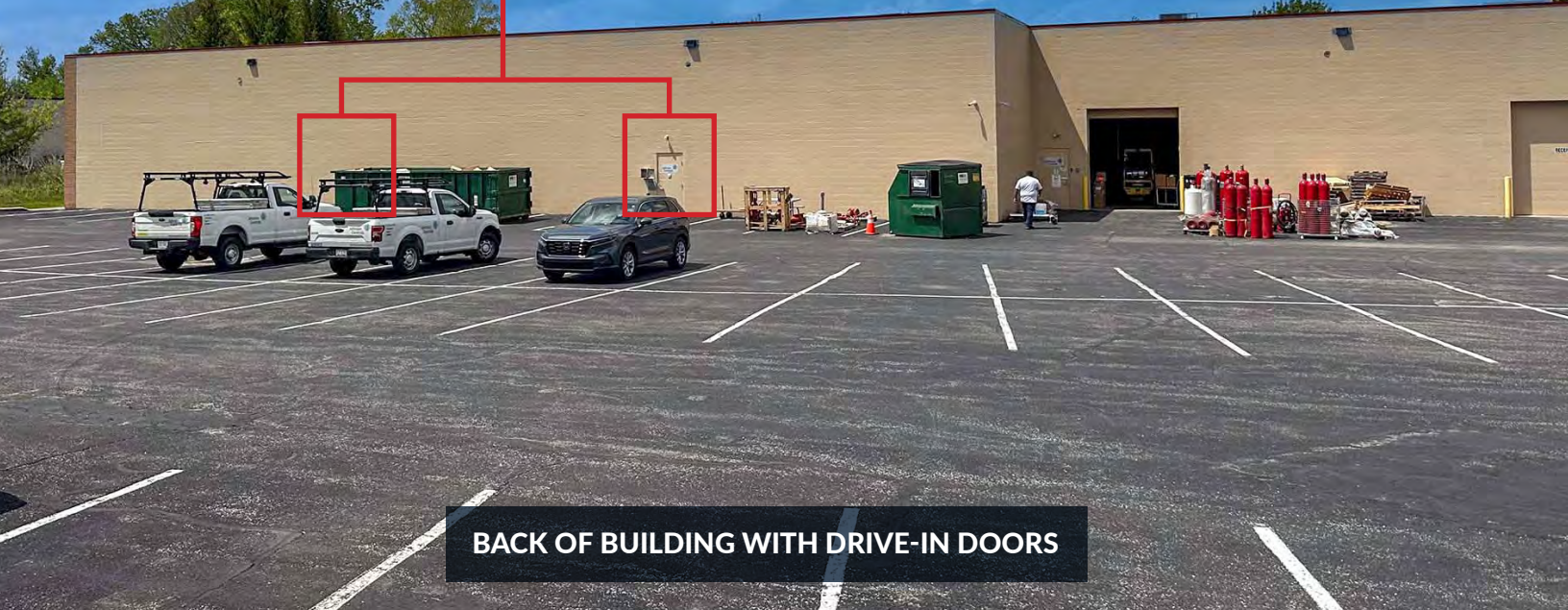


Warehouse Photos

17295

Foltz Industrial Parkway | Strongsville, OH

2 DRIVE-IN DOORS (COMING 2026)



BACK OF BUILDING WITH DRIVE-IN DOORS



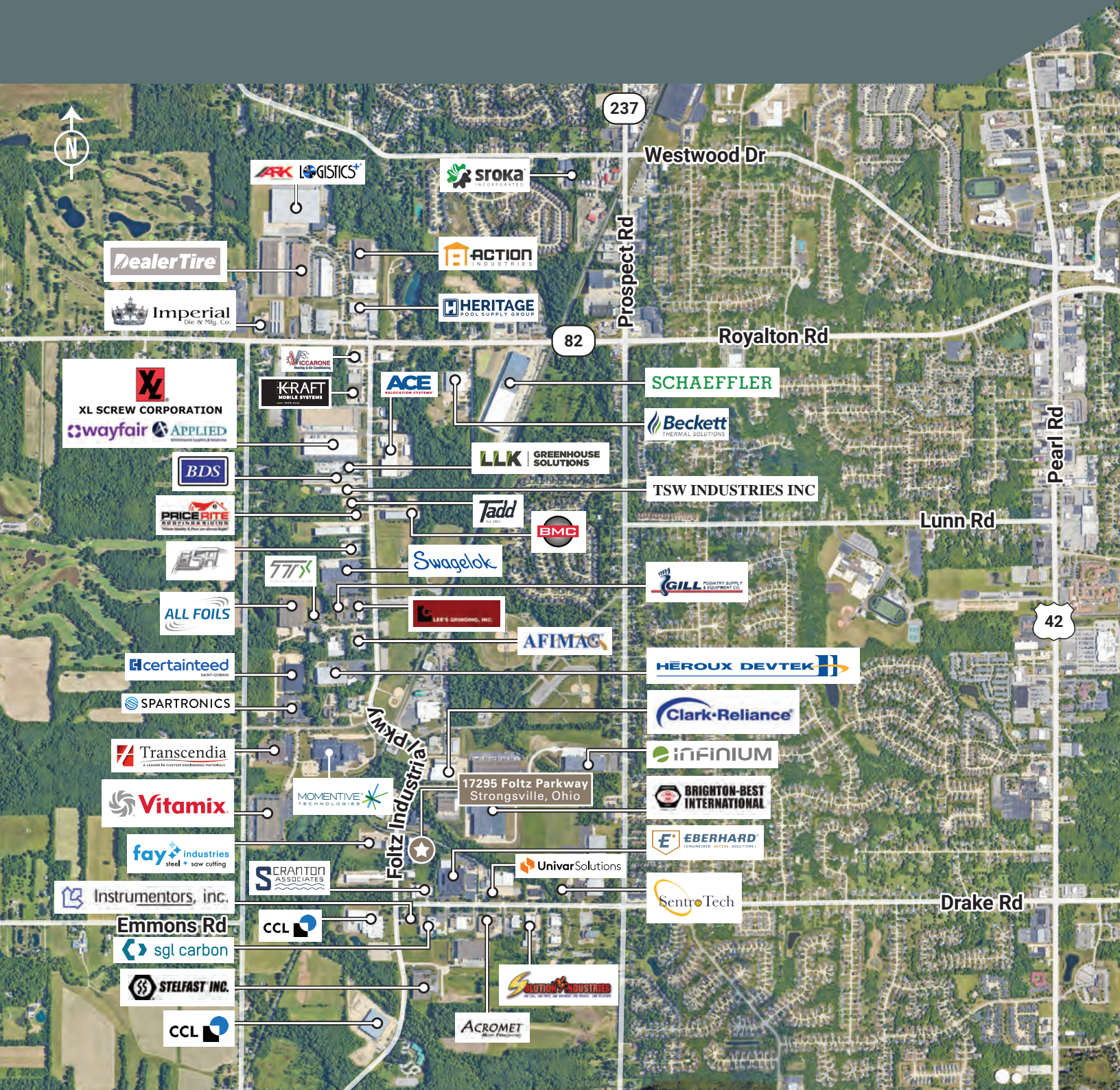
BUILDING MONUMENT SIGNAGE OPPORTUNITY

Back of Building
& Monument Sign

17295

Foltz Industrial Parkway | Strongsville, OH

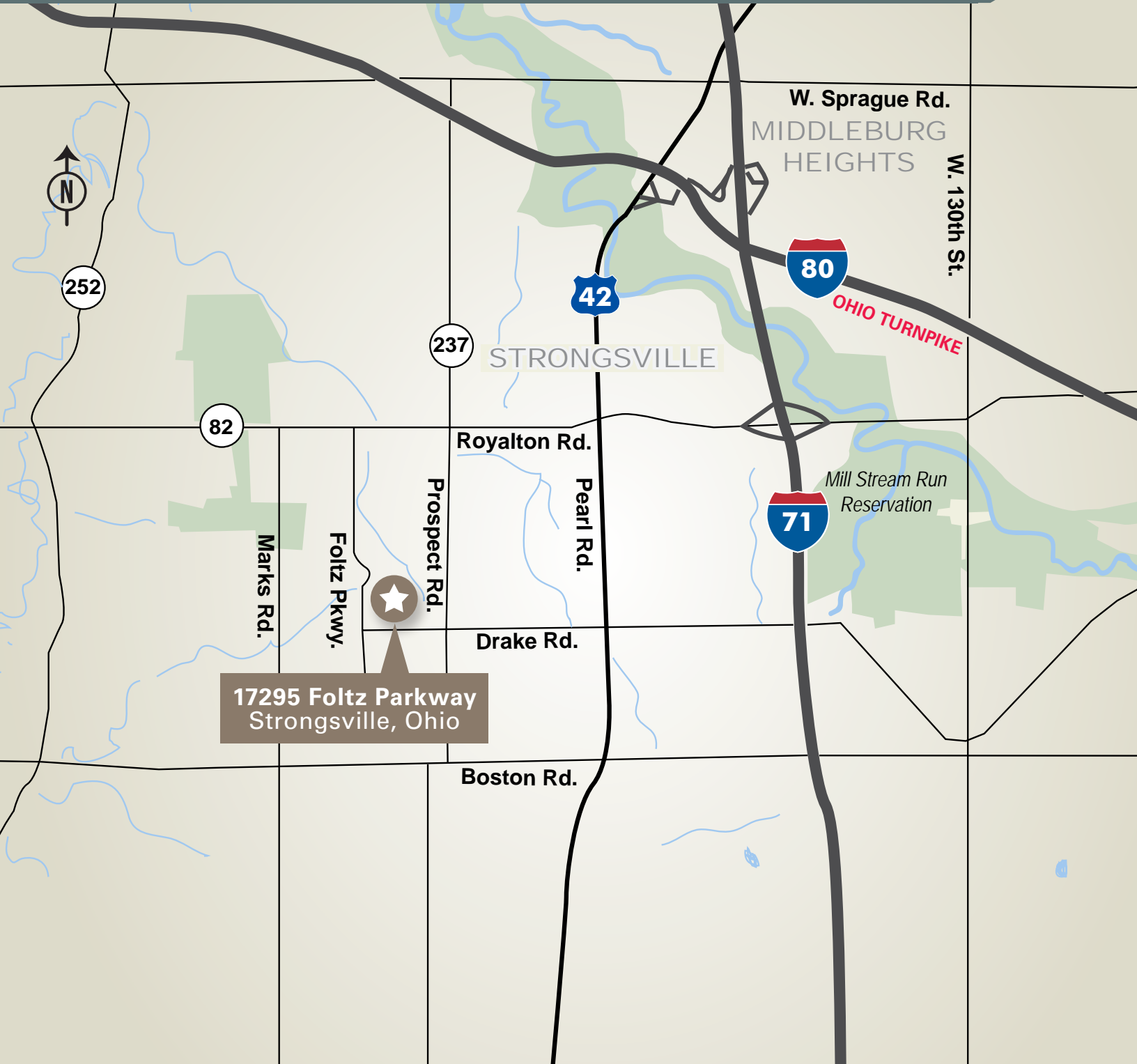
INDUSTRY AERIAL



17295

Foltz Industrial Parkway | Strongsville, OH

LOCATION MAP



17295 Foltz Parkway
Strongsville, Ohio

17295

Foltz Industrial Parkway | Strongsville, OH

17295

Foltz Industrial Parkway | Strongsville, OH



CONTACT



Terry Coyne
Executive Vice Chairman
216.218.0259
Terry.Coyne@nmrk.com
Licensed Real Estate Broker



Connor McCoy
Director
216.453.3085
Connor.McCoy@nmrk.com
Licensed Real Estate Salesperson

NEWMARK

Terry **COYNE**.com

The information contained herein has been obtained from sources deemed reliable but has not been verified and no guarantee, warranty or representation, either express or implied, is made with respect to such information. Terms of sale or lease and availability are subject to change or withdrawal without notice.