

PRICE
IMPROVEMENT!

**BERKSHIRE
HATHAWAY**
HOMESERVICES

UTAH
PROPERTIES

COMMERCIAL DIVISION



268 MAIN STREET

Historic Main Street in Park City | Executive Office Space For Lease

OLD TOWN 268 MAIN STREET | PARK CITY, UTAH 84060

LEASE RATE

\$1,200/month per office

Historic Park City Main Street executive office space available for lease. The available suites offer a fabulous private office, with high ceilings and beautiful finishes on Park City's most coveted street. Great opportunity for tenants seeking individual office space in Old Town. Conveniently located near China Bridge Garage and Brewpub parking lot. Contact Listing agents for more information or to schedule a tour.

- 10 EXECUTIVE SUITES AVAILABLE
- SECOND FLOOR OFFICE SPACE
- CONVENIENT PARKING ACCESS
- WELL-MAINTAINED

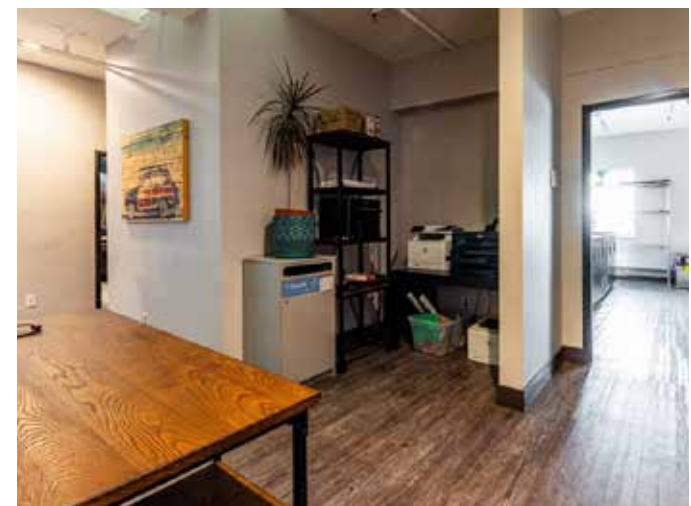
PROPERTY PHOTOS

268 MAIN STREET | PARK CITY, UTAH 84060



PROPERTY PHOTOS

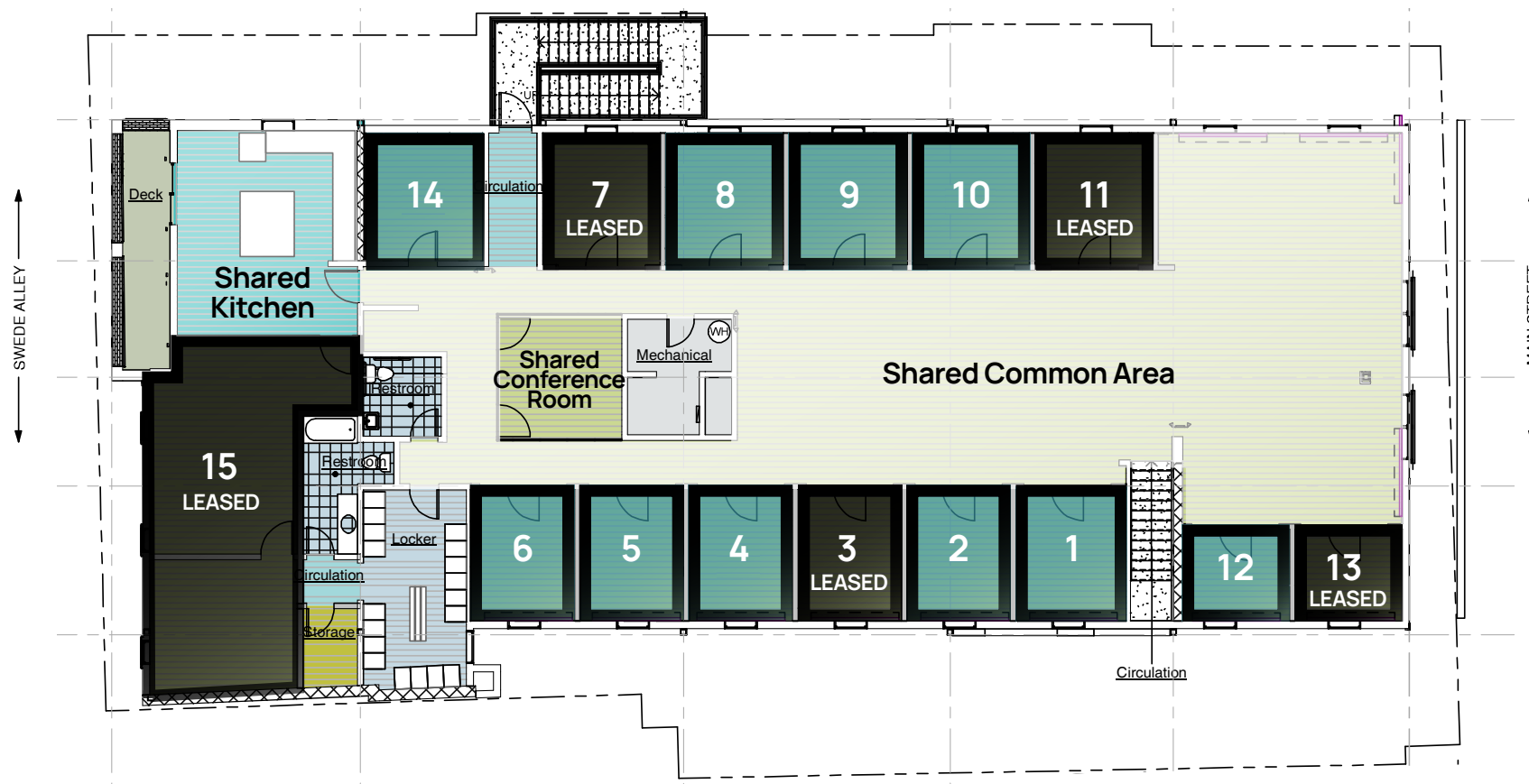
268 MAIN STREET | PARK CITY, UTAH 84060



UPPER LEVEL FLOORPLANS

268 MAIN STREET | PARK CITY, UTAH 84060

AVAILABLE



LOCATION

268 MAIN STREET | PARK CITY, UTAH 84060





OP ROCKWELL BUILDING
268 MAIN STREET
PARK CITY, UTAH 84060

- Prime Office Space on Park City's Historic Main Street
- Recently remodeled, with high end finishes including glass walled offices
- Open common areas
- Kitchen, lockers, showers, bring your skis!
- Adjacent to China Bridge Parking Garage
- Walk to world class shops, restaurants, and amenities



**CALL FOR MORE
INFORMATION**

i

BHHSUTAH.COM

JILL SNYDER
(435) 671-0793
jill@utahcre.com

TODD McLACHLAN
(801) 520-9005
todd@utahcre.com

CHELSEA WALL
(435) 671-3541
chelsea@utahcre.com

**BERKSHIRE
HATHAWAY** | UTAH
HOMESERVICES PROPERTIES

COMMERCIAL DIVISION