



Scott Daves | Realtor®

Commercial | Farm and Ranch | Leasing

Cell: 512-415-2265

Office: 512-894-3488 | Ext:5330

Email: SCOTT@STANBERRY.COM

**STANBERRY
COMMERCIAL**

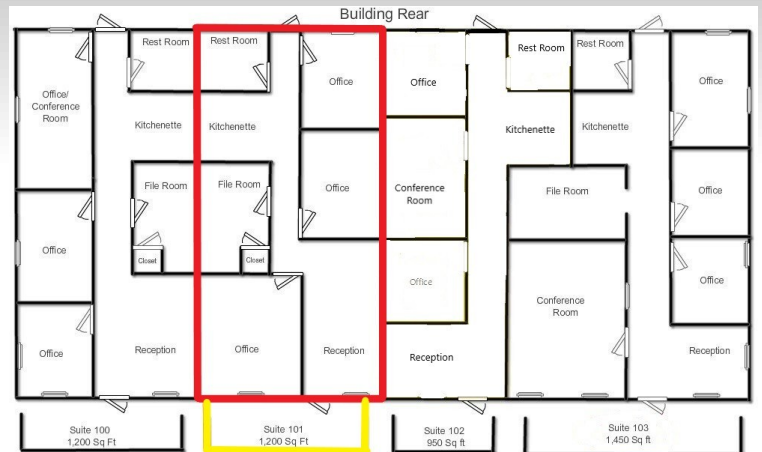
FOR LEASE

701 US 290 STE #101

DRIPPING SPRINGS

\$1.92 + NNN PSF

Featuring 1,200 square feet of office space located in the vibrant heart of Dripping Springs, just 30 minutes away from Austin. This property boasts an efficient layout, including a welcoming reception area, two private offices, and a versatile space that can serve as an additional office or a conference room. Further enhancing its functionality is a convenient restroom and a practical kitchenette area, catering to all your business needs. Situated with frontage on the bustling Highway 290, this office space ensures high visibility and ease of access. Ample parking space adds to the list of conveniences, making it an ideal location for businesses seeking a professional environment. Step into this opportunity to position your business in a dynamic and growing area.



Building Front
Drawing not to scale, square footage is approximate
Dripping Springs Professional Center
701 Hwy 290W
Dripping Springs, TX 78620