

1251 N. MAIN STREET
ANN ARBOR, MICHIGAN

INDUSTRIAL FOR SALE
4,000 Square Feet Available



**SIGNATURE
ASSOCIATES**
KNOW SIGNATURE | KNOW RESULTS

REDEVELOPMENT OPPORTUNITY



PROPERTY FEATURES

- 4,000 square feet available
- 18' clear height
- (2) 12' x 10' grade level doors
- Located on 1.1 acres
- Auto Body Shop or redevelopment opportunity
- Zoned Fringe Commercial
- Sale Price: Contact Broker



For more information, please contact:

DRAKE FILIPPIS
(248) 799 3161
dfilippis@signatureassociates.com

JAY CHAVEY
(248) 948 4196
jchavey@signatureassociates.com

SIGNATURE ASSOCIATES
One Towne Square, Suite 1200
Southfield, MI 48076
www.signatureassociates.com

1251 N. Main Street – Ann Arbor, Michigan

Industrial For Sale

4,000
Square Feet
AVAILABLE

Additional Photos



For more information, please contact:

DRAKE FILIPPIS

(248) 799 3161

dfilippis@signatureassociates.com

JAY CHAVEY

(248) 948 4196

jchavey@signatureassociates.com

SIGNATURE ASSOCIATES

One Towne Square, Suite 1200

Southfield, MI 48076

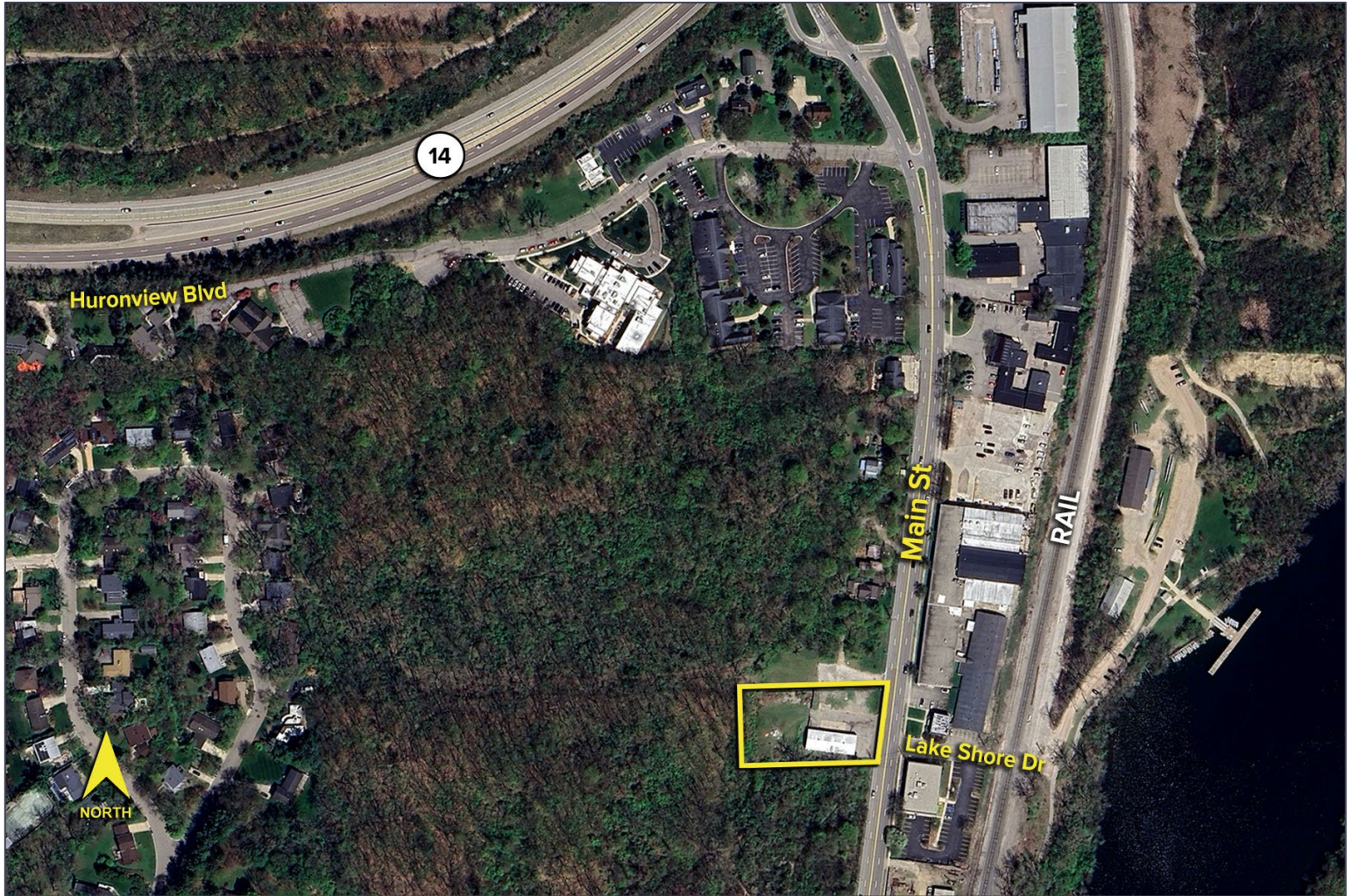
www.signatureassociates.com

1251 N. Main Street – Ann Arbor, Michigan

Industrial For Sale

4,000
Square Feet
AVAILABLE

Aerial



For more information, please contact:

DRAKE FILIPPIS

(248) 799 3161

dfilippis@signatureassociates.com

JAY CHAVEY

(248) 948 4196

jchavey@signatureassociates.com

SIGNATURE ASSOCIATES

One Towne Square, Suite 1200

Southfield, MI 48076

www.signatureassociates.com