

# 212 & 214 PACKETS COURT

Williamsburg, Virginia

OFFICE CONDOMINIUMS | FOR LEASE



Andy Dallas, CCIM, SIOR | [andy.dallas@thalhimer.com](mailto:andy.dallas@thalhimer.com) | 757 873 3661



Independently Owned and Operated / A Member of the Cushman & Wakefield Alliance

Cushman & Wakefield | Thalhimer © 2026. No warranty or representation, express or implied, is made to the accuracy or completeness of the information contained herein, and same is submitted subject to errors, omissions, change of price, rental or other conditions, withdrawal without notice, and to any special listing conditions imposed by the property owner(s). As applicable, we make no representation as to the condition of the property (or properties) in question.

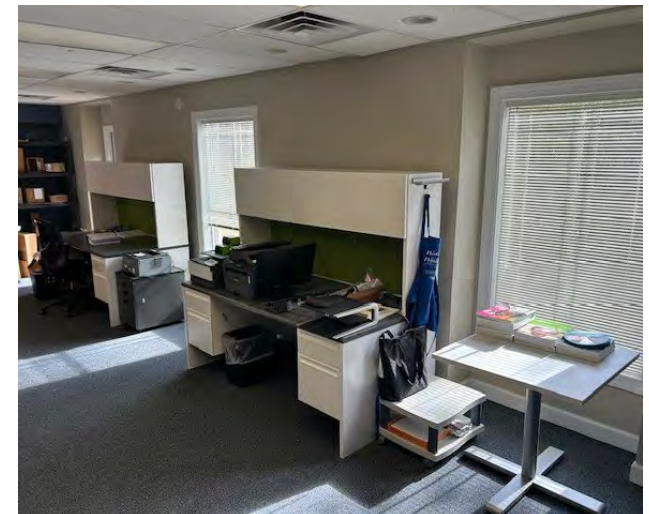
# 212 & 214 PACKETS COURT

Williamsburg, Virginia

OFFICE CONDOMINIUMS | FOR LEASE

## PROPERTY DETAILS

- Professional office suites for lease
- Suites: 212A - 1,045 SF  
212C - 1,045 SF } can be combined for 2,090 SF  
214A - 1,183 SF
- Lease Rate: \$15.50/SF Modified Gross
- Tenant pays utilities, janitorial & IT/data
- Variety of floor plan designs available
- Parking immediately adjacent to the building for easy access (no steps or stairs to enter premises)
- Outdoor patio and green space behind building for peaceful outdoor space



# 212 & 214 PACKETS COURT

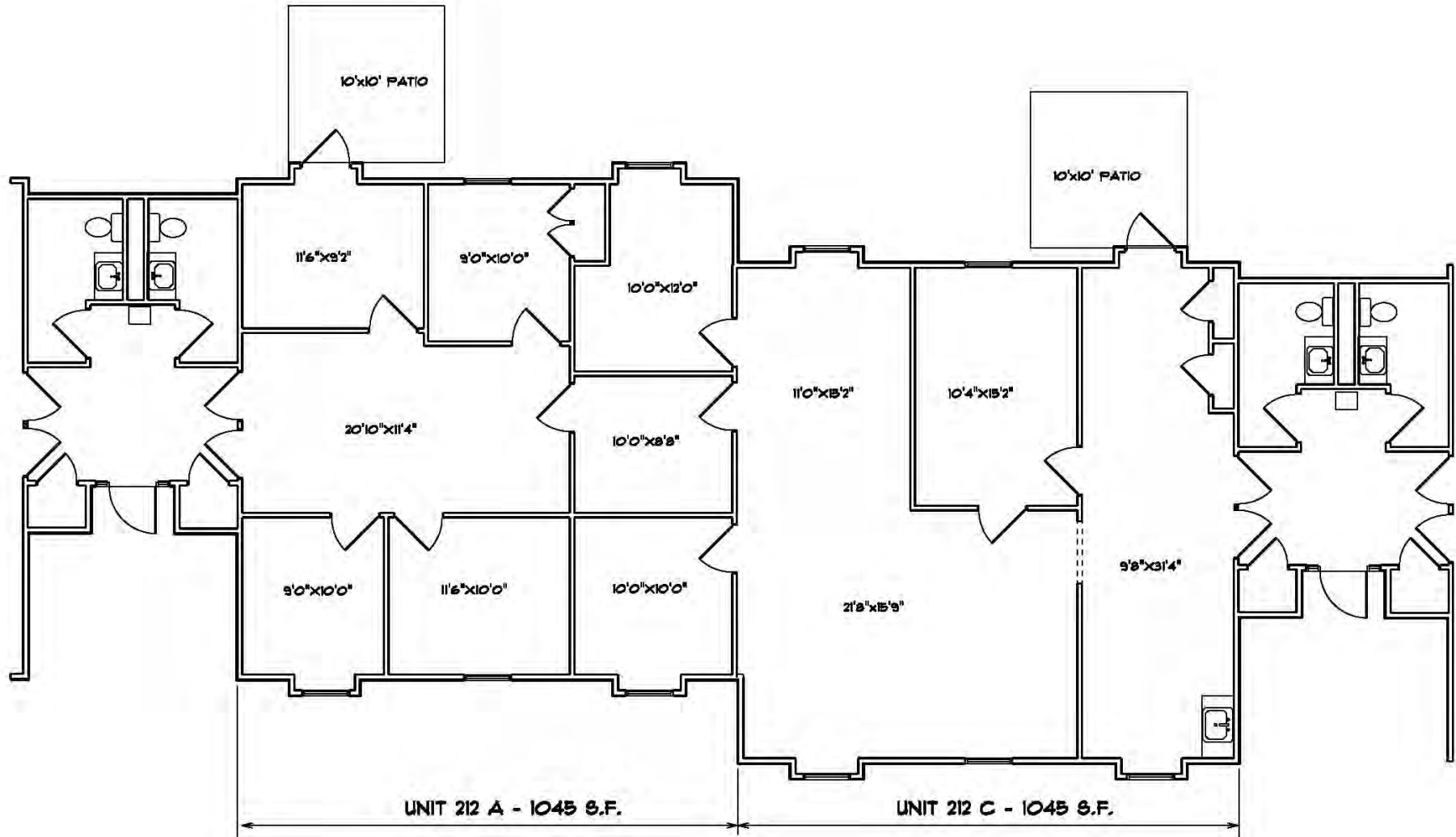
Williamsburg, Virginia

OFFICE CONDOMINIUMS | FOR LEASE



# 212 & 214 PACKETS COURT Williamsburg, Virginia

OFFICE CONDOMINIUMS | FOR LEASE



# 212 & 214 PACKETS COURT Williamsburg, Virginia

OFFICE CONDOMINIUMS | FOR LEASE

## DEMOGRAPHICS (1 MILE)

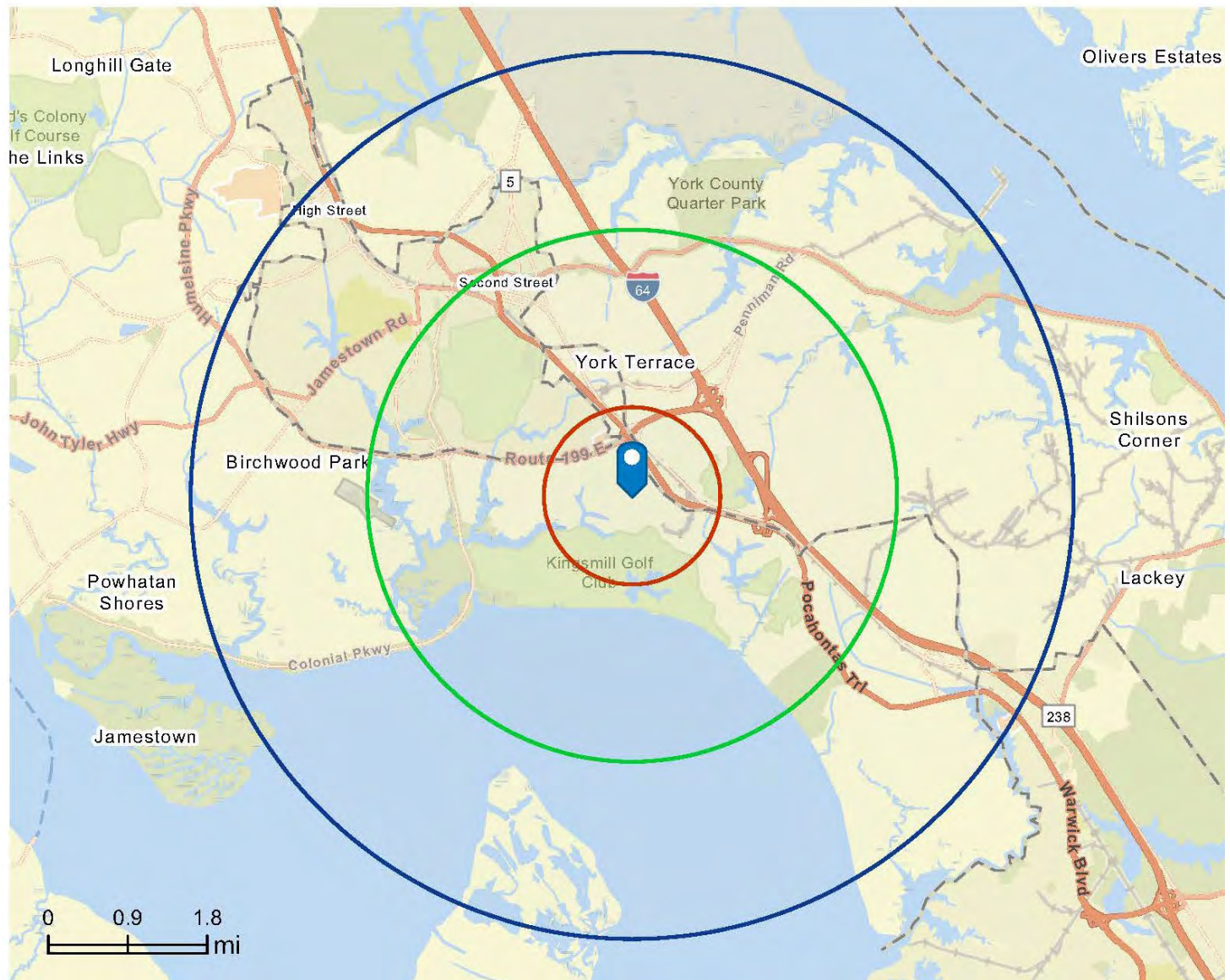
Estimated Population:	3,027
Average HH Income:	\$192,491
Number of Households:	1,286
Median Age:	54.7

## DEMOGRAPHICS (3 MILE)

Estimated Population:	18,525
Average HH Income:	\$142,158
Number of Households:	7,452
Median Age:	42.7

## DEMOGRAPHICS (5 MILE)

Estimated Population:	44,889
Average HH Income:	\$132,797
Number of Households:	16,885
Median Age:	38.7



# 212 & 214 PACKETS COURT

Williamsburg, Virginia

**For more information, please contact:**

Andy Dallas, CCIM, SIOR | [andy.dallas@thalhimer.com](mailto:andy.dallas@thalhimer.com) | 757 873 3661



One BayPort Way  
Suite 100  
Newport News, VA 23606  
[thalhimer.com](http://thalhimer.com)

Independently Owned and Operated / A Member of the Cushman & Wakefield Alliance

Cushman & Wakefield | Thalhimer © 2026. No warranty or representation, express or implied, is made to the accuracy or completeness of the information contained herein, and same is submitted subject to errors, omissions, change of price, rental or other conditions, withdrawal without notice, and to any special listing conditions imposed by the property owner(s). As applicable, we make no representation as to the condition of the property (or properties) in question.