



FOR LEASE - ±27,500 SF INDUSTRIAL UNIT

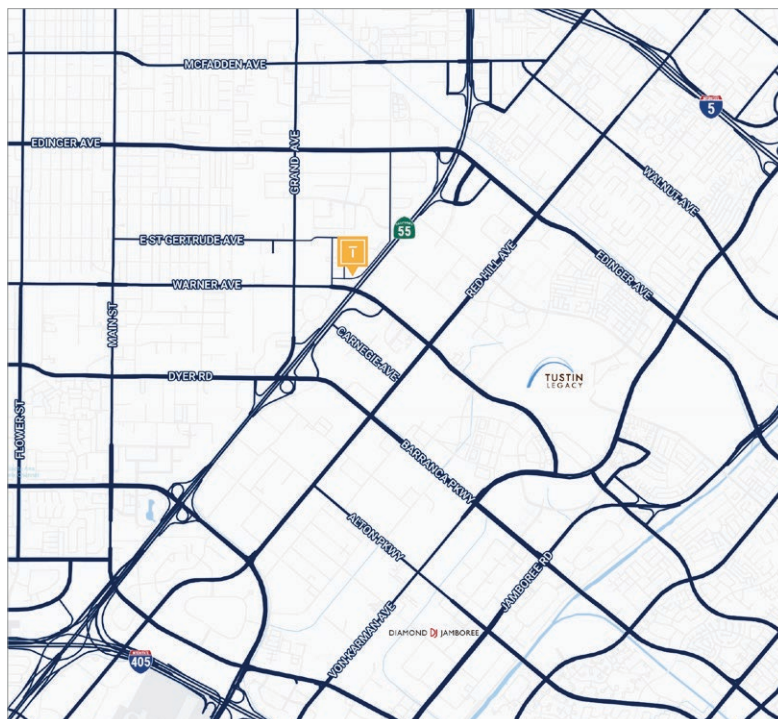
2228 RITCHEY STREET | SANTA ANA, CA

\$.99 PSF NNN/Mo.
First Year Lease Rate



PROPERTY FEATURES:

- » ±27,500 SF Industrial Unit
- » ±4,492 SF of Office
- » ±3,048 SF Open Office/Production Area
- » Four (4) Dock High Loading Positions
- » One (1) Ground Level Loading Door
- » 22' Warehouse Clear Height
- » Fire Sprinklers
- » Drive Around Building
- » Concrete Parking and Loading Areas
- » 400 Amps of Power (verify)
- » Good Access to the Costa Mesa (55) and Santa Ana (5) Freeway
- » **Vacant and Ready for Occupancy**



CONTACT US:

TIDEMARK
Real Estate Services

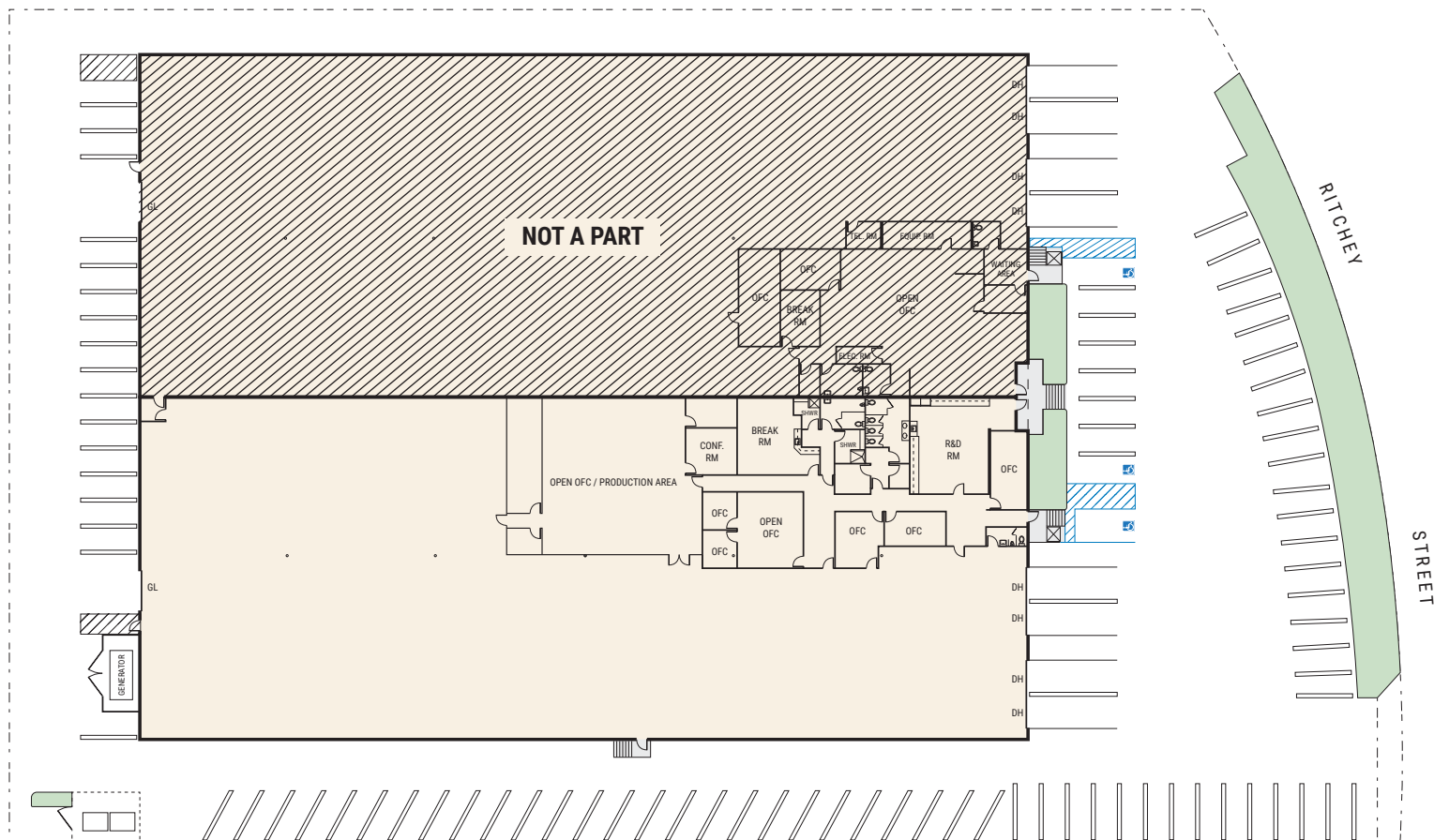
**BROKERAGE | INVESTMENTS
PROPERTY MANAGEMENT**

PAT LACEY
Executive Director
(714) 875-4134
pat@tidemarkrealestate.com
DRE Lic. 00988663

TAYLOR SNYDER, MBA
Senior Vice President
(949) 533-1321
taylor@tidemarkrealestate.com
DRE Lic. 02092420

WILL GREUBEL
Senior Vice President
(714) 614-7623
will@tidemarkrealestate.com
DRE Lic. 02039807

DISCLAIMER: The information contained herein has been obtained from the property owner or other third party and is provided to you without verification as to accuracy. We (Tidemark Real Estate Services, Inc., its brokers, employees, agents, principals, officers, directors and affiliates) make no warranty or representation regarding the information, property, or transaction. You and your attorneys, advisors and consultants should conduct your own investigation of the property and transaction.



CONTACT US:

TIDEMARK
Real Estate Services
**BROKERAGE | INVESTMENTS
PROPERTY MANAGEMENT**

PAT LACEY
Executive Director
(714) 875-4134
pat@tidemarkrealestate.com
DRE Lic. 00988663

TAYLOR SNYDER, MBA
Senior Vice President
(949) 533-1321
taylor@tidemarkrealestate.com
DRE Lic. 02092420

WILL GREUBEL
Senior Vice President
(714) 614-7623
will@tidemarkrealestate.com
DRE Lic. 02039807

DISCLAIMER: The information contained herein has been obtained from the property owner or other third party and is provided to you without verification as to accuracy. We (Tidemark Real Estate Services, Inc., its brokers, employees, agents, principals, officers, directors and affiliates) make no warranty or representation regarding the information, property, or transaction. You and your attorneys, advisors and consultants should conduct your own investigation of the property and transaction.