



# 1520 G Avenue

**7,000 SF, 2-STORY BUILDING FOR SALE**

NE Corner of 15<sup>th</sup> St and Avenue G | Plano, Texas 75074

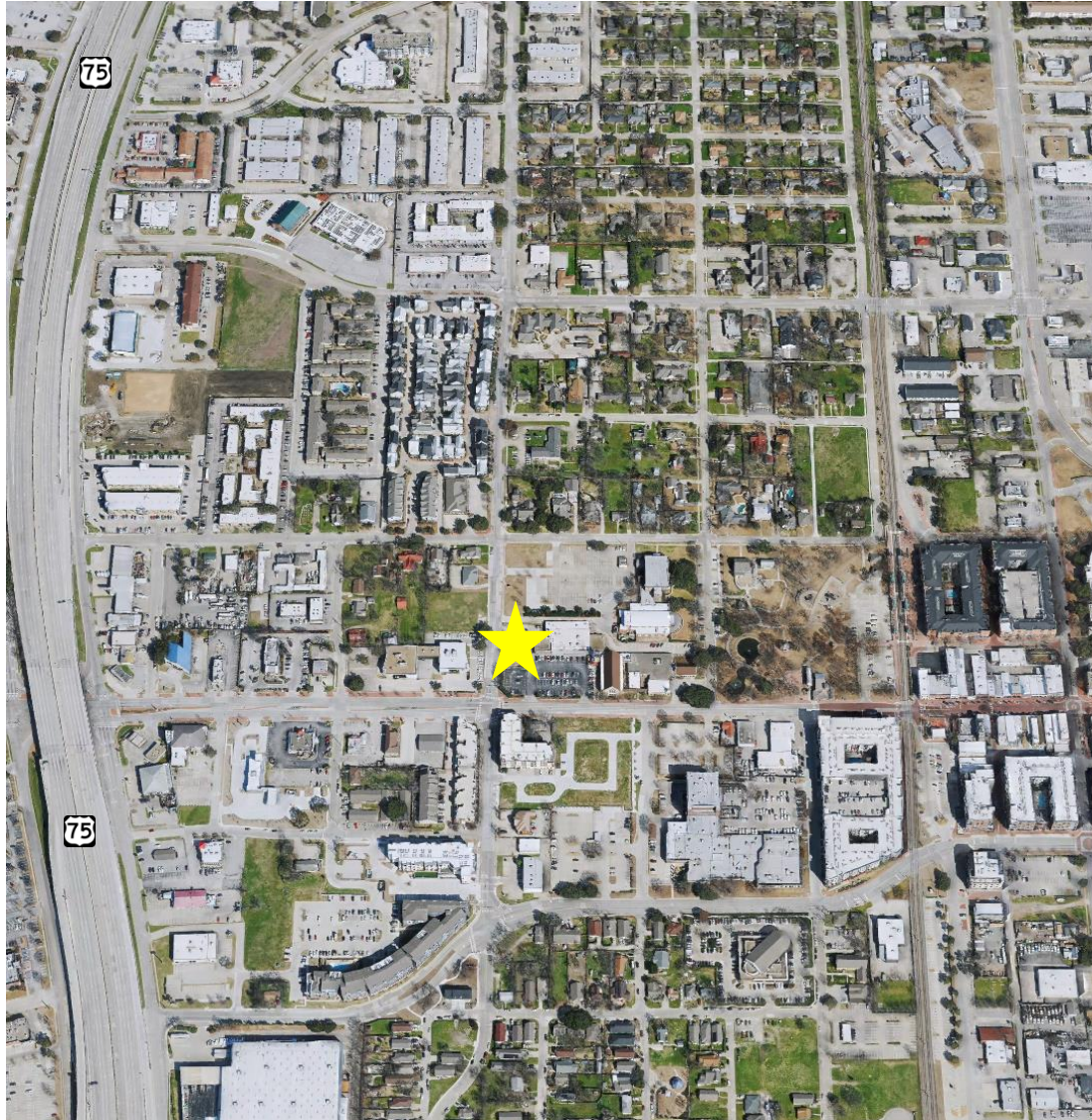
**RCP**



# 1520 G Avenue

OFFICE / FOR SALE

Plano, Texas 75074



## Plano, TX

- 2-story office building
- 7,000 square feet
- Walkable amenities include restaurants, living, shopping, banking, entertainment & courtyard theatre
- Located a short walk from historic Downtown Plano at the **NE corner of 15<sup>th</sup> Street & G Avenue** with direct access to Central Expressway Hwy 75
- 28 parking spaces
- Zoned BG – Downtown Business/Government

# 1520 G Avenue

OFFICE / FOR SALE

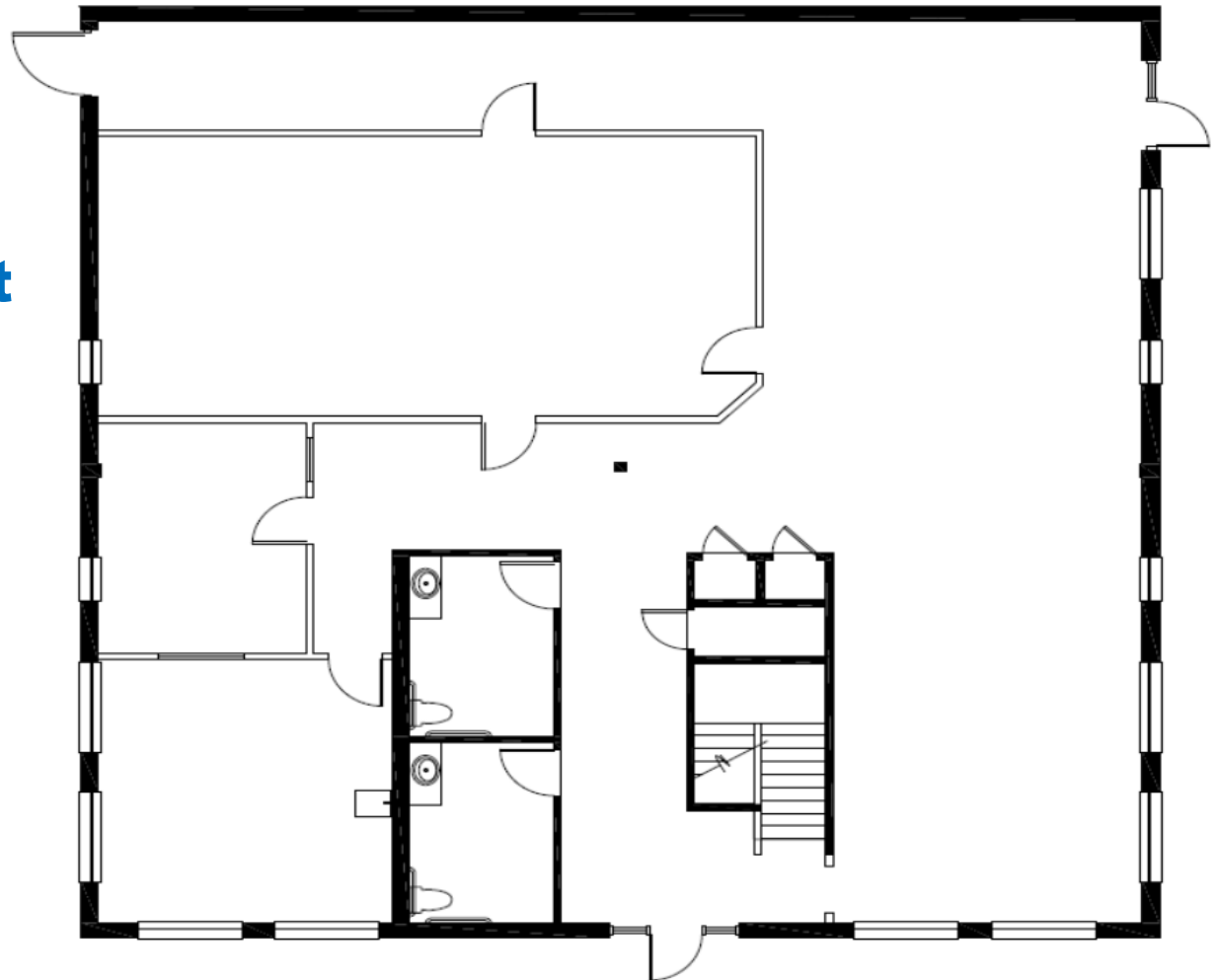
Plano, Texas 75074



## Ground Floor As-Built

### *Single Tenant Building*

Ground Floor: 3,500 RSF



# 1520 G Avenue

OFFICE / FOR SALE

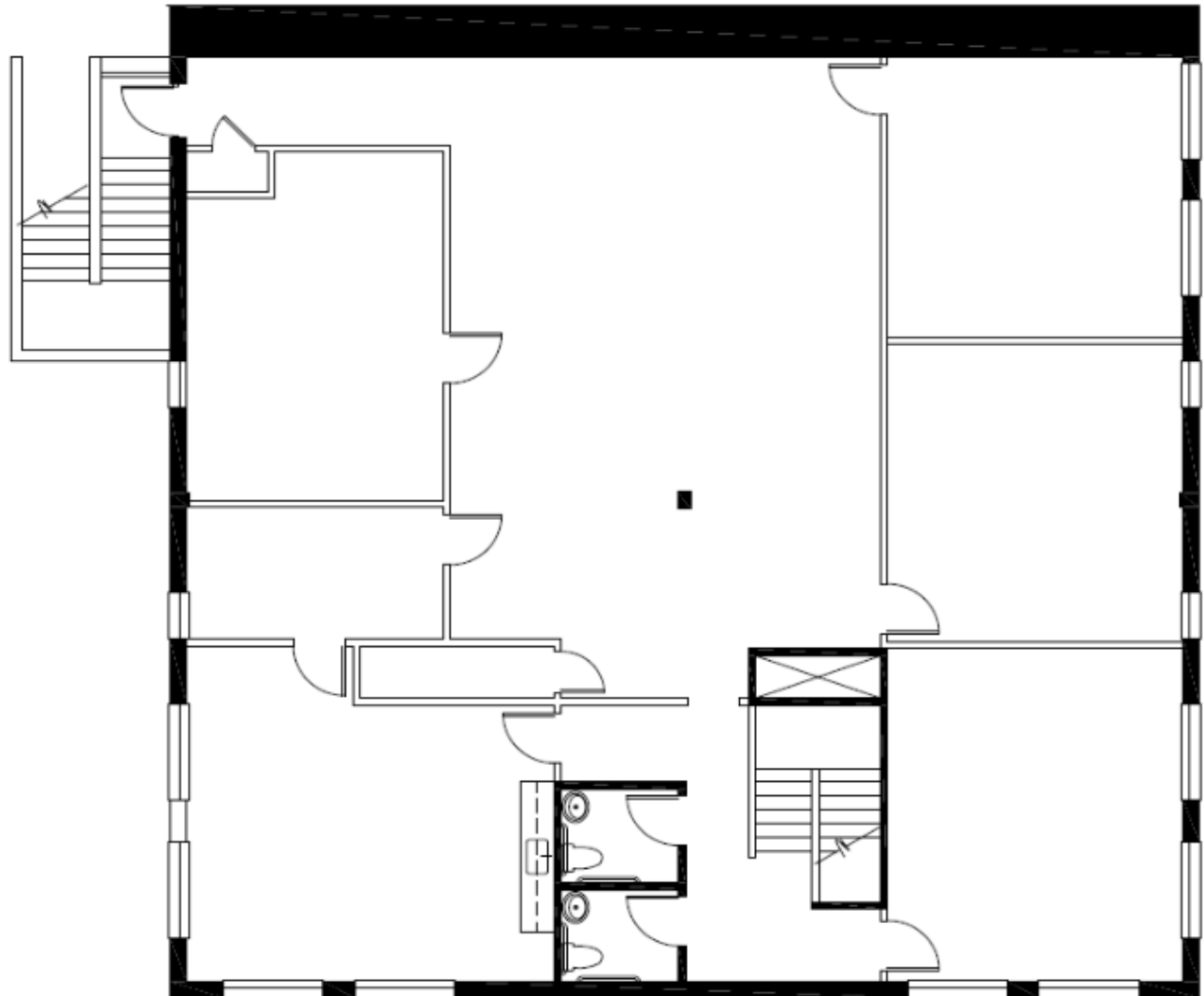
Plano, Texas 75074



## Floor 2 As-Built

*Single Tenant Building*

Second Floor: 3,500 RSF





# 1520 G Avenue

OFFICE / FOR SALE

Plano, Texas 75074

**RCP** **RESERVE**  
CAPITAL PARTNERS



# Property Contact

**Nathan Rylander**

[nathan@reservecappartners.com](mailto:nathan@reservecappartners.com)

c 972.955.1067



The information presented was obtained from sources deemed reliable;  
however, Reserve Capital Partners does not guarantee its completeness or accuracy.

©RESERVE CAPITAL PARTNERS LLC | RESERVECAPPARTNERS.COM

12404 Park Central Dr. Suite 250-S

Dallas, TX 75251

214.983.1360