

Real Estate
Auction

6.19 ACRES WITH 4 BUILDINGS

24 Riner Farm Rd. / US HWY 1, Swainsboro, GA
Emanuel County



BIDDING ENDS SEPTEMBER 25TH



Brent Stephens, Auction Manager

912.259.4789

brent@southauctiongroup.com

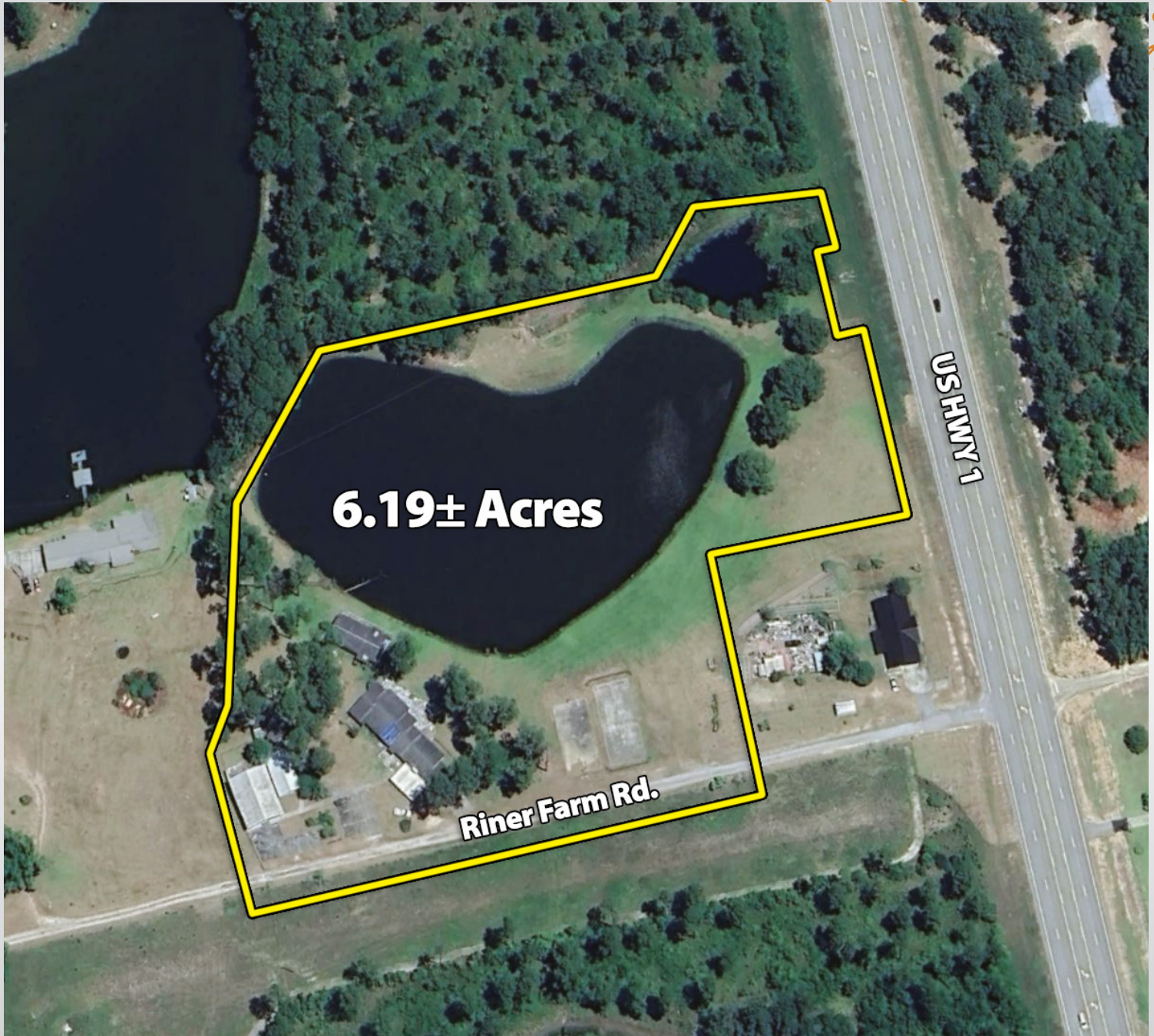


**SOUTH
AUCTION**

SouthAuction.com

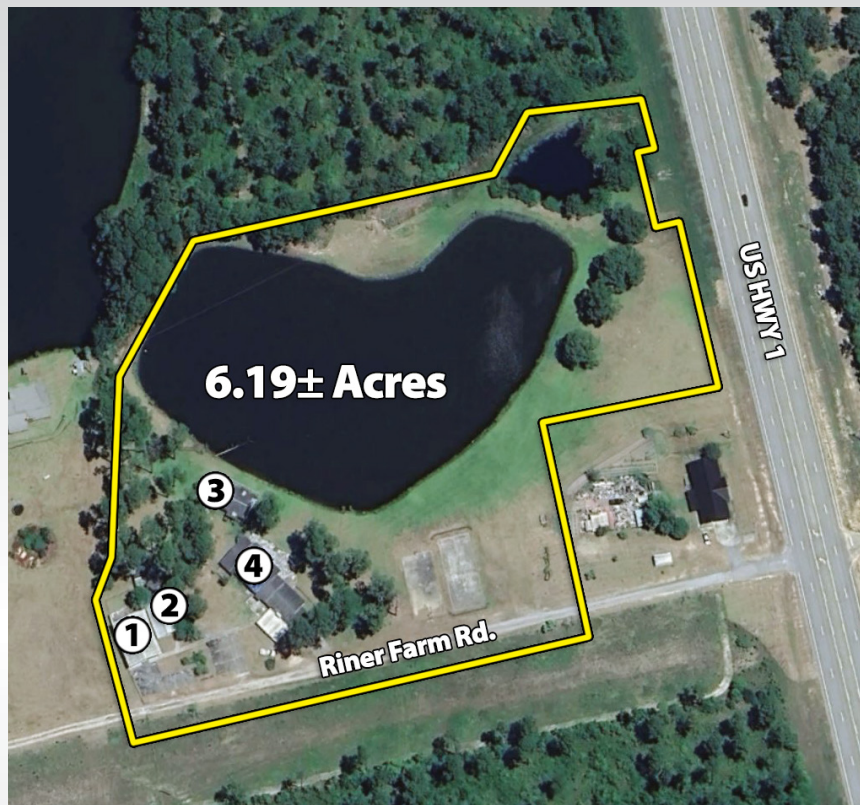


AERIAL MAP





BUILDING MAP



Building #1

- 40x50 Metal Shop
- 3 Rooms Total with Storage Loft



Building #2

- 22x40
- Large Open Room, Office & Half Bath



Building #3

- 28x60 Mobile Home
- 2 Large Open Rooms
- Kitchen & 2 Half Baths

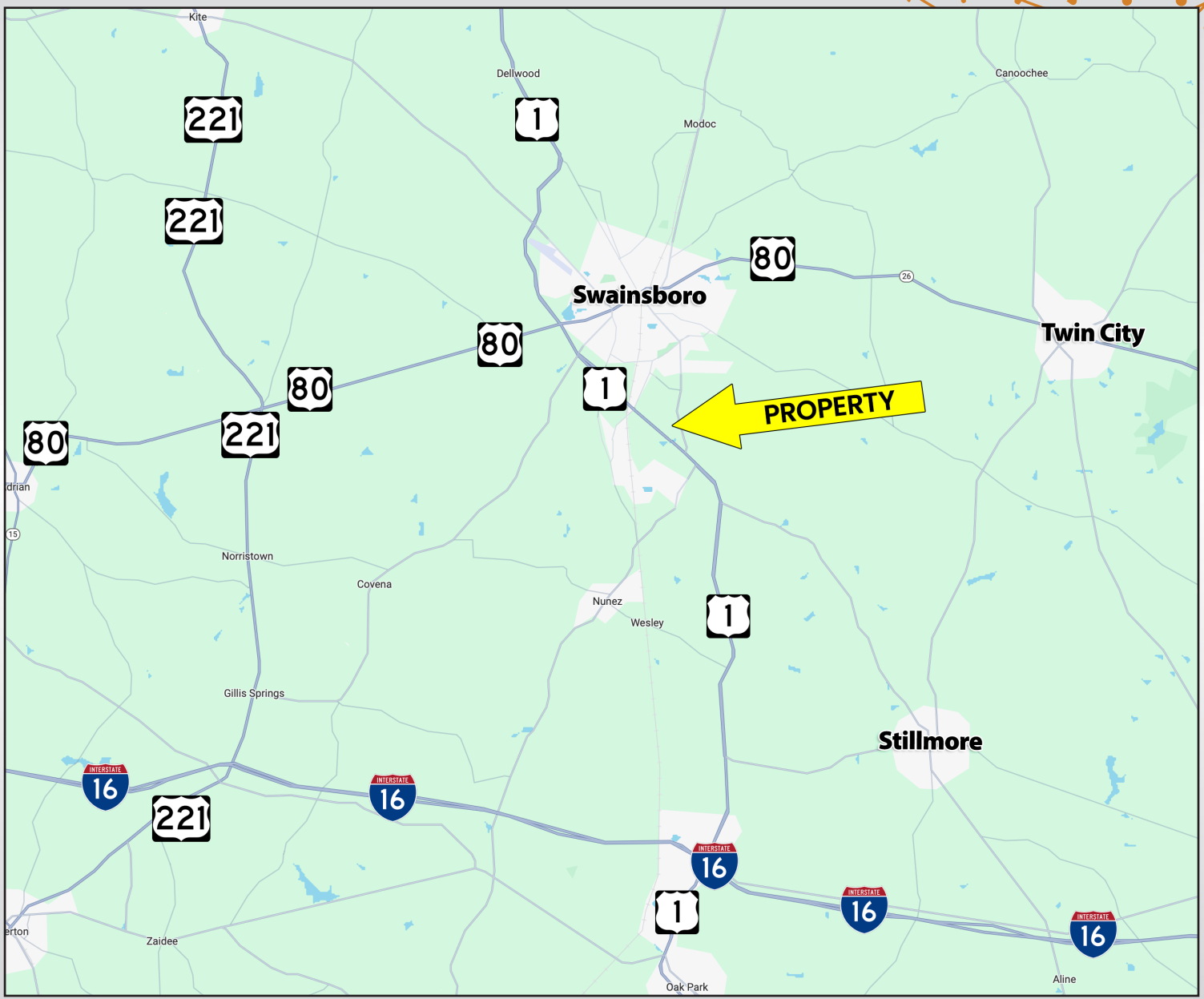


Building #4

- 4,457 SQ. FT.
- 8 Bed | 6 Full Bath
- 1 Kitchen
- 2 Large Living Rooms
- Reception Area & Office
- Laundry

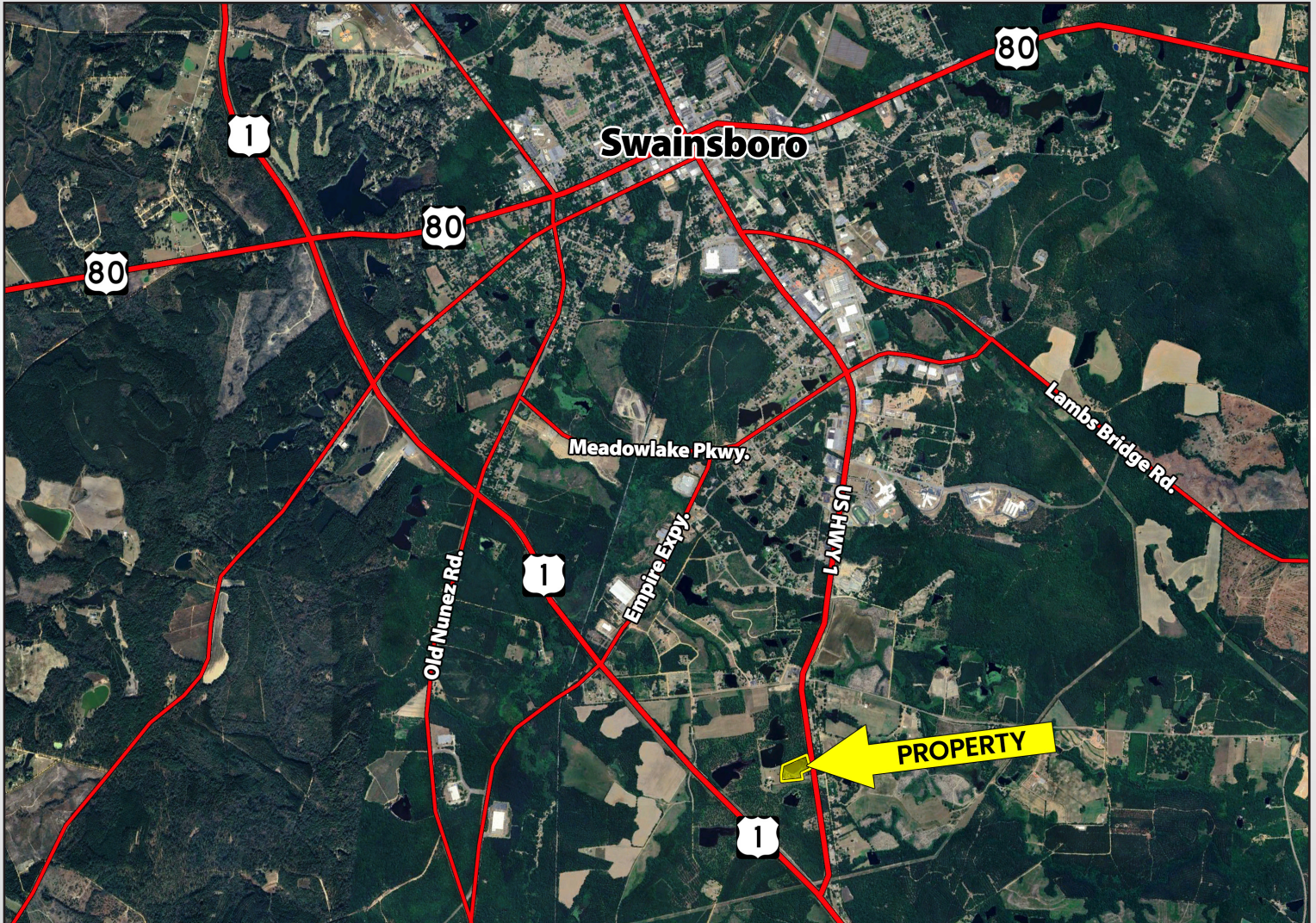


PROPERTY LOCATION





LOCATION MAP





PROPERTY PHOTOS

