

FOR SUBLEASE AVAILABLE  
**5,113 SF**



10400 W. 103<sup>RD</sup> STREET  
**OVERLAND PARK, KS 66214**

10400 W. 103RD STREET | OVERLAND PARK, KS 66214

# PROPERTY HIGHLIGHTS

- Plug & Play sublease space offering flexible size options.
- Sublease available thru September 30, 2028
- Existing furniture negotiable
- Highly visible signage possible on building monument sign on 103rd Street
- \$19.50 SF including utilities. Janitorial by Tenant.
- Excellent access to US-69 Highway along with proximity to numerous nearby restaurants, retail services and business amenities.

## SUITE 10

- 2,739 SF
- Available immediately

## SUITE 14

- 2,374 SF
- Available May 1, 2026 with the opportunity to secure up to 5,113 SF

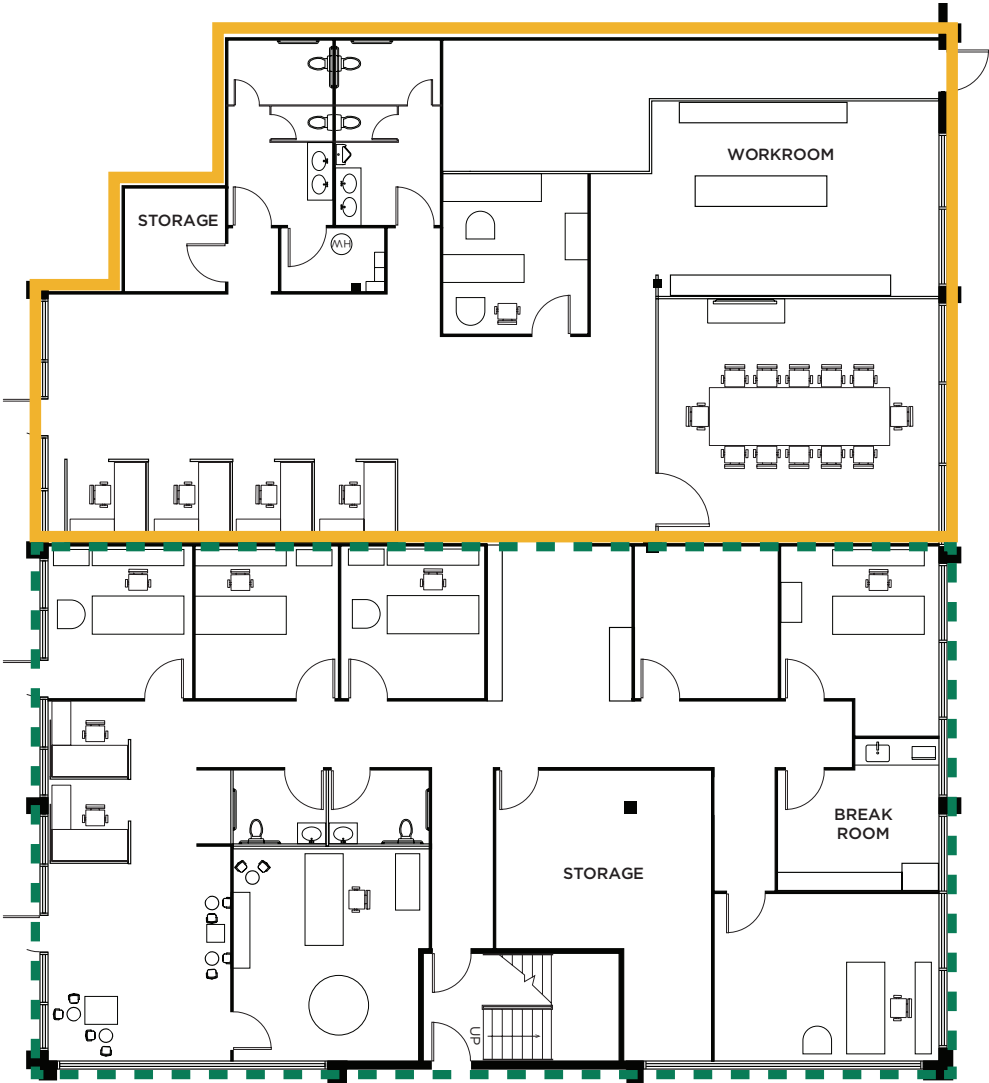


# UP TO 5,113 SF AVAILABLE SPRING 2026

## CONCEPTUAL DRAWING

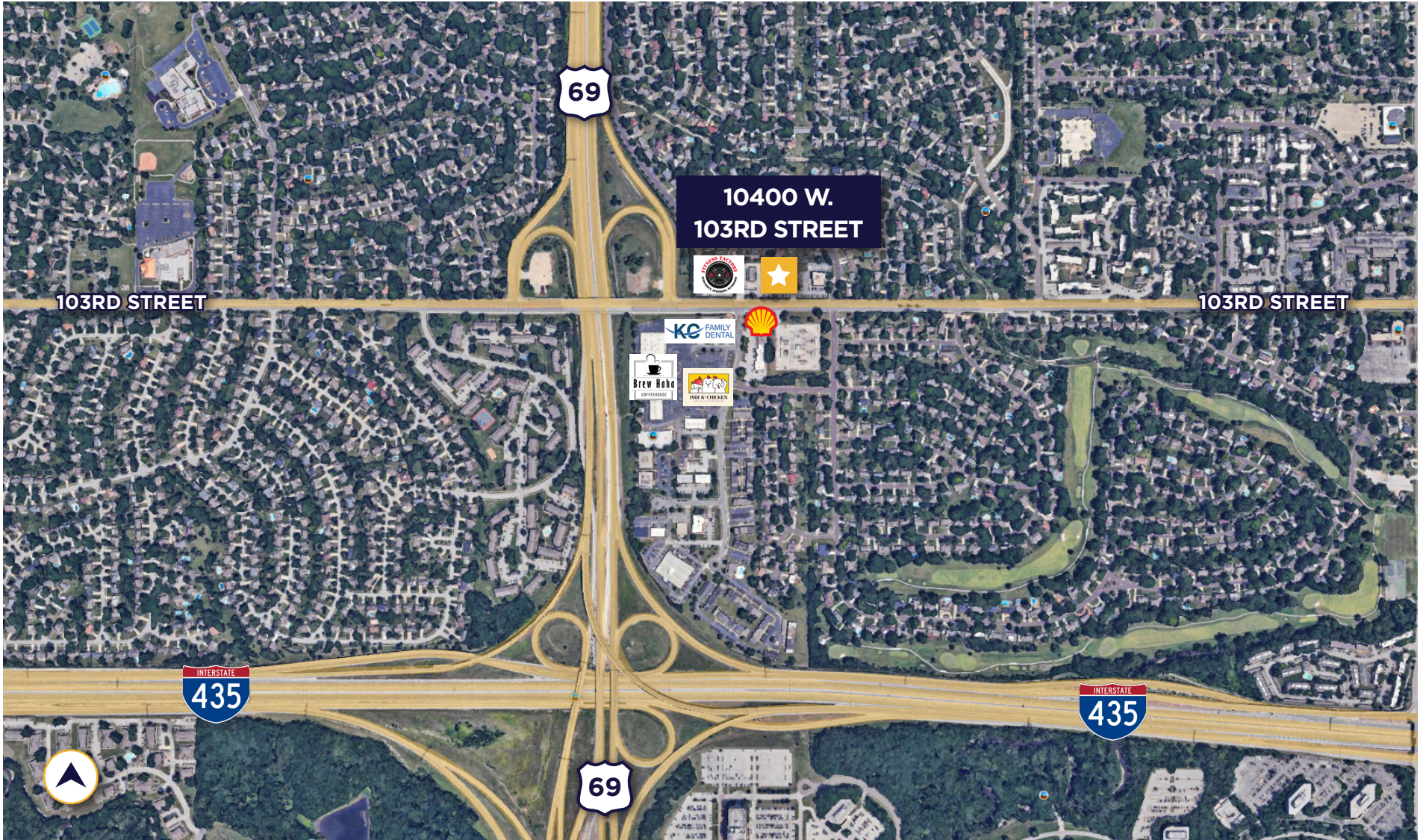
**SUITE 14**  
2,374 SF  
AVAILABLE: MAY 1, 2026

**SUITE 10**  
2,739 SF  
AVAILABLE NOW



# FLOOR PLAN

# AERIAL MAP





# CONTACT INFORMATION

## **MARTY GILCHRIST, CCIM**

Senior Associate

Direct: +1 816 216 5655

Mobile: +1 316 393 0703

Fax: +1 816 842 2798

[marty.gilchrist@cushwake.com](mailto:marty.gilchrist@cushwake.com)

