

# FORMER BANK

200 N COLLEGE STREET, PIQUA, OH 45356

Free-Standing Retail/Office Building / For Sale



**Andrew Sellet** / Managing Director / [andrew.sellet@cushwake.com](mailto:andrew.sellet@cushwake.com) / +1 513 763 3053

**Clare Holtmeier** / Associate / [clare.holtmeier@cushwake.com](mailto:clare.holtmeier@cushwake.com) / +1 513 322 0748

**WE ARE  
THE CENTER  
OF RETAIL**

**CUSHWAKERETAIL.COM**

©2021 Cushman & Wakefield. All rights reserved. The information contained in this communication is strictly confidential. This information has been obtained from sources believed to be reliable but has not been verified. NO WARRANTY OR REPRESENTATION, EXPRESS OR IMPLIED, IS MADE AS TO THE CONDITION OF THE PROPERTY (OR PROPERTIES) REFERENCED HEREIN OR AS TO THE ACCURACY OR COMPLETENESS OF THE INFORMATION CONTAINED HEREIN, AND SAME IS SUBMITTED SUBJECT TO ERRORS, OMISSIONS, CHANGE OF PRICE, RENTAL OR OTHER CONDITIONS, WITHDRAWAL WITHOUT NOTICE, AND TO ANY SPECIAL LISTING CONDITIONS IMPOSED BY THE PROPERTY OWNERS). ANY PROJECTIONS, OPINIONS OR ESTIMATES ARE SUBJECT TO UNCERTAINTY AND DO NOT SIGNIFY CURRENT OR FUTURE PROPERTY PERFORMANCE.



## Free-Standing Retail Building / For Sale

### RETAIL BLDG

6,800 SF (Incl. Basement)  
.74 Acres

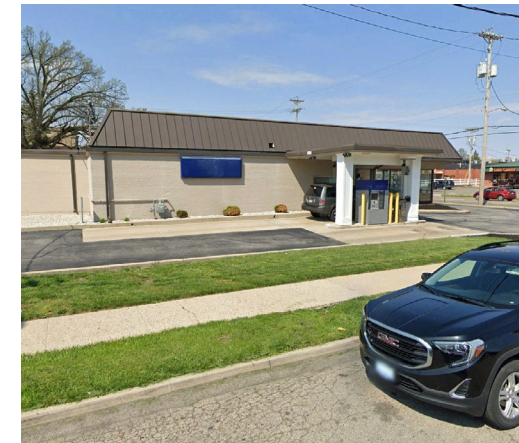
### LEASE PRICE

\$550,000

**FOR SALE ONLY!**

### COMMENTS

- Former Bank building with (1) drive-thru lane
- 1st Floor - 3,400 SF
- 45± Parking Spaces
- Built in 1988
- Great for Office, Retail or Redevelopment use
- Pylon signage available
- Corner lot with great visibility
- **SOLD AS IS!**



## NEIGHBORHOOD DEMOGRAPHICS



### POPULATION

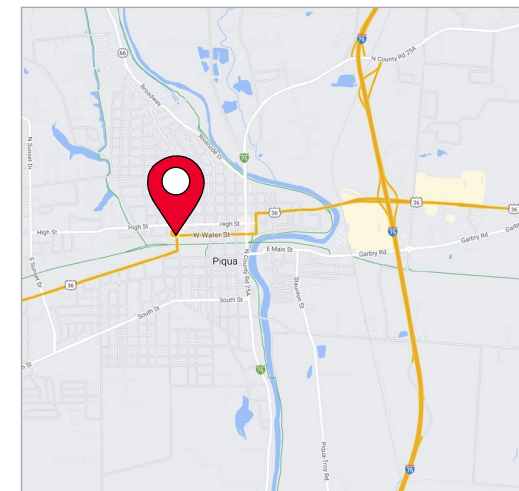


### AVERAGE HOUSEHOLD INCOME

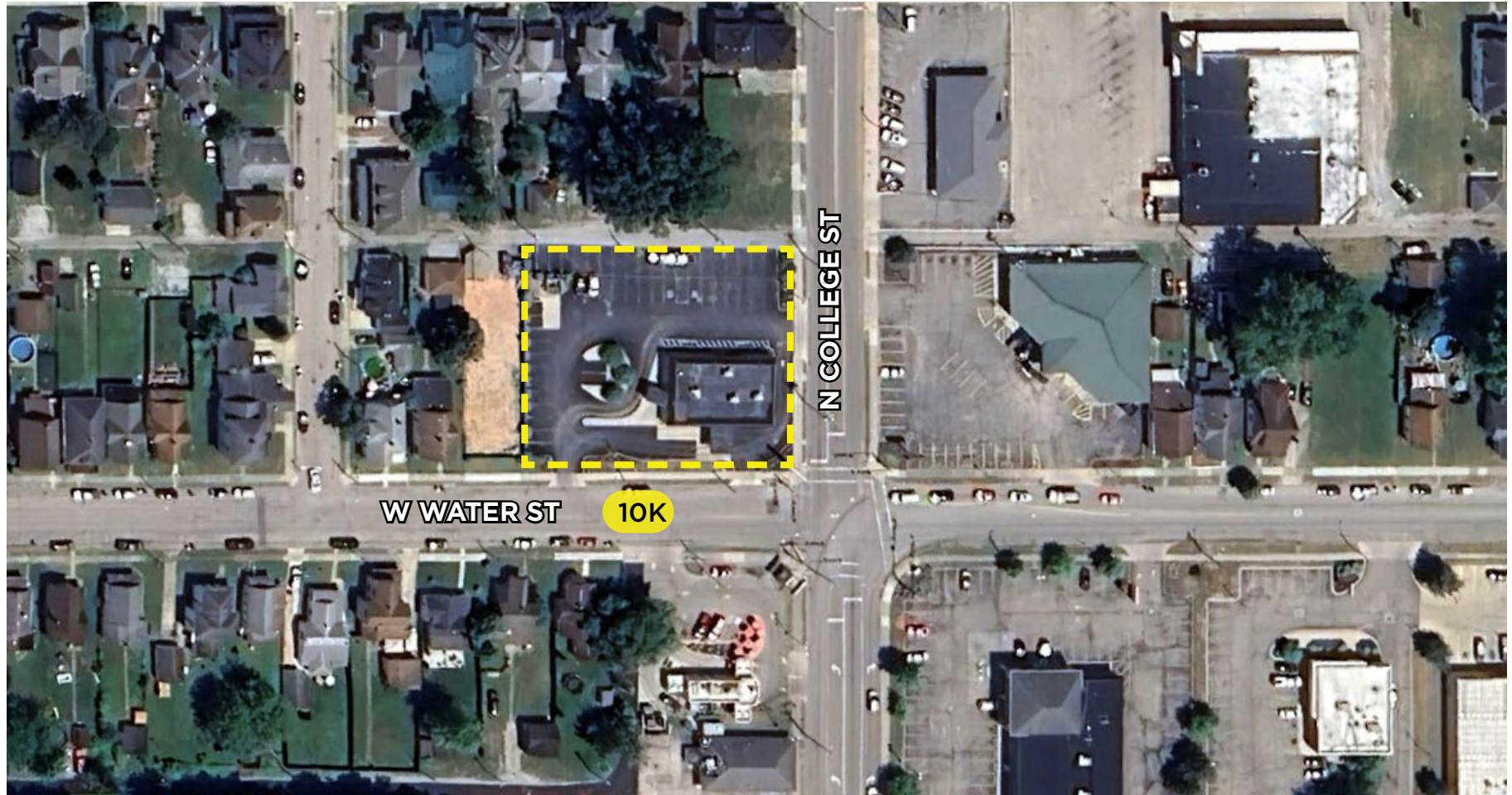


### DAYTIME POPULATION

1 Mile	13,540	\$67,088	5,925
3 Miles	23,250	\$71,693	16,367
5 Miles	26,306	\$74,010	18,739

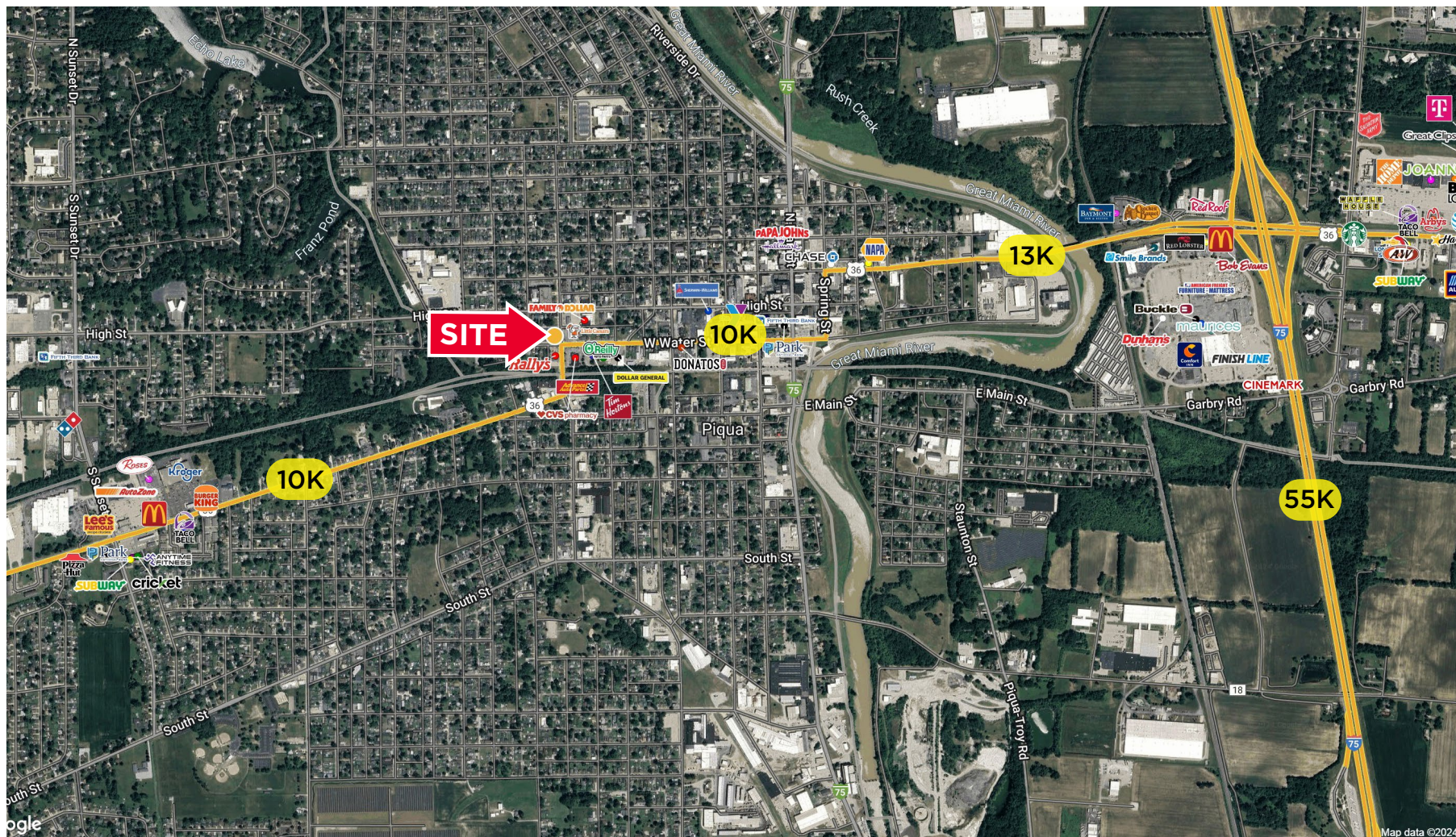








Free-Standing Retail Building / For Sale



**Andrew Sellet** / Managing Director / [andrew.sellet@cushwake.com](mailto:andrew.sellet@cushwake.com) / +1 513 763 3053  
**Clare Holtmeier** / Associate / [clare.holtmeier@cushwake.com](mailto:clare.holtmeier@cushwake.com) / +1 513 322 0748

©2021 Cushman & Wakefield. All rights reserved. The information contained in this communication is strictly confidential. This information has been obtained from sources believed to be reliable but has not been verified. NO WARRANTY OR REPRESENTATION, EXPRESS OR IMPLIED, IS MADE AS TO THE CONDITION OF THE PROPERTY OR PROPERTIES REFERENCED HEREIN OR AS TO THE ACCURACY OR COMPLETENESS OF THE INFORMATION CONTAINED HEREIN, AND SAME IS SUBMITTED SUBJECT TO ERRORS, OMISSIONS, CHANGE OF PRICE, RENTAL OR OTHER CONDITIONS, WITHDRAWAL WITHOUT NOTICE, AND TO ANY SPECIAL LISTING CONDITIONS IMPOSED BY THE PROPERTY OWNER(S). ANY PROJECTIONS, OPINIONS OR ESTIMATES ARE SUBJECT TO UNCERTAINTY AND DO NOT SIGNIFY CURRENT OR FUTURE PROPERTY PERFORMANCE.