

3933 CLAY AVENUE SW
WYOMING, MICHIGAN

INDUSTRIAL FOR SALE
11,086 Square Feet Available



**SIGNATURE
ASSOCIATES**
KNOW SIGNATURE | KNOW RESULTS

WAREHOUSE/DISTRIBUTION



PROPERTY FEATURES

- 11,086 total building square feet available
- Approximately 1,200 square feet of new mezzanine office not included in building square foot
- Located on 1.10 acres
- (5) grade level doors
- 24' ceiling height
- Fully fenced site
- Zoned I-2
- Building features include fire suppression, oil water separator and mechanic pit
- US 131 signage and frontage
- Built in 2022
- Sale Price: \$2,000,000 (\$180.41/sf)



For more information, please contact:

CATHY BOTTEMA
(616) 262 8395
cbottema@signatureassociates.com

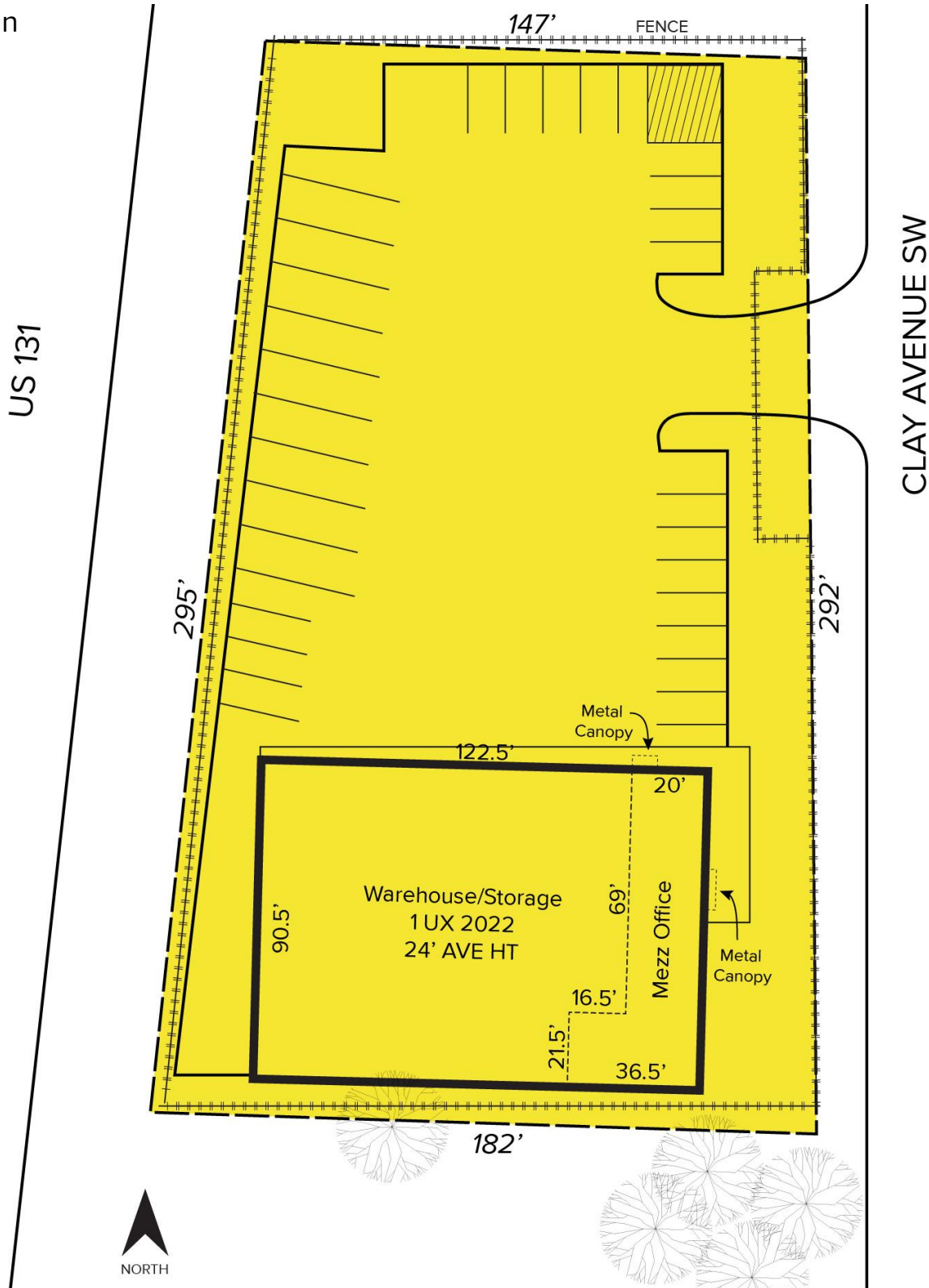
SIGNATURE ASSOCIATES
1188 East Paris Ave SE, Suite 220
Grand Rapids, MI 49546
www.signatureassociateswm.com

3933 Clay Avenue SW – Wyoming, Michigan

Industrial for Sale

11,086
Square Feet
AVAILABLE

Site Plan



Lot dimensions are approximate

For more information, please contact:

CATHY BOTTEMA
(616) 262 8395
cbottema@signatureassociates.com

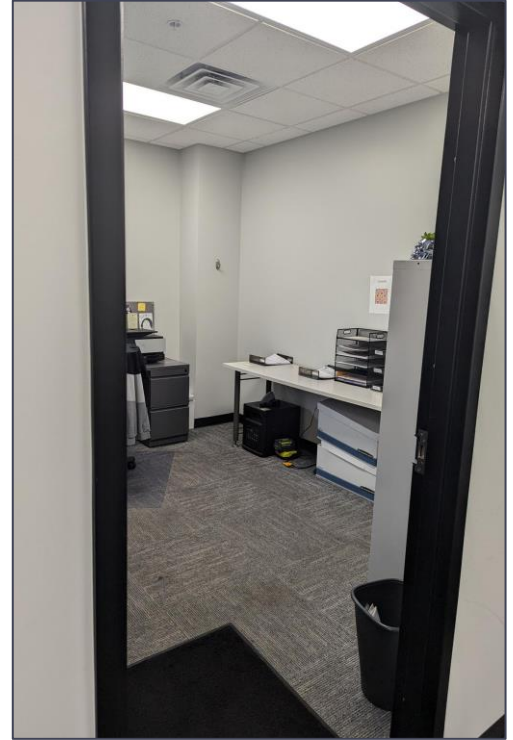
SIGNATURE ASSOCIATES
1188 East Paris Ave SE, Suite 220
Grand Rapids, MI 49546
www.signatureassociateswm.com

3933 Clay Avenue SW – Wyoming, Michigan

Industrial for Sale

11,086
Square Feet
AVAILABLE

Interior Photos



For more information, please contact:

CATHY BOTTEMA
(616) 262 8395
cbottema@signatureassociates.com

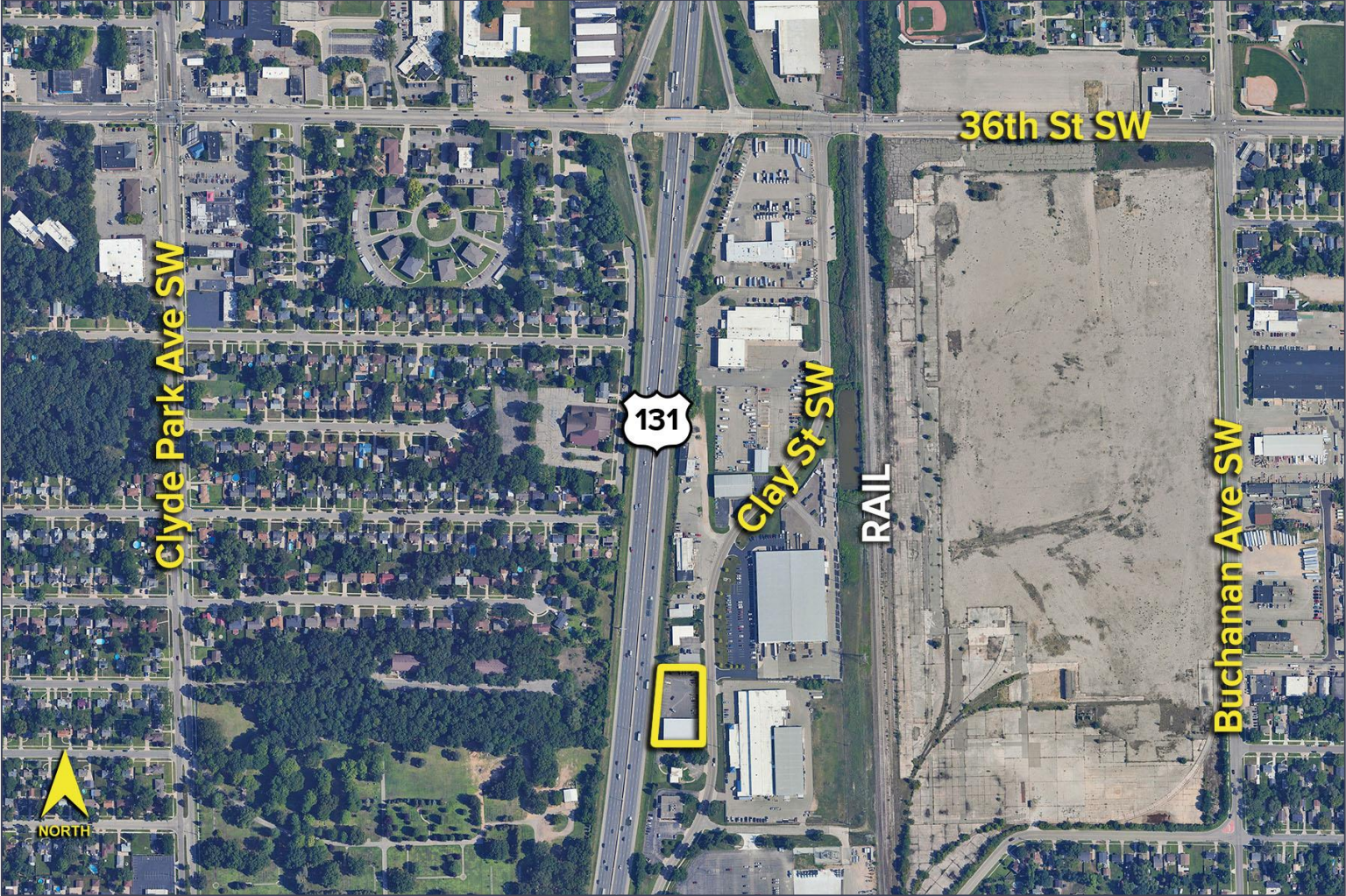
SIGNATURE ASSOCIATES
1188 East Paris Ave SE, Suite 220
Grand Rapids, MI 49546
www.signatureassociateswm.com

3933 Clay Avenue SW – Wyoming, Michigan

Industrial for Sale

11,086
Square Feet
AVAILABLE

Aerial



For more information, please contact:

CATHY BOTTEMA
(616) 262 8395
cbottema@signatureassociates.com

SIGNATURE ASSOCIATES
1188 East Paris Ave SE, Suite 220
Grand Rapids, MI 49546
www.signatureassociateswm.com

Information is subject to verification and no liability for errors or omissions is assumed. Price is subject to change and listing withdrawal.