

For Lease - Office & Warehouse

3415 Stone Way N, Seattle, WA 98103

Fremont



Rare, free standing office & warehouse building in a great location on Stone Way North in Fremont. 20 foot high ceiling in warehouse with dock high loading. Two story office with break room and off site parking. Available Spring 2023. Call broker for details.

| | | | | | |
|------------|-------------------|--------|---------------------------------|-------------------|-------------|
| Available: | 9,800 sf | NNN's: | 2022 estimated at \$6.10 per sf | Sprinkered: | Yes |
| Office | 1,200 - 2,800 sf | Heat: | Gas Reznor | Off site parking: | Yes |
| Warehouse | 6,800 - 8,600 sf, | Power: | 600 amp / 3 Phase | Loading: | 2 dock bays |

contact:
Brian Fairchild
brian@commercialspace.com

Commercial Space Advisors, LLC
3525 Stone Way N. Suite C11
Seattle, WA 98103
www.commercialspace.com

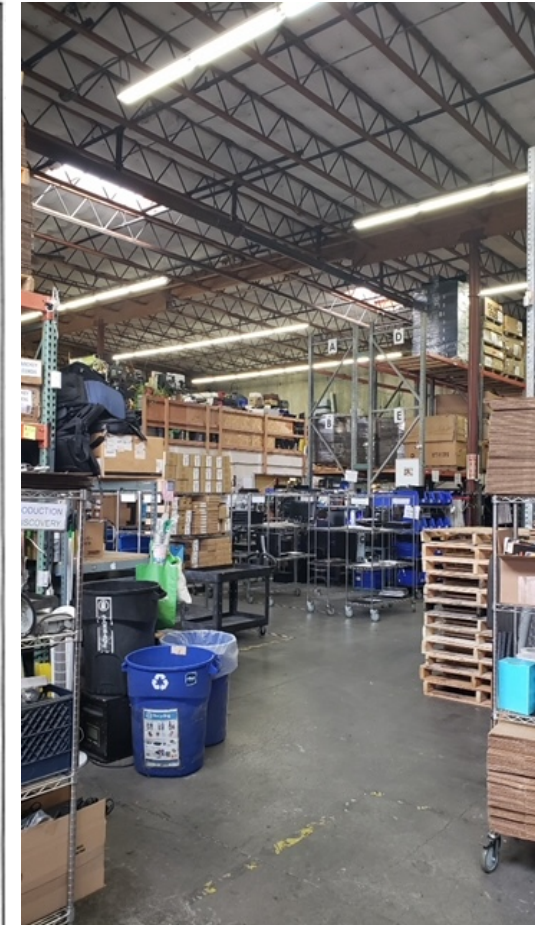
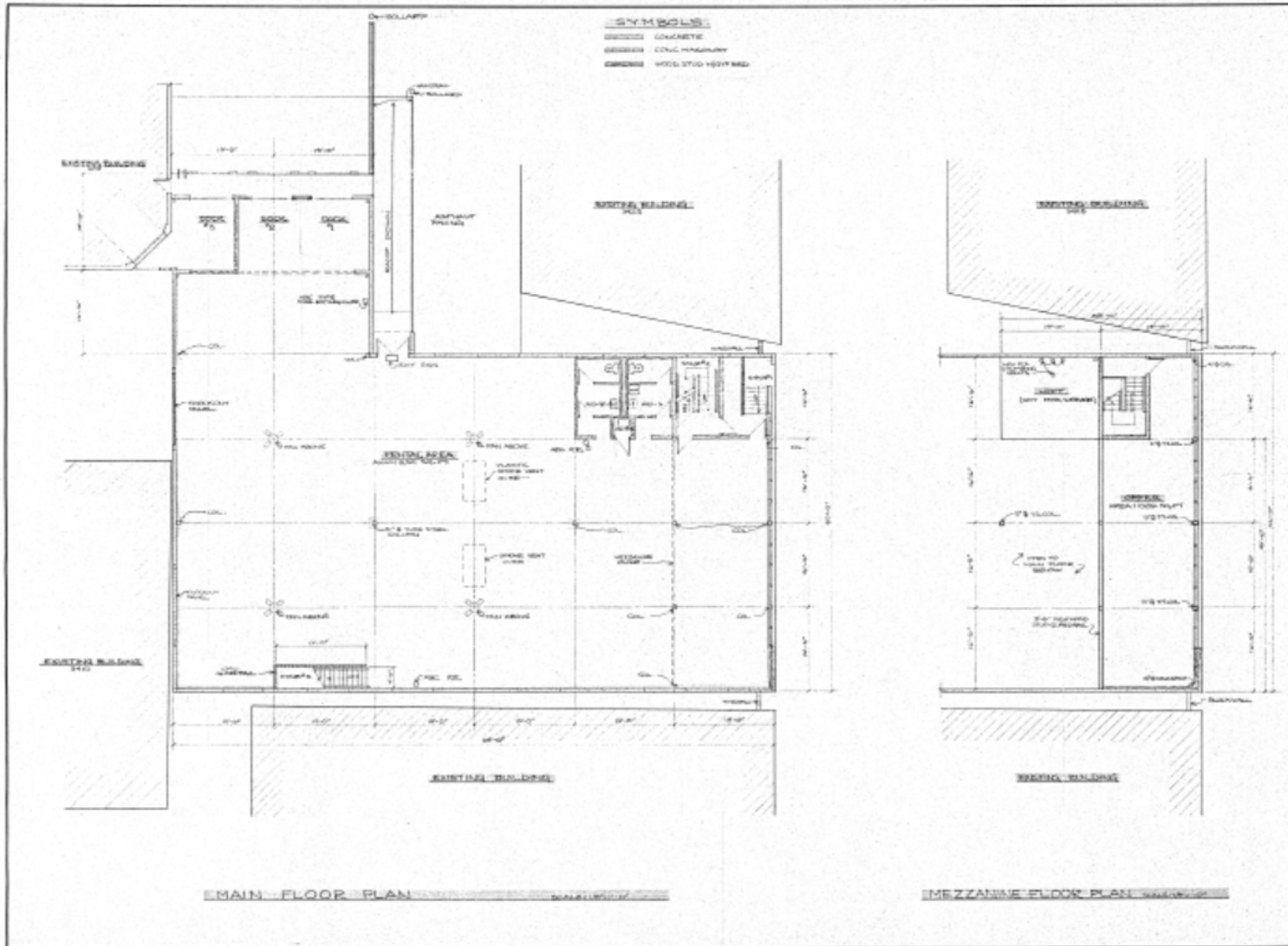
206 789-1100

This information has been secured from sources we believe to be reliable, but we make no representations or warranties, expressed or implied, as to the accuracy of the information. References to square footage or age are approximate. Buyer / tenant must verify the information and bears all risk for any inaccuracies.

For Lease - Office & Warehouse

3415 Stone Way N, Seattle, WA 98103

Fremont



contact:

Brian Fairchild

206 850-1100

brian@commercialspace.com

Commercial Space Advisors, LLC
3525 Stone Way N. Suite C11
Seattle, WA 98103
www.commercialspace.com

206 789-1100

This information has been secured from sources we believe to be reliable, but we make no representations or warranties, expressed or implied, as to the accuracy of the information. References to square footage or age are approximate. Buyer / tenant must verify the information and bears all risk for any inaccuracies.