



Component Structure	
Occ. Code	603
Occ. Descr.	Metal Warehouse - Post Frame
Year Built	2005
EFF Age/Yr	19/ 2005
Condition	NML
Description	BLDG 1
Perimeter	328
Base	6,240
Basement	0
GBA	7440

Verticals					
Ftg & Fdtn					
Exterior wall	vlt/ Frm/ Insul (51'-79' Wide)	15	Metal/ Frame (51'-79' Wide)	15	
Interior wall	Wood Liner	15	Unfinished	15	
Pilasters					
Wall facing					
Windows	Incl. w/ Base	1			
Fronts/Doors	Incl. w/ Base				

Horizontals					
Basement					
Roof	Metal/ Frame (51'-79' Wide)	Yes	tal/ Frm/ Insul (51'-79' Wide)	Yes	
Ceiling	Metal Liner	1			
Struct. Floor	Concrete- Reinforced	1			
Floor Cover					
Partitions					
Framing	Pole Construction	1			
HVAC	In-Floor Heat (Simple)	1	No HVAC	1	
Electrical	Warehouse	1			
Sprinkler					

Plumbing		
	B	Ext
Rough Plumbing		1
Hot Water Tank		1
Toilet Room		1
Stall Shower -Prefab		1
Sink-Service (Fiberglass)		1

Adjustments		
Office-internal with He	880	Low
Mezzanine - open stor	264	AVG
Mezzanine - open stor	880	AVG

Bldg / Addn	Description	Units	Year
1 of 2	O 603 —Metal Warehouse - Post Frame		
Com	P 603 —Metal Warehouse - Post Frame	6,240	
V	Exterior Wall		
	Mtl/ Frm/ Insul (51'-79' Wide) - 15	158	
	Metal/ Frame (51'-79' Wide) - 15	170	
V	Interior Wall		
	Wood Liner - 15	84	
	Unfinished - 15	244	
V	Windows		
	Incl. w/ Base - 1	328	
V	Fronts/Doors		
	Incl. w/ Base	328	
H	Roof		
	Metal/ Frame (51'-79' Wide) - Yes	3,840	
	Metal/ Frm/ Insul (51'-79' Wide) - Yes	2,400	
H	Ceiling		
	Metal Liner - 1	1,736	
H	Struct. Floor		
	Concrete- Reinforced - 1	6,240	
H	Framing		
	Pole Construction - 1	1	
H	HVAC		
	In-Floor Heat (Simple) - 1	2,400	
	No HVAC - 1	3,840	
H	Electrical		
	Warehouse - 1	6,240	
Plmb	Rough Plumbing - AVG	1	
Plmb	Hot Water Tank - AVG	1	
Plmb	Toilet Room - AVG	1	
Plmb	Stall Shower -Prefab - AVG	1	
Plmb	Sink-Service (Fiberglass) - AVG	1	
Adj	Office-internal with Heat & A/C - Low	880	
Adj	Mezzanine - open storage/Whse/wd - A\	264	
Adj	Mezzanine - open storage/Whse/wd - A\	880	
Ex	Door	3	2005
	O.H. - Door - Power, 12 Ft Wide, 12 Ft High		

Precomputed Addition	
Occ. Code	604
Occ. Descr.	Metal Office
Year Built	2005
EFF Age/Yr	19/ 2005
Condition	NML
Description	ADDN 1
Style	Metal - Post
Width	30
Base	1,200
Basement	0
Decorative Front	No
GBA	7440

Verticals			
Ftg & Fdtn			
Exterior wall	Metal/ Frm/ Insul (<50' Wide)	9	
Interior wall	Drywall or Equiv.	9	
Pilasters			
Wall facing			
Windows	Incl. w/ Base	1	
Fronts/Doors	Incl. w/ Base		

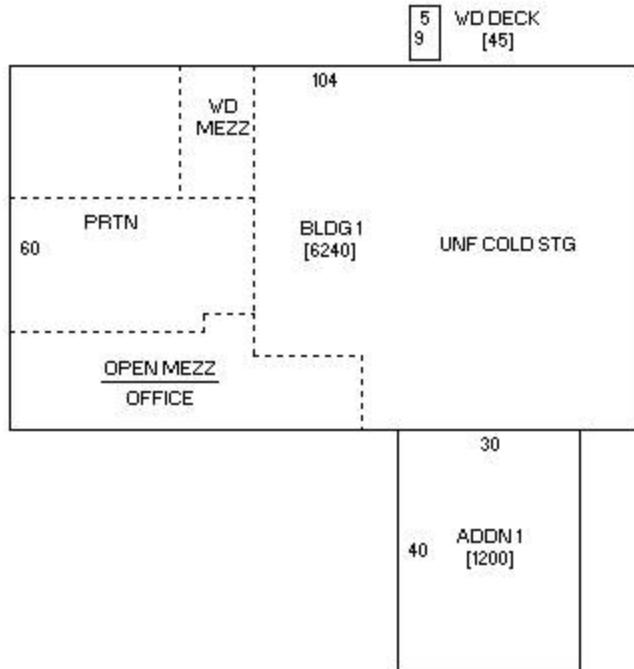
Horizontals			
Basement			
Roof	Mtl/ Frm/ Insul.	Yes	
Ceiling	Drywall	1	
Struct. Floor	Concrete- Reinforced	1	
Floor Cover	Vinyl Sheet	1	
Partitions	Office	1	
Framing	Post Frame Construction	1	
HVAC	Combination FHA - AC	1	
Electrical	Office	1	
Sprinkler			

Plumbing		
	B	Ext
Toilet Room	1	
Sink-Kitchen	1	

Adjustments		



		Description	Units	Cond	Year							
Yrd	I	1 — Fencing - Chain No Barbs, 6 Ft-hgh, 650 LF, 0 LF-Gates, No Sec. Gate		NML	2005							
Yrd	I	1 — WD DK W5.00 x L9.00 45 SF, Wood Deck, Avg Pricing		NML	2005							



Sketch 1 of 1

**Notes:**

Note Title: VAI 2022

VAI (KRA) 08/03/2022 -

BLDG 1- MTL WHSE FOR JMSA TRUCKING. THE NORTH 60X64 IS UNF COLD STG. THE SOUTH HAS TWO STG BAYS THAT HAVE OSB LINED WALLS, MTL CEILING, IN-FLOOR HEAT. THE WEST BAY HAS A 12X22 OPEN WD STG MEZZ. FINISHED AREA IS AN OFFICE WITH CONC FLOOR, DRWL WALLS AND CEILING. OPEN WD MEZZ ABOVE OFFICE AREA.

ADDN 1- MTL OFFICE WITH AVG QUALITY ORG FINISH.

-----  
ADD FV SHED BACK ON PER INSPECTION 7/20/94 (NOT SURE OF TRUE AGE) - REMOVED IN ERROR IN 1992/93 WHEN 2 HOUSES WERE DEMOLISHED. USED TO BE A MOBILE HOME PARK - MH'S ARE NOW ALL GONE.

PERMIT I-8-05 NEW SHOP/OFFICE COMP 7/19/05 - ASSESSED FOR 165 DAYS OF 2005.