

Somers, NY

MEDICAL/OFFICE/SPA FOR LEASE

339 Route 202

Wrights Court



AVAILABLE:

2,825 SF Freestanding 2-Story Building

- 1,704 SF 1st Floor
- 1,121 SF 2nd Floor

CO-TENANTS:

ProActive Physical Therapy, Koral Wellness and Law Office

NEIGHBORING RETAILERS:

DeCicco's Family Markets, CVS, Chase Bank, Raymond James, The UPS Store, Webster Bank, Dunkin'/Baskin Robbins, Burke Rehab, White Plains Hospital, Raymond Opticians, USPS, Verizon, Citibank, Anytime Fitness, and many more

ADDITIONAL INFORMATION:

- 8,085 SF GLA – New Mixed-Use 3 Building Development
- Located in Somers' Historical District
- Within Close Proximity to Multiple National Retailers, Local Schools, and Town Offices
- Central HVAC
- 55 Parking Spaces

RENT:

Call for Details

TAXES:

\$12.00/SF

AREA DEMOGRAPHICS

	3 Miles	5 Miles	10 Miles
Population	19,655	46,102	192,806
Avg. HH Income	\$161,388	\$162,224	\$156,654

**For More Information,
Please Contact:**

914-237-3400

Scott Meshil – Ext. 106
Scott@RoyalPropertiesInc.com

Mario Fernandes – Ext. 113
Mario@RoyalPropertiesInc.com



ROYAL

PROPERTIES

www.RoyalPropertiesInc.com

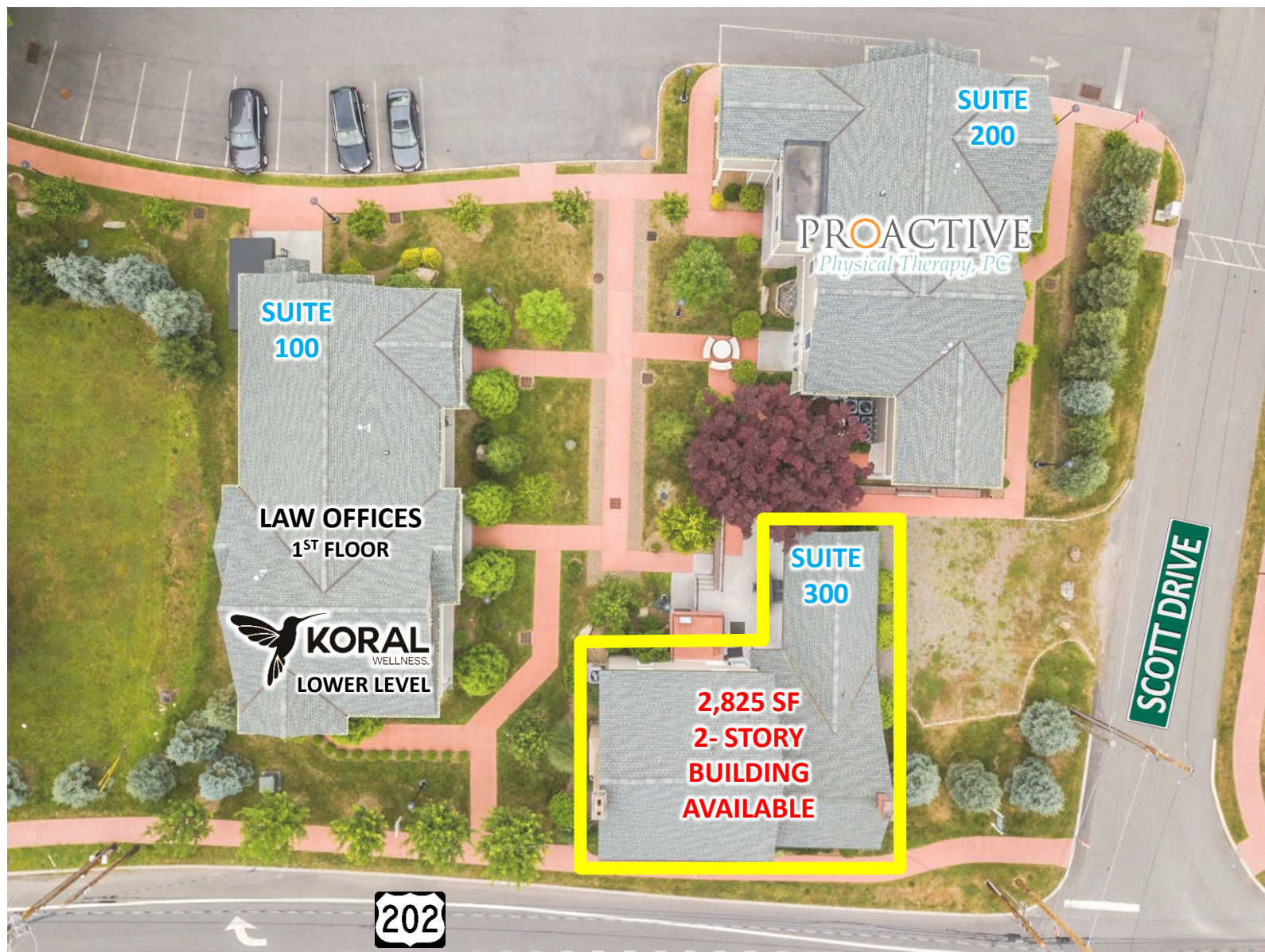
All information furnished herein is from sources deemed reliable. No warranty or representation is made to the accuracy thereof and it is submitted subject to errors, omissions and/or changes without notice.

Somers, NY

MEDICAL/OFFICE/SPA FOR LEASE

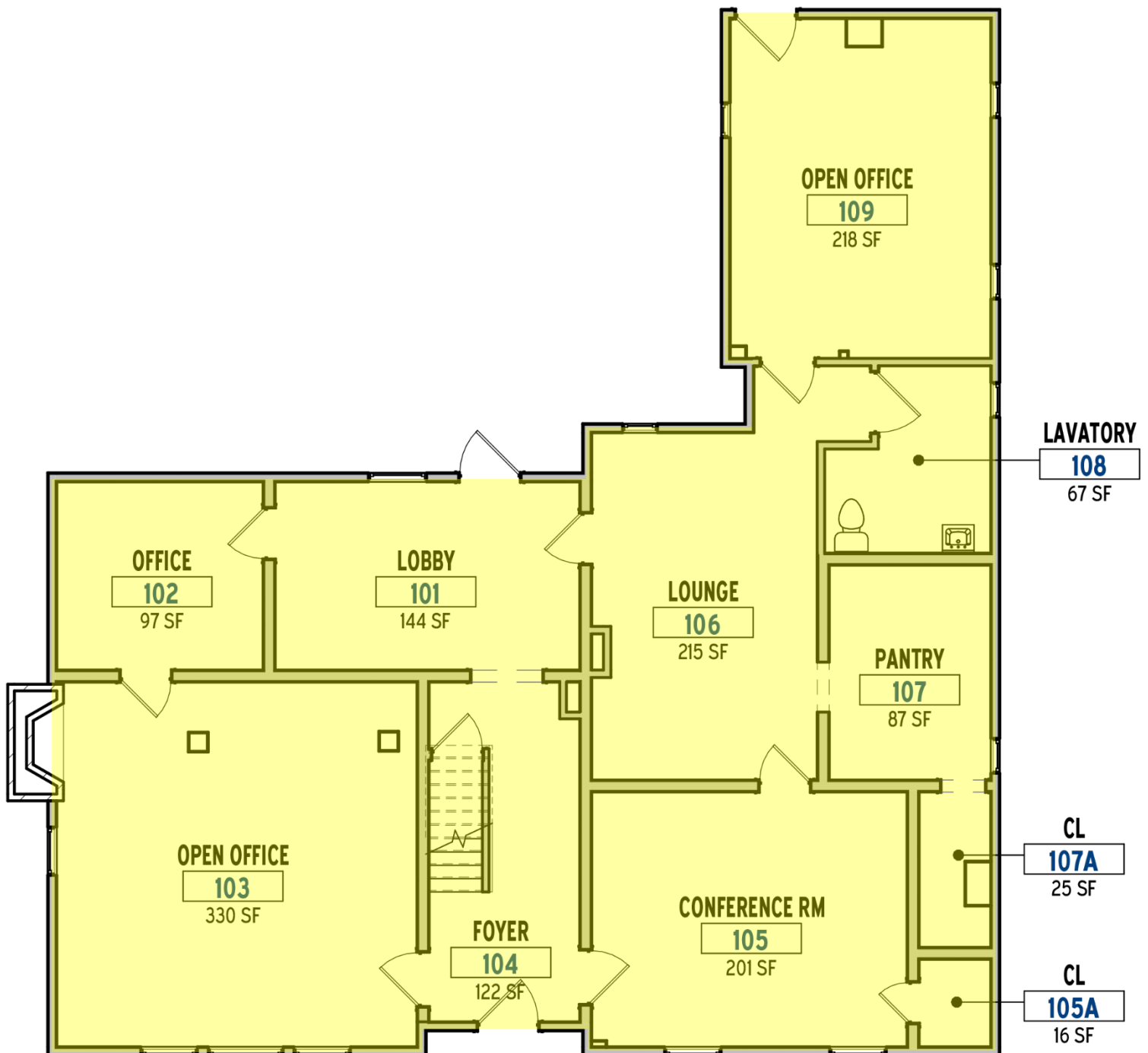
339 Route 202

Wrights Court



SUITE	TENANT	SQ. FT.
100-1 ST FL	LAW OFFICES	1,850
100-LL	KORAL WELLNESS	1,450
200	PROACTIVE PT	1,960
300	AVAILABLE	2,825



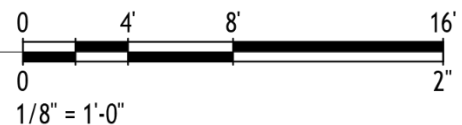


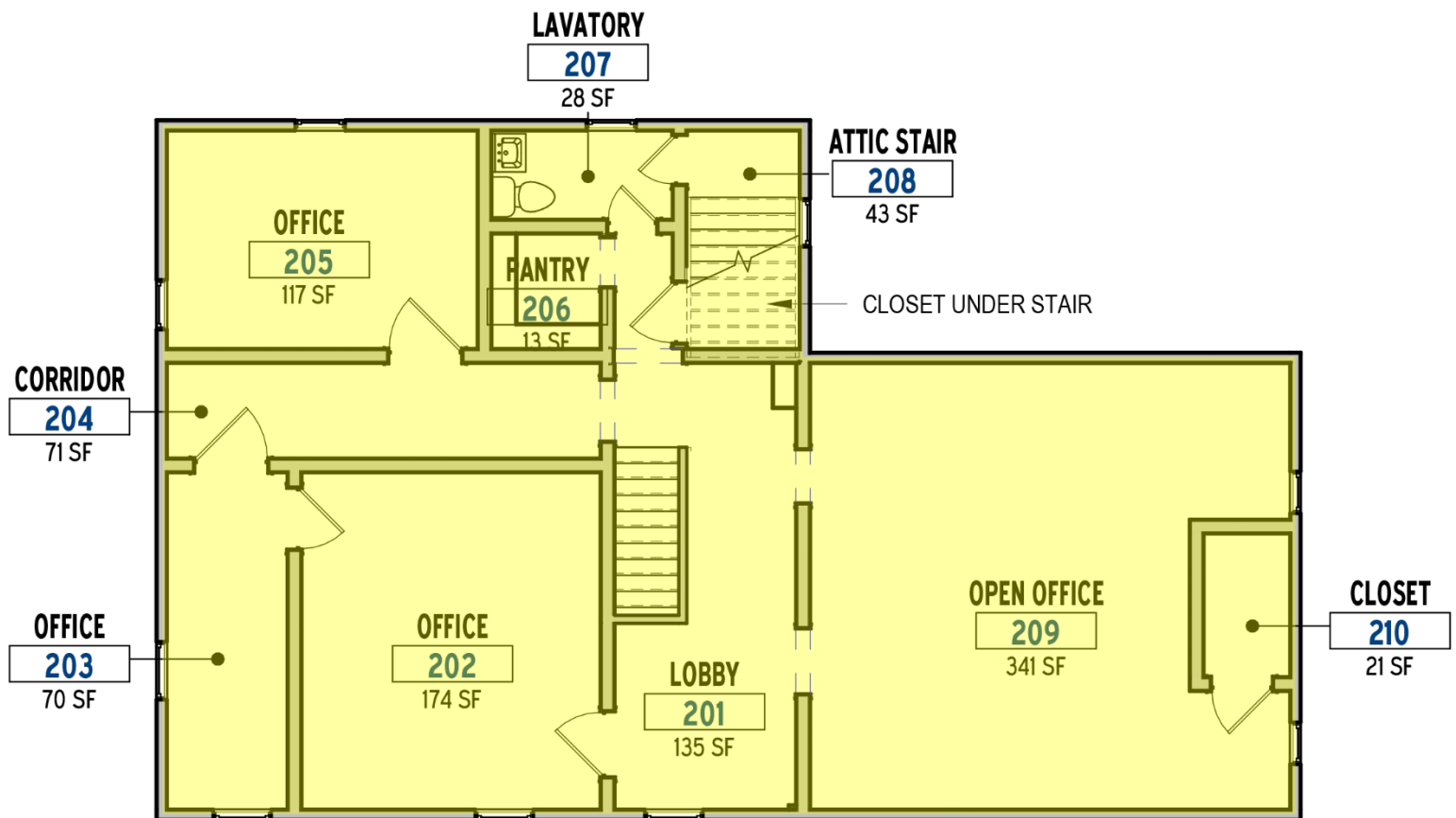
1

FIRST FLOOR PLAN

1/8" = 1'-0"

1,704 SF

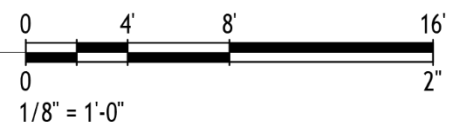




2 SECOND FLOOR PLAN

1/8" = 1'-0"

1,121 SF



Somers, NY

MEDICAL/OFFICE/SPA FOR LEASE

339 Route 202

Wrights Court



Somers, NY

MEDICAL/OFFICE/SPA FOR LEASE

339 Route 202

Wrights Court

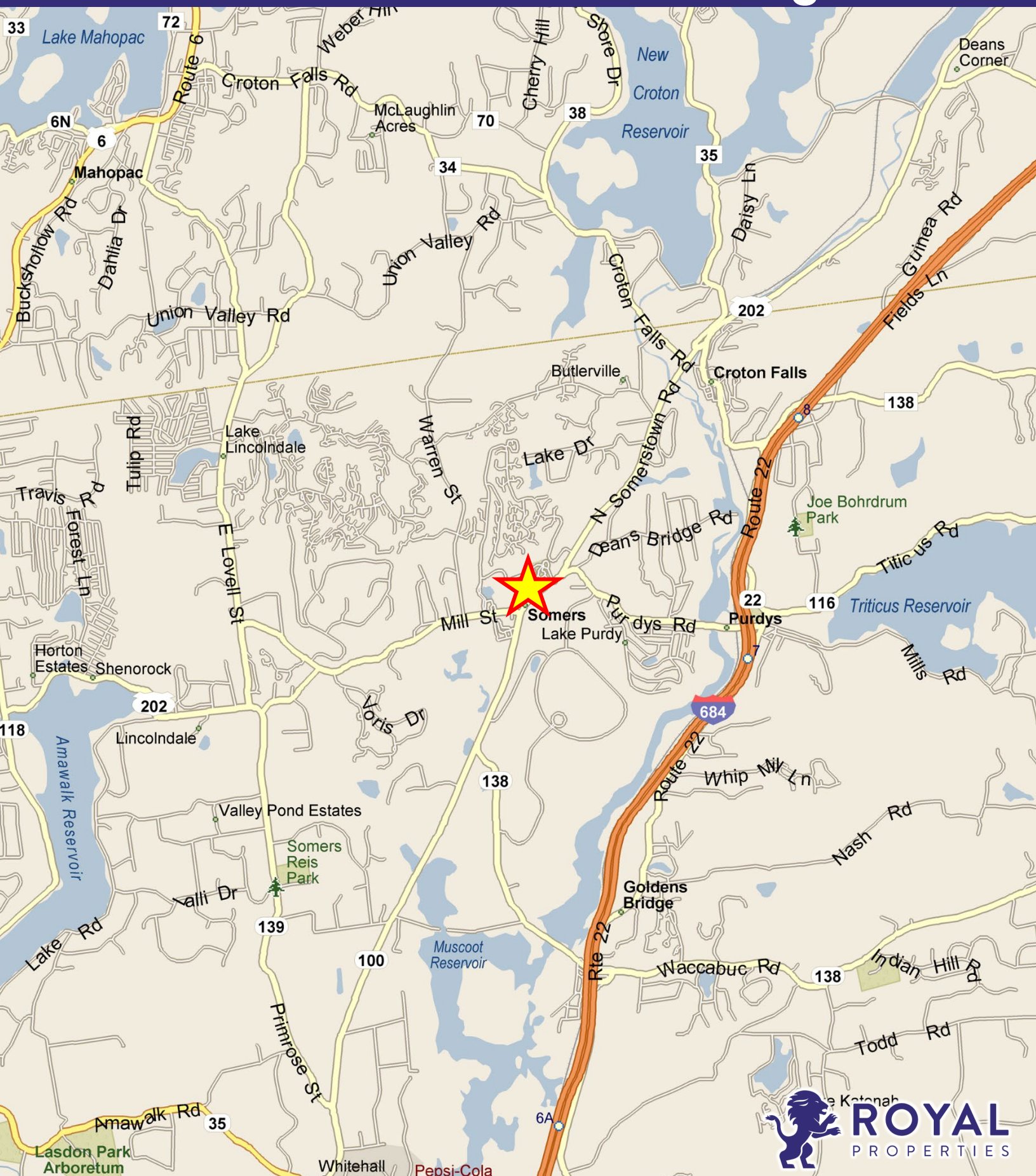


Somers, NY

MEDICAL/OFFICE/SPA FOR LEASE

339 Route 202

Wrights Court



ROYAL
PROPERTIES