

# AVAILABLE SPACES

## Availability:



**SUITE 1A**  
CREATIVE SPACE  
1,250 RSF



**SUITE 1C**  
CREATIVE SPACE  
1,350 RSF



**SUITE 308**  
OFFICE  
950 RSF



**SUITE 301**  
OFFICE  
880 RSF



**SUITE 406-407**  
OFFICE  
1,350 RSF



## BOHACK SQUARE:

Award-winning Bohack Square is the most established retail and office complex on the Brooklyn – Queens border, featuring seemingly endless retail frontage and Class – A offices with a 50-car parking lot on Metropolitan Avenue.

Feel free to contact us to schedule a private tour or for additional information about our availability.

**Email: [info@metrorealtynyc.com](mailto:info@metrorealtynyc.com)**

**Phone: 718-417-3046**

**B** BOHACK  
SQUARE

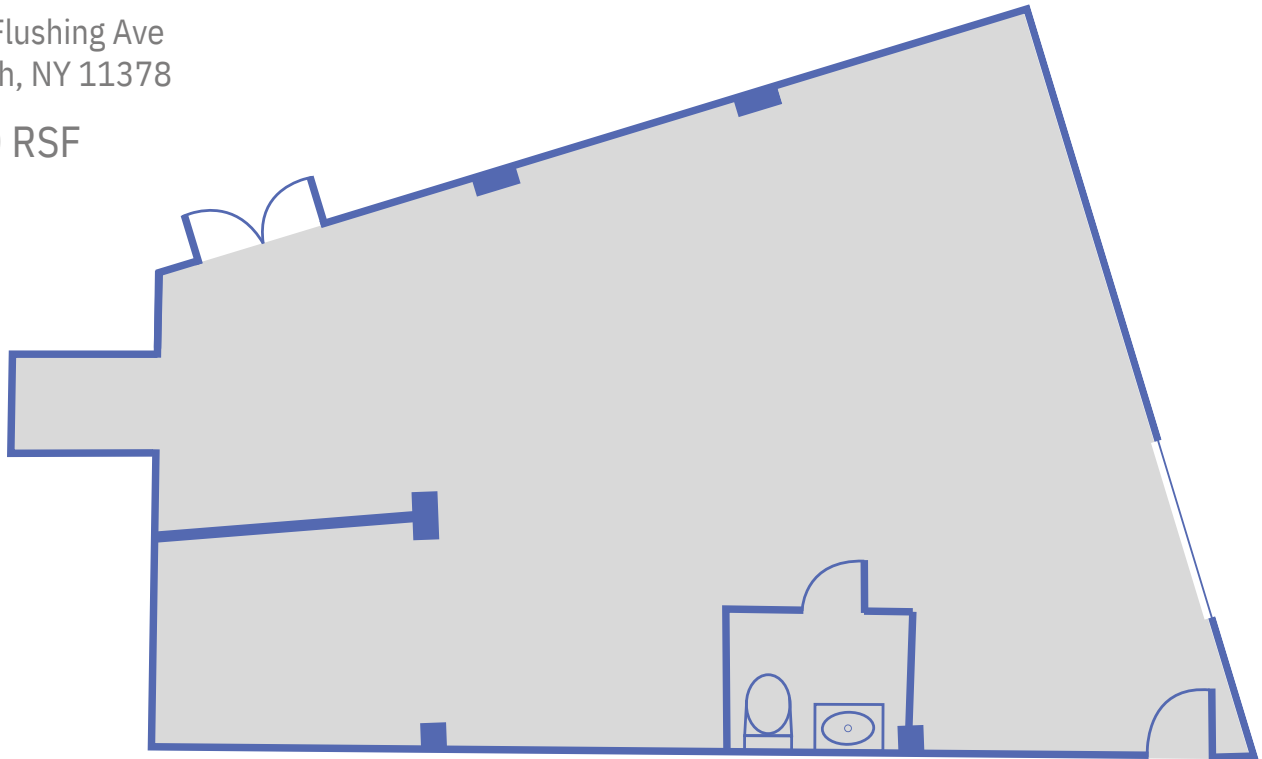




# Suite 1A

51-05 Flushing Ave  
Maspeth, NY 11378

1,250 RSF



**\$3,500 Per Month  
Available Now**

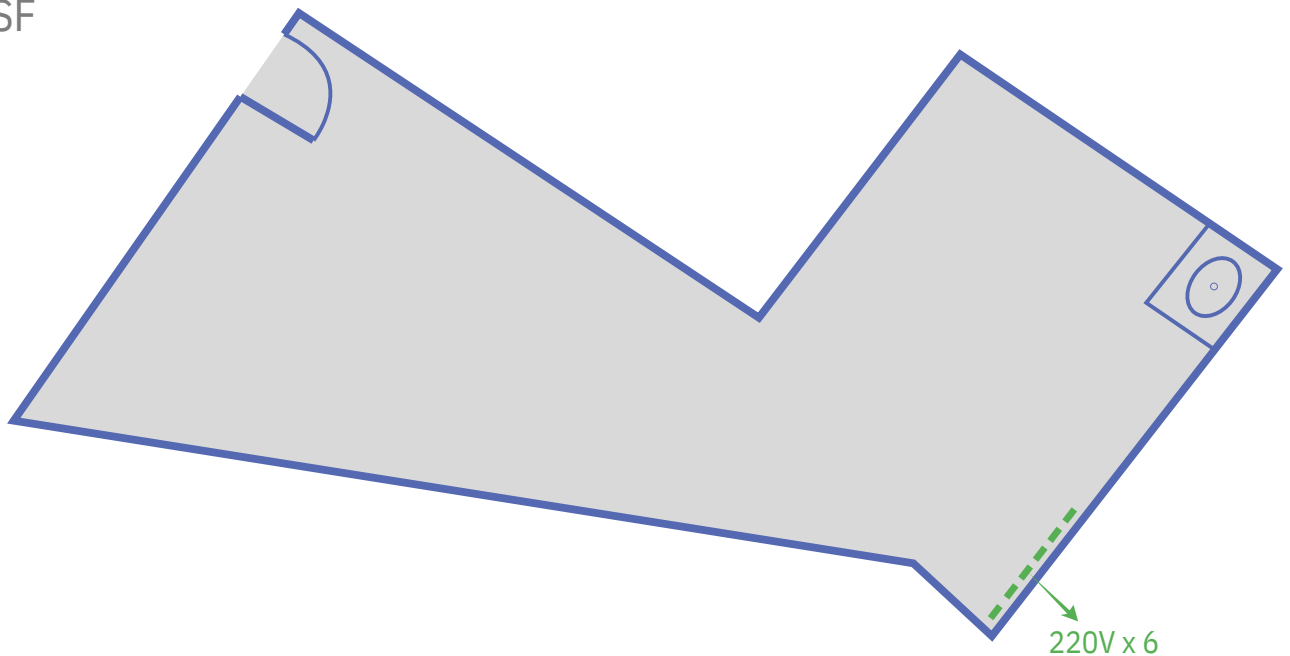




# Suite 1C

51-05 Flushing Ave  
Maspeth, NY 11378

1,350 RSF



**\$3,500 Per Month**  
**Available April 1st, 2024**

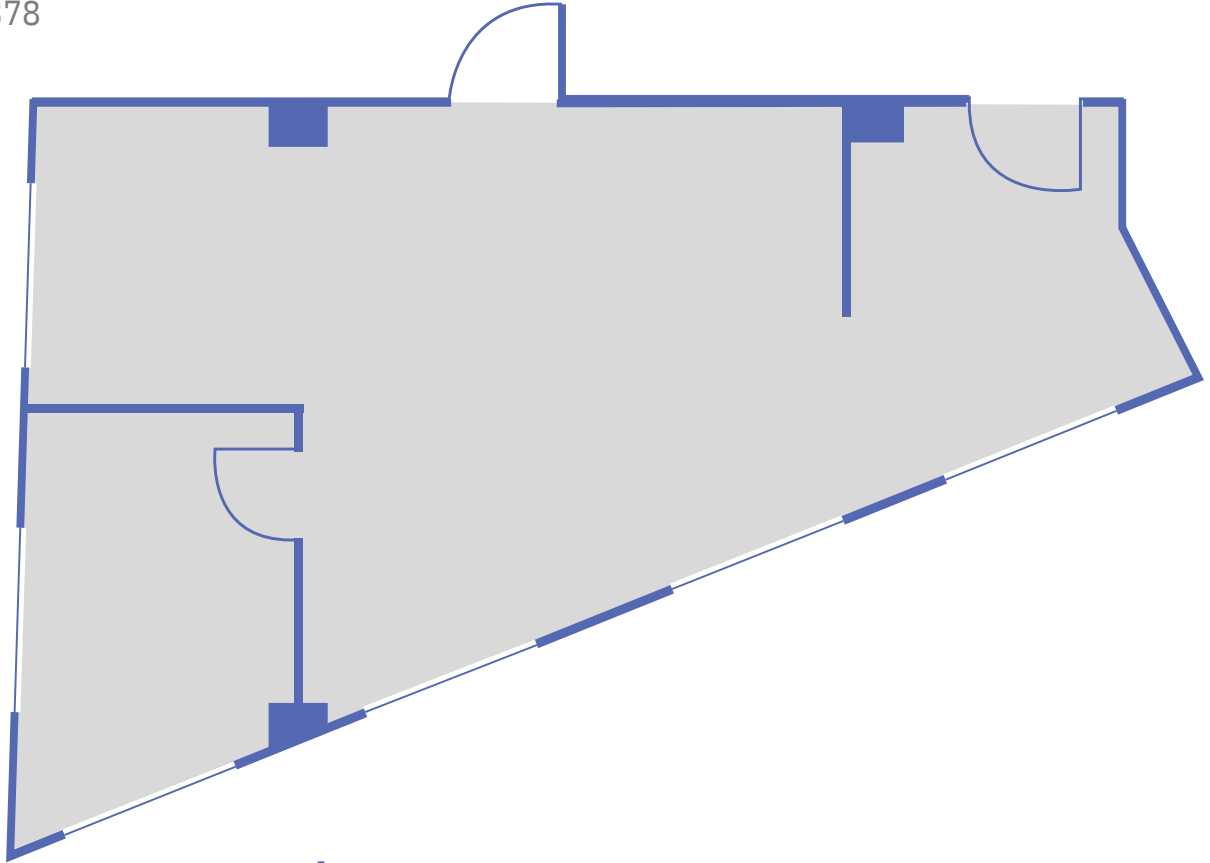




# Suite 308

51-05 Flushing Ave  
Maspeth, NY 11378

950 RSF



**\$3,000 Per Month**  
**Available Now**

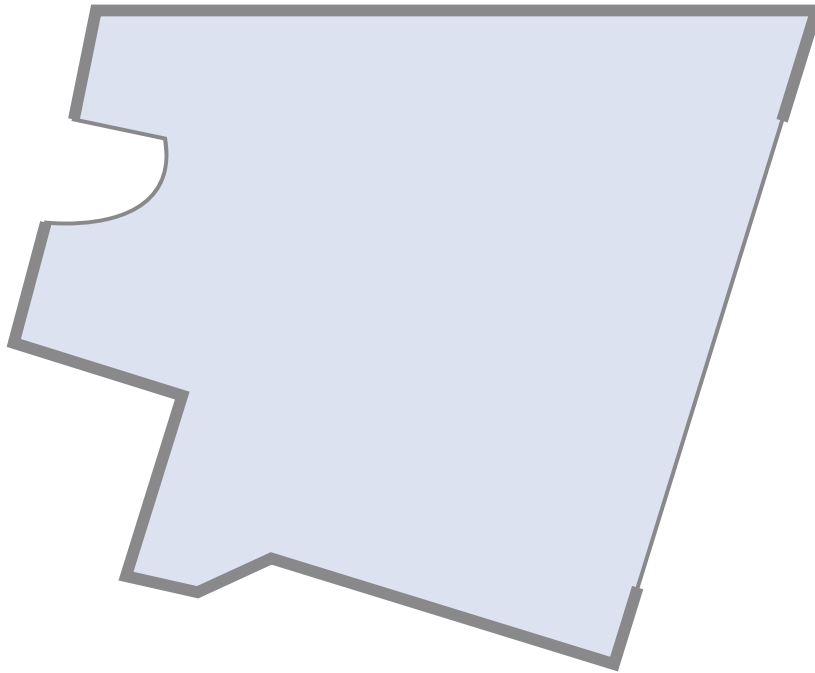




# Suite 301

51-05 Flushing Ave  
Maspeth, NY 11378

880 RSF



**\$3,000 Per Month  
Available Now**

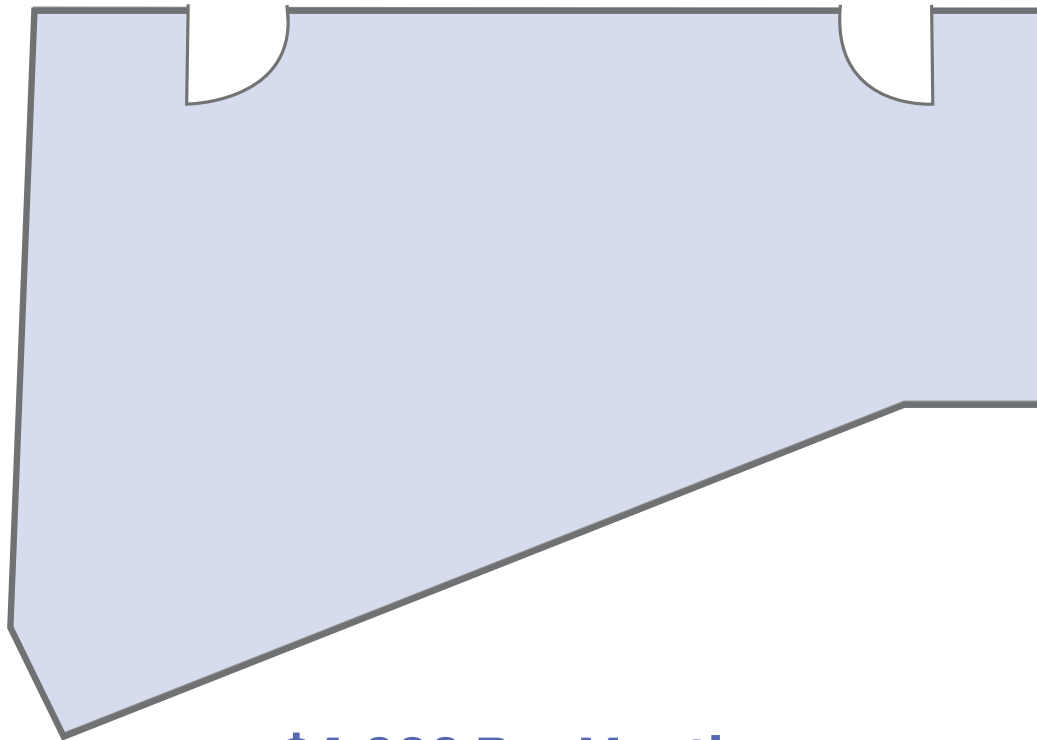




# Suite 406-407

51-05 Flushing Ave  
Maspeth, NY 11378

1,350 RSF



**\$4,000 Per Month  
Available Now**

