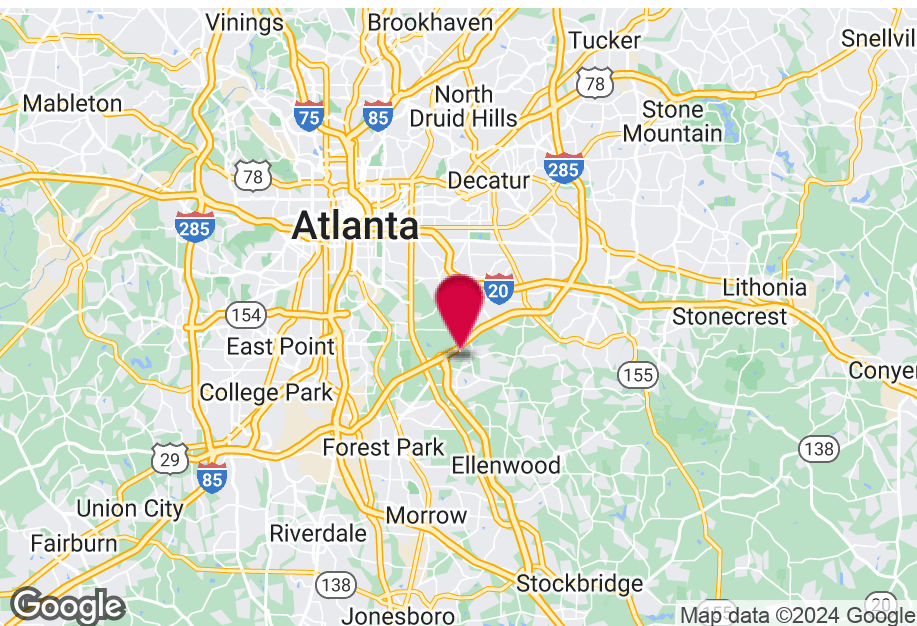
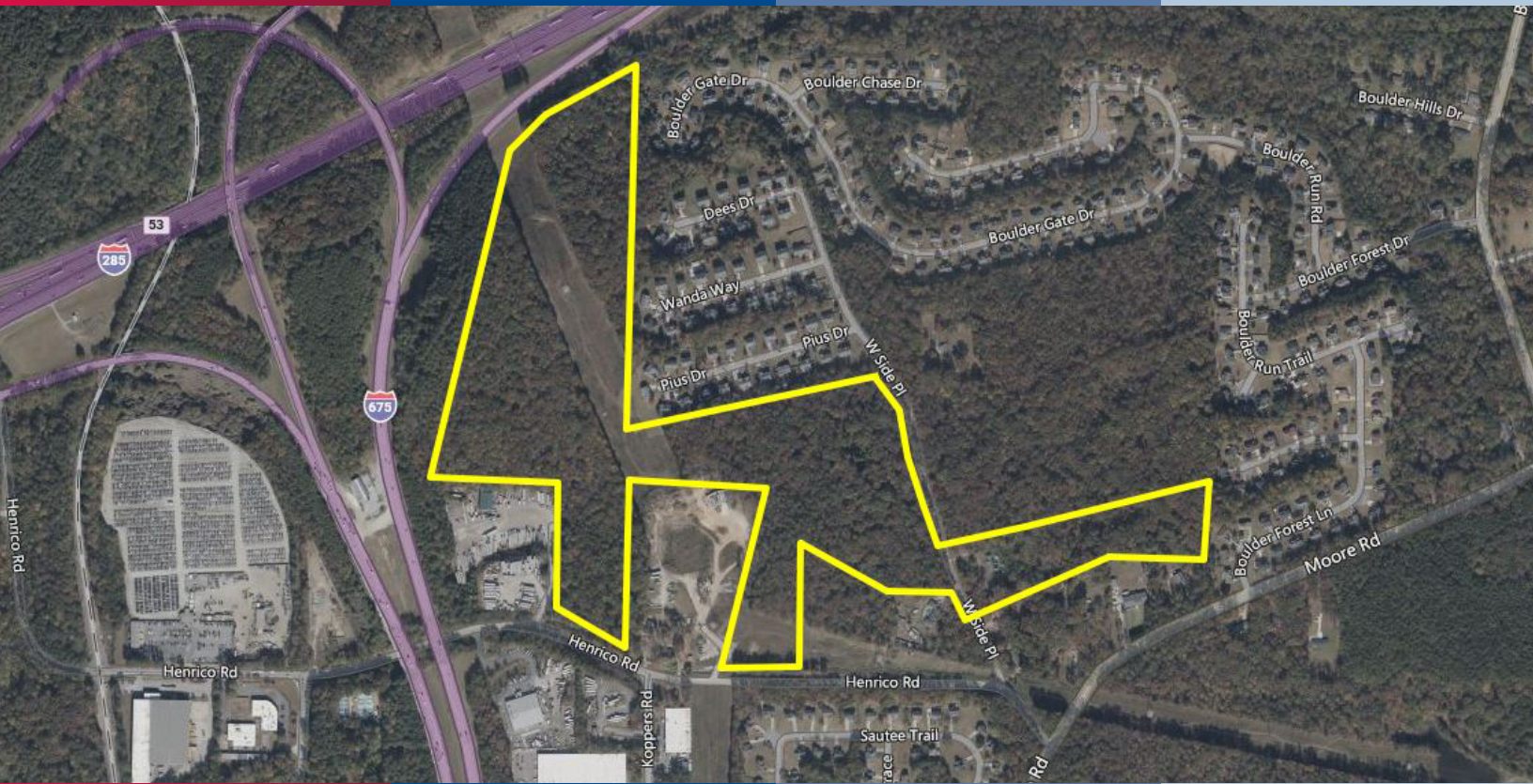


73 +/- ACRES FOR SALE

HENRICO ROAD & WEST SIDE PLACE

Ellenwood, GA 30294



PROPERTY HIGHLIGHTS

- 25.9 +/- Acres Zoned Industrial
- 47.12 +/- Acres Zoned Residential
- Seller Will Sell Subject to Rezoning Approval
- Sewer is Located on West Side Place
- Access Off of Henrico Road and West Side Place
- Less than 1 mile from I-285 at Moreland Avenue
- Frontage on I-675
- Close to Interstate 75 and Hartsfield-Jackson International Airport

Bob Stephens
Vice President
bstephens@kingindustrial.com
404.942.2076

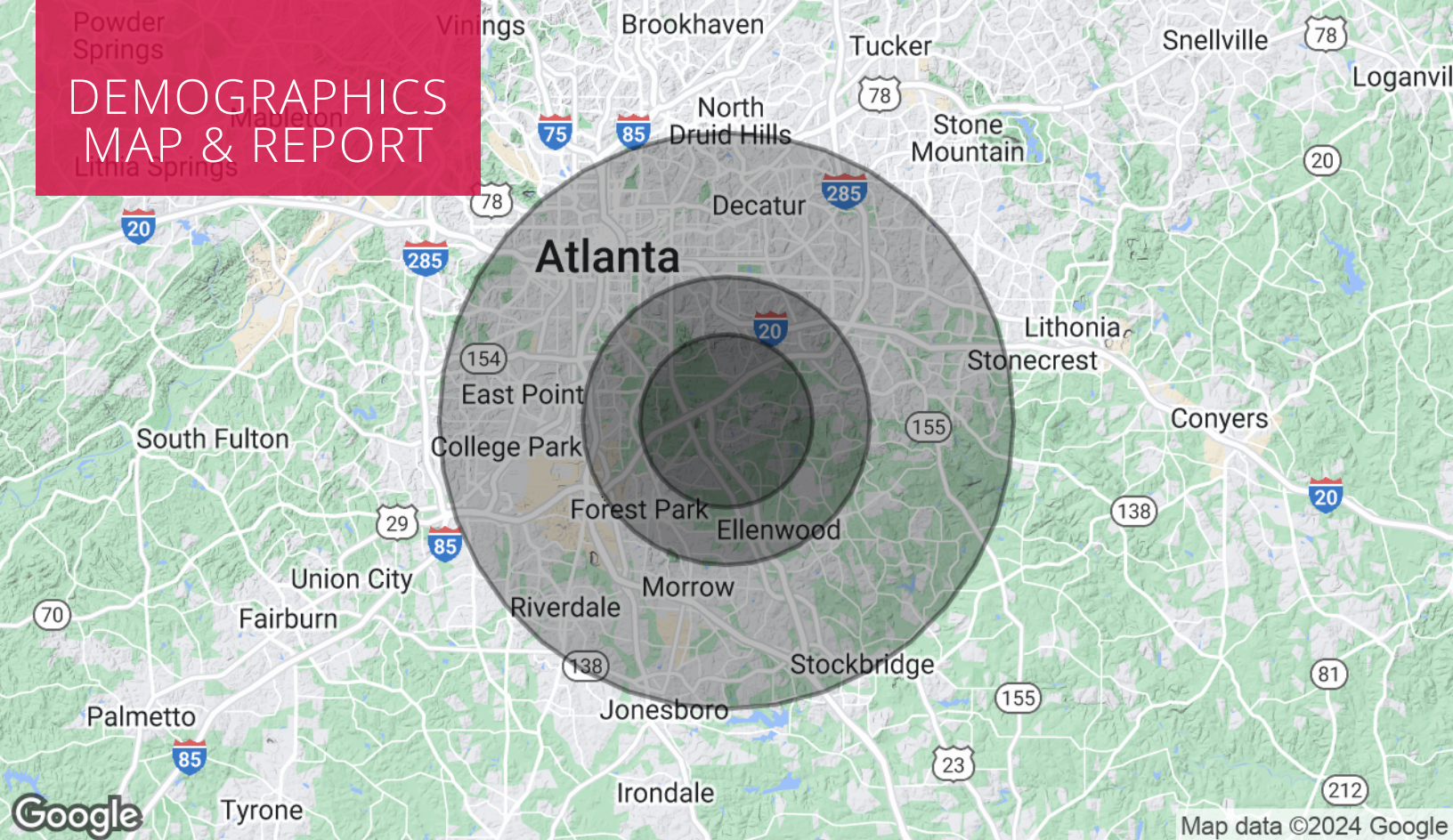
Sim Doughtie, CCIM, SIOR, MCR, SLCR
President
sdoughtie@kingindustrial.com
404.942.2002

King Industrial
Realty, Inc.

CORFAC
INTERNATIONAL

Industrial • Commercial • Investment

DEMOGRAPHICS MAP & REPORT



POPULATION

	3 MILES	5 MILES	10 MILES
Total Population	39,393	156,671	873,896
Average Age	38	38	38
Average Age (Male)	37	37	37
Average Age (Female)	40	40	39

HOUSEHOLDS & INCOME

	3 MILES	5 MILES	10 MILES
Total Households	13,732	57,637	356,575
# of Persons per HH	2.9	2.7	2.5
Average HH Income	\$87,515	\$81,430	\$95,827
Average House Value	\$294,579	\$294,923	\$386,949

Demographics data derived from AlphaMap

Bob Stephens
Vice President
bstephens@kingindustrial.com
404.942.2076

Sim Doughtie, CCIM, SIOR, MCR, SLCR
President
sdoughtie@kingindustrial.com
404.942.2002

King Industrial
Realty, Inc.

CORFAC
INTERNATIONAL

Industrial • Commercial • Investment