

3110 MAIN STREET • Santa Monica, CA 90405

2ND GENERATION RESTAURANT SPACE

FOR LEASE



RAFAEL PADILLA
310.395.2663 x102
RAFAEL@PARCOMMERCIAL.COM
LIC# 00960188

GREG ECKHARDT
310.395.2663 X103
GECKO@PARCOMMERCIAL.COM
LIC# 01255469

3110 Main Street, Santa Monica, CA 90405

SIZE: Approximately 1,871 square feet

RENT: \$5.45 per square foot per month, NNN
(NNN estimated to be \$0.95 per square foot per month)

TERM: 5-10 years

PARKING: 3 levels of on-site parking with parking attendant

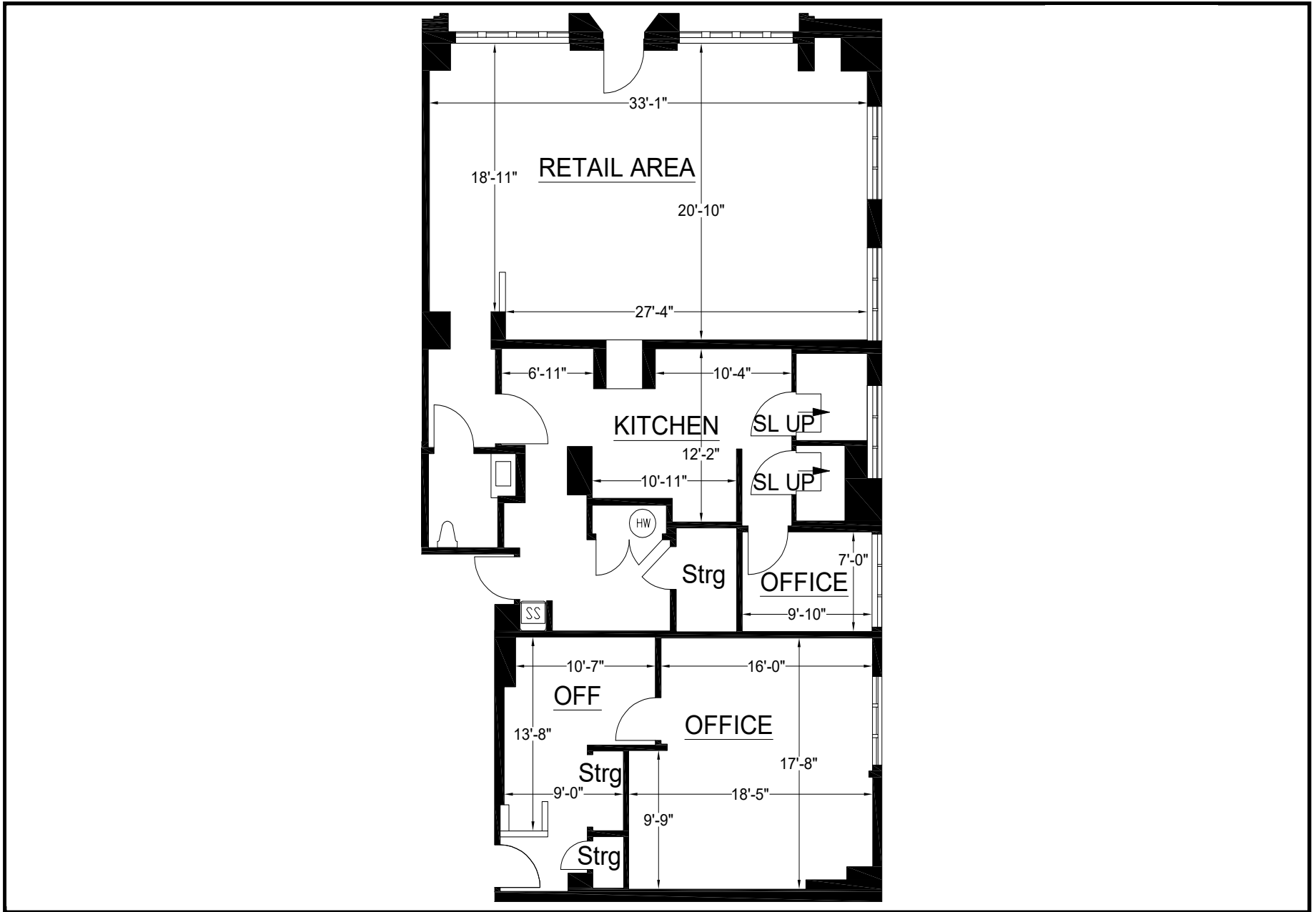
AVAILABLE: Immediately

- **Large front patio**
- **Two blocks from the Beach**
- **On-site 24-hour building security**
- **Heavy foot and auto traffic counts in high income area**
- **Neighbors include Chef Dave Beran, Forma, Pvolve, Shefayoga, Gnarwhal Coffee Co., La Vecchia and many more**



<p>RAFAEL PADILLA 310.395.2663 x102 RAFAEL@PARCOMMERCIAL.COM Lic# 00960188</p>	<p>GREG ECKHARDT 310.395.2663 X103 GECKO@PARCOMMERCIAL.COM LIC# 01255469</p>
---	---

FLOOR PLAN



www.parcommercial.com

RAFAEL PADILLA
310.395.2663 x102
RAFAEL@PARCOMMERCIAL.COM
Lic# 00960188

GREG ECKHARDT
310.395.2663 X103
GECKO@PARCOMMERCIAL.COM
LIC# 01255469

All information furnished is from sources deemed reliable and which we believe to be correct, but no representation or guarantee is given as to its accuracy and is subject to errors and omissions. All measurements are approximate and have not been verified by Broker. You are advised to conduct an independent investigation to verify all information.

MAIN STREET

South of the 10, South of Ocean Park Boulevard and west of Lincoln lies Main Street. Like the tides of the Pacific just a few blocks away, Main Street is characterized by a slow shift in personalities: By day, it's a favorite of up-at-dawn locals, who come for breakfast or coffee after a sunrise surf session or to patronize the eclectic collection of businesses with their dogs and children in tow. Laid-back patio-lined cafés and indie boutiques can easily fill an afternoon for almost any visitor. In the evening, trendy restaurants and watering holes glow with a lively mix of options for nightlife lovers.



www.parcommercial.com

RAFAEL PADILLA
310.395.2663 x102
RAFAEL@PARCOMMERCIAL.COM
Lic# 00960188

GREG ECKHARDT
310.395.2663 X103
GECKO@PARCOMMERCIAL.COM
LIC# 01255469

All information furnished is from sources deemed reliable and which we believe to be correct, but no representation or guarantee is given as to its accuracy and is subject to errors and omissions. All measurements are approximate and have not been verified by Broker. You are advised to conduct an independent investigation to verify all information.