

801 Warrenville Road  
Suite 301  
801 Warrenville Road  
Lisle, IL 60532

# HAMILTON PARTNERS

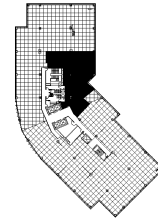
www.hamiltonpartners.com



## SUITE FEATURES

- Elevator Lobby identity and reception with wood flooring
- Space has been whiteboxed
- Great natural light
- Eastern views

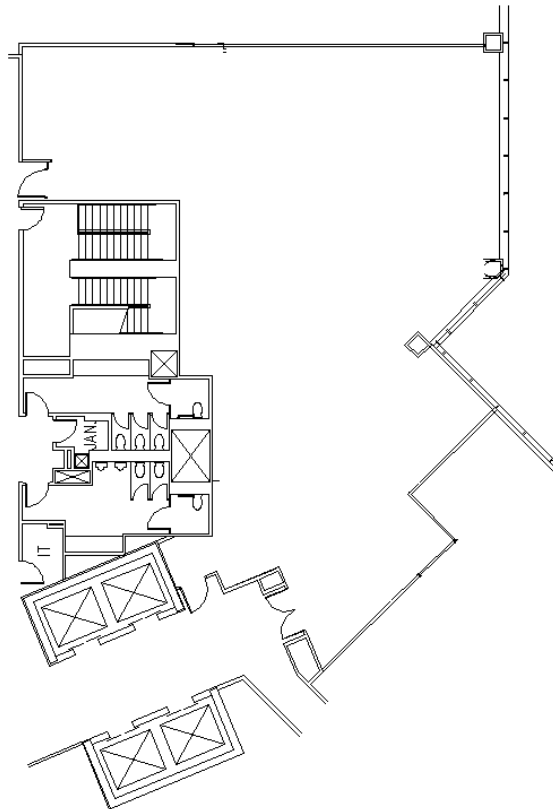
## THIRD FLOOR PLAN



## DETAILS

**Square Feet:** 3,941 S.F.  
**Net Rent:** \$15.00/S.F.  
**OP. Expense:** \$7.96/S.F.  
**Tax:** \$2.86/S.F.  
**Gross Rent:** \$25.82/S.F.

## SPACE PLAN



## CONTACT INFORMATION

### David Andrews

✉ [da@hpre.com](mailto:da@hpre.com)

P 630-719-5565  
F 630-719-5570

### Philip Sheridan

✉ [phil\\_sheridan@hpre.com](mailto:phil_sheridan@hpre.com)

P 630-719-5567  
F 630-719-5570

### Paul O'Connor

✉ [poconnor@hamiltonpartners.com](mailto:poconnor@hamiltonpartners.com)

P 630-250-4876  
F 630-250-8521