

# 333 S. Grand Ave.

*Prime Downtown Los Angeles Sublease*

4,000 to 11,922 SF

Suite#	RSF	Available
3400	11,922	Immediately

**\$2.75 FSG**

Asking Rent

Flexible up to September  
30, 2025

**Will Adams**

Executive Managing Director

t 213-810-2232

will.adams@nrmk.com

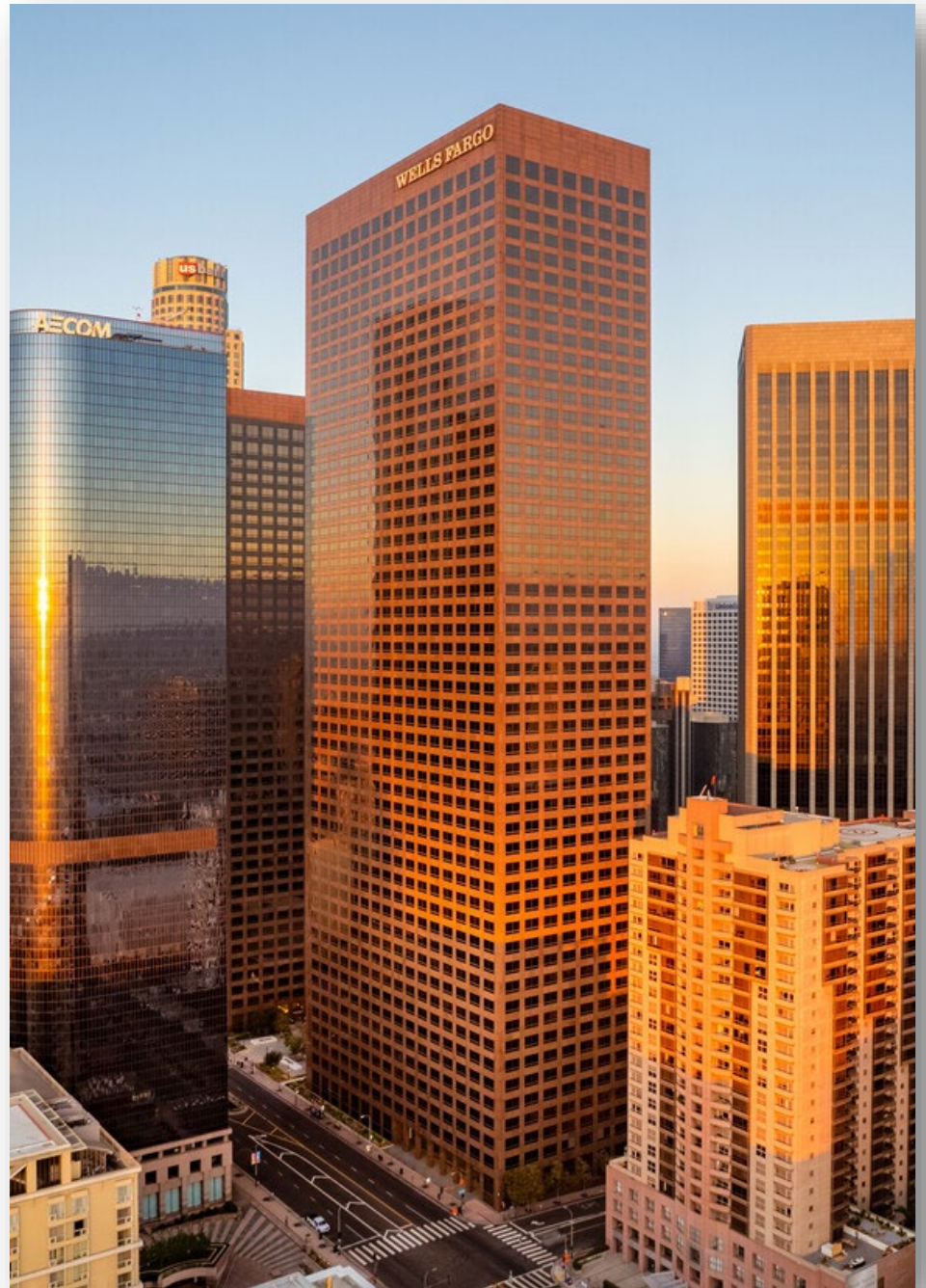
**Deanna Linck**

Brokerage Services Specialist

t 818-397-3208

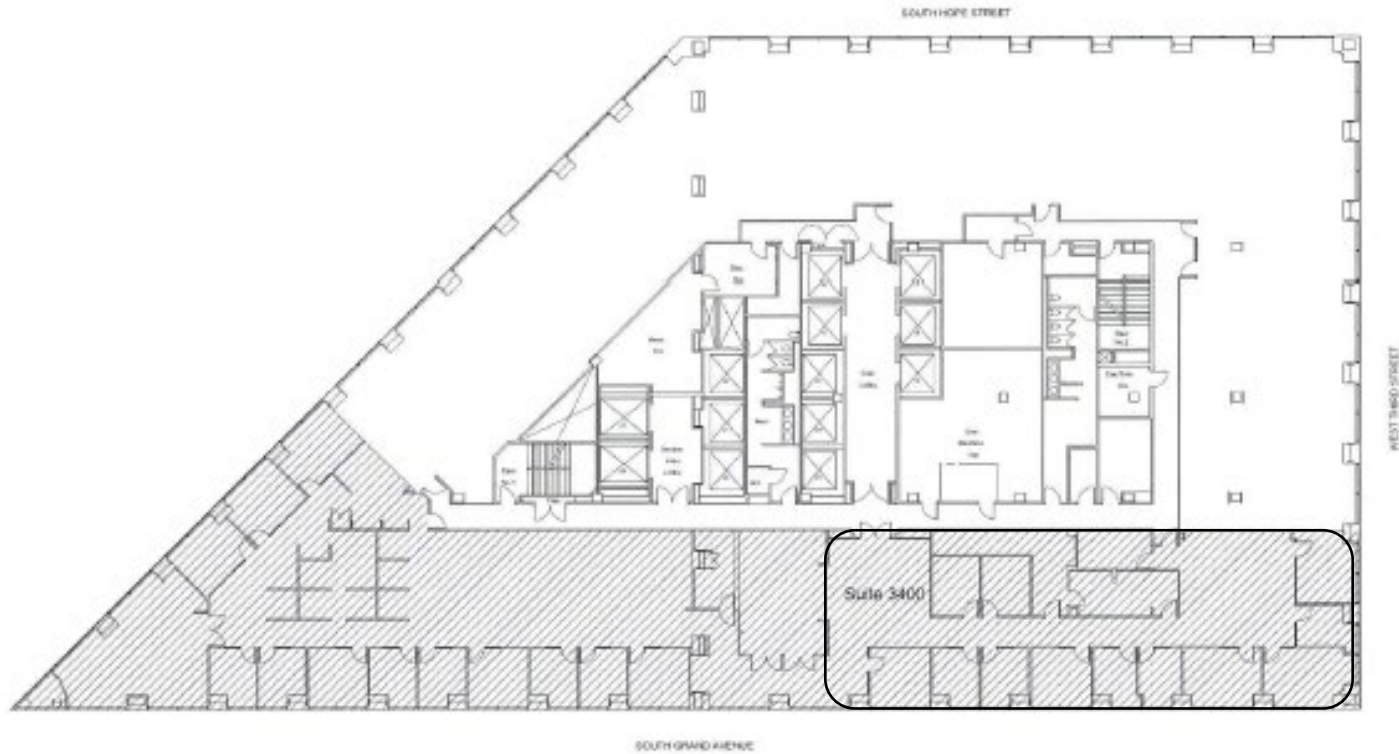
deanna.linck@nrmk.com

**NEWMARK**



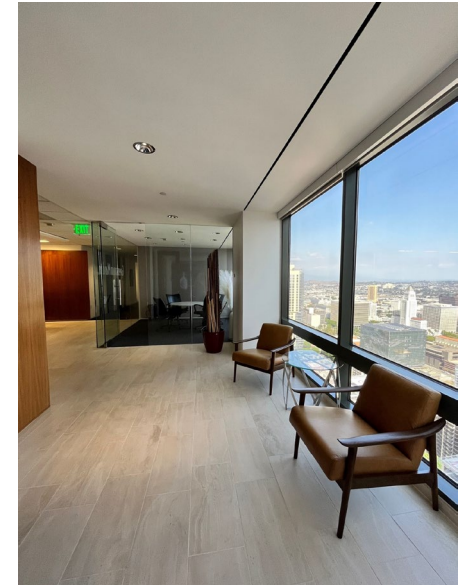
# Floor Plan

333 S. Grand Avenue | Suite 3400 Available for Sublease



# Suite 3400

333 S. Grand Avenue | Suite 3400 Available for Sublease



Large Conference Room

Lobby

Kitchenette

---

# 333 S. Grand Avenue

## Suite 3400 Available for Sublease

---

*Prepared by:*

**Will Adams**  
*Executive Managing Director*

t 213-810-2232  
will.adams@nmrk.com  
CA RE Lic. #01131941

**Deanna Linck**  
*Brokerage Services Specialist*

t 818-397-3208  
deanna.linck@nmrk.com  
CA RE Lic. #02180961

Procuring broker shall only be entitled to a commission, calculated in accordance with the rates approved by our principal only if such procuring broker executes a brokerage agreement acceptable to us and our principal and the conditions as set forth in the brokerage agreement are fully and unconditionally satisfied. Although all information furnished regarding property for sale, rental, or financing is from sources deemed reliable, such information has not been verified and no express representation is made nor is any to be implied as to the accuracy thereof and it is submitted subject to errors, omissions, change of price, rental or other conditions, prior sale, lease or financing, or withdrawal without notice and to any special conditions imposed by our principal.