



For Sale



Accelerating success.

202 E Earll Dr

Suite 160, Phoenix, AZ 85012

±5,606 SF Office Condominium

John Barnes
Vice President
+1 602 222 5042
john.barnes@colliers.com

Matt Fitz-Gerald
Senior Vice President
+1 602 222 5178
matt.fitz-gerald@colliers.com

Colliers
2390 E Camelback Rd, Ste 100
Phoenix, AZ 85016
colliers.com/arizona

Executive Summary

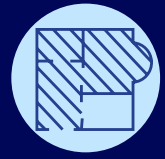
As the exclusive agent, Colliers is pleased to present for sale Suite 160 at the Earll Professional Plaza, an office condominium development located at 202 E Earll Drive, Phoenix, Arizona. This unit consists of ±5,606 square feet of space currently used as a law firm office, but can work well for many types of businesses. The space is well located on the ground floor lobby as you enter the building and in a “move-in ready” condition. If you are looking for an efficiently designed space in great condition, that is conveniently located near the visitor parking, this is the space.



\$1,653,770
asking price



Cable and Internet



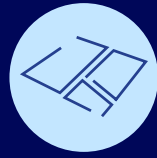
±5,606 SF
office condo



Year Built
1985, renovated ~2007
Suite renovated 2022



5 reserved spaces
Included with transaction



Parcel Number
118-34-276



Zoning
R-5 City of Phoenix



The Location

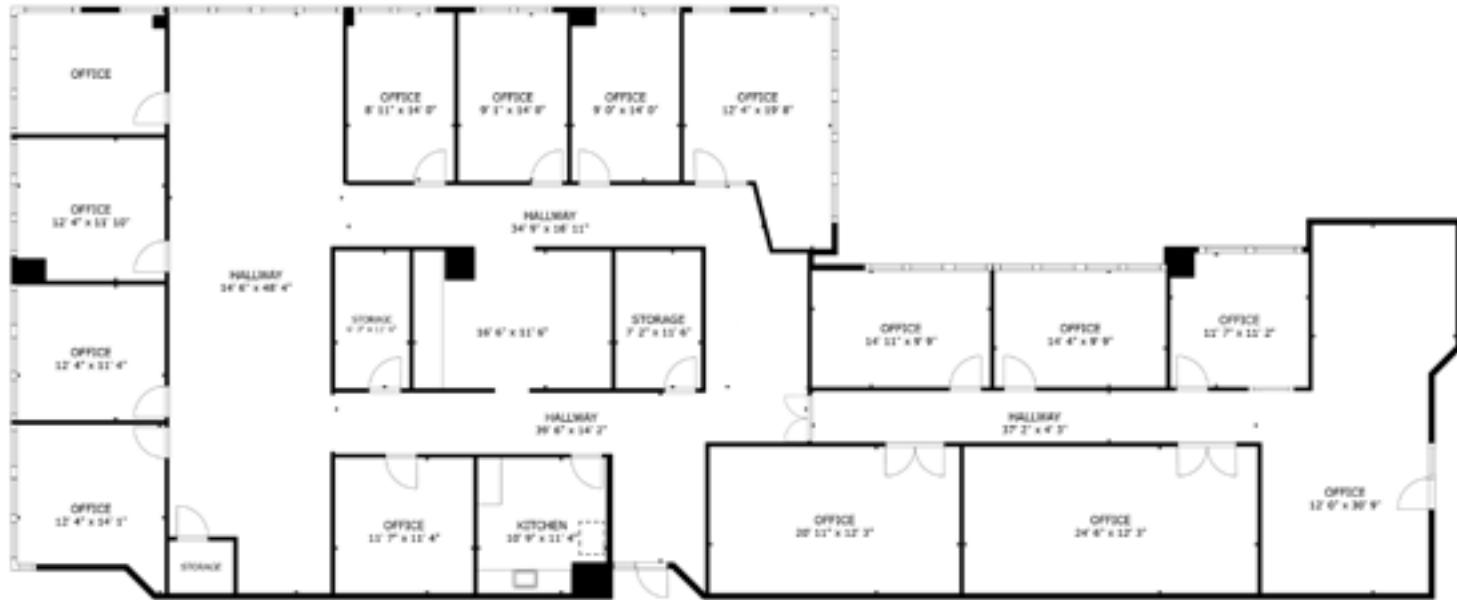
Earll Professional Plaza is centrally located on Earll Drive between Central Avenue and Third Street in Midtown Phoenix. This offers an owner easy access in and out of the property. Major positive influences in this area include Park Central Mall with lots of retail amenities and a fitness tenant, St. Joseph’s Hospital and Barrow Neurological Institute part of the Dignity Health network, Creighton University - Phoenix, the Phoenix Country Club established in 1899 which currently hosts the Charles Schwab Cup Championship, two light rail stations, and many upscale residential opportunities for employees and executives. Interchanges for the I-10, SR-51, and I-17 freeways are only minutes away.

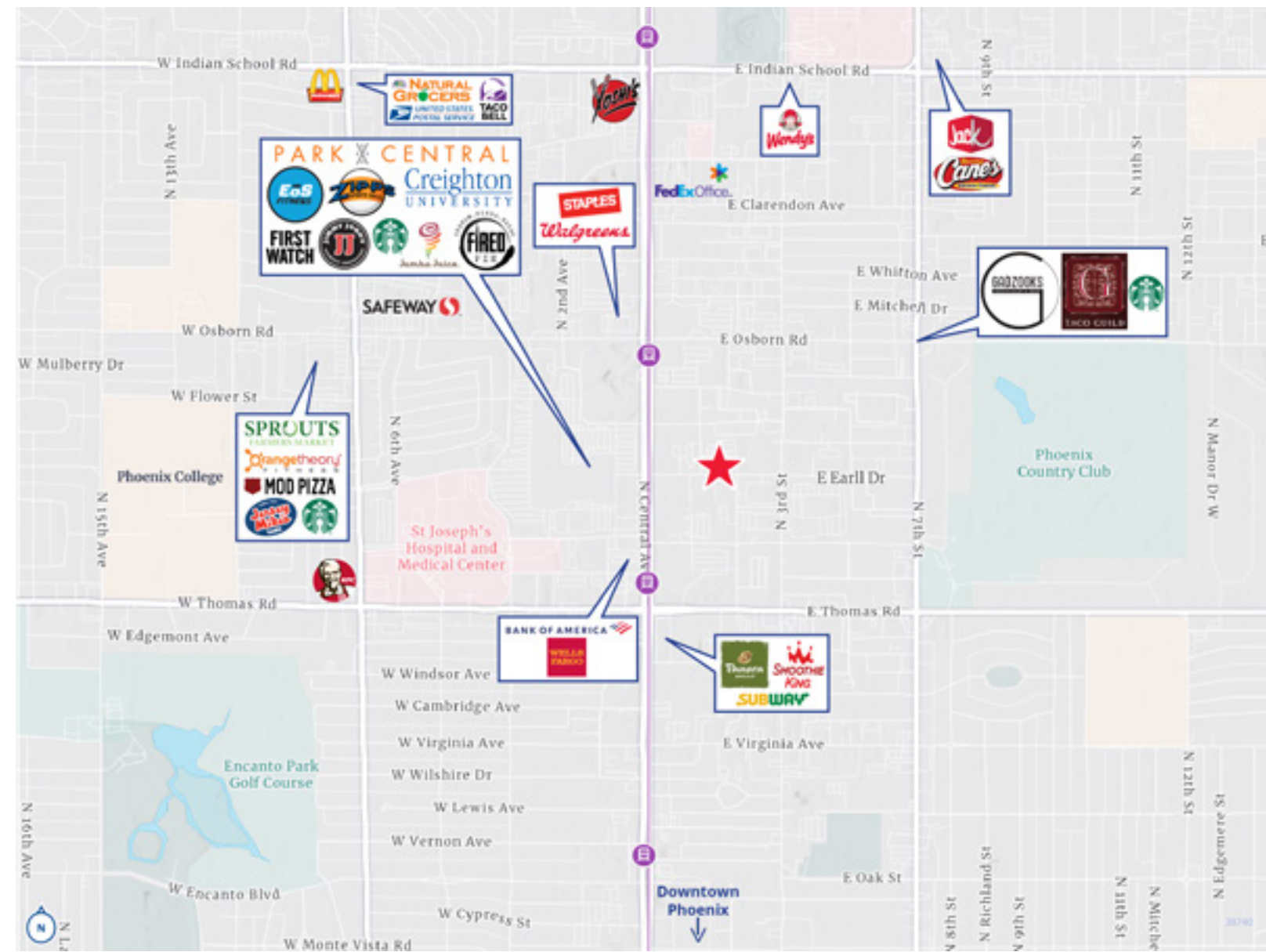
The Property

Earll Professional Plaza is a four-story professional office condominium development that was originally constructed in 1985 and converted to office condos in 2006/2007. The property is professionally managed and well maintained which is evident when you tour the property. Unit owners in the development include attorneys, engineers, and medical offices. Located on the ground floor lobby of the building, Unit 160 is approximately 5,506 rentable square feet in size and is currently used as law firm space. The suite was completely renovated in 2022 for the current owner, and it is an efficient layout that could work for many different types of businesses. The suite features convenient access to parking for visitors and lots of windowed offices with natural light ([Click here to see the virtual tour](#)). The space is “move in” ready and available for occupancy in a relatively short period of time.

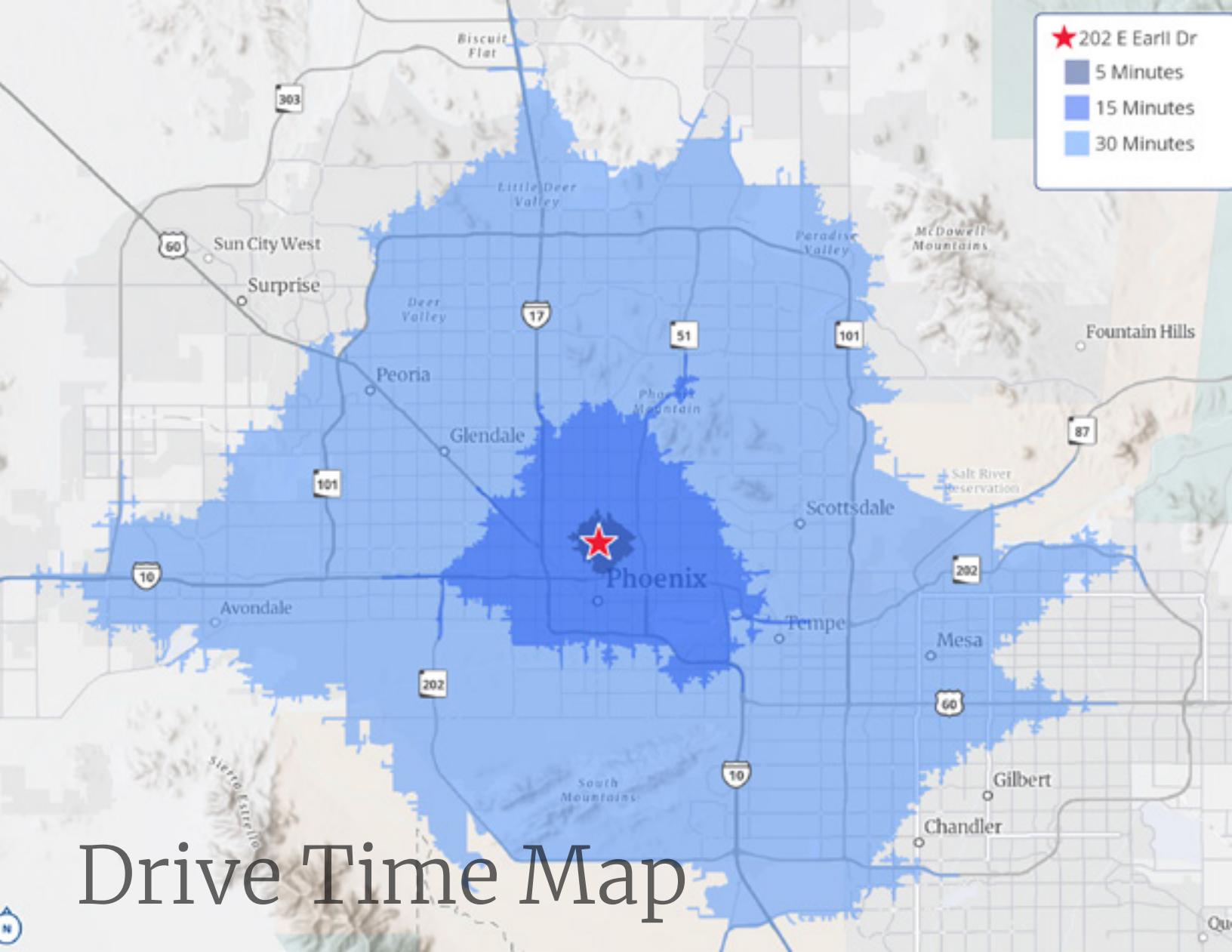


Floor Plan Suite 160





Amenities Map



2390 E Camelback Rd, Ste 100
 Phoenix, AZ 85016
colliers.com/arizona

This document/email has been prepared by Colliers for advertising and general information only. Colliers makes no guarantees, representations or warranties of any kind, expressed or implied, regarding the information including, but not limited to, warranties of content, accuracy and reliability. Any interested party should undertake their own inquiries as to the accuracy of the information. Colliers excludes unequivocally all inferred or implied terms, conditions and warranties arising out of this document and excludes all liability for loss and damages arising there from. This publication is the copyrighted property of Colliers and /or its licensor(s). © 2024. All rights reserved. This communication is not intended to cause or induce breach of an existing listing agreement. Colliers International AZ, LLC.

John Barnes
 Vice President
 602 222 5042
john.barnes@colliers.com

Matt Fitz-Gerald
 Senior Vice President
 602 222 5178
matt.fitz-gerald@colliers.com

