



Industrial at FREMONT STATION

NEW OWNERSHIP



±128,400 SF
MULTI-TENANT ADVANCED
MANUFACTURING / WAREHOUSE



NEWMARK  **LONGPOINT**

2700 - 2728 PRUNE AVENUE | FREMONT, CALIFORNIA

FEATURES

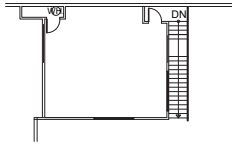
Industrial at FREMONT STATION

- New Institutional Ownership
- Brand New Enhanced Exterior & Interior Renovations
- Ideal Transit Focused Location:
 - 4 min walk to Warm Springs / South Fremont BART Station
 - Easy Access to I-880 & I-680
- High Visibility Corner Location
- Current Availabilities + Future Expansion Opportunities

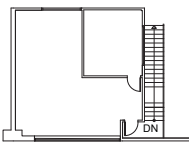
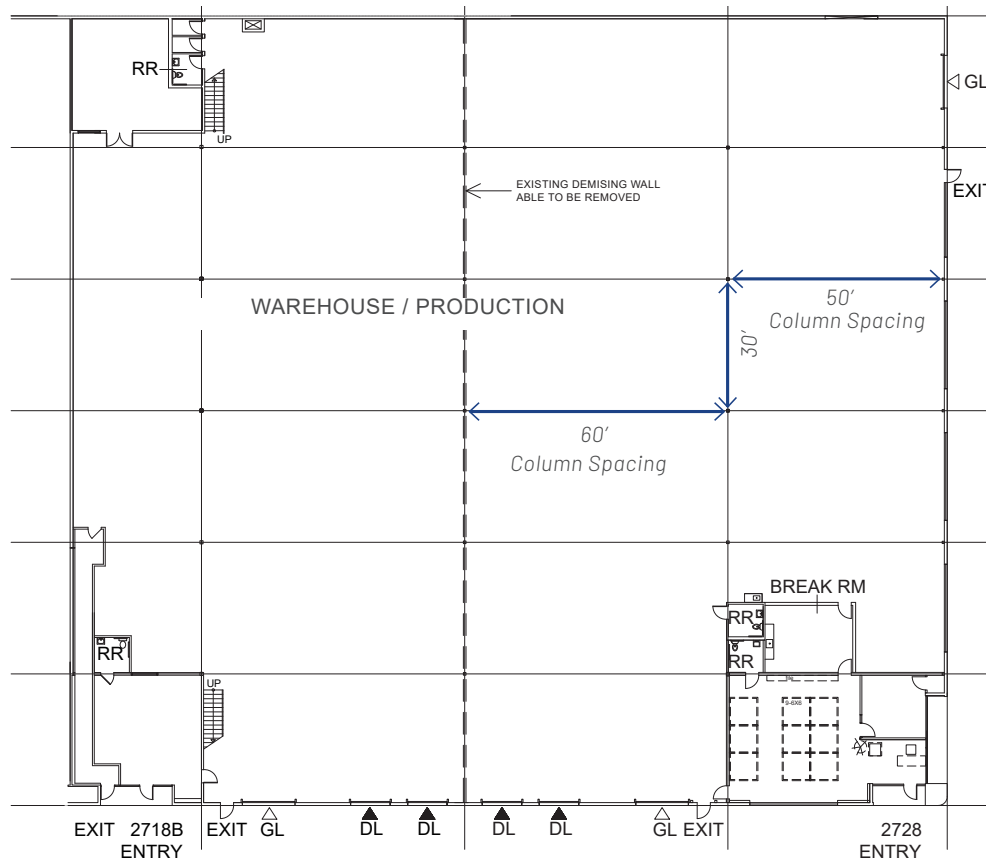
FLOOR PLAN

SPACE HIGHLIGHTS

2718-2728 Prune Avenue



FLOOR PLAN: MEZZANINE (REAR)



FLOOR PLAN: MEZZANINE (FRONT)

- ±38,756 Square Feet (potentially divisible)
- High-Visibility Corner Unit
- Up to ±1,200 Amps at 277/480 Volts Power
- ±4,745 SF Office (multiple office pods)
- 24' Clear Height in Warehouse/Production Area
- 4 Dock Doors | 3 Grade Level Doors
- 30' x 50'-60' Column Spacing
- Insulated Warehouse
- Ample Parking
- Skylights Throughout
- Tenant Improvement Dollars Available
- Available Q3

Now Touring - Contact Brokers to Schedule

MAP



BAYSIDE TENANTS

Tesla
Super Micro Computer
Apple

LAM Research
Quanta

Tesla
UL
RK Logistics
Seagate

Thermo Fisher

Tesla

Industrial at
FREMONT STATION



WARM SPRINGS/
SOUTH FREMONT

Waymo

Amazon

Home Depot

Walmart

Western Digital

5

MINUTES

**I-880 &
I-680**

6

MILES

CA-237

10

MILES

SJC

20

MILES

STANFORD

24

MILES

OAK

34

MILES

SFO

Industrial at FREMONT STATION

±128,400 SF MULTI-TENANT ADVANCED MANUFACTURING / WAREHOUSE

JOE KELLY
408.987.4111
joe.kelly@nrmk.com
CA RE License #01420963

CURTIS STAHLE
510.300.0222
curtis.stahle@nrmk.com
CA RE License #01955258

3055 Olin Avenue, Suite 2200, San Jose, CA 95128

The distributor of this communication is performing acts for which a real estate license is required. The information contained herein has been obtained from sources deemed reliable but has not been verified and no guarantee, warranty or representation, either express or implied, is made with respect to such information. Terms of sale or lease and availability are subject to change or withdrawal without notice. **7674275 • 03/26**

NEWMARK  **LONGPOINT**

2700 - 2728 PRUNE AVENUE | FREMONT, CALIFORNIA