



FOR LEASE

SOUTH FORK PLAZA

📍 2800 SOUTH 2ND STREET | CABOT, AR 72023

Information is deemed reliable but is not guaranteed. Agency Disclosure: RPM Group is the agent for the owner of the property described herein.

ANDY NEWBERG

501.519.1098 | WWW.RPMGROUP.COM

ANEWBERG@RPMGROUP.COM



2800 SOUTH 2ND STREET
CABOT, AR

FOR LEASE

PROPERTY INFORMATION

Prime retail space is available for lease in the highly visible Southfork Shopping Center in Cabot, AR, with suites ranging from 800 to 5,400 square feet. The center offers excellent marquee signage, an easily accessible location with 207 parking spaces, and great traffic with approximately 11,000 VPD. Suites 2792D and 2792E are ready for buildout to fit your business needs. Tenant improvements are negotiable. Zoned C-2 Commercial, this space is ideal for a variety of retail or service uses. Contact us today to schedule a tour and explore this prime location!

> LEASE RATE	\$16.00/SF/YR Modified Gross	> 2794 D	800 SF ±
> SUITES AVAILABLE	800 - 5,400 SF ±	> 2792 A-C	5,400 SF ±
> ZONING	C-2	> 2792 B	1,800 SF ±
> YEAR BUILT	2006	> 2792 E	1,800 SF ±
		> 2790 B	825 SF ±



Information is deemed reliable but is not guaranteed. Agency Disclosure: RPM Group is the agent for the owner of the property described herein.

ANDY NEWBERG

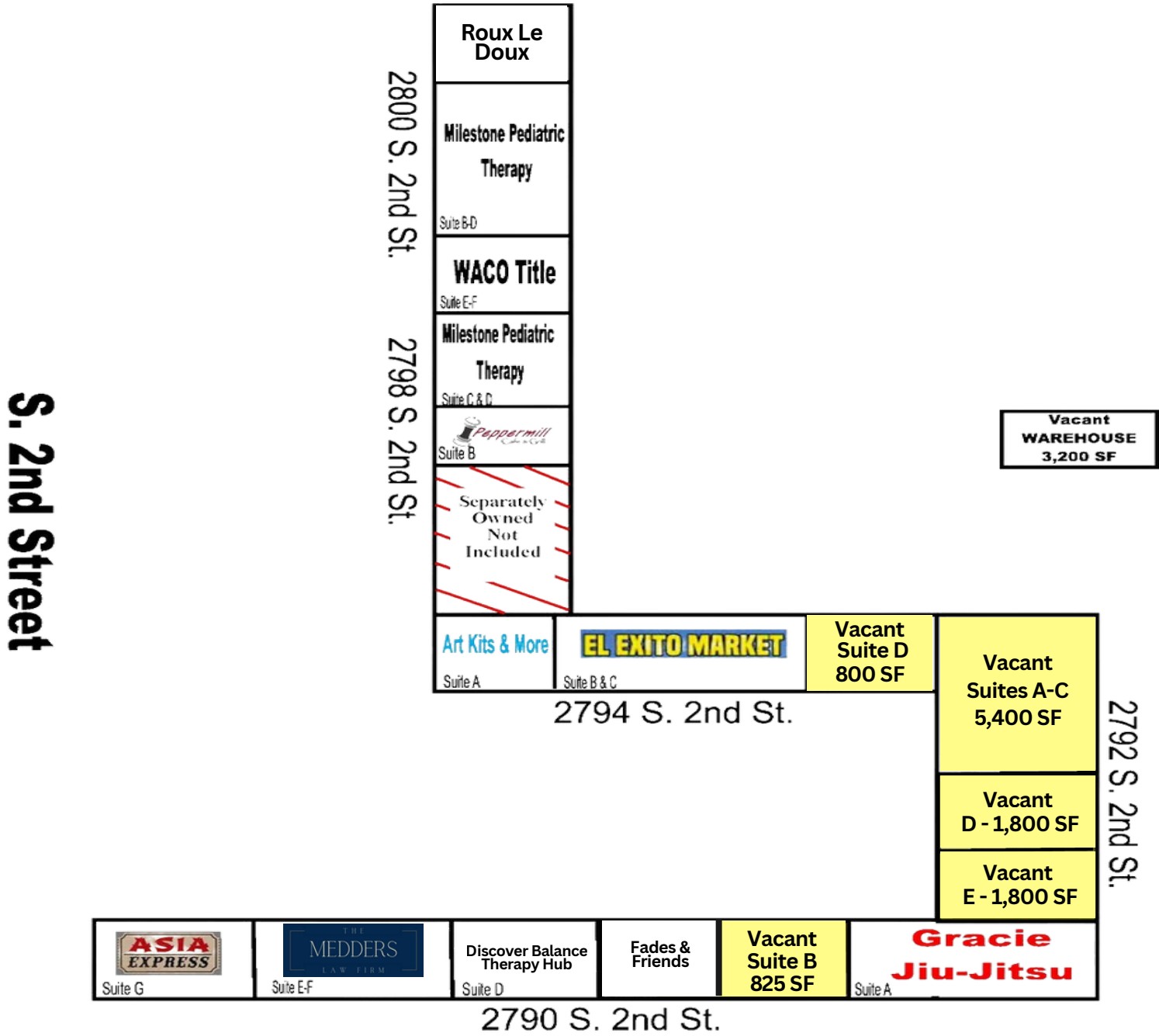
501.519.1098 | WWW.RPMGROUP.COM
ANEWBERG@RPMGROUP.COM



2800 SOUTH 2ND STREET
CABOT, AR

FOR LEASE

EXHIBIT "A"
SOUTH FORK SHOPPING CENTER



Information is deemed reliable but is not guaranteed. Agency Disclosure: RPM Group is the agent for the owner of the property described herein.

ANDY NEWBERG
501.519.1098 | WWW.RPMGROUP.COM
ANEWBERG@RPMGROUP.COM



2800 SOUTH 2ND STREET
CABOT, AR

FOR LEASE



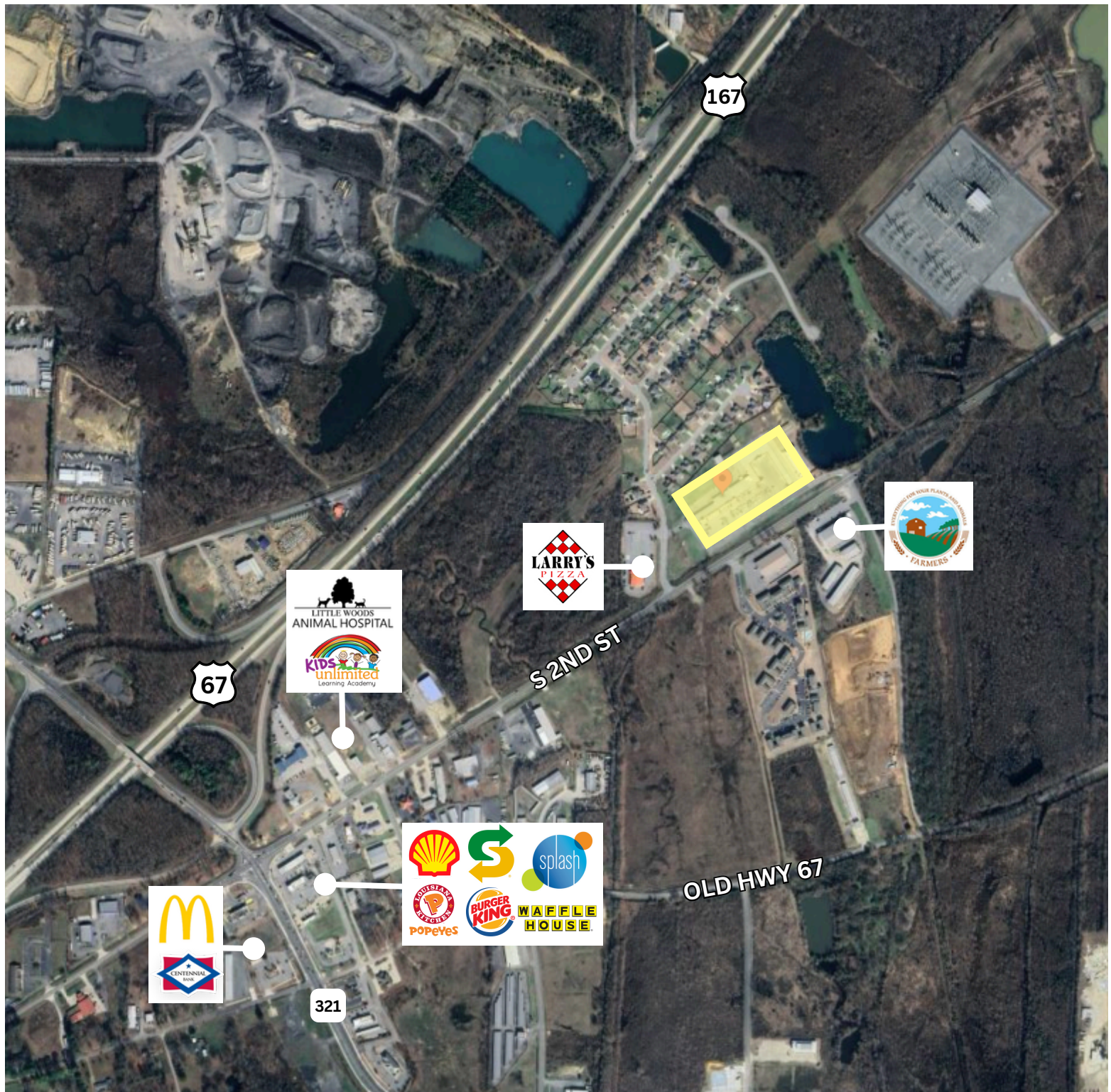
Information is deemed reliable but is not guaranteed. Agency Disclosure: RPM Group is the agent for the owner of the property described herein.

ANDY NEWBERG
501.519.1098 | WWW.RPMGROUP.COM
ANEWBERG@RPMGROUP.COM



2800 SOUTH 2ND STREET
CABOT, AR

FOR LEASE



Information is deemed reliable but is not guaranteed. Agency Disclosure: RPM Group is the agent for the owner of the property described herein.

ANDY NEWBERG

501.519.1098 | WWW.RPMGROUP.COM

ANEWBERG@RPMGROUP.COM

