

OFFICE
LEASE



PARK HEIGHTS BUILDING

1800 112th Avenue NE | Bellevue, WA

Grant Rubenstein

425.289.2220

grant@rosenharbottle.com

425.454.3030
rosenharbottle.com

PO Box 5003
Bellevue, WA 98009 - 5003





LAST OFFICE SPACE NEAR DOWNTOWN BELLEVUE

972 - 2,081 SF Available



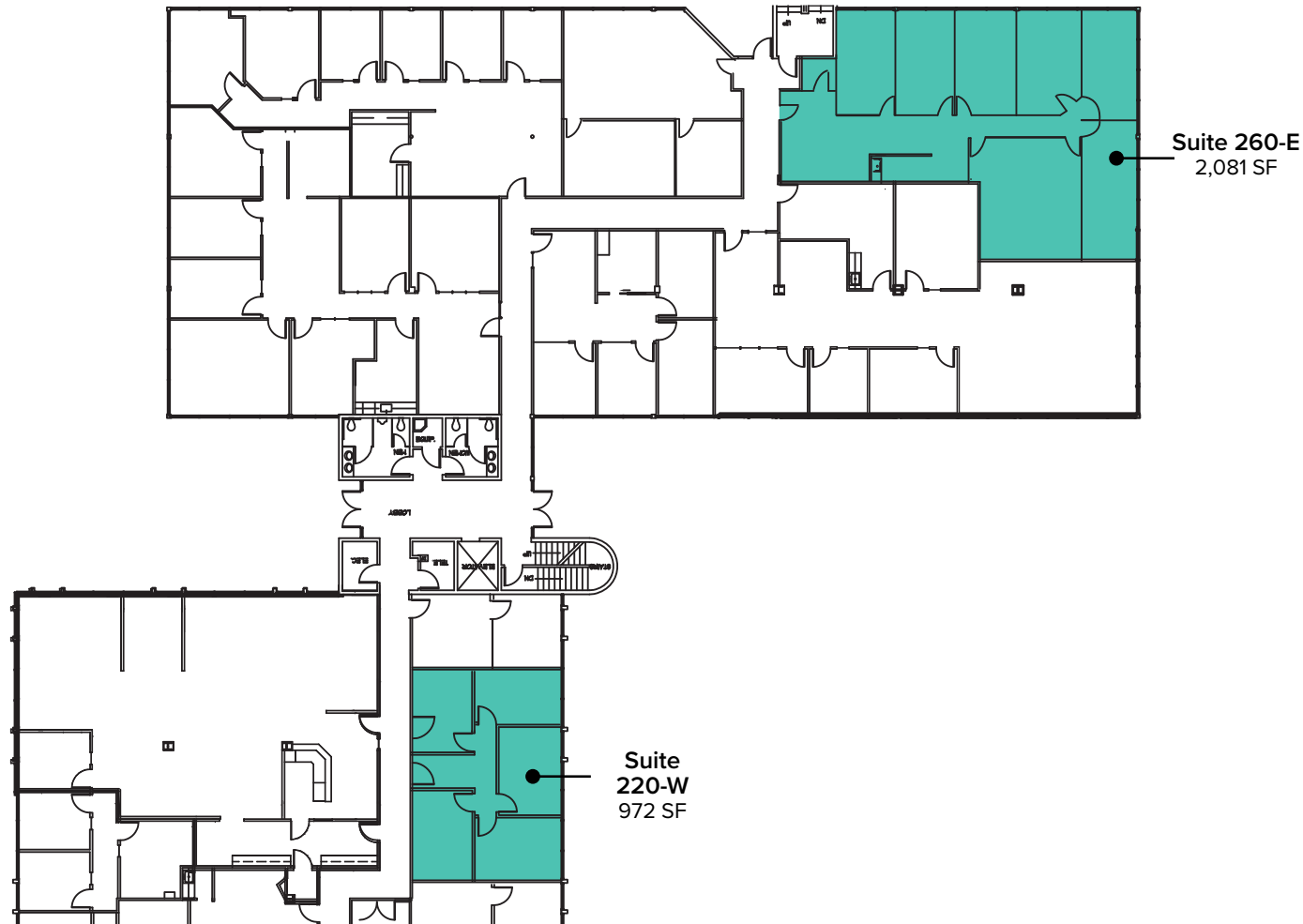
PROPERTY FEATURES:

- Close-In Bellevue Location
- Free Surface Parking
- Minutes from Downtown Bellevue, Bellevue Square, Future Link Light Rail Station, Overlake Medical Center, and Spring District
- Located next to I-405 and SR-520

The information provided herein has been obtained from sources believed to be reliable, but no representation or warranty, express or implied, is made with respect to the accuracy or completeness of any such information. Each prospective buyer or tenant should independently investigate, evaluate and verify all information provided herein and any other matters deemed material. Please consult your attorney, tax advisor or other professional advisor. The terms of sale or lease set forth herein are subject to change or withdrawal at any time and without notice.

SECOND LEVEL FLOOR PLAN

Suite	Square Feet	Rate	Notes
220-W	972 SF	\$4,050/Mo, Full Service	Efficient layout with reception, 4 private offices and a 2nd exit. Perfect for a small therapy office. Available with 15 days notice.
260-E	2,081 SF	\$40.00/SF, Full Service	Corner office space with natural lighting, 8 private offices, kitchenette, and reception area. Available Now.



The information provided herein has been obtained from sources believed to be reliable, but no representation or warranty, express or implied, is made with respect to the accuracy or completeness of any such information. Each prospective buyer or tenant should independently investigate, evaluate and verify all information provided herein and any other matters deemed material. Please consult your attorney, tax advisor or other professional advisor. The terms of sale or lease set forth herein are subject to change or withdrawal at any time and without notice.

LOCATION MAP

