

Dedicated Desk Membership Plan

Inventory:

- Personal desk space.
- Furnishing includes: standing desk, ergonomic chair & lockable drawer set.
- Shared communal phone booths + security cameras.
- Lights, electricity, power plugs, switch.
- Onsite parking.

Monthly membership fee includes:

- 4x communal luxury bathrooms (inc. shower facility) and kitchen.
- Overheads: HVAC/ Heating, utilities, high speed wifi, amenities, pest control, janitorial services, workspace.
- Doorman/ concierge services.
- Free private phone booths.
- Conference room facility access.
- Amenities upkeep inc. greenery.

Set up fee covers:

- Loloft community app access.
- Keycard access.
- Decal sticker (optional).
- Welcome packet.

Tour

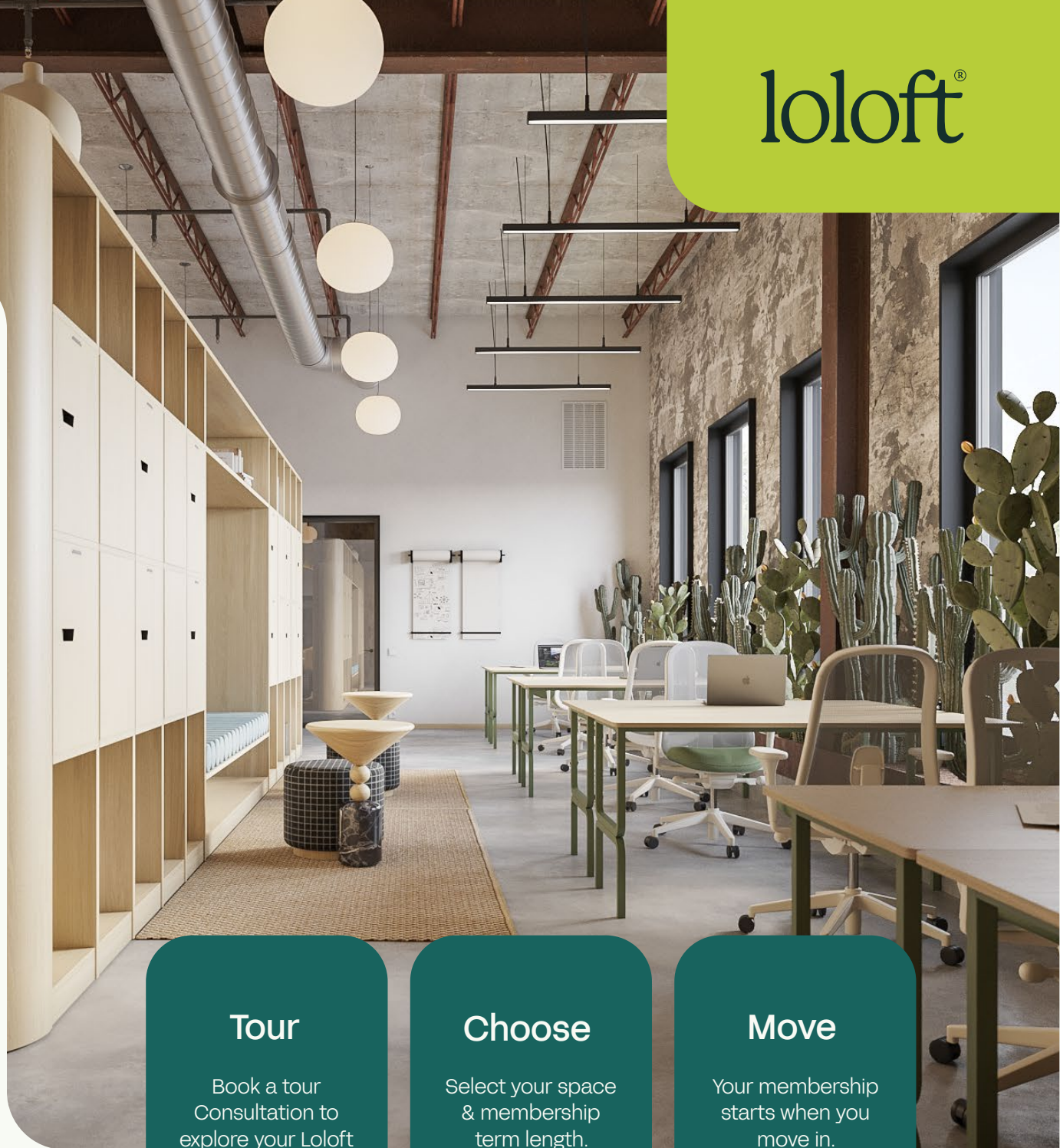
Book a tour
Consultation to
explore your Loloft
options.

Choose

Select your space
& membership
term length.

Move

Your membership
starts when you
move in.



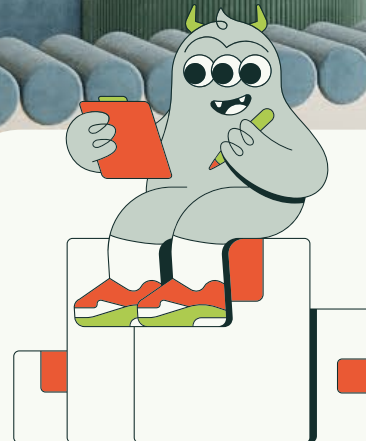
Membership Plan Benefits:

- No long-term contracts.
- Transparent monthly fee (inc. all bills + utilities).
- Free daily coffee (Onyx) & herbal tea.
- Hassle-free credit card, cash, check & ACH payment options each month.
- Community networking events.
- Free event space inc. for 1st month (\$1275 value).
- \$100 room booking/ \$20 printing credits.
- 24/7 Access for you and your guests.
- Size up or down as you grow with 30 days notice.
- Discount for multiple inventory/ element type bundles.

Secure your space now with 2x months deposit, first month upfront and a \$150-set up fee.

Pricing provided during tour session.

loloft®



Contact us to secure your Loloft space and membership today.



+1 479 208 6499



info@loloft.com