

AVENUE



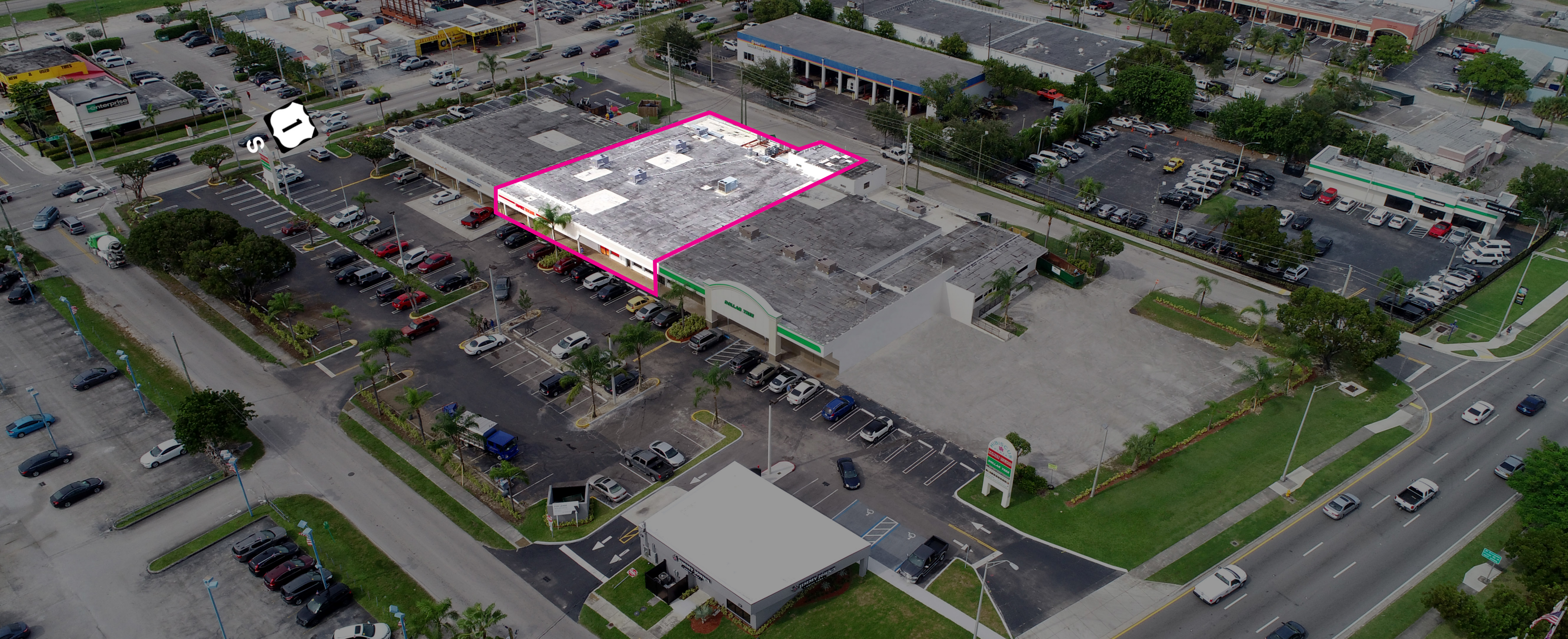
PROPOSED
EXPANSION

9823 E HIBISCUS ST

PALMETTO BAY | FLORIDA

RETAIL
FOR LEASE





PREMISES

9823 E HIBISCUS ST

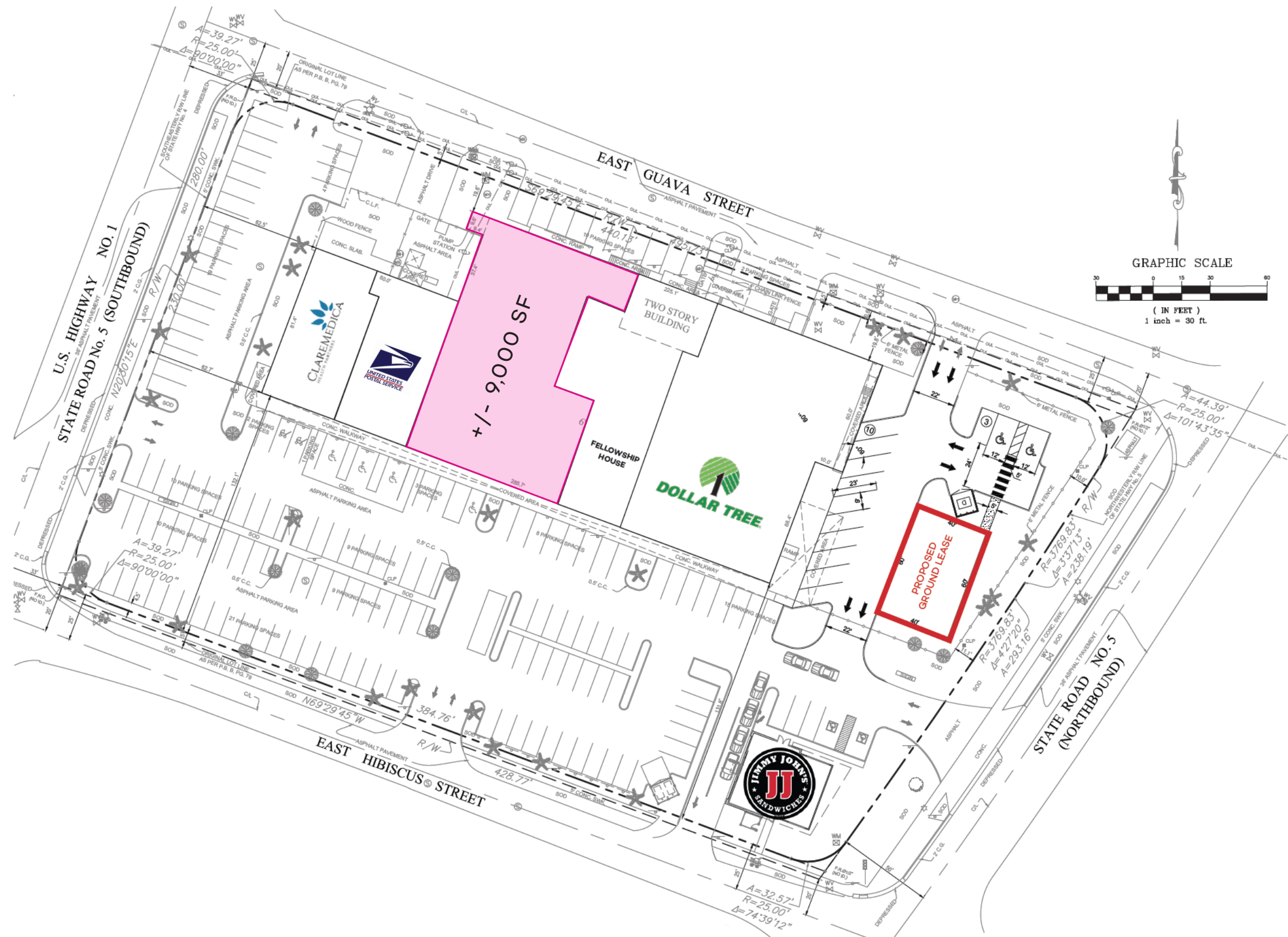
EXISTING SPACE : +/- 9,000 SF

RENT UPON REQUEST

DELIVERY UPON REQUEST

PROPERTY INFORMATION

- INCREDIBLE VISIBILITY AND FRONTAGE ON US 1 WITH NORTH AND SOUTH ENTRRANCE
- TRAFFIC COUNT OF OVER 50,000 CARS PER DAY
- TOWER SIGNAGE OPPORTUNITY
- ONSITE CONVENIENT PARKING



FLOOR PLAN

+/- 9,000 SF



9823 E HIBISCUS ST



E HIBISCUS ST

E HIBISCUS ST

SOUTH MIAMI DADE BUSWAY

S DIXIE HWY

S DIXIE HWY

AERIAL VIEW



EXCLUSIVE LISTING AGENTS

Aaron J. Butler
305 397 8012
ajbutler@avenuerep.com

WWW.AVENUEREP.COM