

FOR LEASE

Malta Center

Malta, NY 12020



PROPERTY INFO

- Highly visible street level retail, office/medical facing Route 9. (13,745 AADT)
- Easy access off I-87 Exit 12.
- Built-in customer base with 312 residential apartments & lofts on site.
- ± 1,800 new apartments within the immediate area.
- Tremendous growth and economic drivers, such as Global Foundries with 3,000+ employees and thousands more, both direct and indirect, as they expand within their 1,110-acre campus.

2024 Demographics

	1 Miles	3 Miles	5 Miles
Population	4,689	16,543	39,278
Average HH Income	\$162,177	\$148,205	\$136,411
Est. Adj. Daytime Demographics (16+)	2,530	8,698	22,141

AVAILABLE SPACE

- 990 SF – 34,820 SF ±
- Max Contiguous: 9,240 SF ±

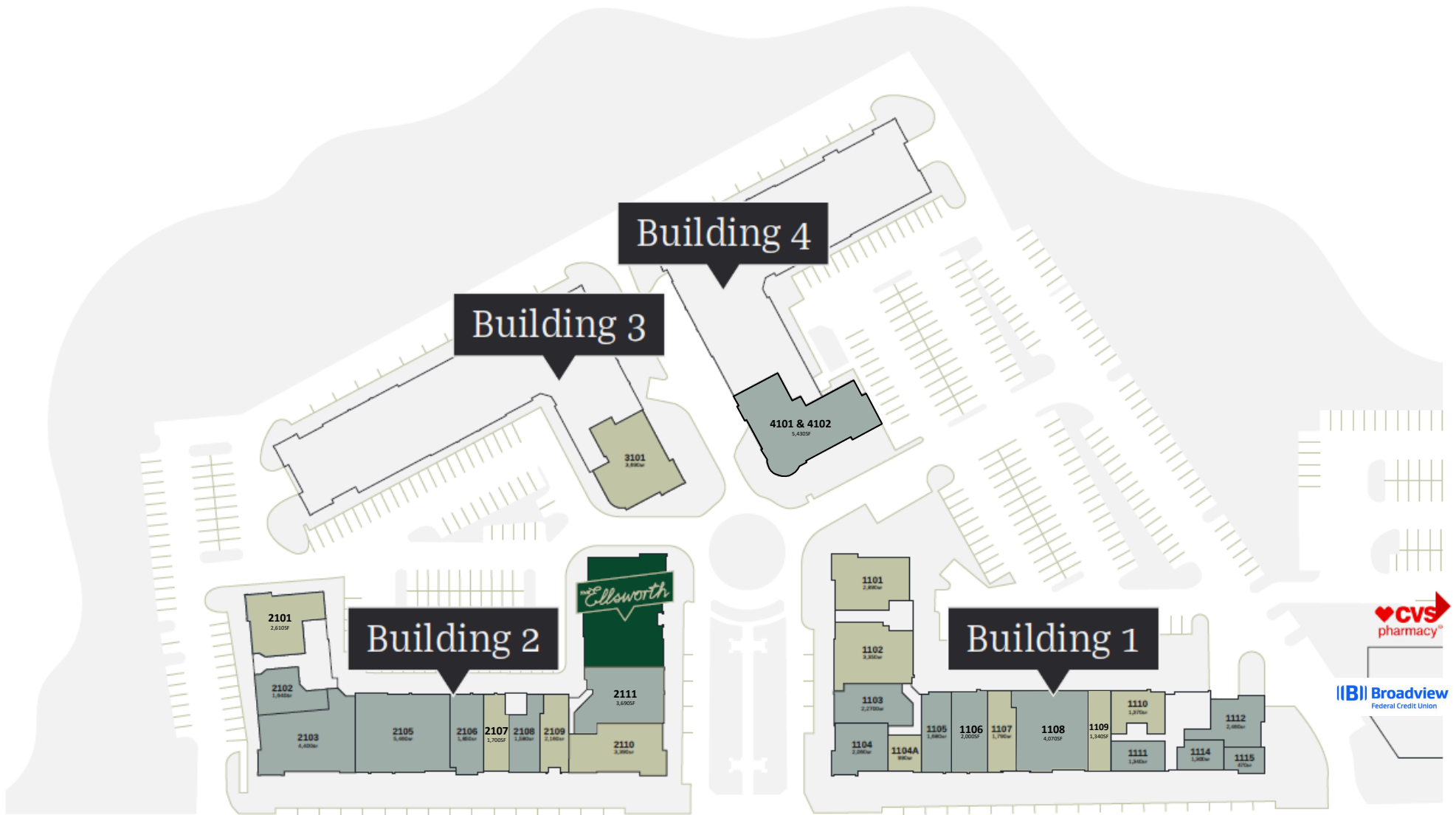
CALL FOR PRICING

Doug Morabito
Licensed Real Estate Agent

7 Southside Drive, Suite 200 | Clifton Park, NY 12065 | www.redmarkrealty.com | 518-952-7500 | info@redmarkrealty.com



Value...through performance



Route 9

13,745 AADT

Route 9

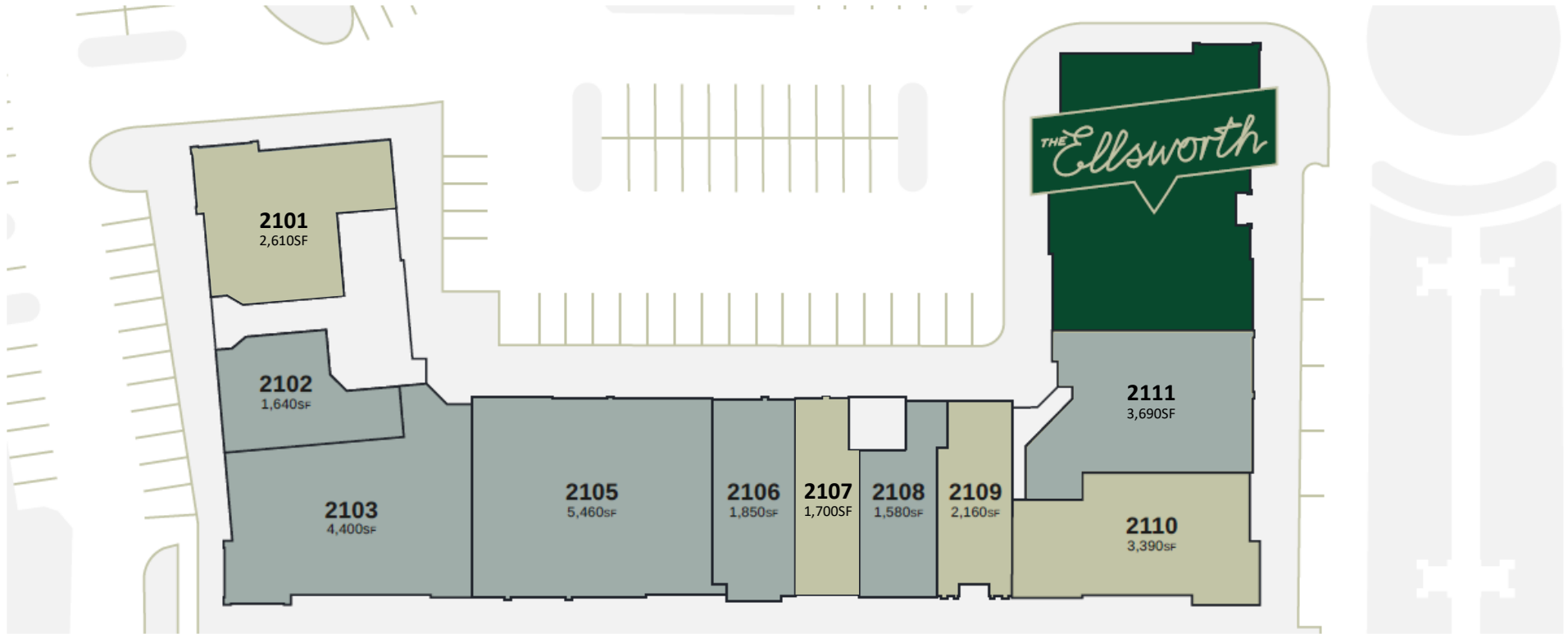
- ||||| Parking
- Available
- Leased



Building 1

1101	Available	1108	Pending Gov't Tenant
1102	Available	1109	Available
1103	Bua Thai Sushi	1110	Available
1104	Bowled	1111	House of Polish
1104A	Available	1112	Meliora Family Medicine
1105	Dollhouse & Co.	1114	Power of Communication
1106	Mama Pho	1115	Cetnar Consulting Group
1107	Available		

Parking
 Available
 Leased



Building 2

- |||| Parking
- Available
- Leased

2101	Available	2110	Available
2102	Active Solar Development	2111	Centrica
2103	Active Solar Development	2112	Residential Amenity Suite (Coming Spring 2024)
2105	Saratoga Hospital		
2106	Quest Diagnostics		
2107	Available (built out dental)		
2108	Valentino's Barber		
2109	Available		

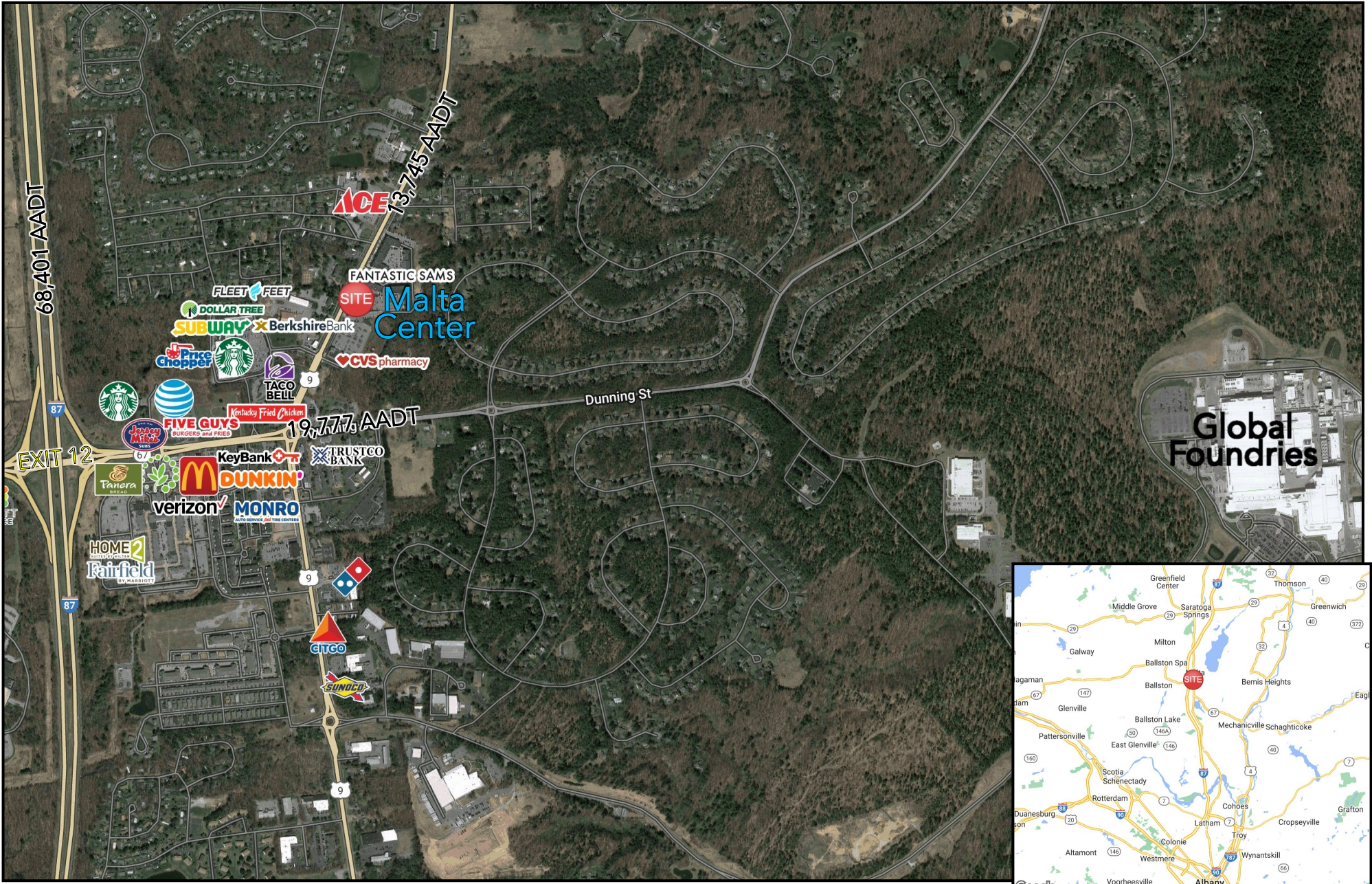


Building 3 & 4

3101	Available
4101 & 4102	FitBody

- |||| Parking
- Available
- Leased

FOR LEASE | Malta Center | 2545 Rt. 9 | Malta, NY 12020



Doug Morabito
Licensed Real Estate Agent



Value...through performance

7 Southside Drive, Suite 200 | Clifton Park, NY 12065 | www.redmarkrealty.com | 518-952-7500 | info@redmarkrealty.com