

# INDUSTRIAL SPACE FOR LEASE

1181 N Greece Rd, Ridgemont, NY 14626



## PROPERTY DETAILS

Building SF:	20,600
Lot Size:	2.0
Dock Doors:	10
Ceiling Height:	12'-20'
Year Built:	1992

## PROPERTY SUMMARY

1181 N Greece Rd, Ridgemont, NY 14626 features 20,600 SF of industrial space on 2.0 acres with 10 grade-level doors and ceilings ranging from 12'–20'. The property offers significant acreage for parking or outdoor storage, making it suitable for a variety of industrial or service uses. Located along the busy N Greece Road corridor, this site offers excellent visibility, easy access to Route 104 and I-390, and close proximity to downtown Rochester and surrounding retail and residential areas.



Visit  
Our  
Website

**Joe Cummings**  
3159809912

[jcumings@ironhornenterprises.com](mailto:jcumings@ironhornenterprises.com)



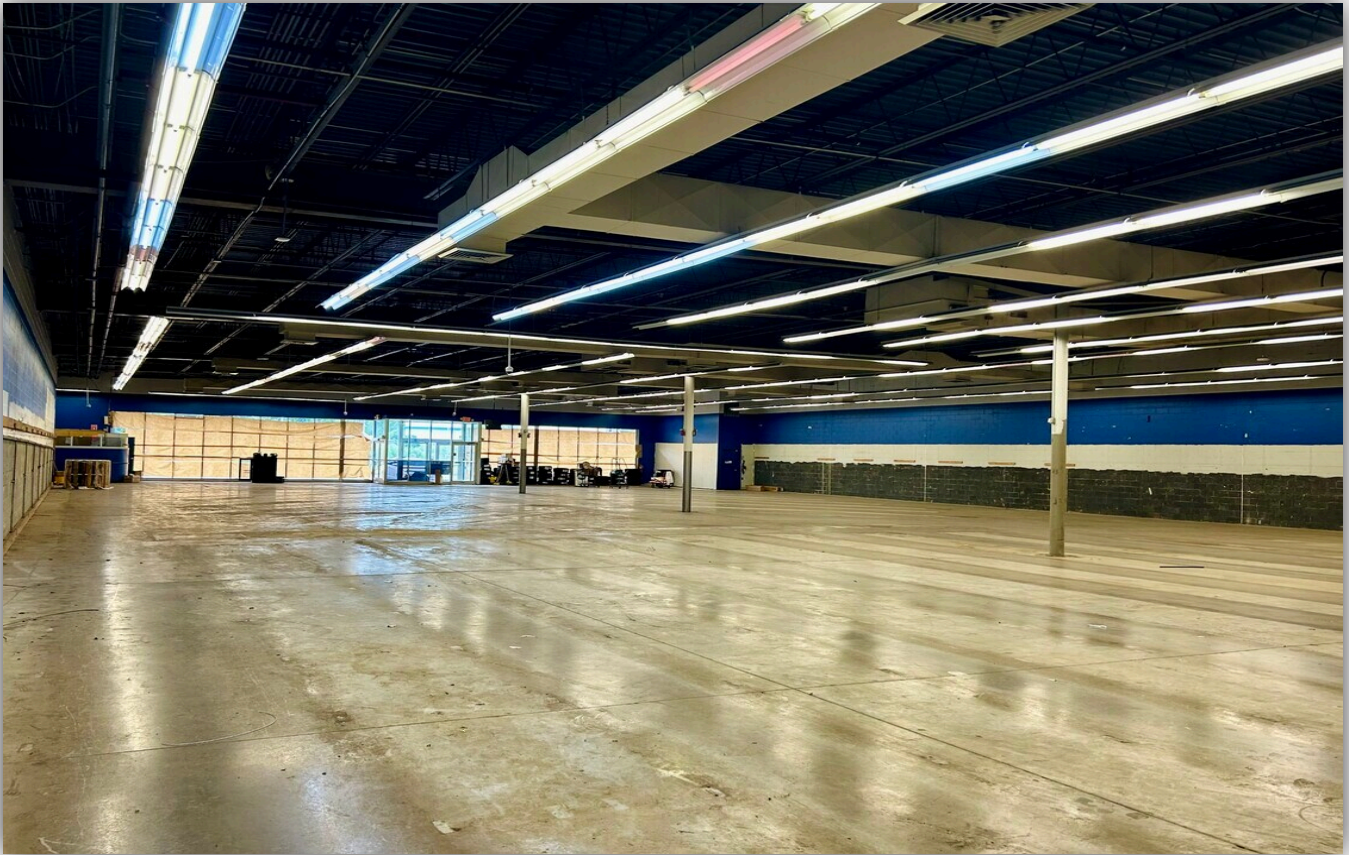
# INDUSTRIAL SPACE FOR LEASE

1181 N Greece Rd, Ridgemont, NY 14626



# INDUSTRIAL SPACE FOR LEASE

1181 N Greece Rd, Ridgemont, NY 14626



# INDUSTRIAL SPACE FOR LEASE

1181 N Greece Rd, Ridgemont, NY 14626

