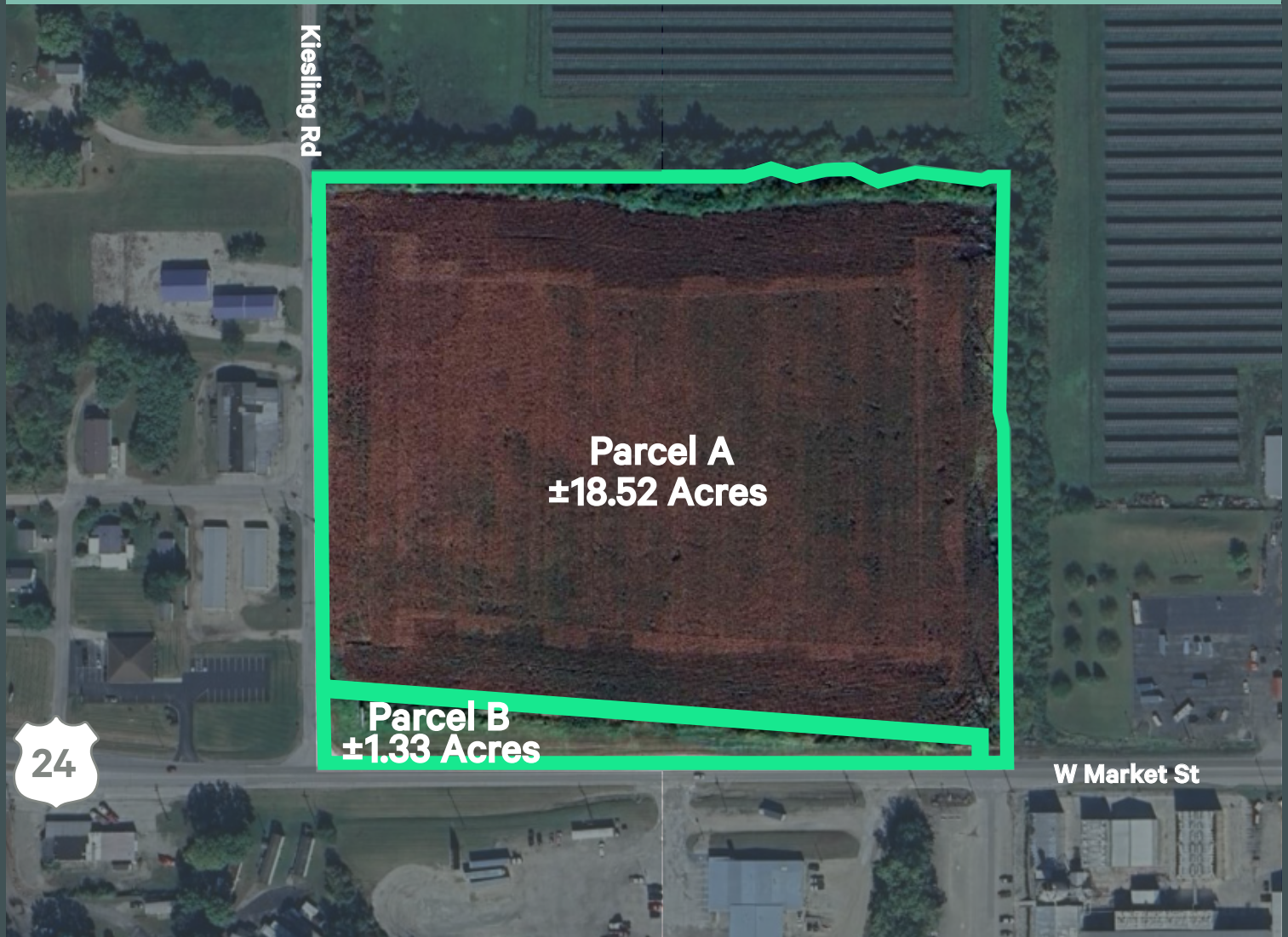


# Logansport Development Site

W. Market Street, Logansport, Indiana 46947

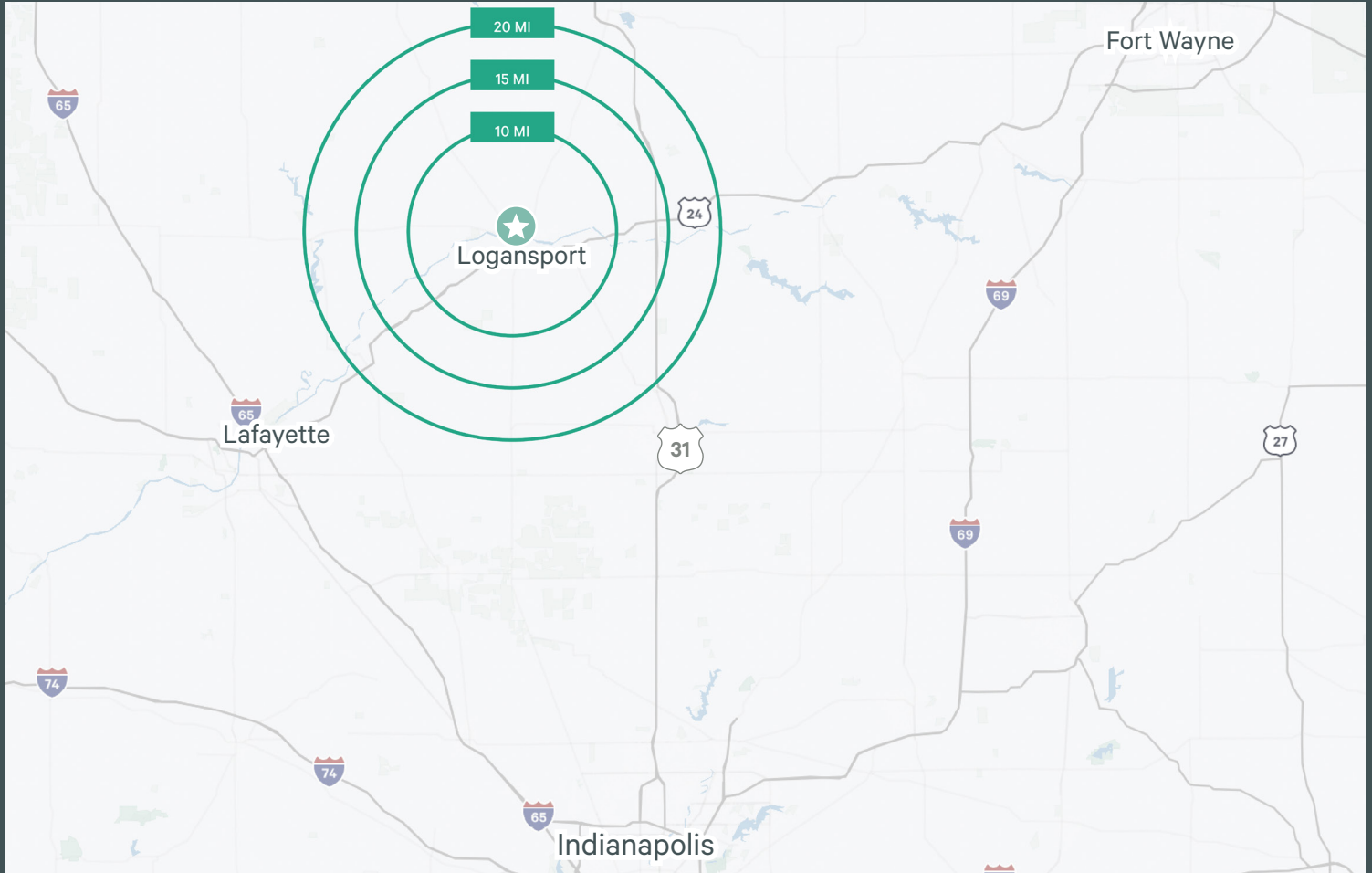
±19.85 Acres with B-4 Zoning (Cass County)



## Property Highlights:

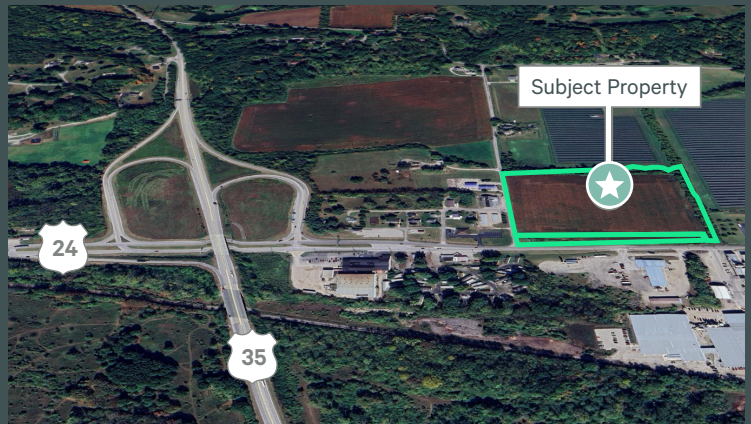
- + Located at the corner of West Market Street and Kiesling Road
- + Approximately 75 miles to/from Indianapolis
- + Easy access to the Hoosier Heartland Hwy (SR 24)
- + Sale Price: \$359,000 (\$18,085/AC)

# Property Location:



## Area Demographics (2025)

	10 Miles	15 Miles	20 Miles
Population	31,701	48,097	98,594
Household Income	\$76,028	\$77,944	\$77,462
Employees	16,323	19,990	3,255
Daytime Population	31,290	44,895	88,049



## Contact Us

**Jeff Merritt**

Vice President

+1 317 269 1040

jeff.merritt@cbre.com

[www.cbre.com/Indy](http://www.cbre.com/Indy)

© 2026 CBRE, Inc. All rights reserved. This information has been obtained from sources believed reliable but has not been verified for accuracy or completeness. CBRE, Inc. makes no guarantee, representation or warranty and accepts no responsibility or liability as to the accuracy, completeness, or reliability of the information contained herein. You should conduct a careful, independent investigation of the property and verify all information. Any reliance on this information is solely at your own risk. CBRE and the CBRE logo are service marks of CBRE, Inc. All other marks displayed on this document are the property of their respective owners, and the use of such marks does not imply any affiliation with or endorsement of CBRE. Photos herein are the property of their respective owners. Use of these images without the express written consent of the owner is prohibited.

