

LAND FOR SALE **+4.53 AC**



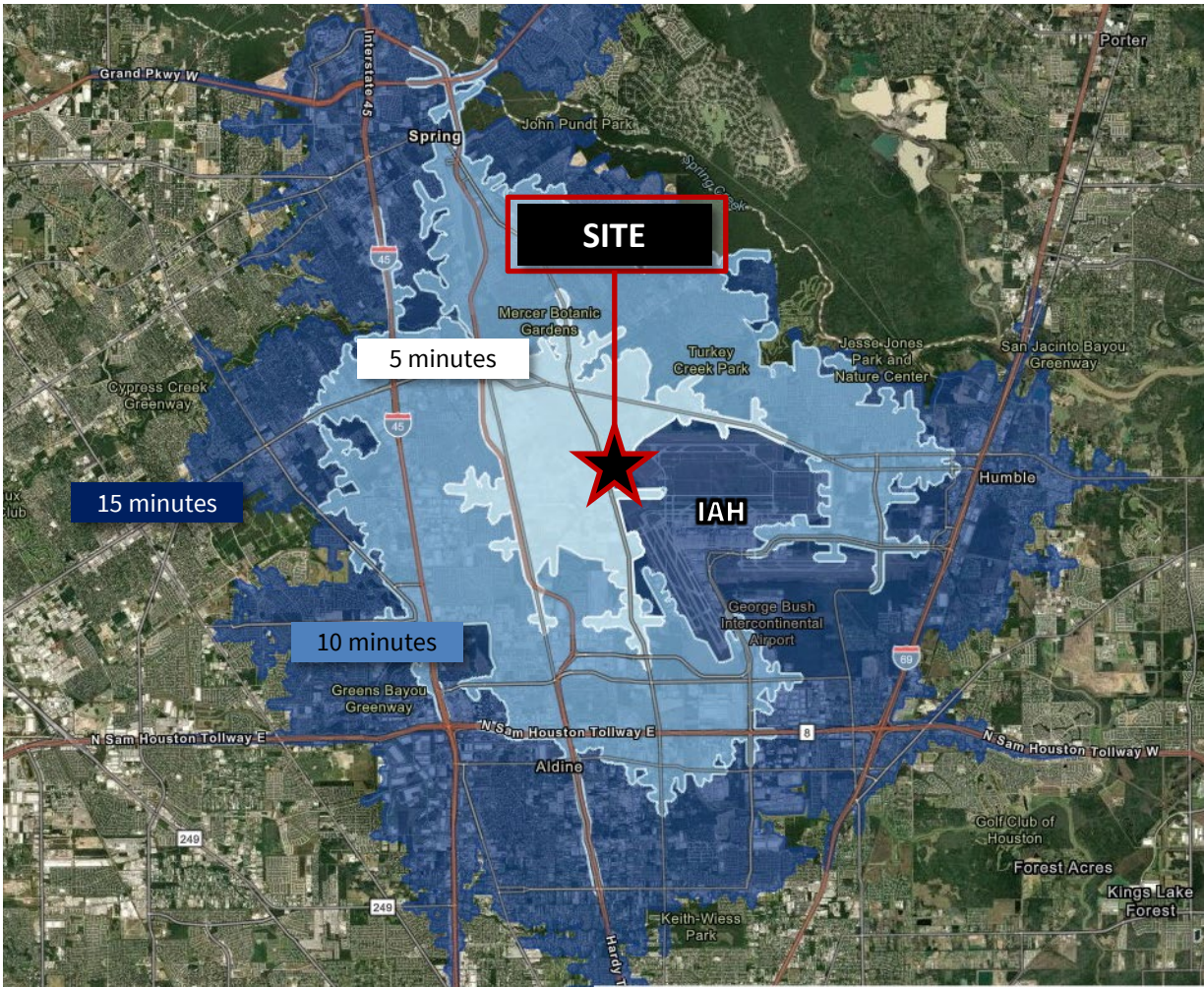
19719 ALDINE WESTFIELD | HOUSTON, TX 77073



Alex Kelly
Vice President
+1 713 425 1863
alexh.kelly@jll.com

Karina Weathers
Associate
+1 713 212 6702
karina.weathers@jll.com

COMMUTE & DEMOGRAPHICS



Location

19719 Aldine Westfield Rd

Size

±4.53 Acres

Site Details

- Close proximity to IAH
- ±242' frontage on Aldine Westfield
- Detention required
- No Floodplain
- Potential assemblage of ±7.75 AC Available when combined with neighboring tract

Utilities

Available from Northwood MUD 1

Surrounding Area

This site is located approx. 15 miles from The Woodlands and 8 miles from City Place master-planned communities, home to: ExxonMobil, HP Inc, HPe, ABS, Southwestern Energy and more. Situated amidst numerous new development projects, growing high-end residential neighborhoods, premium Class-A office, and multi-family properties, this location presents an ideal opportunity for future development.

Price

Contact brokers for pricing

Demographics

Population Summary	1-Mile	3-Mile	5-Mile
2023 Population	2,241	52,222	206,328
2023 Median Age	33.8	31.4	30.7
Average Household Income	\$72,631	\$77,278	\$70,259
Average Home Value	\$241,274	\$215,601	\$217,053

Drive Times

Locations	Minutes
George Bush Intercontinental Airport (IAH)	8
The Woodlands Mall	15
Woodlands Medical Center	20
Downtown Houston	20

