

Westview Business Center South

622 - 676 Mendelssohn Ave, Golden Valley, MN

Space Available
Golden Valley



Highlights

- Excellent location with easy access to Highways 169 & 55
- Abundant parking
- Dock high/drive-in loading
- 14' clear height in warehouse
- Flexible floor plans
- Local ownership

Available For Lease

Suite 622 - 3,770 SF •

Suite 636 - 1,860 SF •

Suite 648 - 2,006 SF •

Tour Today!

Building Features



Building Size:
62,733 SF



Lease Rates:
\$12.50 psf Office
\$7.25 psf Warehouse



Year Built:
1981



2026 Est. Tax/CAM:
\$3.35 psf Tax
\$2.60 psf CAM
\$5.95 psf Total



Clear Height:
14'

Leasing Info

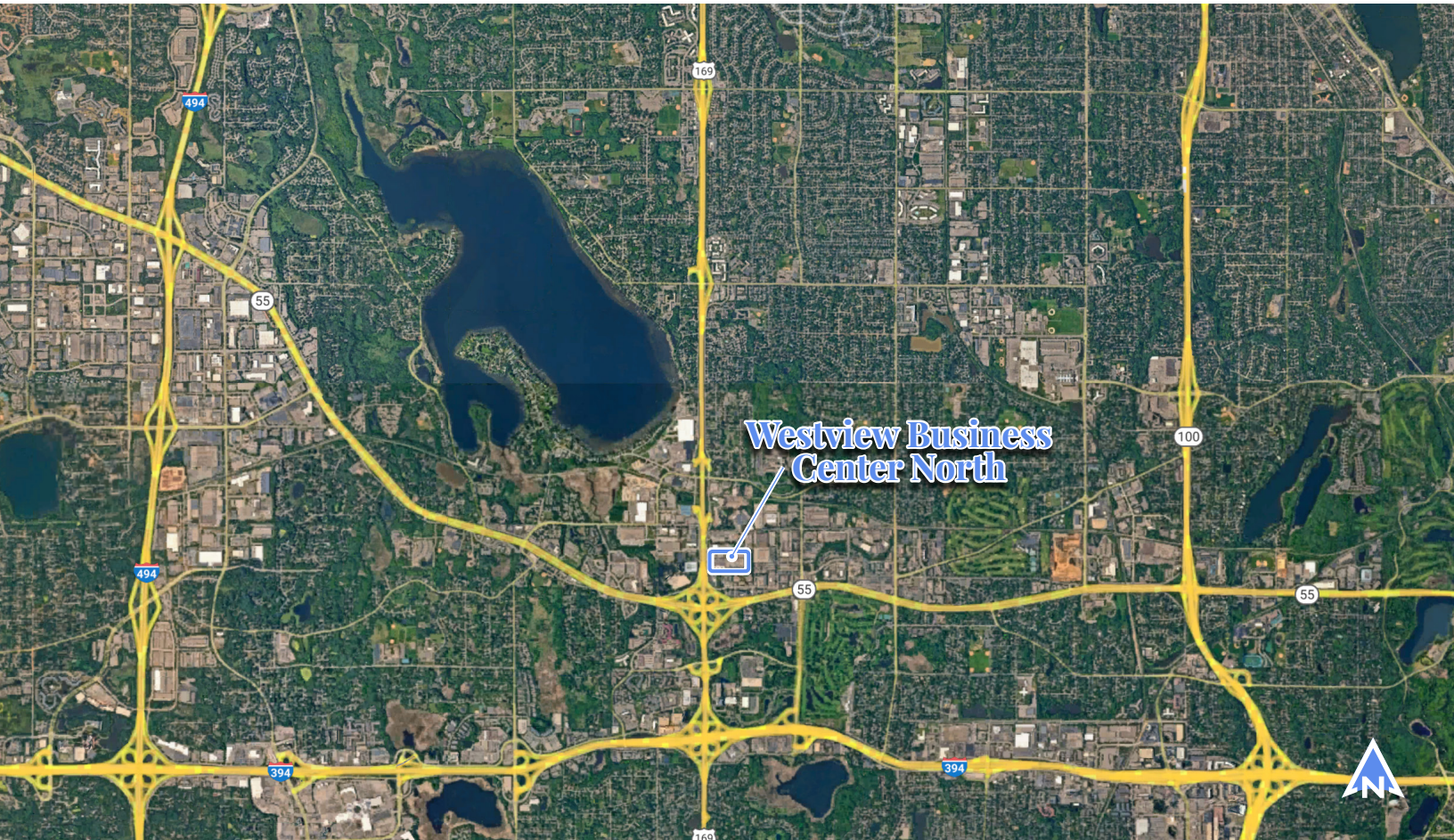
Bruce Hoberman
(763) 285-7251
bhoberman@hjdevelopment.com

hjdevelopment.com

HJ hj development

Westview Business Center South

622 - 676 Mendelssohn Ave, Golden Valley, MN



2655 Cheshire Lane North • Plymouth • MN • 55447 • hjdevelopment.com

Westview Business Center South

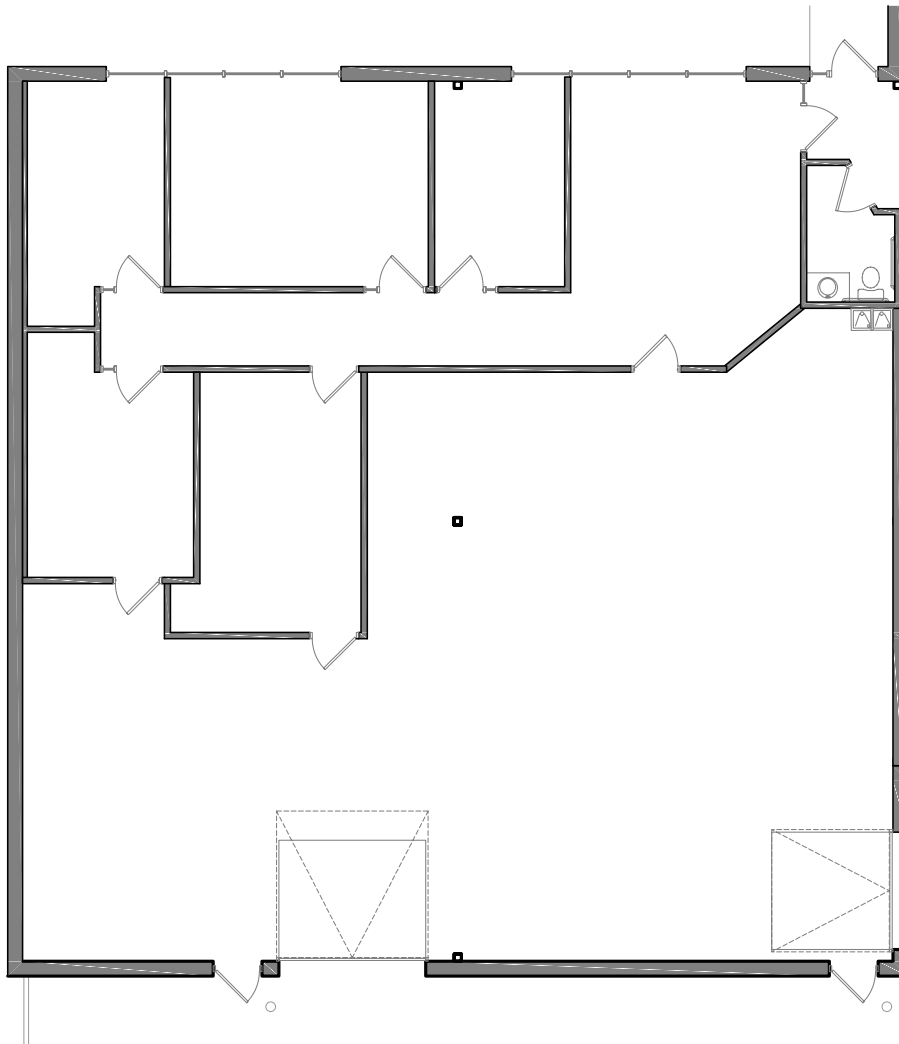
622 - 676 Mendelssohn Ave, Golden Valley, MN



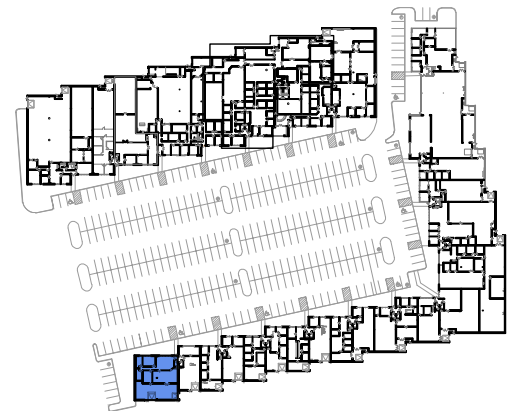
Space Available

Suite 622 3,770 SF | 1,612 SF Office | 2,158 SF Warehouse

Suite	Total SF	Office SF	Warehouse SF	Tech SF	Loading
622	3,770	1,612	2,158		2 drive-ins
636	1,860	1,436	424		1 drive-in
648	2,006	616	1,380		1 shared dock



Building Key:



2655 Cheshire Lane North • Plymouth • MN • 55447 • hjdevelopment.com

Westview Business Center South

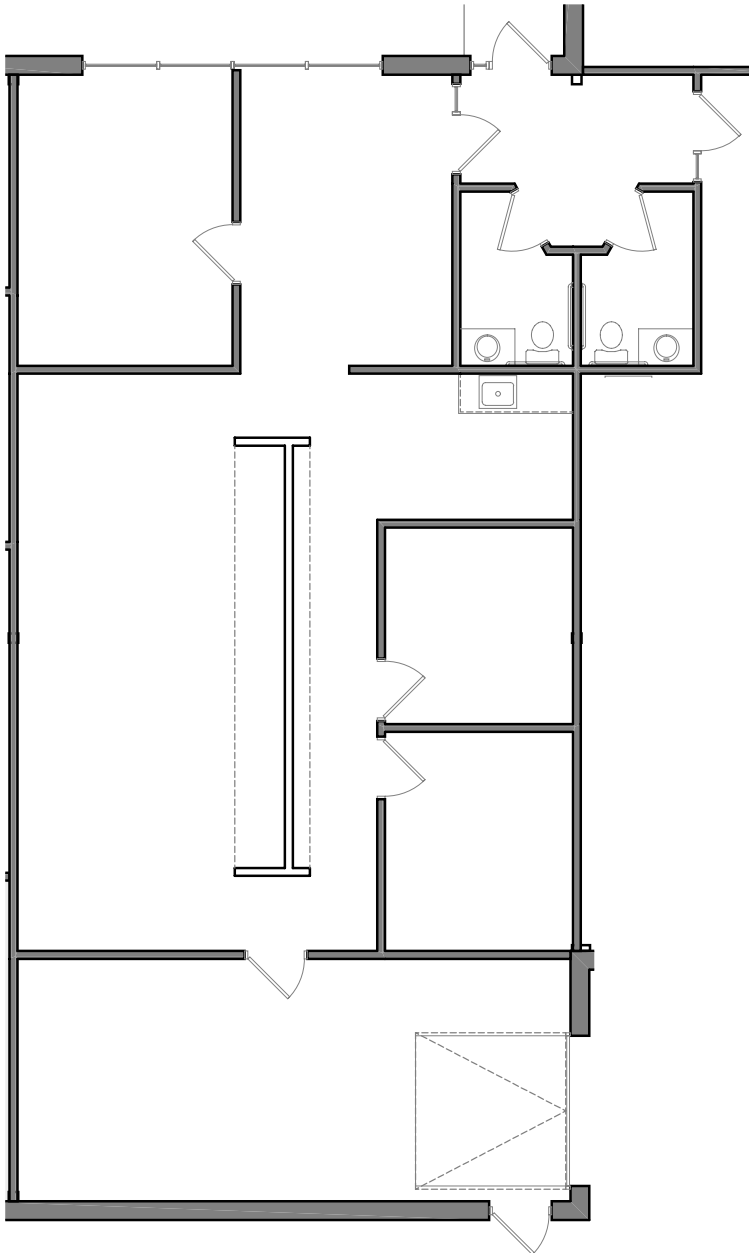
622 - 676 Mendelssohn Ave, Golden Valley, MN



Space Available

Suite 636 1,860 SF | 1,436 SF Office | 424 SF Warehouse

Suite	Total SF	Office SF	Warehouse SF	Tech SF	Loading
622	3,770	1,612	2,158		2 drive-ins
636	1,860	1,436	424		1 drive-in
648	2,006	616	1,380		1 shared dock



Building Key:



Westview Business Center South

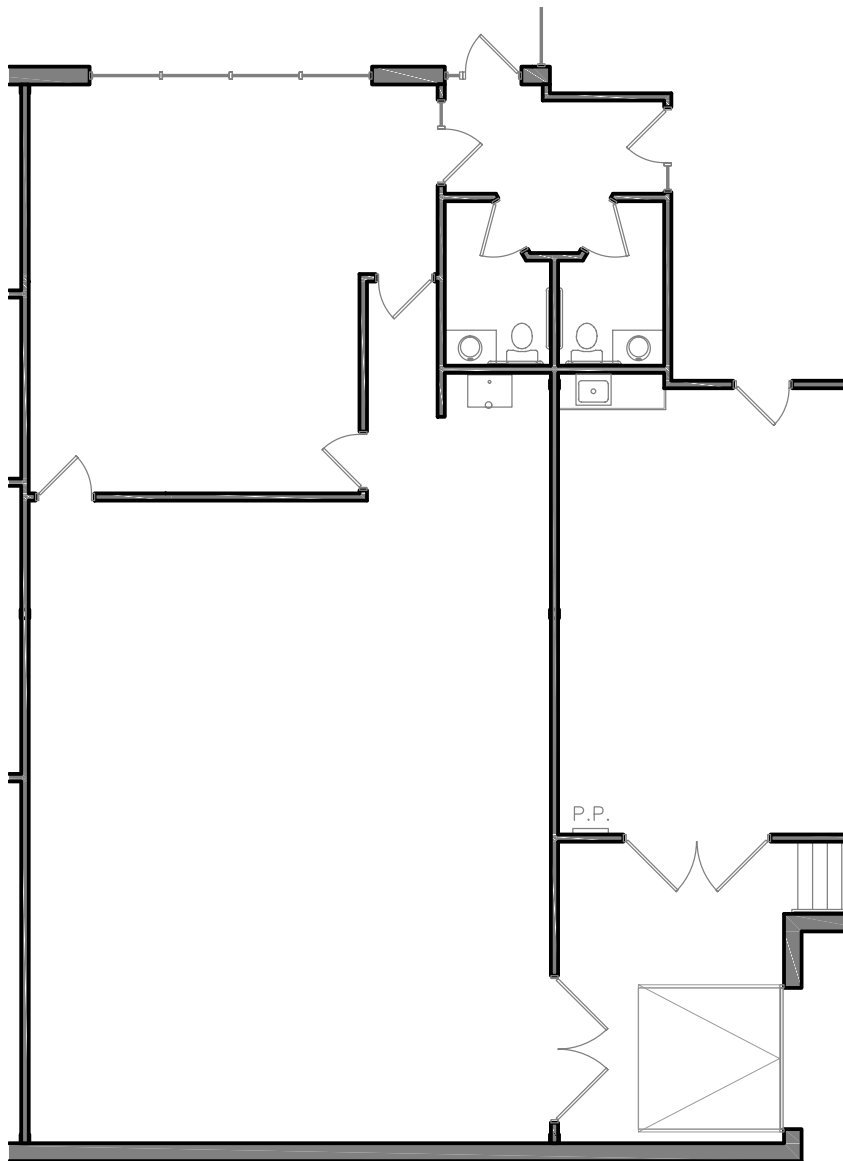
622 - 676 Mendelssohn Ave, Golden Valley, MN



Space Available

Suite 648 2,006 SF | 616 SF Office | 1,380 SF Warehouse

Suite	Total SF	Office SF	Warehouse SF	Tech SF	Loading
622	3,770	1,612	2,158		2 drive-ins
636	1,860	1,436	424		1 drive-in
648	2,006	616	1,380		1 shared dock



Building Key:

