

# For Lease

# 2514 Naomi Street Burbank | CA

---



Presented By:

Randy Rohrer  
818.244.3000  
randy@pacwestonline.com  
DRE#00672287

Scott Cox  
818.244.3000  
scott@pacwestonline.com  
DRE#01070703

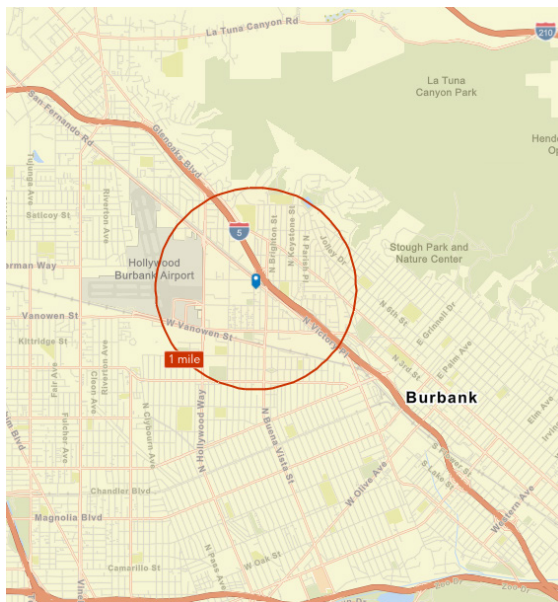
Christopher Rohrer  
818.624.1180  
chris@pacwestonline.com  
DRE#02018754

Ron Rohrer  
818.309.0628  
ron@pacwestonline.com  
DRE#01918399

 **Pacific  
West**  
Business Properties, Inc.

# Property Information

Available SF:	10,115 SF	› 20 Foot Clearance - Clear Span
Asking Price:	\$19,220 (\$1.90/SF)	› 2 Ground Loading Doors
Lease Type:	Industrial Gross	› 2,900 Square Feet of Offices
Power:	200 A; 240V; 3 Ph	› Concrete Block Construction
Zoning:	M-1	› Gated Parking Area
Parking:	22	› 200 Amps of 1 & 3 Phase
Built:	1986	



20,238

Population



2.6

Average Household Size

39.8

Median Age

\$98,065

Median Household Income

7.6%

No High School Diploma



18.2%

High School Graduate



28.5%

Some College/ Associate's Degree



45.7%

Bachelor's/Grad/ Prof Degree

## BUSINESS



1,124

Total Businesses



19,941

Total Employees

## EMPLOYMENT



White Collar

74.5%



Blue Collar

10.8%



Services

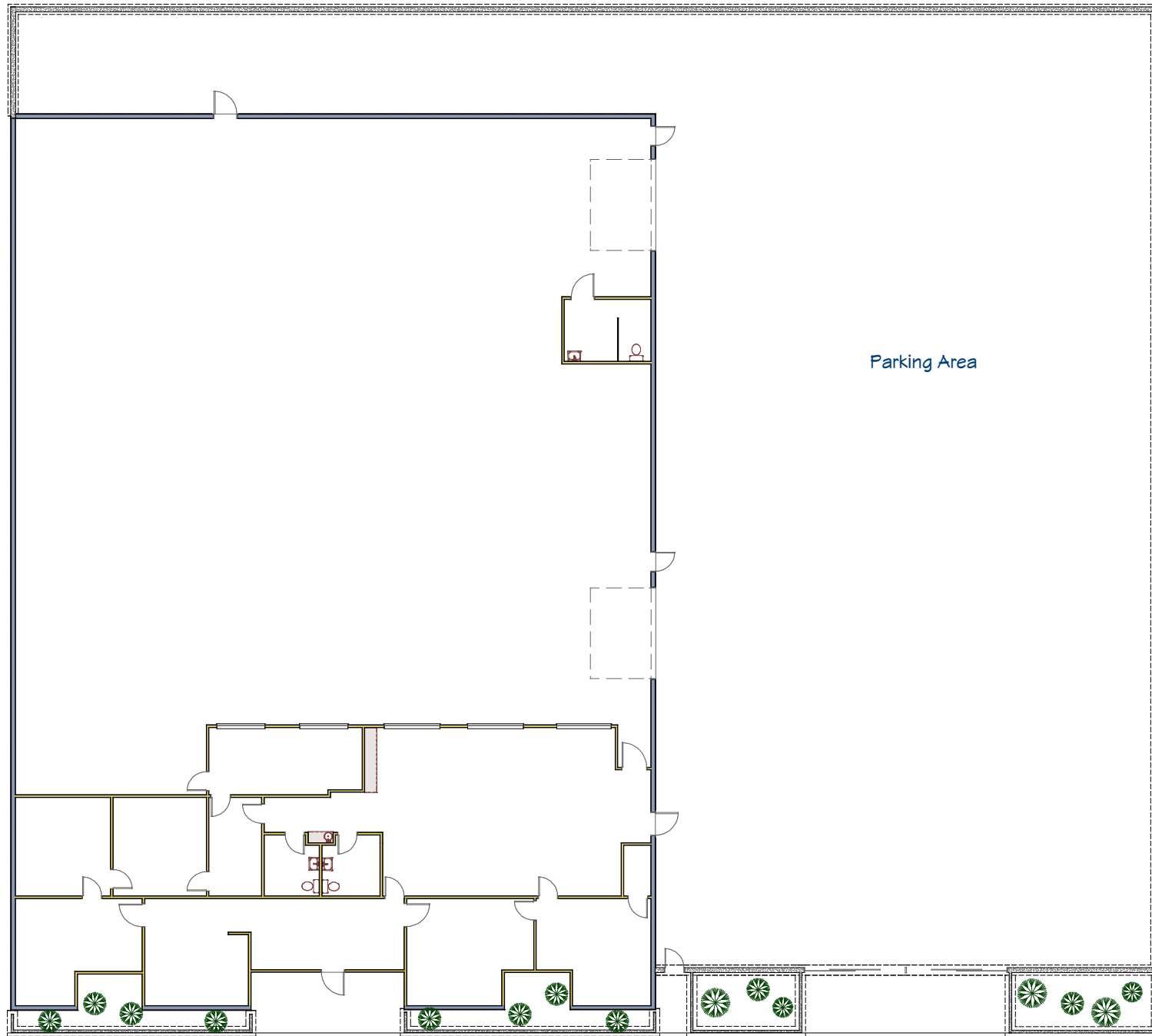
14.6%

5.7%

Unemployment Rate

The facts contained herein, while not guaranteed as to accuracy, are accurate to the best of our knowledge and belief.

# Floor Plan





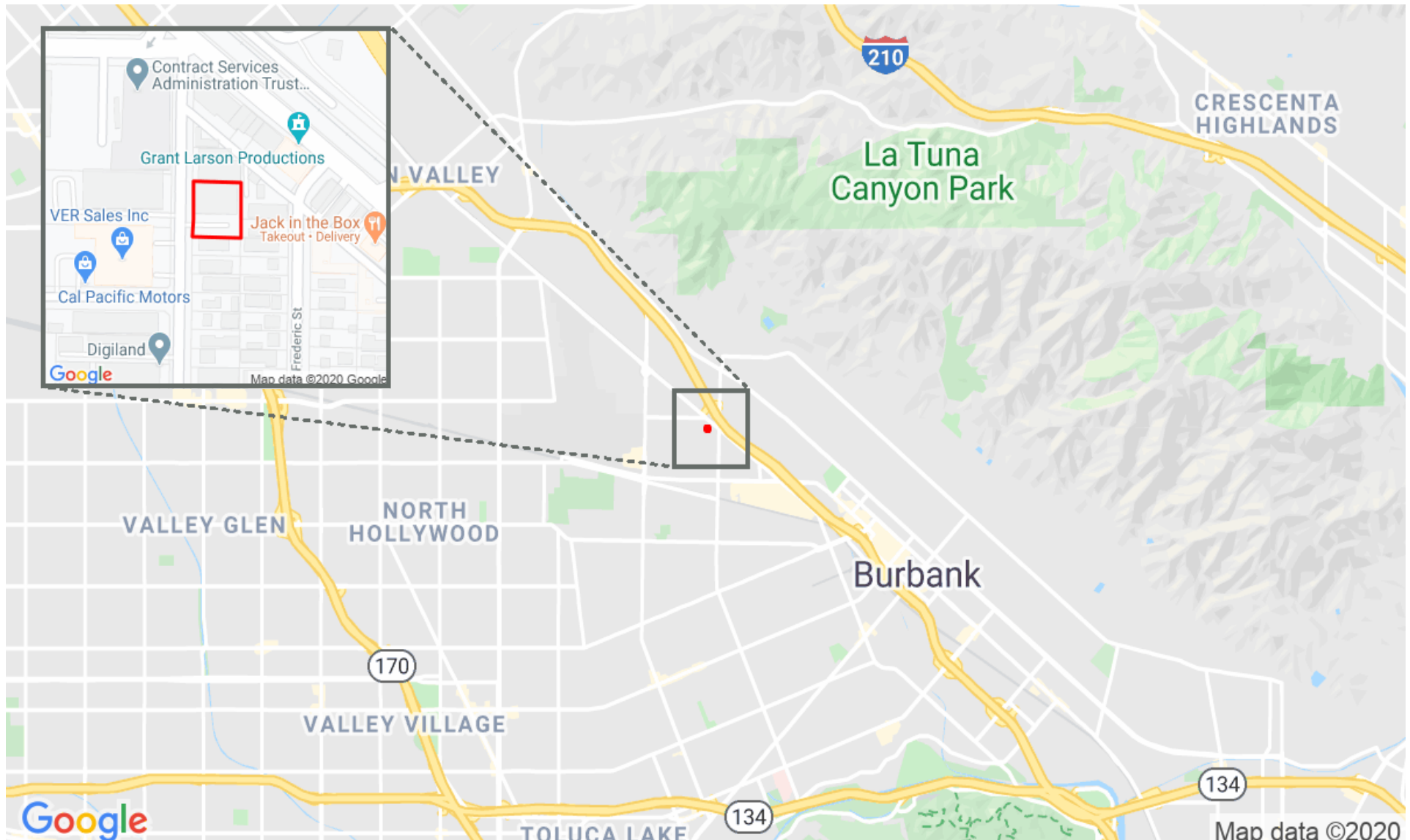
# Map Location

**2514 N Naomi St**



Pacific West Business Properties, Inc.

6624 San Fernando Road Glendale, CA 91201 | 818-244-3000





# Photos





# Photos

