

2200 Tech Ct, Woodstock, IL

AVAILABLE: 7,500 SF



Potential Outdoor Storage

## FOR LEASE: Rare Unit w/ Great Loading Options

AVAILABLE: 7,500 SF

OFFICE: 864 SF

CEILING: 18' – 21' Clear

LOADING: 1 Interior dock; 4 Drive-ins (10' x 10')

POWER: 400 Amps, 480V

PARKING: 24 Spots

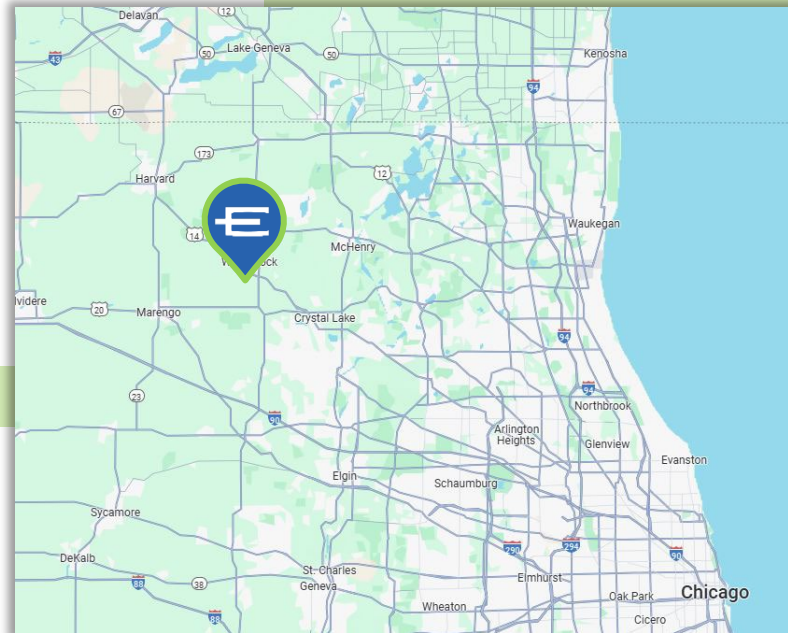
SPRINKLER: Yes

ZONING: M

AVAILABLE: September 1, 2025

LEASE RATE: \$9.95 PSF MG ~~\$10.95 PSF MG~~

- **RATE REDUCED!**
- **Functional Loading Options**
- **Potential outdoor storage**
- **Convenient Access to Route 47**



**ENTRE**  
Commercial Realty LLC

Brain Bocci, SIOR  
847-310-4296  
bbocci@entrecmercial.com

Sam Deihls  
224-202-6290  
sdeihls@entrecmercial.com

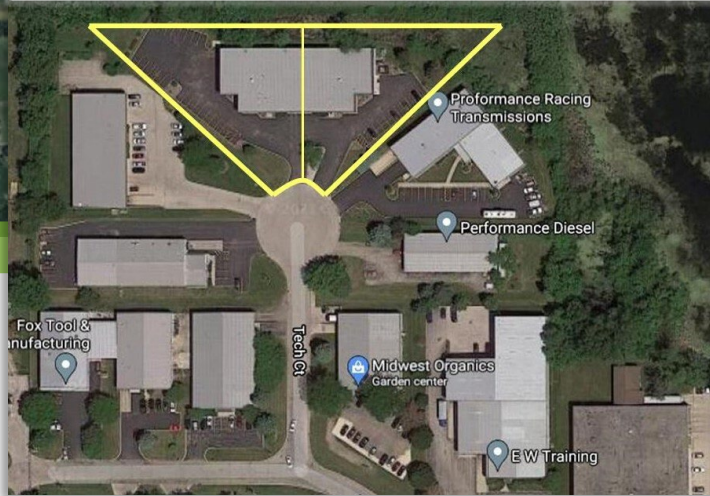
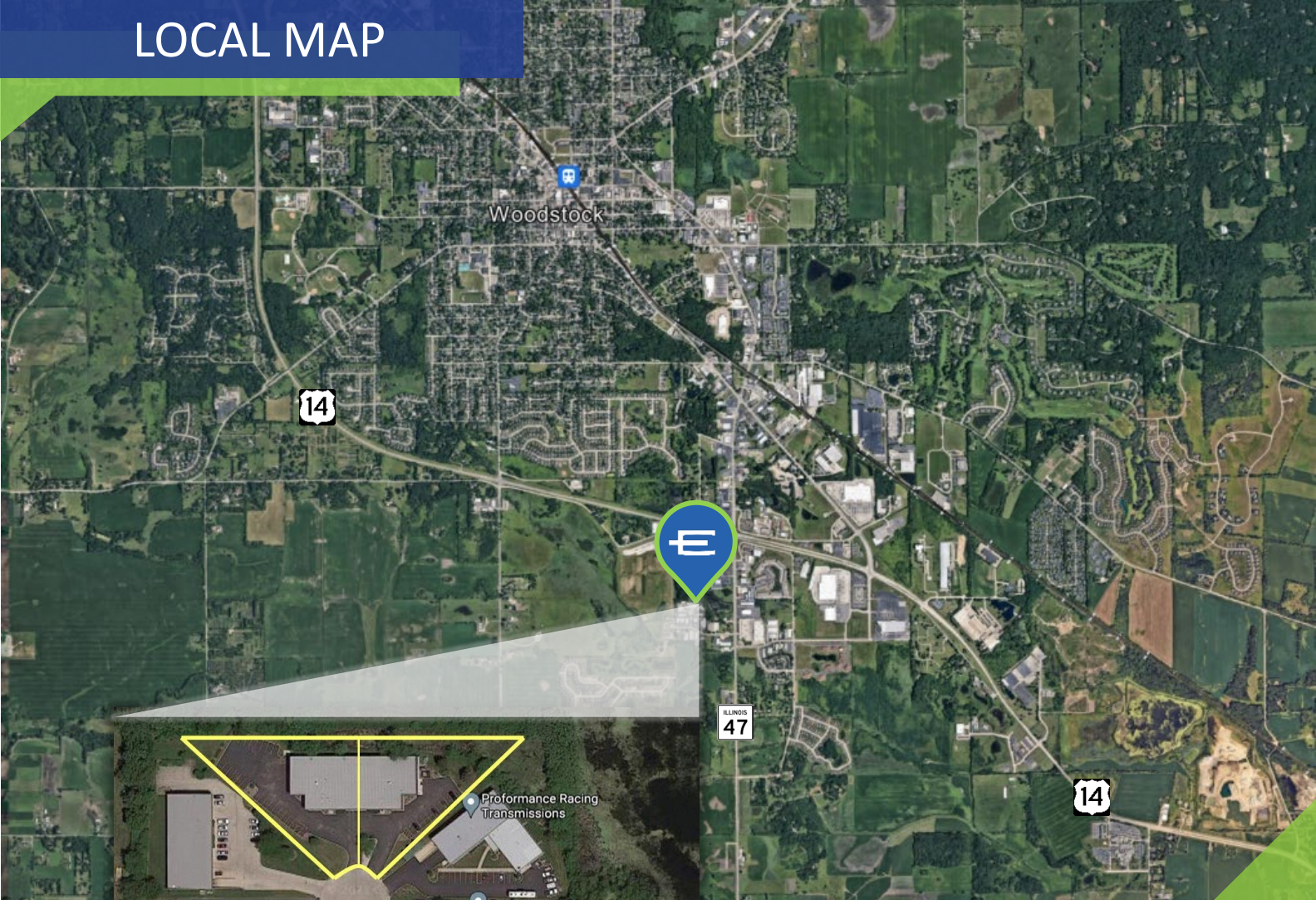
John M. Joyce  
847-612-0464  
jjoyce@entrecmercial.com



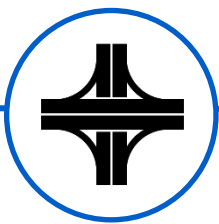
# PHOTOS



# LOCAL MAP



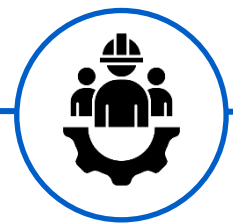
SCAN/CLICK FOR MAP VIEW



Near US 14 and Route 47



Diverse Local Economy



Skilled Labor Force

**ENTRE**  
Commercial Realty LLC

Brain Bocci, SIOR  
847-310-4296  
bbocci@entrecmercial.com

Sam Deihls  
224-202-6290  
sdeihls@entrecmercial.com

John M. Joyce  
847-612-0464  
jjoyce@entrecmercial.com

www.entrecmercial.com | 3550 Salt Creek Lane, Suite 104, Arlington Heights, IL 60005

The information contained herein is from sources deemed reliable but is submitted subject to errors, omissions and to change of price or terms without notice.