

FOR LEASE

First Floor Corner
Office Space Downtown



1300 Santa Barbara Street, Suite A, Santa Barbara, CA 93101



Jim Turner

805.724.0557

Jim@JTrealstategroup.com

DRE License: #00970829

JTrealstategroup.com

Santa Barbara, CA



Property Summary

This corner office space consists of a reception area; open work area; 3 private offices; conference room and private restroom. Office has eight entry doors to the suite. Any existing furniture may be used by the tenant at no charge.

Lease Rate:	<i>\$2.25 Per Sq. Ft Triple Net</i>
Triple Net Expenses:	<i>\$0.50 Per Sq. Ft</i>
Size:	<i>2,084 SF</i>
HVAC:	<i>Yes</i>
Parking:	<i>4 reserved parking spaces</i>
Restrooms:	<i>1 private restroom and 2 adjacent common restrooms</i>
Available:	<i>Now</i>
Furniture:	<i>Tenant may use any existing furniture at no additional cost</i>

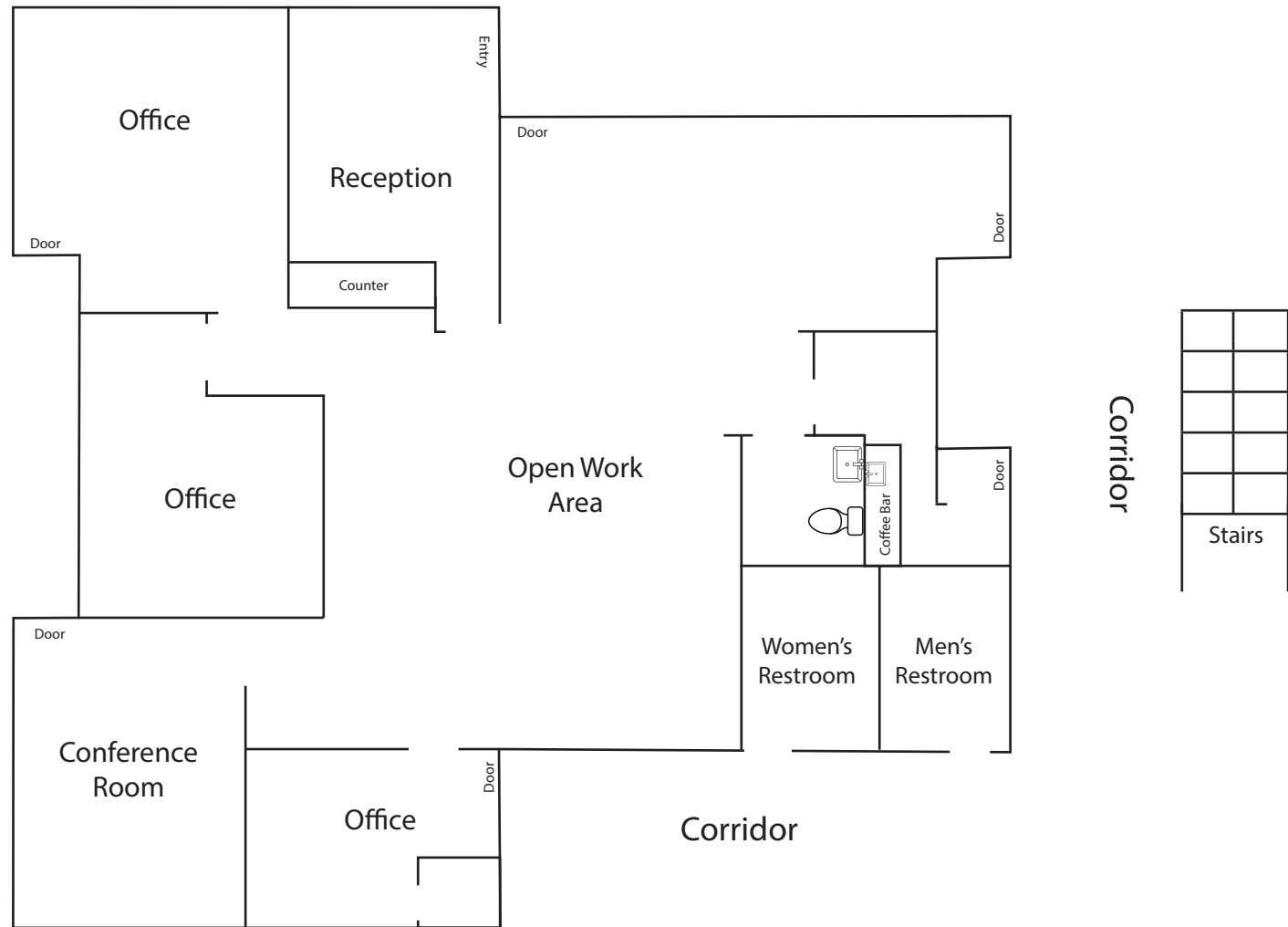


Jim Turner
805.724.0557
Jim@JTrealstategroup.com
DRE License: #00970829

JTrealstategroup.com
Santa Barbara, CA

Santa Barbara Street

Victoria Street



Jim Turner
805.724.0557
Jim@JTrealstategroup.com
DRE License: #00970829

JTrealstategroup.com
Santa Barbara, CA



Jim Turner
805.724.0557
Jim@JTrealstategroup.com
DRE License: #00970829

JTrealstategroup.com
Santa Barbara, CA