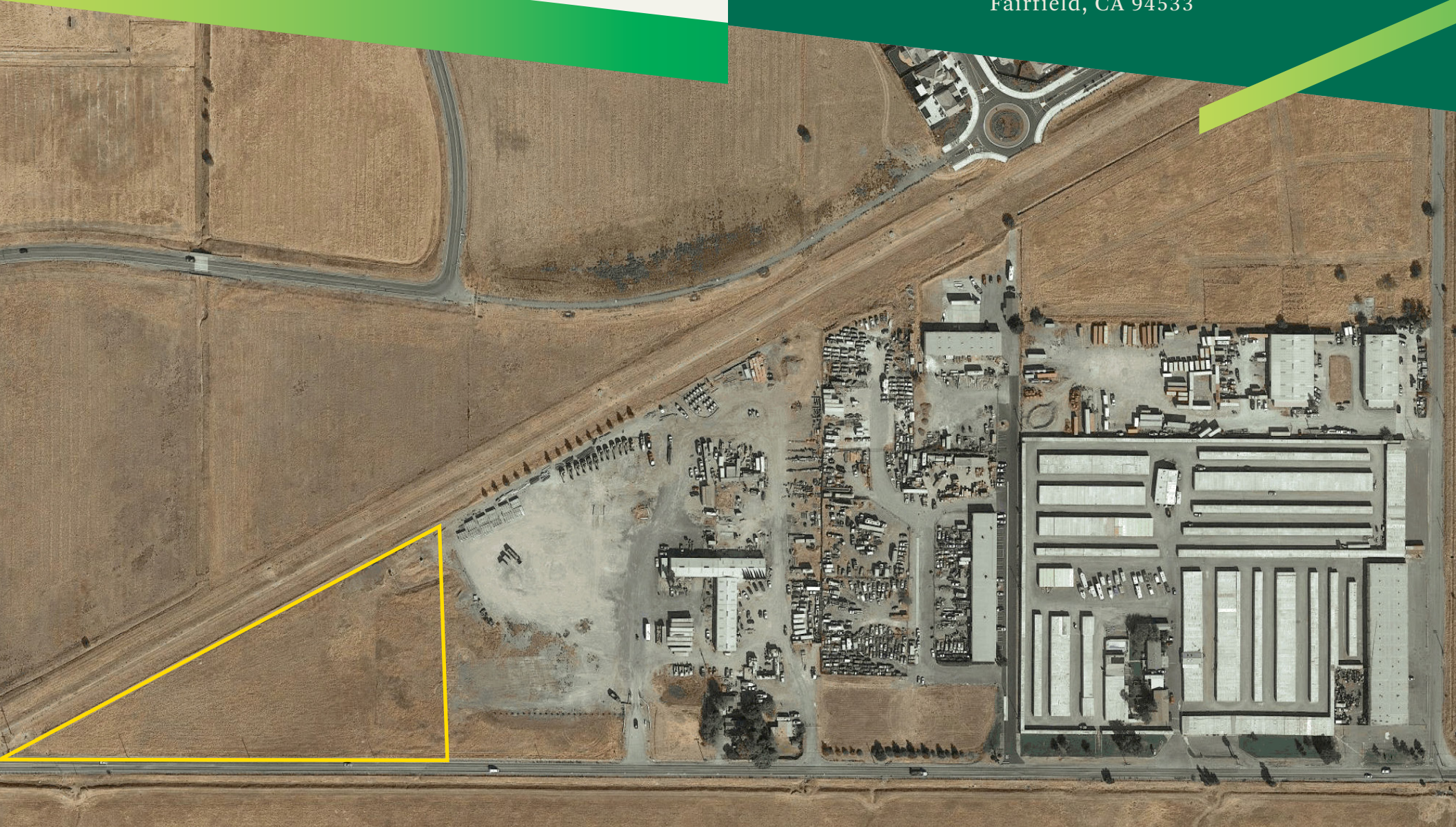


FOR LEASE

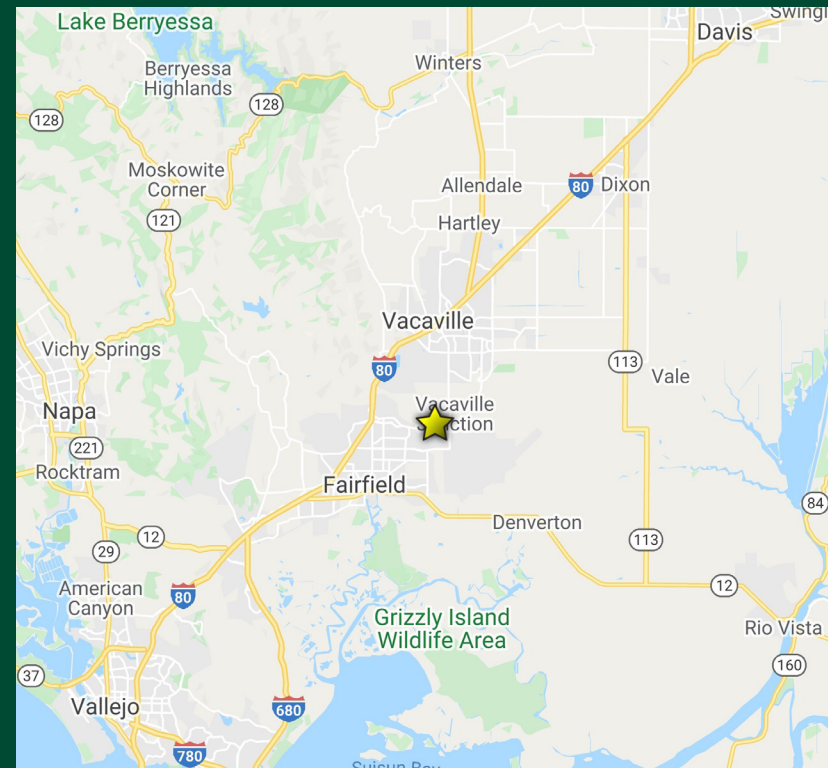
2214-2216 CEMENT HILL ROAD

Fairfield, CA 94533



HIGHLIGHTS

- + ±5.0 Acre Industrial Yard For Lease
- + Industrial Uses Permitted, Including Parking or Equipment and Material Storage
- + Improvements to Suit
- + Great Access to I-80
- + Pricing – Call Broker
- + Divisible



PLEASE CONTACT:

GREG SMYTH

First Vice President
+1 925 296 7717
greg.smyth@cbre.com
Lic. 01131484

JOHN SALAMIDA

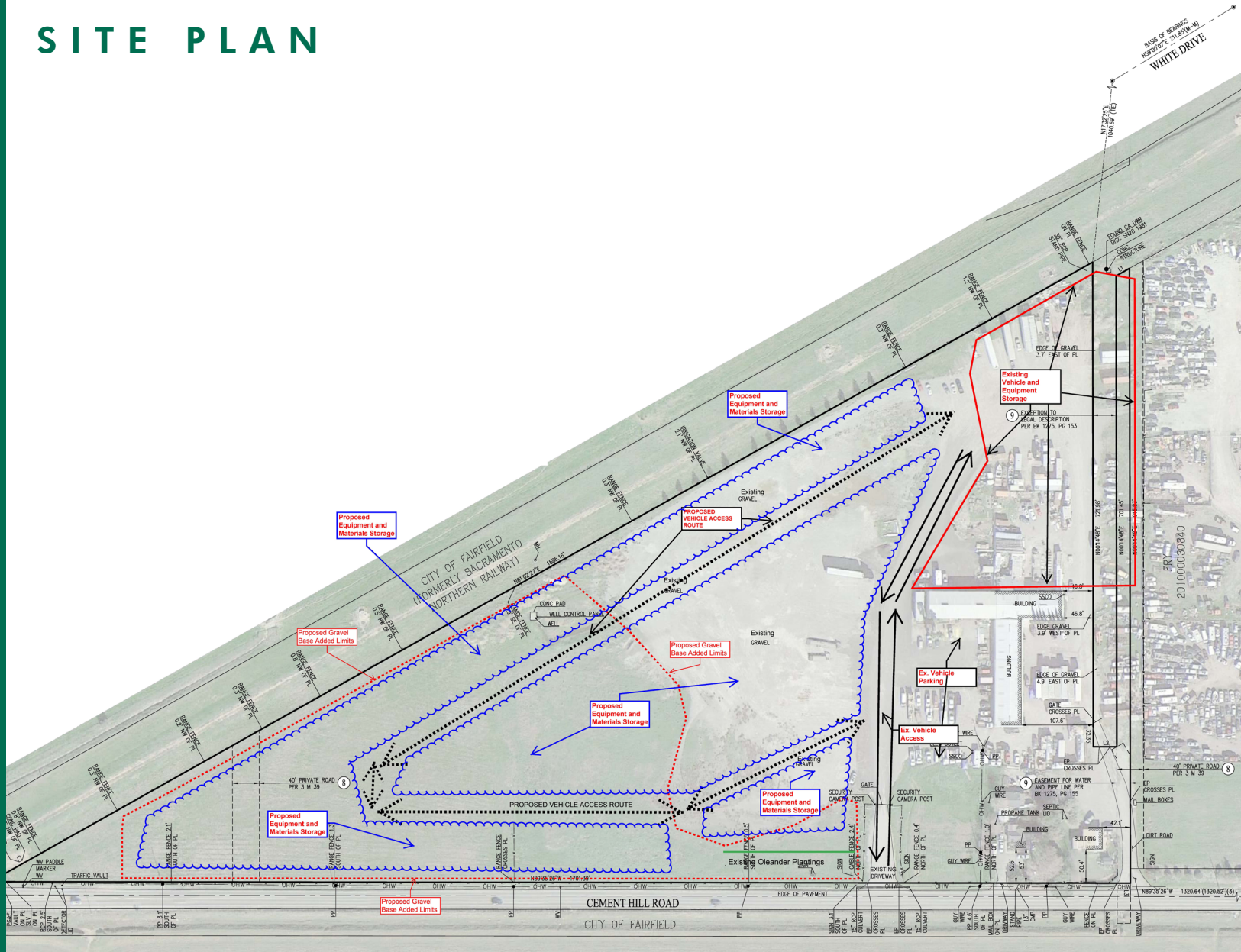
First Vice President
+1 925 817 9055
Lic. 01822505

CBRE, INC.

2175 N. California Blvd.
Suite 300
Walnut Creek, CA
+1 925 296 7700

© 2023 CBRE, Inc. All rights reserved. This information has been obtained from sources believed reliable, but has not been verified for accuracy or completeness. You should conduct a careful, independent investigation of the property and verify all information. Any reliance on this information is solely at your own risk. CBRE and the CBRE logo are service marks of CBRE, Inc. All other marks displayed on this document are the property of their respective owners, and the use of such logos does not imply any affiliation with or endorsement of CBRE. Photos herein are the property of their respective owners. Use of these images without the express written consent of the owner is prohibited.

SITE PLAN



VICINITY MAP
NOT TO SCALE

LEGEND

	BOUNDARY LINE
	CENTERLINE
	EASEMENT LINE
	ADJACENT LINE
	OVERHEAD WIRES
	FENCE LINE
	(M-M) MONUMENT TO MONUMENT
	NE NORTHEAST
	NW NORTHWEST
	SE SOUTHEAST
	SW SOUTHWEST
	CONC CONCRETE
	EP EDGE OF PAVEMENT
	MH MANHOLE
	PL PROPERTY LINE
	PP POWER POLE
	RCP REINFORCED CONCRETE PIPE
	SLV STREET LIGHT VAULT
	SSCO SANITARY SEWER CLEAN OUT
	WV WATER VALVE

PROPOSED EQUIPMENT AND MATERIALS STORAGE LIST:

- Storage of job trailers
- Conex boxes
- Construction materials and lumber (K-rails, Shoring, Steel Beams, Steel Plates)
- Vehicle and equipment parking (Water Buffaloes, graders, backhoes)

PROPOSED SITE PLAN 2214 CEMENT HILL ROAD

CITY OF FAIRFIELD SOLANO COUNTY CALIFORNIA

SCALE: 1" = 60'

