



MARKETPLACE OFFICE

110 2nd St S, Waite Park, MN



Sam Johnson

Commercial Broker

C: 320-420-1177

E: sam@parcel.properties

Tanner Nordlund

Commercial Agent

C: 320-828-0395

E: tanner@parcel.properties

Property Summary:

At Marketplace, we offer a variety of office spaces designed to fit both your needs and your budget. Whether you're seeking a spacious, windowed office or a private suite with a ground-level entrance, we have affordable options to suit any requirement. No matter your budget, there's a space at Marketplace that's perfect for you.

Available Suites			
Suite	Location	Size	Monthly rate
138	Ground level	1,618 sf	\$3,370
201	lvl 2	560 sf	\$1,400
218	lvl 2	273 sf	\$682
226	lvl 2	261 sf	\$668
227	lvl 2	305 sf	\$762
300	lvl 3	480 sf	\$1,036
302	lvl 3	961 sf	\$2,082
303	lvl 3	505sf	\$1,094

Property Features:

- Elevator
- Building conference room
- Ample parking
- Signage available
- Centrally located near restaurants, shopping, and services.

Location



Suite: 138



Suite 138:

- Ground Level
- Private entrance
- 1,618 sf
- \$3,370 monthly

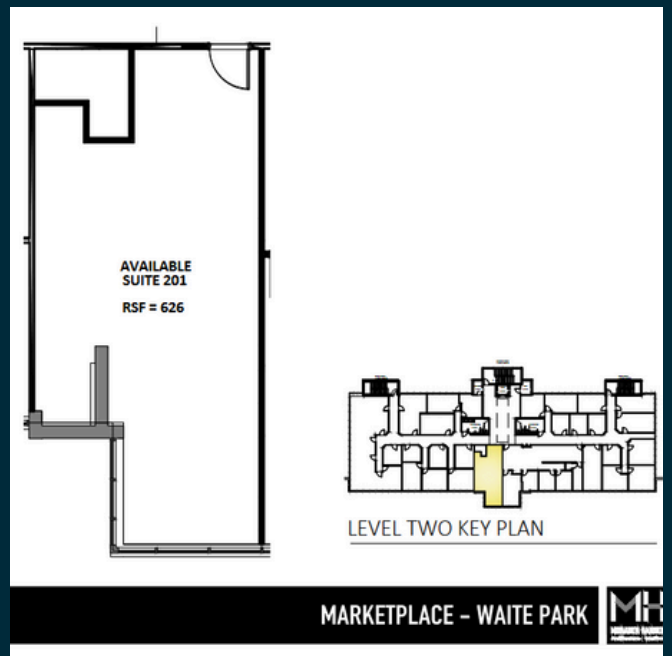


Suite: 201

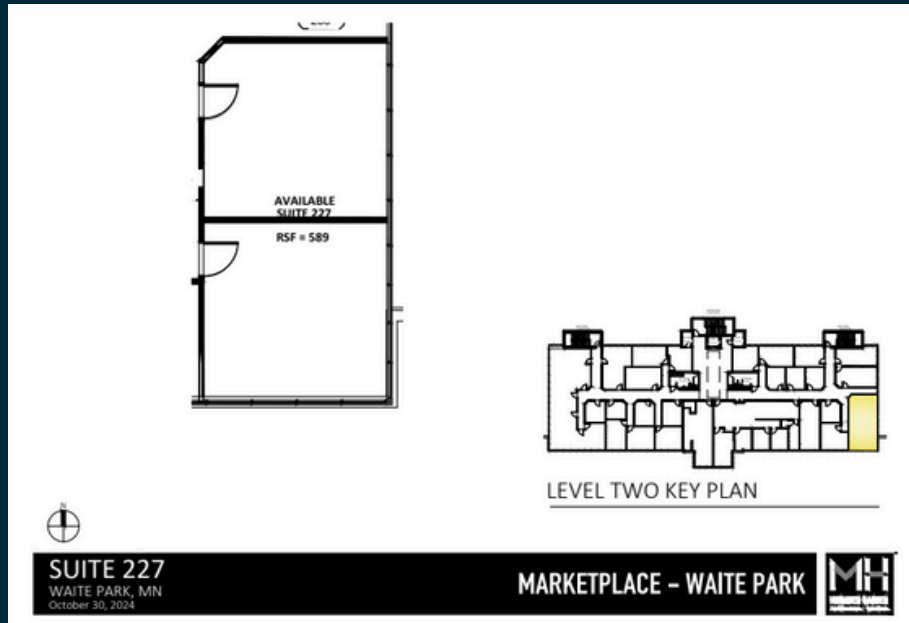


Suite 201:

- Reception
- Private office
- Second floor
- 560 sf
- \$1,400 monthly



Suites: 226, 227



Suite 226:

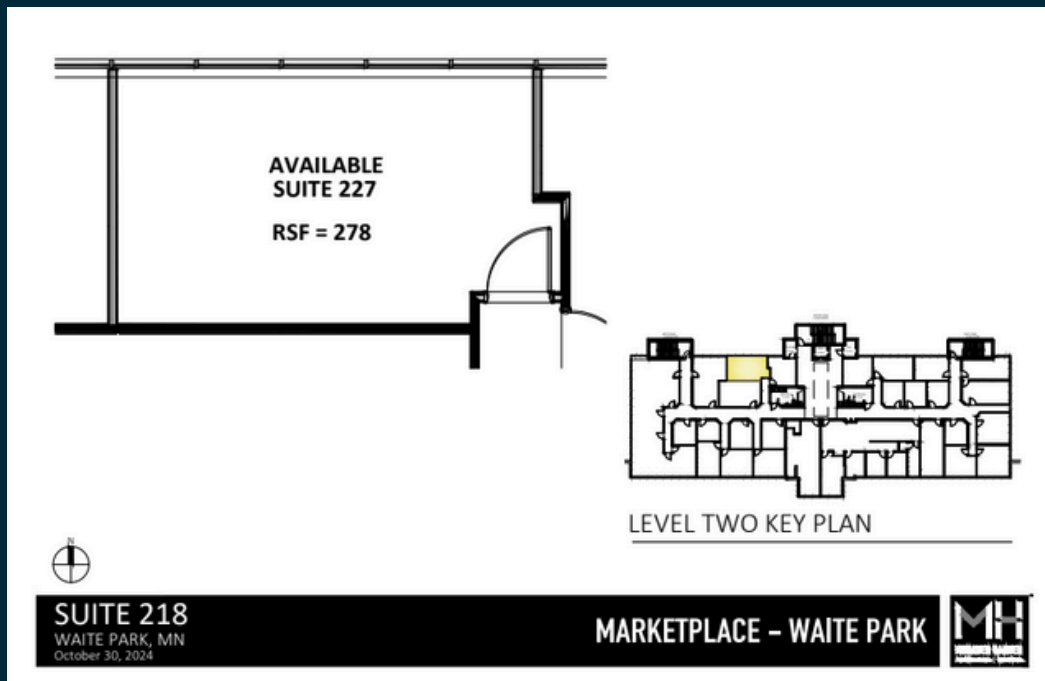
- Natural light
- Open
- 261 sf
- \$668 monthly



Suite 227:

- Natural light
- Open
- 305 sf
- \$762 monthly

Suite: 218



Suite 218:

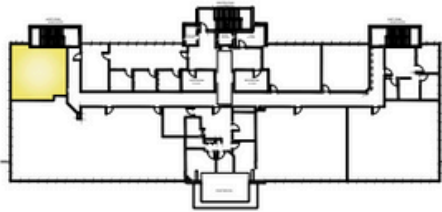
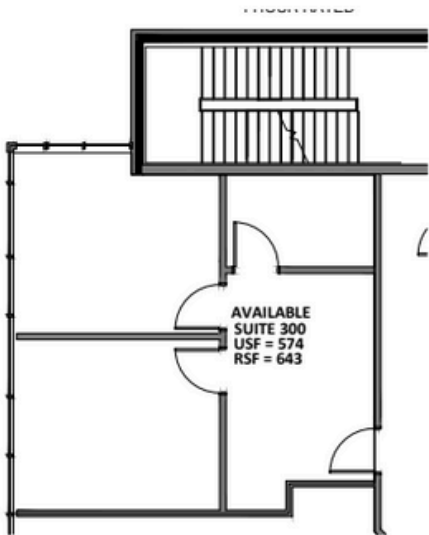
- Natural light
- 273 sf
- \$682 monthly

Suite: 300



Suite 300:

- Natural light
- Open
- 480 sf
- \$762 monthly



LEVEL THREE KEY PLAN

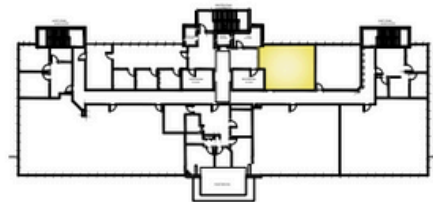
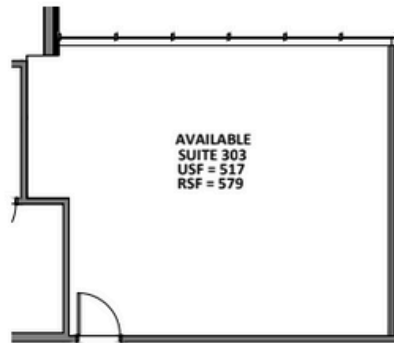


SUITE 300
WAITE PARK, MN
October 30, 2024

MARKETPLACE - WAITE PARK



Suite: 303



SUITE 303
WAITE PARK, MN
October 30, 2024

MARKETPLACE - WAITE PARK



Suite 303:

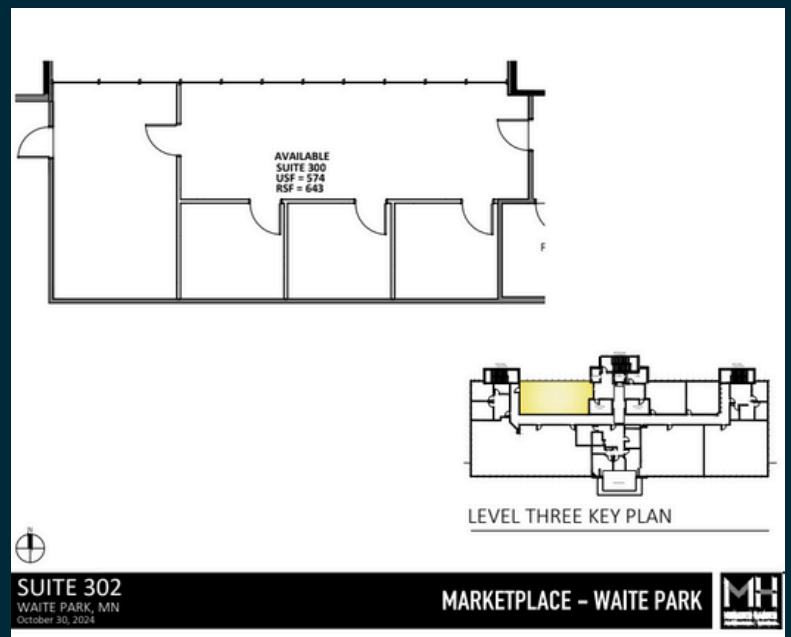
- Two private, windowed offices
- 505sf, \$1,094 per month

Suite: 302



Suite 302:

- Many windows
- Being renovated
- 961 sf
- \$2,082 monthly



Common area



Amenities:

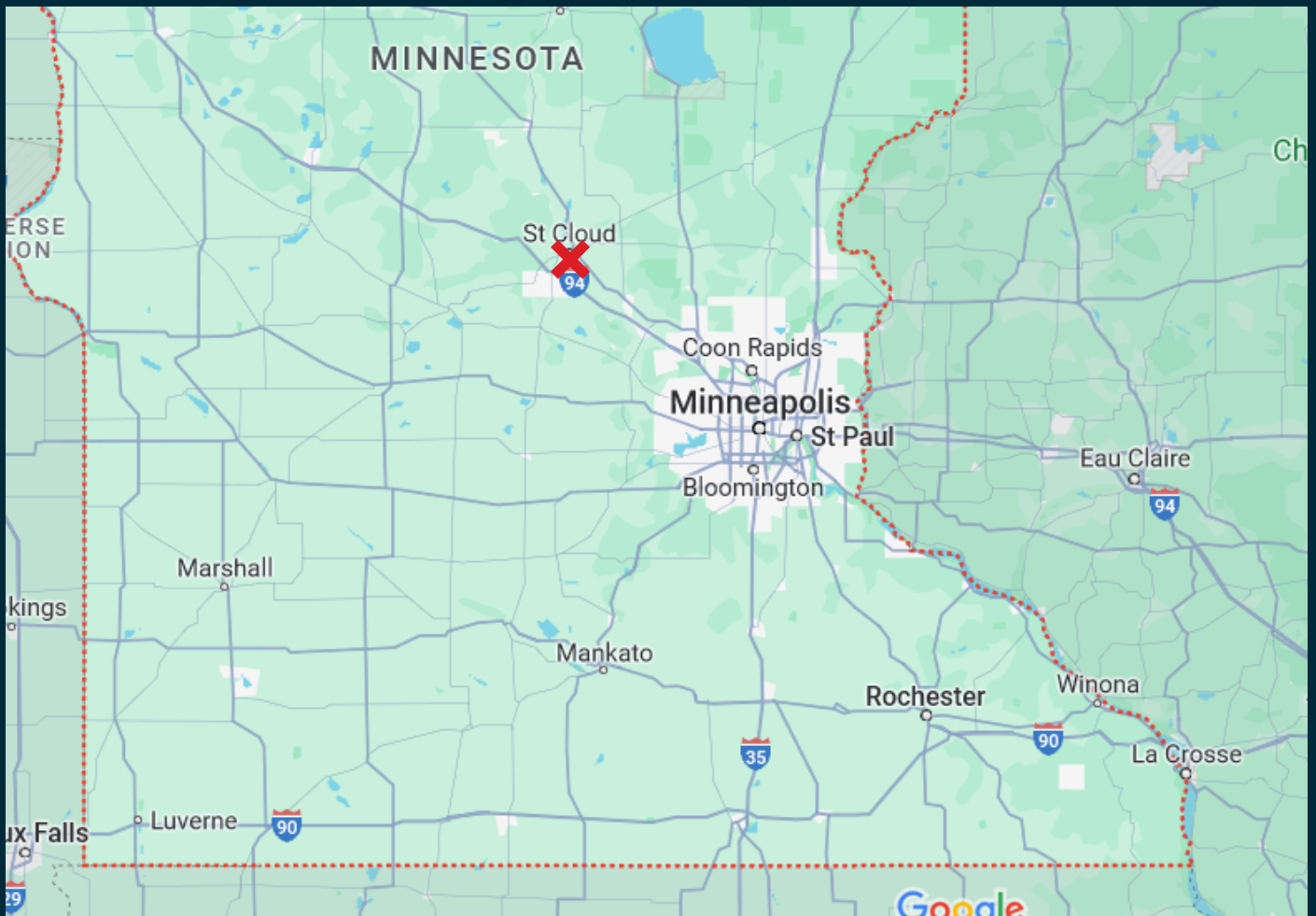
- Break room
- Conference room
- Lots of parking
- Updates to common areas coming soon!



Exterior



Location



Parcel
REAL ESTATE

**Thank
You!**

**Let's Get
In Touch**

Contact us:

sam@parcel.properties
320-420-1177

tanner@parcel.properties
320-828-0395

Visit our website:
Parcel.Properties