



416 WEST 13TH STREET

MEATPACKING DISTRICT
NEW YORK CITY



AVISON
YOUNG

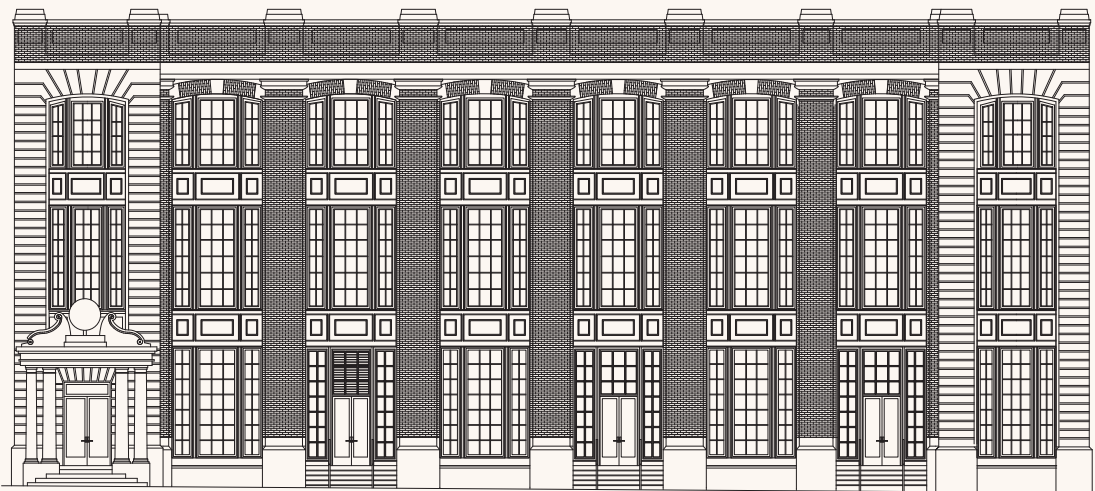


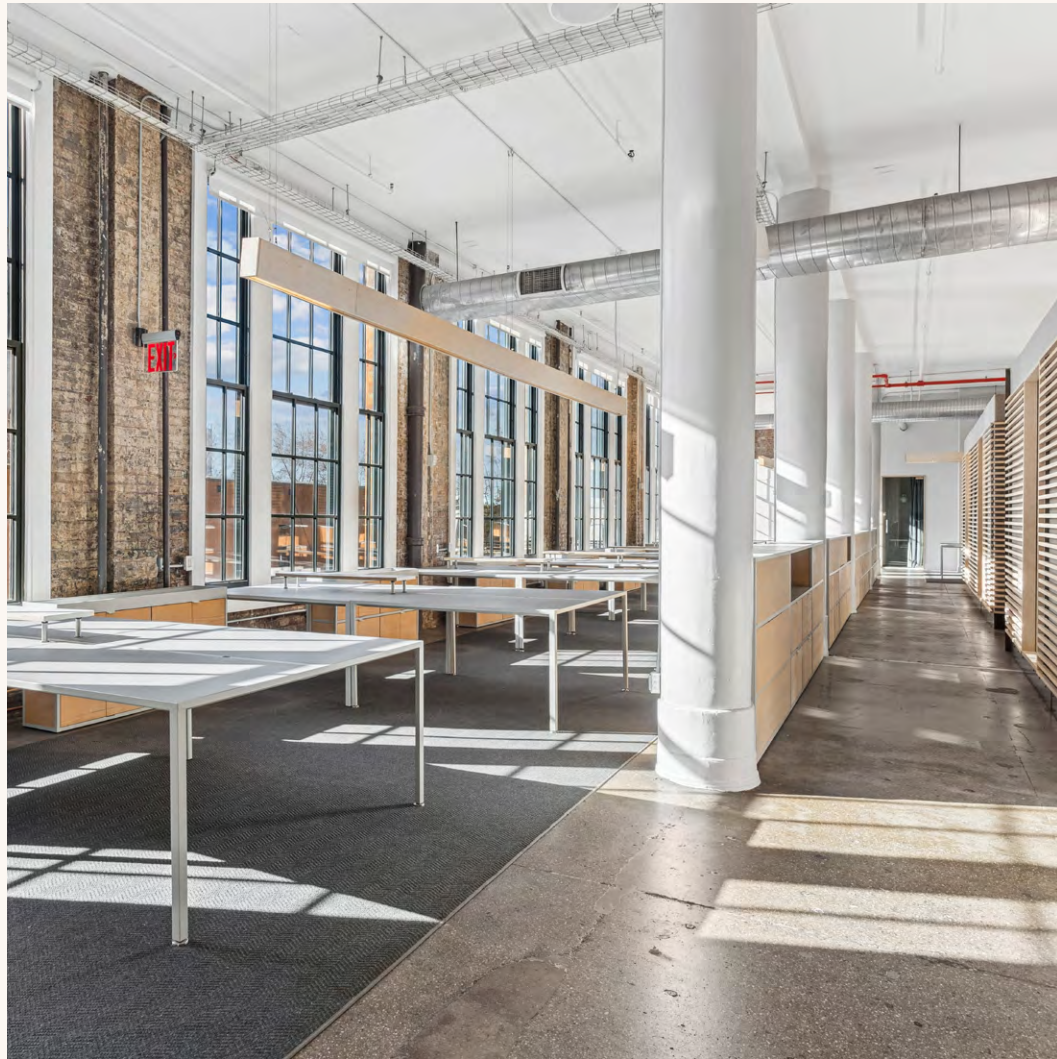
P·F·COLLIER·&·SON·

416 WEST 13TH STREET

416 West 13th Street is a distinguished, neoclassical commercial building situated between Ninth Avenue and Washington Street, boasting 144,000 sf of sun-drenched office and retail spaces in the heart of the iconic Meatpacking District. Once home to the renowned publishing house P.F. Collier & Son, the landmarked property underwent a massive renovation in 2012 to

convert it into a striking boutique office building with ground floor retail that opens onto the picturesque cobblestone streets on both the north and south sides. The modernized lobby, windows and façade preserve the building's architectural charm and industrial allure, with added amenities to include a tenant-only conferencing center and lounge space.





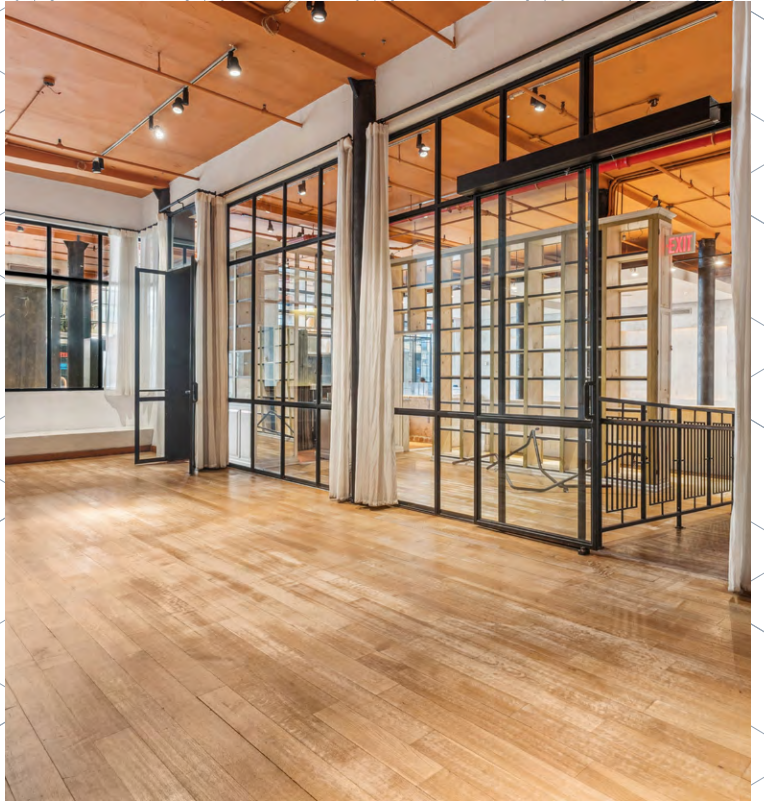
Owned, occupied, and operated by Greenway Mews Realty, the building is meticulously maintained to the highest standards. Their dedicated team provides exceptional service, available 24/7 to address tenant needs and ensure a seamless, productive environment for the innovative companies that call 416 West 13th Street home.

“When I think of our building I think: Historical, but impeccably clean. Fashionable. Exclusive. Desired. Impressive. Luxury. Safe. Chic. I am so proud to be a tenant here and I love getting to show off my space.” - Current Tenant at 416 West 13th Street









Ground Floor

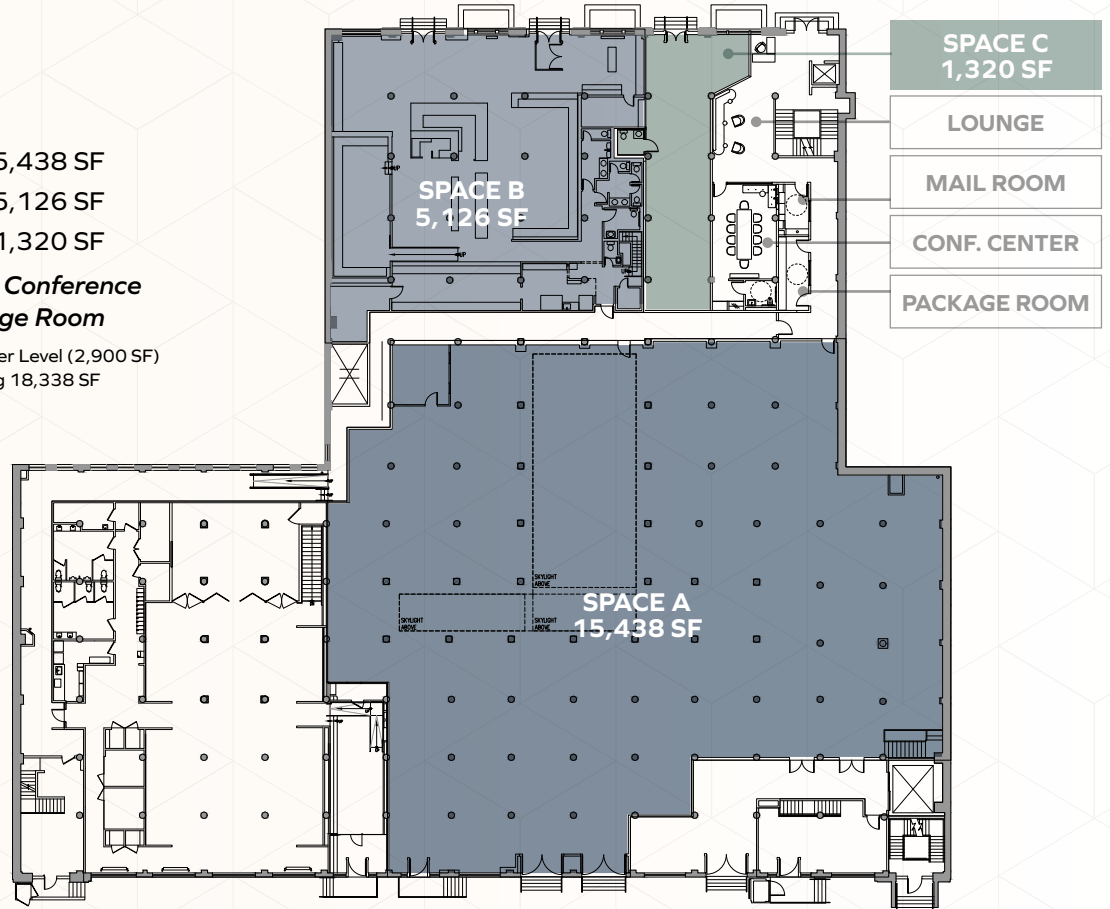
Space A* 15,438 SF

Space B 5,126 SF

Space C 1,320 SF

Coming Soon - Lounge, Conference Center, Mail and Package Room

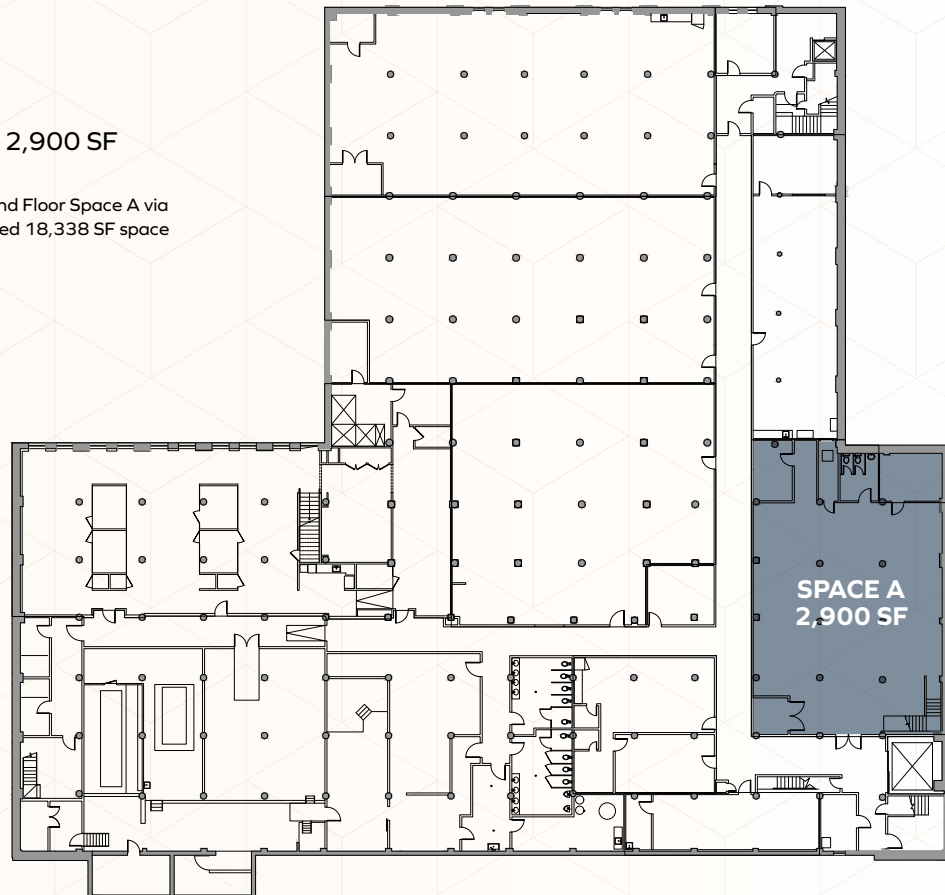
* Space A connects with the Lower Level (2,900 SF) via an internal staircase, totaling 18,338 SF



Lower Level

Space A* 2,900 SF

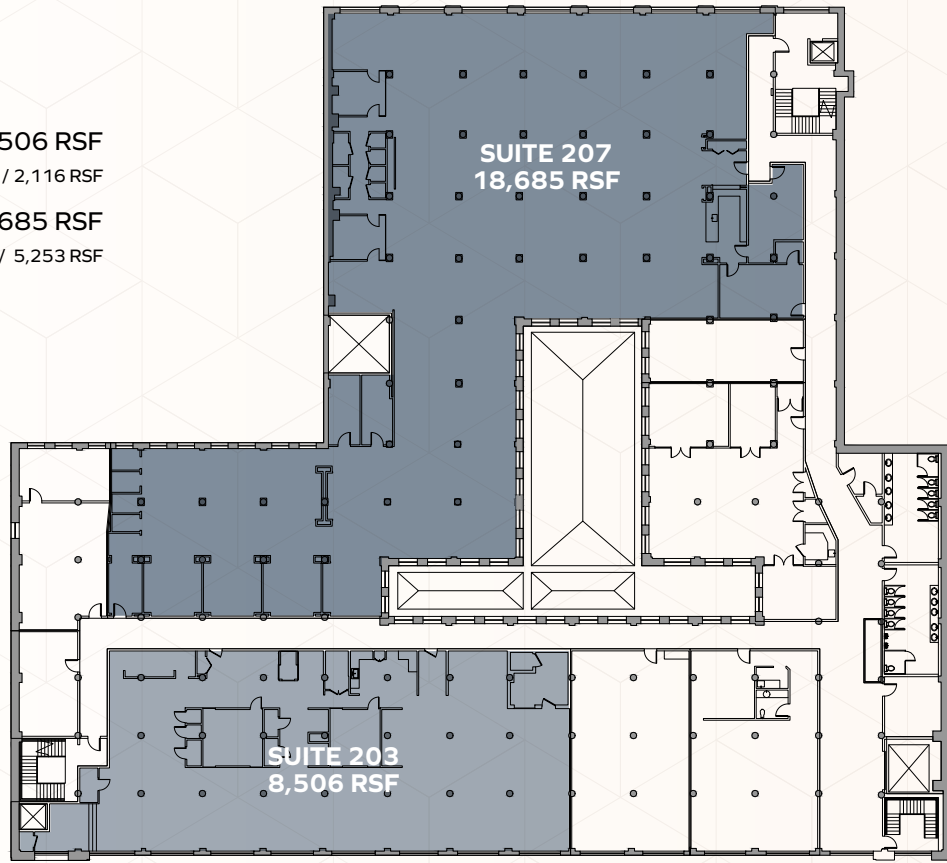
* Space A contiguous with Ground Floor Space A via internal staircase for a combined 18,338 SF space



Second Floor

Suite 203 8,506 RSF
Possible Divisions - 6,392 RSF / 2,116 RSF

Suite 207 18,685 RSF
Possible Divisions - 13,429 RSF / 5,253 RSF

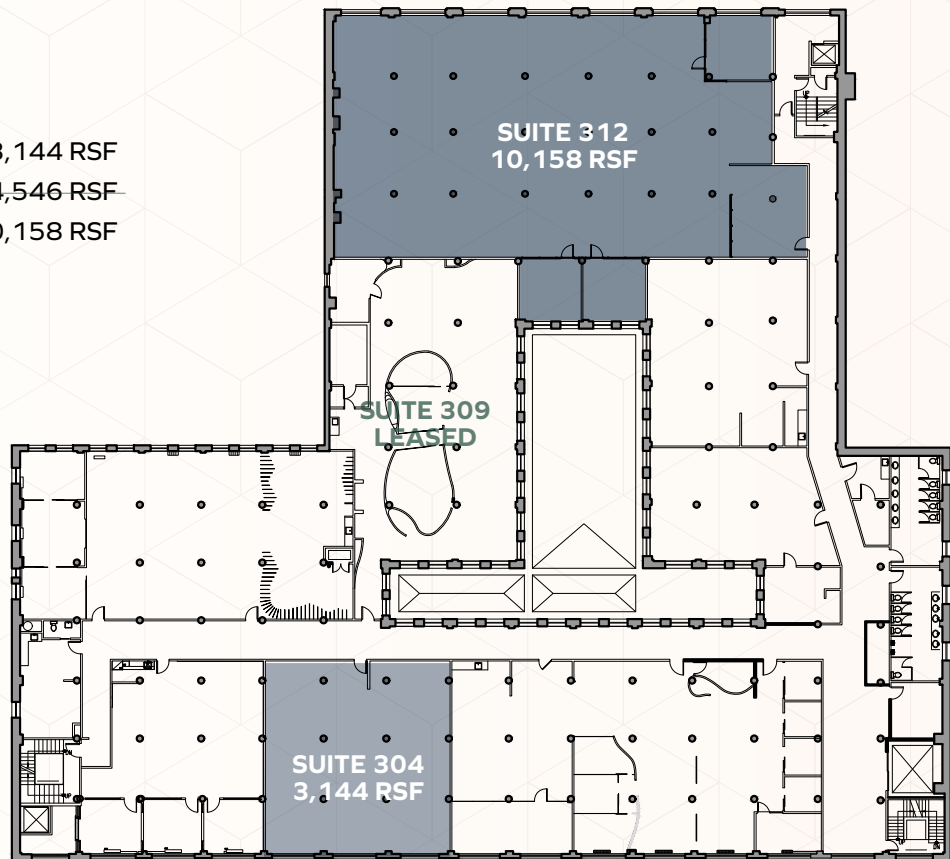


Third Floor

Suite 304 3,144 RSF

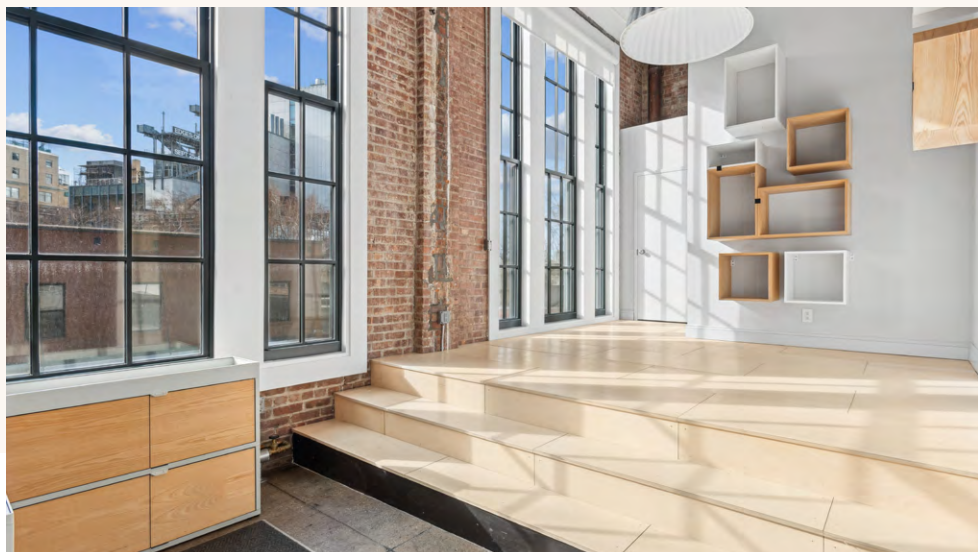
Suite 309 ~~4,546 RSF~~ LEASED

Suite 312 10,158 RSF

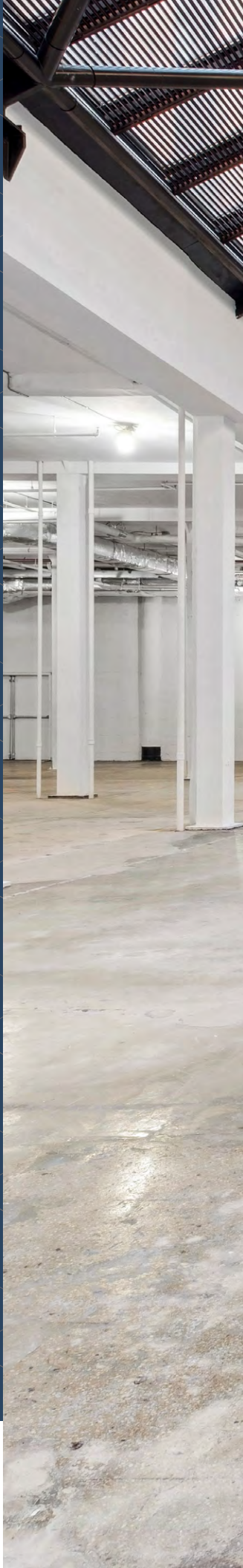


Office Spaces





Retail Spaces





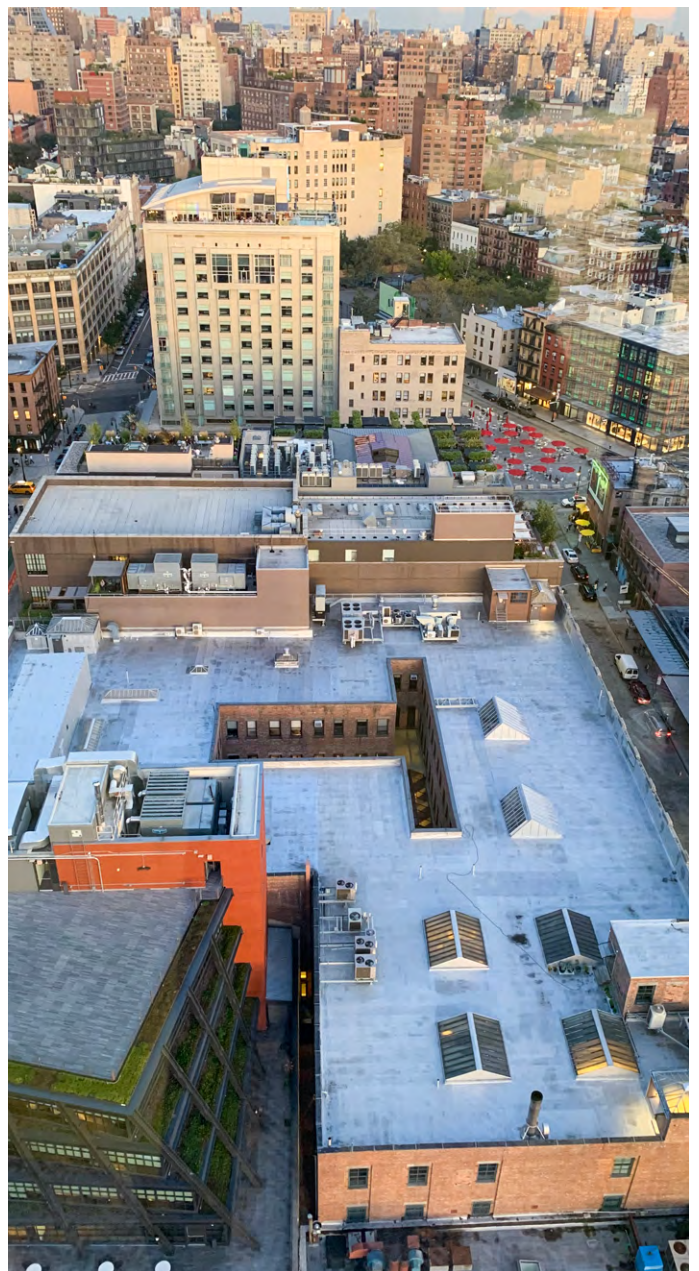
Meatpacking District

Once known as an industrial hub for its slaughterhouses, New York City's Meatpacking District has transformed into a dynamic neighborhood blending luxury, culture, and history. Centrally located within the Meatpacking District, 416 West 13th Street is surrounded by the headquarters of leading tech, media, commerce, and financial corporations, including Google, Apple, X (formerly Twitter), Samsung, and more.

Home to flagship stores from high-end brands such as Diane von Fürstenberg, Hermès, Christian Louboutin, and more, the district's cobblestone streets add to its charm. For food lovers, the Meatpacking District offers everything from gourmet dining to casual bites. Iconic spots like Catch, Pastis, and STK provide refined culinary experiences, while cozy cafes and rooftop bars offer breathtaking views of the Hudson River.

Cultural attractions include the Whitney Museum of American Art, which showcases contemporary American masterpieces, public art installations, the man-made public park Little Island, and the High Line—a transformed elevated rail line that merges nature with urban art in a unique, open-air setting.

With immediate access to Citi Bikes, the West Side Highway, and the **123ACE** and **L** subway lines, 416 West 13th Street offers unparalleled convenience for both work and leisure.







416 WEST 13TH STREET

MEATPACKING DISTRICT
NEW YORK CITY



For more information, please contact exclusive leasing agents

JOSEPH GERVINO

D. 212 858 0798

M. 631 988 5320

joseph.gervino@avisonyoung.com

ALEXIS ODGERS

D. 917 877 6027

M. 484 832 9370

alexis.odgers@avisonyoung.com

PETER JOHNSON

D. 212 729 6632

M. 203 536 1990

peter.johnson@avisonyoung.com

ALEXA DAMON

D. 212 371 2277

M. 631 807 1592

alexa.damon@avisonyoung.com

**AVISON
YOUNG**