

# INDUSTRIAL PORTFOLIO FOR SALE

**KPA**  
COMMERCIAL

880 & 894 N. 10<sup>TH</sup> STREET, SAN JOSE, CA



## 880 N. 10<sup>th</sup> Street

- Building Size: ±2,500 SF | Lot Size: ±5,734 SF
- APN: 249-08-012
- Zoning: LI – Light Industrial, General Plan – Mixed Use Neighborhood
- Single Tenant Industrial Building
- Fenced Yard
- 1 Grade Level Roll Up Door
- Easy Access to Highway 101/280/87/SJC
- Portfolio sale preferred
- Reduced Price: \$1,399,000



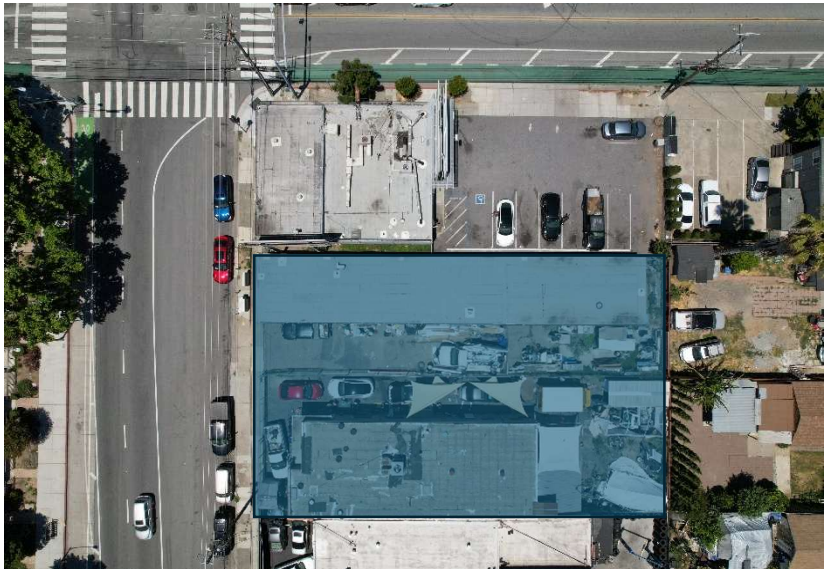
## 894 N. 10<sup>th</sup> Street

- Building Size: ±2,900 SF | Lot Size: ±5,934 SF
- APN: 249-08-013
- Zoning: LI – Light Industrial, General Plan – Mixed Use Neighborhood
- Multi-Tenant Industrial Building
- 3 Units (Each Unit Has a Restroom & One Grade Level Roll Up Door)
- Fenced Yard
- Reduced Price: \$1,399,000

Kevin Peixoto  
KPA Commercial, Inc.  
408.898.0177  
CalDRE No. 01411086  
kevin@kpacommercial.com

**KPACOMMERCIAL.COM**

The information contained herein was obtained from sources believed reliable; however, KPA Commercial, Inc. and its agents make no guarantee, warranty or representation, either expressed or implied, as the completeness or accuracy thereof. The presentation of this property is submitted subject to errors, omissions, change of price, statements of income and expenses or conditions prior to sale or lease, or withdrawal without notice. Prospective Tenants and Buyers should consult their accountant, legal counsel or other professional advisor.

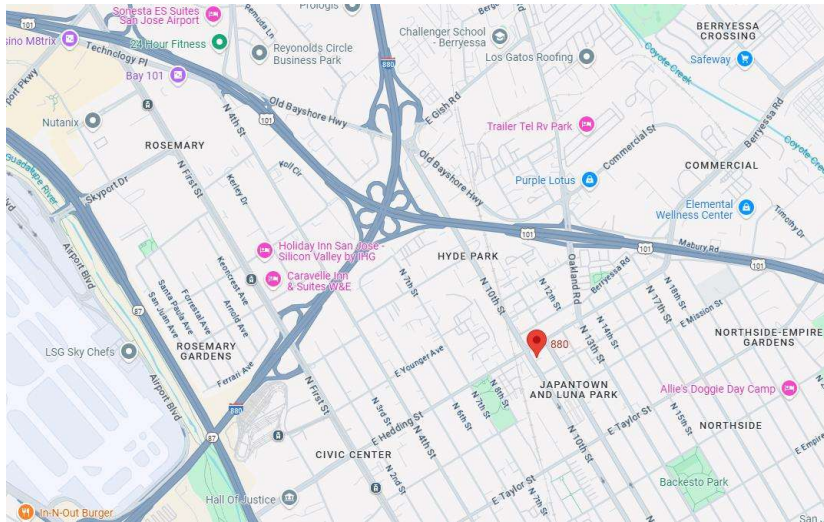
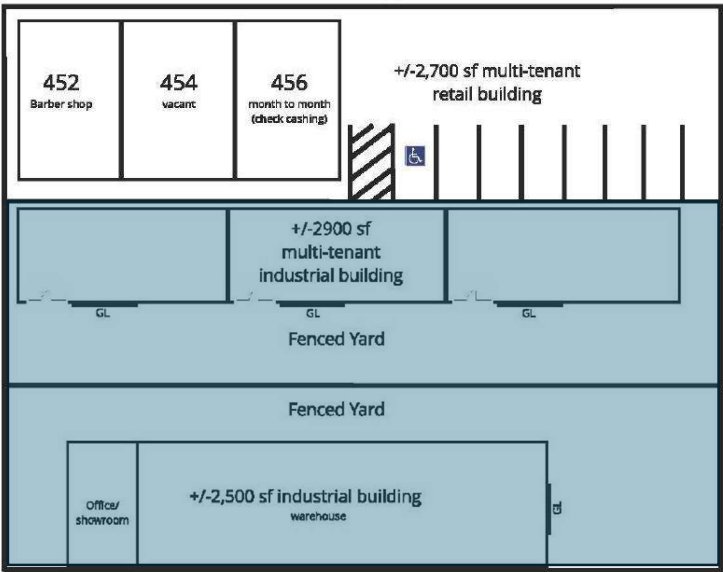


E. HEDDING STREET

456 E. Hedding Street

N. 10TH STREET

894 N. 10th Street  
880 N. 10th Street



The information contained herein was obtained from sources believed reliable; however, KPA Commercial, Inc. and its agents make no guarantee, warranty or representation, either expressed or implied, as to the completeness or accuracy thereof. The presentation of this property is submitted subject to errors, omissions, change of price, statements of income and expenses or conditions prior to sale or lease, or withdrawal without notice. Prospective Tenants and Buyers should consult their accountant, legal counsel or other professional advisor.

