

Building Two, Suite 202

For Sublease

350 North John Glenn Road
Salt Lake City, Utah 84116

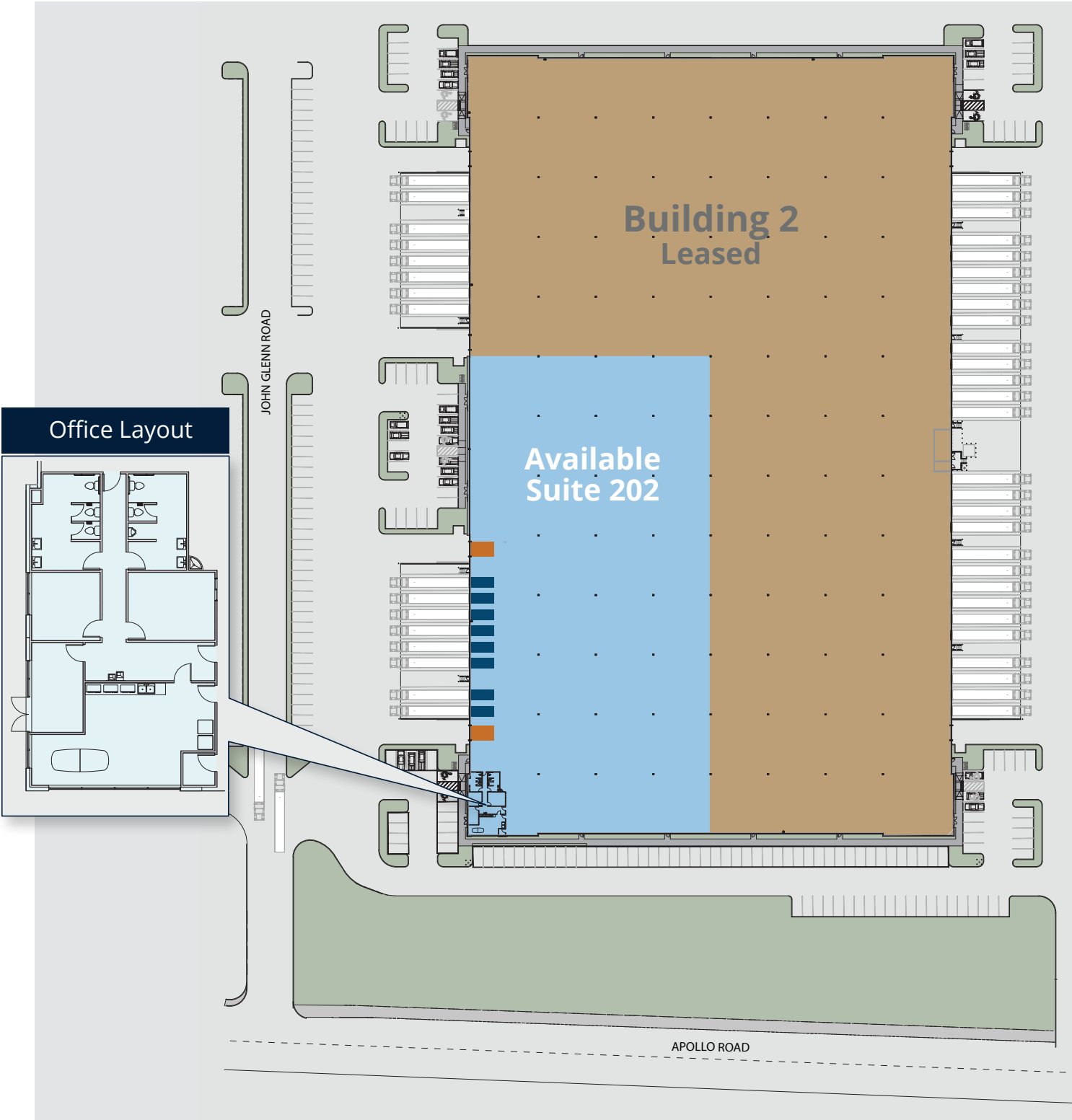


Price Reduced to ~~\$0.85 PSF~~
\$0.55 PSF!



Colliers

Building **Two** | Site Plan



Building **Two, Suite 202** | Property Highlights

• Building Size:	285,149 SF	• Column Spacing:	50' x 52' / 60' staging bays
• Available:	86,691 SF	• Power:	1,000 Amps, 480 Volt, 3-Phase power (Subtenant to confirm)
• Office:	±1,200 SF	• Employee Parking:	40 unreserved parking spaces
• Loading:	8 (9'x10') dock high doors equipped with 35,000lbs mechanical dock levelers and seals 2 (12'x14') grade level doors	• Lease Expiration:	December 31, 2026
• Clear Height:	32' clear	• Additional Features:	Clerestory windows throughout White painted warehouse decking
• Fire Suppression:	ESFR		





350 North John Glenn Road
Salt Lake City, Utah 84116



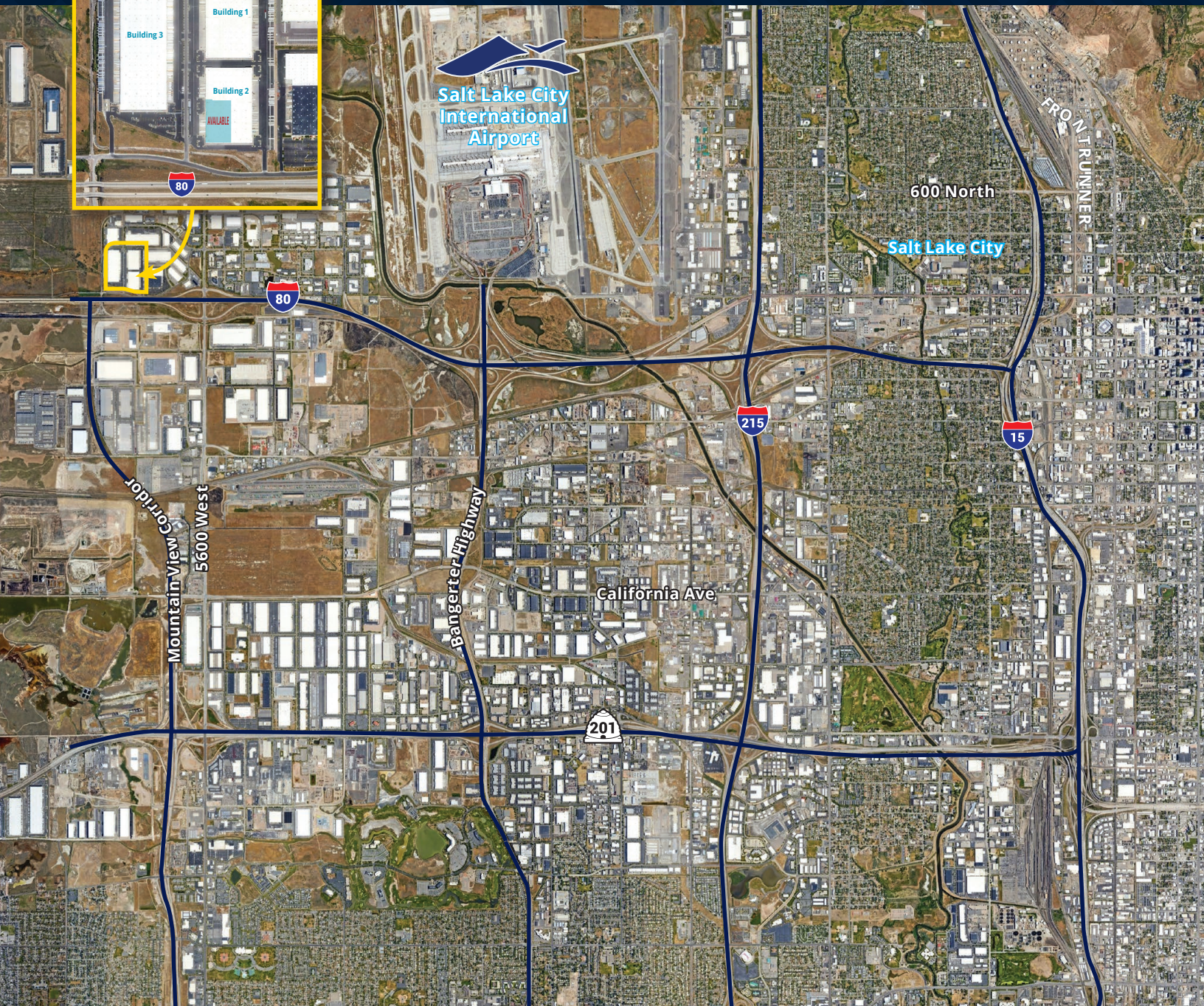
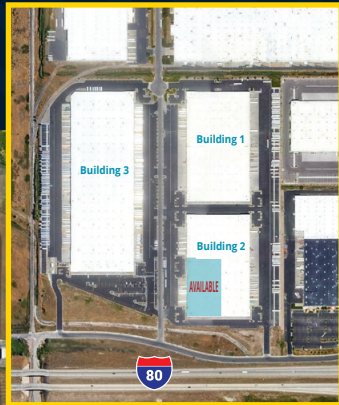
Colliers

111 S. Main St., Suite 2200

Salt Lake City, UT 84111

Main: +1 801 947 8300

colliers.com



Tom Freeman, SIOR
Vice Chair
801 947 8309
tom.freeman@colliers.com

Travis Healey, SIOR
Vice Chair
801 947 8335
travis.healey@colliers.com

Jeremy Jensen, SIOR, CCIM
Executive Vice President
801 441 1207
jeremy.jensen@colliers.com

Jeremy Terry
Vice President
801 671 9349
jeremy.terry@colliers.com