

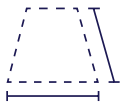
For Lease

Groves Medical Plaza 13475 Southern Blvd Loxahatchee Groves, FL

Medical office space available in Class A building in Loxahatchee Groves, Wellington, and Royal Palm Beach

Colliers is proud to present the lease of Groves Medical Plaza in Loxahatchee Groves, Florida. The 2-story 22,000 SF medical/professional building is situated on the northeast corner of Southern Boulevard and Big Blue Trace/F Road. This property is adjacent to the Palms West Hospital and is in close proximity to many of the area's amenities.

Property Highlights



±3,964 SF space available



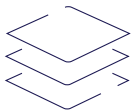
Dramatic architectural details



Hurricane impact windows



Backup standby generator



Efficient floor plates



Generous improvement allowance



Abundant parking



Easy access at signalized intersection

Asking price:

\$25.00
PSF NNN

Contact us:

Gary Gottlieb, SIOR

Executive Vice President

Direct: +1 561 353 3636

Mobile: +1 561 889 5707

gary.gottlieb@colliers.com

Colliers

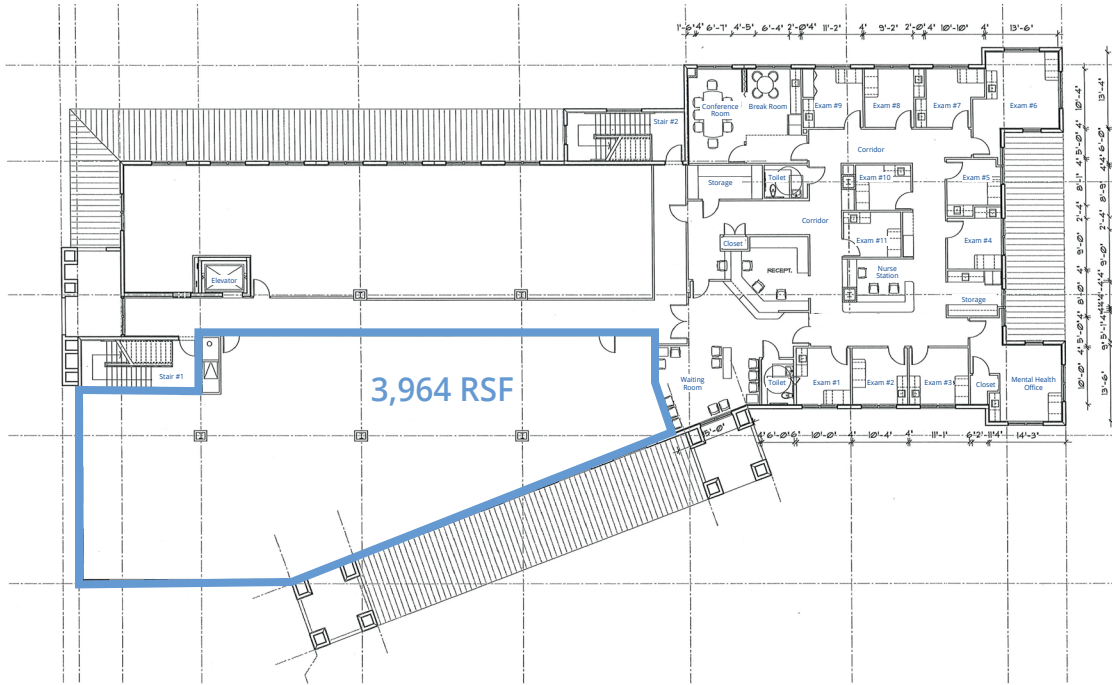
2385 NW Executive Center Drive

Suite 350

Boca Raton, FL 33431

colliers.com

Floor Plan - Suite 200



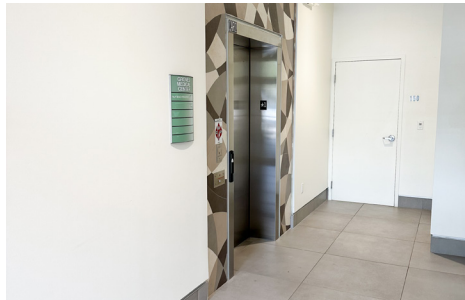
3,964 RSF - \$25.00 NNN

Suite Highlights:

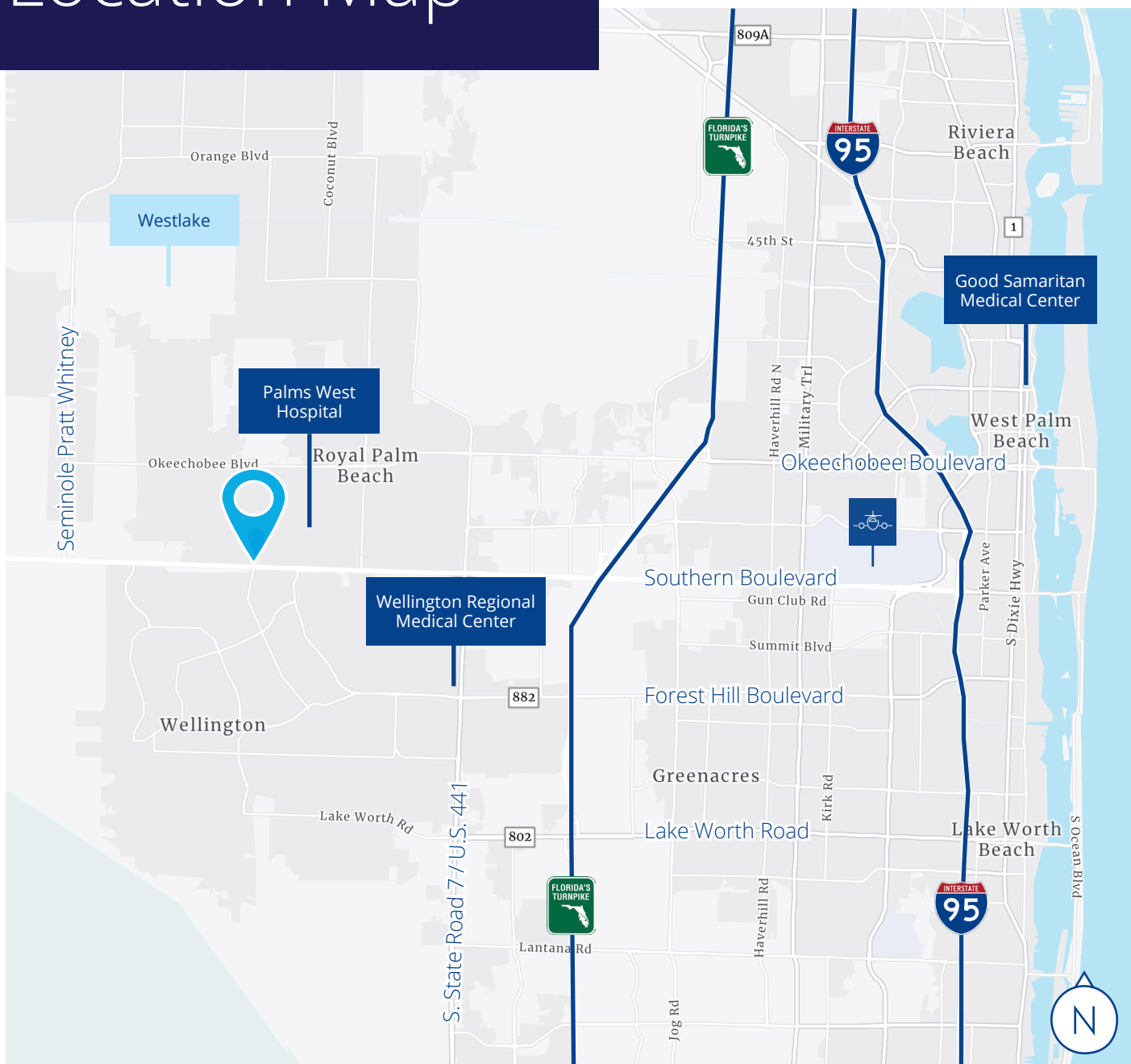
- Shell condition
- Generous Tenant Improvement Allowance



Exterior Photos



Location Map



Demographic Snapshot - 3-mile radius



2025 Total
Population

58,221



2030 Total
Population

57,641



2025 Avg. HH
Income

\$150,192



2030 Avg. HH
Income

\$170,320