

8671

WILSHIRE BLVD

BEVERLY HILLS, CA 90211

Tower-Wilshire Medical Center

CLASS A MEDICAL OFFICE | BEVERLY HILLS, CA
RENOVATIONS UNDERWAY



COMMERCIAL
ASSET GROUP

NEWMARK

PROPERTY OVERVIEW



Welcome to 8671 Wilshire Blvd - Tower Wilshire Medical, a premier class A medical office building representing the pinnacle of healthcare excellence. This distinguished property hosts some of Southern California's most respected physicians, offering a superior environment for both medical professionals and their patients.

Renovated Common Areas to be Completed in 2025: Tower Wilshire Medical is set for a multi-million dollar renovation, with common areas thoughtfully upgraded to deliver a modern and comfortable experience for tenants and visitors alike.

Cutting-Edge Technology: Stay on the forefront of innovation with fiber optic internet capabilities, ensuring seamless communication and optimal operational efficiency.

Turn-Key Leasing Opportunities: Many suites feature high-quality medical buildouts that are ready for immediate occupancy, providing a turnkey solution for healthcare providers.

Unbeatable Proximity: Located just half a mile from Cedars Sinai, Tower Wilshire Medical offers exceptional convenience for medical professionals seeking proximity to one of the region's top hospitals.

Easy Access: The new Purple Line station at La Cienega & Wilshire will soon enhance convenience for both tenants and patients.

Vibrant Amenities: Enjoy an array of walkable dining and shopping options in the area, including esteemed establishments such as the SLS Hotel, the Four Seasons Hotel, the Sofitel, and The Beverly Center.

At Tower Wilshire Medical, we are committed to providing an unparalleled environment that elevates the standard of medical office excellence. Join us in shaping the future of healthcare in Southern California.

8671
WILSHIRE BLVD

BEVERLY HILLS, CA 90211

Tower-Wilshire Medical Center

AVAILABILITY

AVAILABLE SPACE

Suite 400: ±4,358 RSF *Suite 609: ±686 RSF
Suite 500: ±7,500 RSF *Suite 611: ±308 RSF
Suite 601: ±655 RSF Suite 701: ±668 RSF
Suite 602: ±466 RSF Suite 703: ±246 RSF
Suite 608: ±405 RSF Suite 705: ±689 RSF

*Contiguous to ±994 RSF

RATE

Negotiable

TERM

3 - 10 Years

PARKING

3/1,000 SF
Unreserved: \$175/Mo
Reserved: \$250/Mo
North Wing: \$275/Mo



8671
WILSHIRE BLVD

BEVERLY HILLS, CA 90211
Tower-Wilshire Medical Center

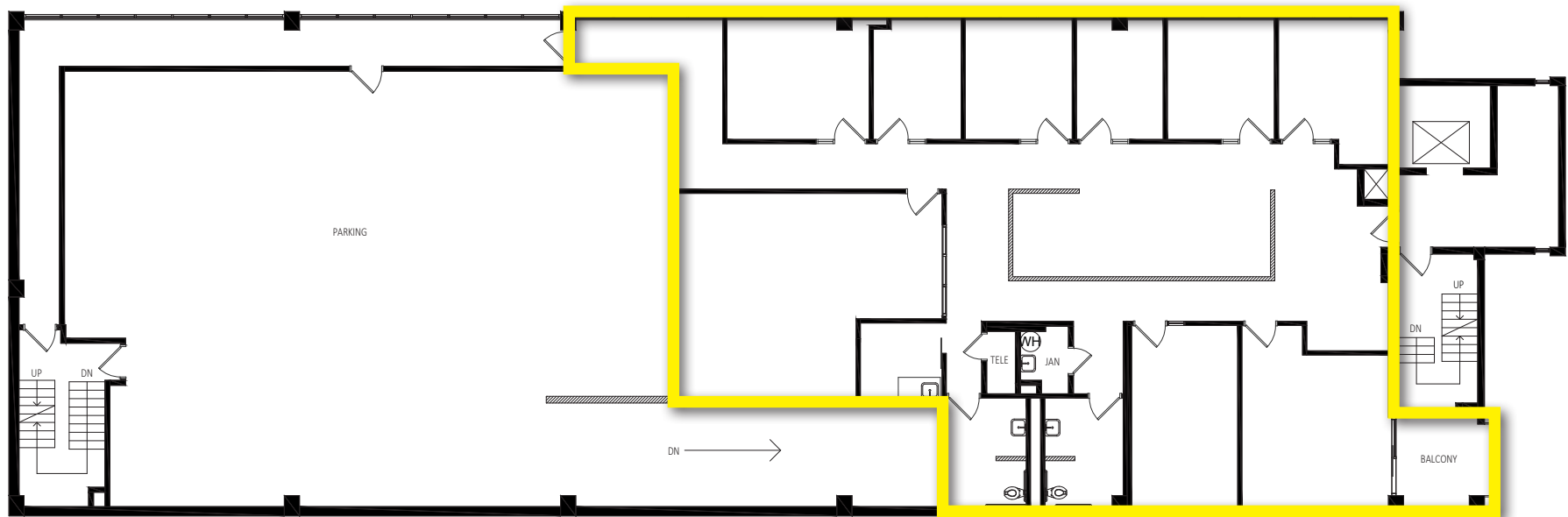
4TH FLOOR

SUITE INFO:

- Full floor elevator entry space
- Direct access to parking lot
- 8 exam rooms
- 2 ADA restrooms
- Large breakroom



ENTIRE 4TH FLOOR: ±4,358 RSF



8671
WILSHIRE BLVD

BEVERLY HILLS, CA 90211
Tower-Wilshire Medical Center

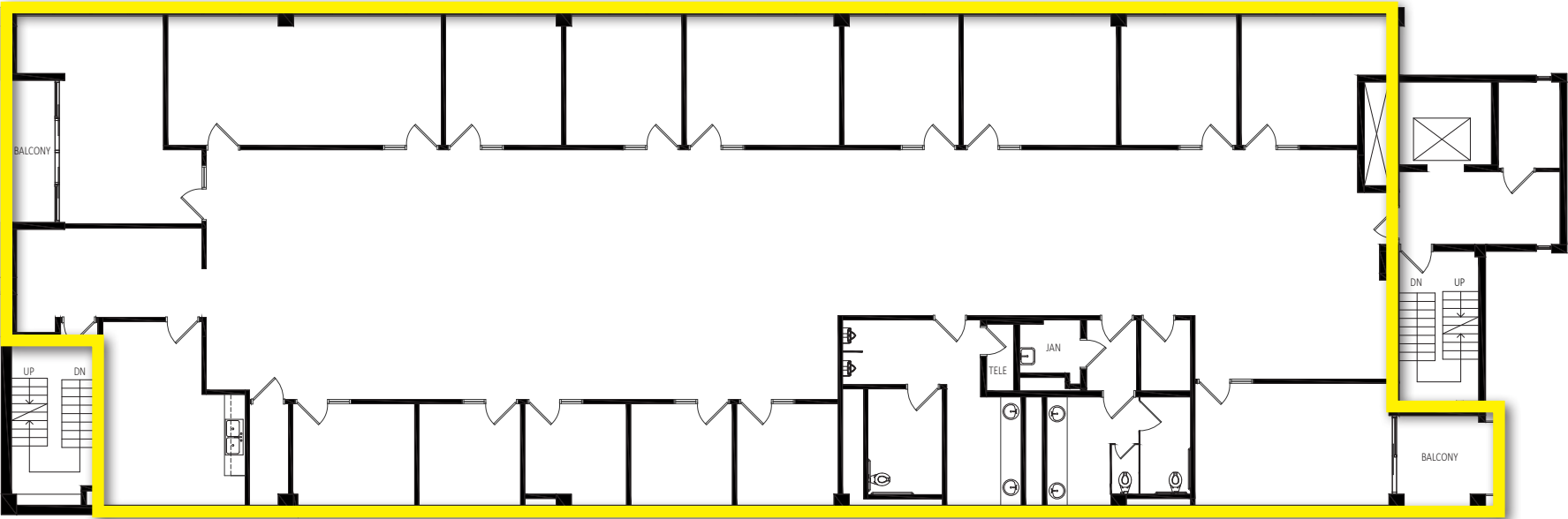
5TH FLOOR PLAN

SUITE INFO:

- Full floor elevator entry space
- 17 exam rooms
- 2 ADA restrooms
- Large breakroom



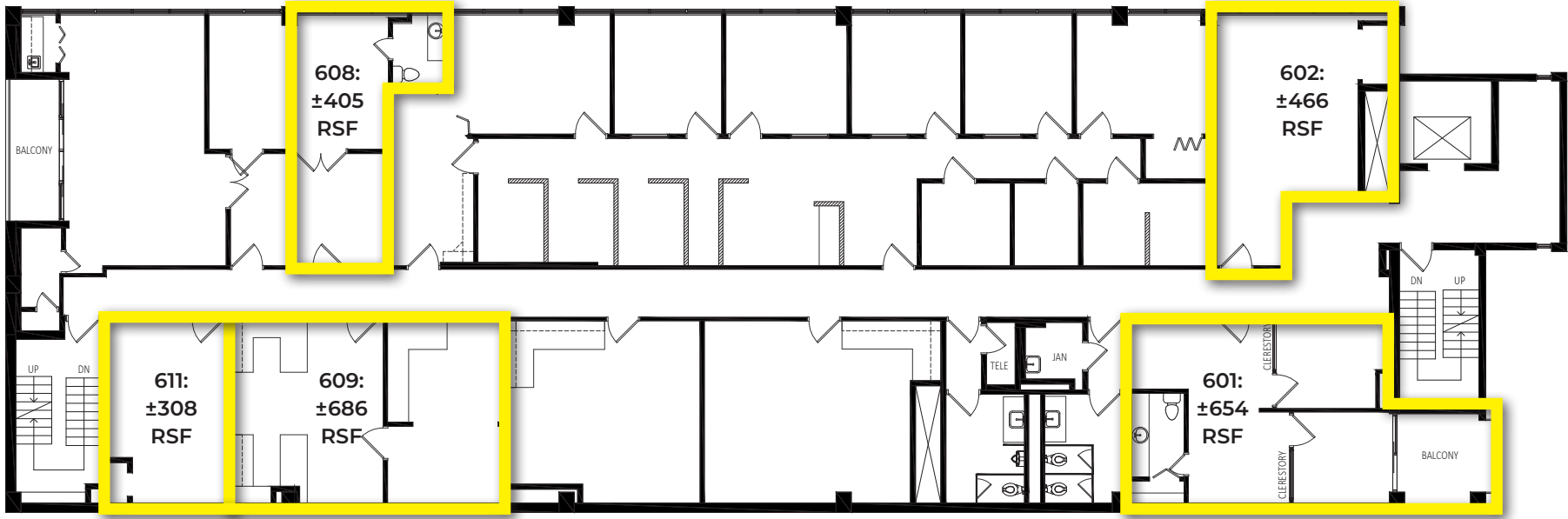
ENTIRE 5TH FLOOR: ±7,500 RSF



8671
WILSHIRE BLVD

BEVERLY HILLS, CA 90211
Tower-Wilshire Medical Center

6TH FLOOR PLAN



±994 RSF (CONTIGUOUS)

7TH FLOOR PLAN

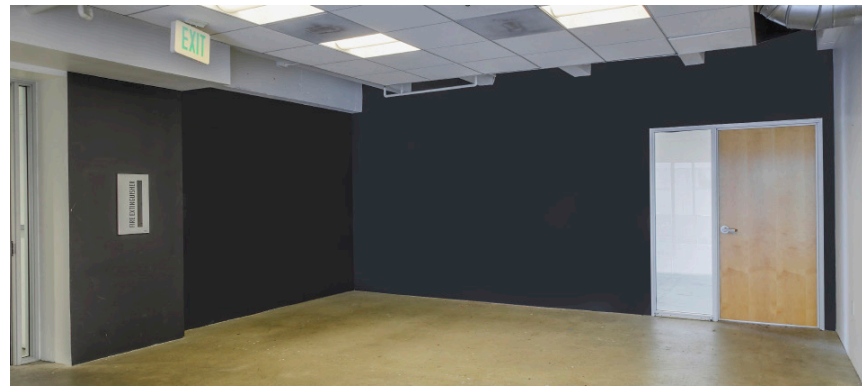


±935 RSF (CONTIGUOUS)

8671
WILSHIRE BLVD

BEVERLY HILLS, CA 90211
Tower-Wilshire Medical Center

ADDITIONAL PHOTOS

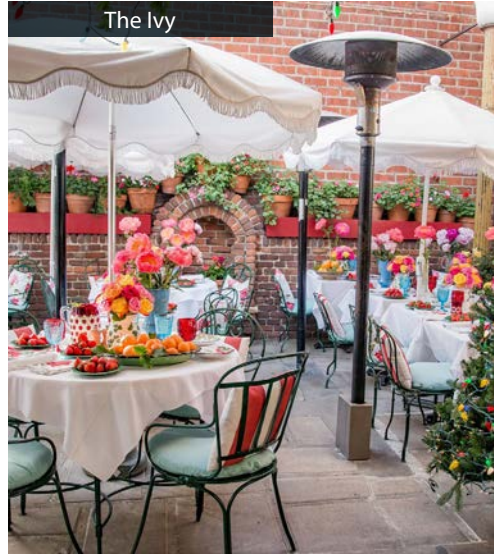


8671
WILSHIRE BLVD
BEVERLY HILLS, CA 90211
Tower Wilshire Medical Center

AREA NEIGHBORS



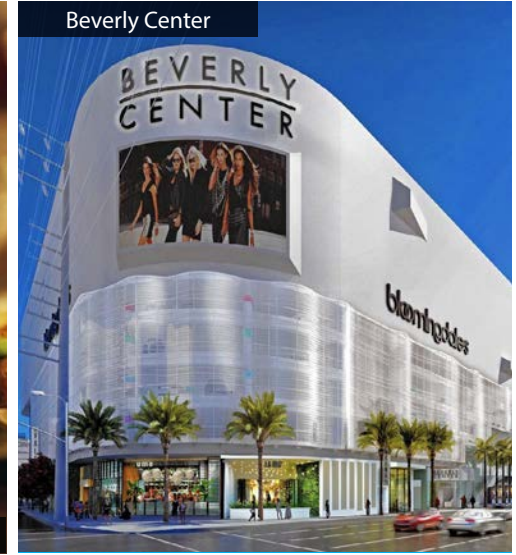
Cedars Sinai



The Ivy



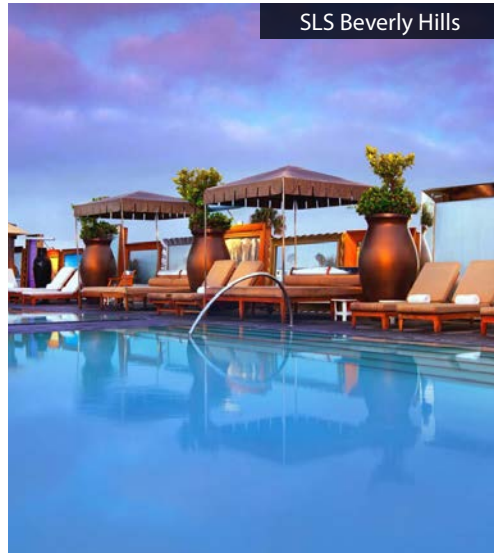
Tagine



Beverly Center



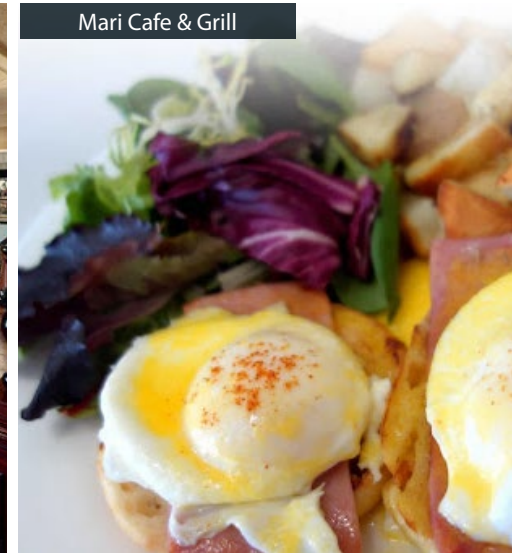
Prospect Gourmand



SLS Beverly Hills



Lawry's Beverly Hills



Mari Cafe & Grill

8671
WILSHIRE BLVD

BEVERLY HILLS, CA 90211
Tower-Wilshire Medical Center

8671

WILSHIRE BLVD

BEVERLY HILLS, CA 90211

TOWER-WILSHIRE MEDICAL CENTER

Daniel Chiprut

Executive Vice President
Commercial Asset Group
D 310.275.8222
daniel@cag-re.com
Lic. 01808709

Steven Salas

Senior Managing Director
Newmark
D 310.508.0660
steven.salas@nmrk.com
Lic. 01232955

Commercial Asset Group

1801 Century Park East, STE 1550
Los Angeles, CA 90067
P 310.275.8222 F 310.275.8223
www.cagre.com Lic. 01876070

These materials are based on information and content provided by others, which we believe are accurate. No guarantee, warranty or representation is made by Commercial Asset Group, Inc. or its personnel. All interested parties must independently verify accuracy and completeness. As well, any projections, assumptions, opinion, or estimates are used for example only and do not represent the current or future performance of the identified property. Your tax, financial, legal and toxic substance advisors should conduct a careful investigation of the property and its suitability for your needs, including land use limitations. The property is subject to prior lease, sale, change in price, or withdrawal from the market without notice.



COMMERCIAL
ASSET GROUP

NEWMARK