

2745 W FAIRBANKS
WINTER PARK

FOR LEASE



MULTIPLE BOUTIQUE MOVE-IN READY WINTER PARK OFFICE SUITES



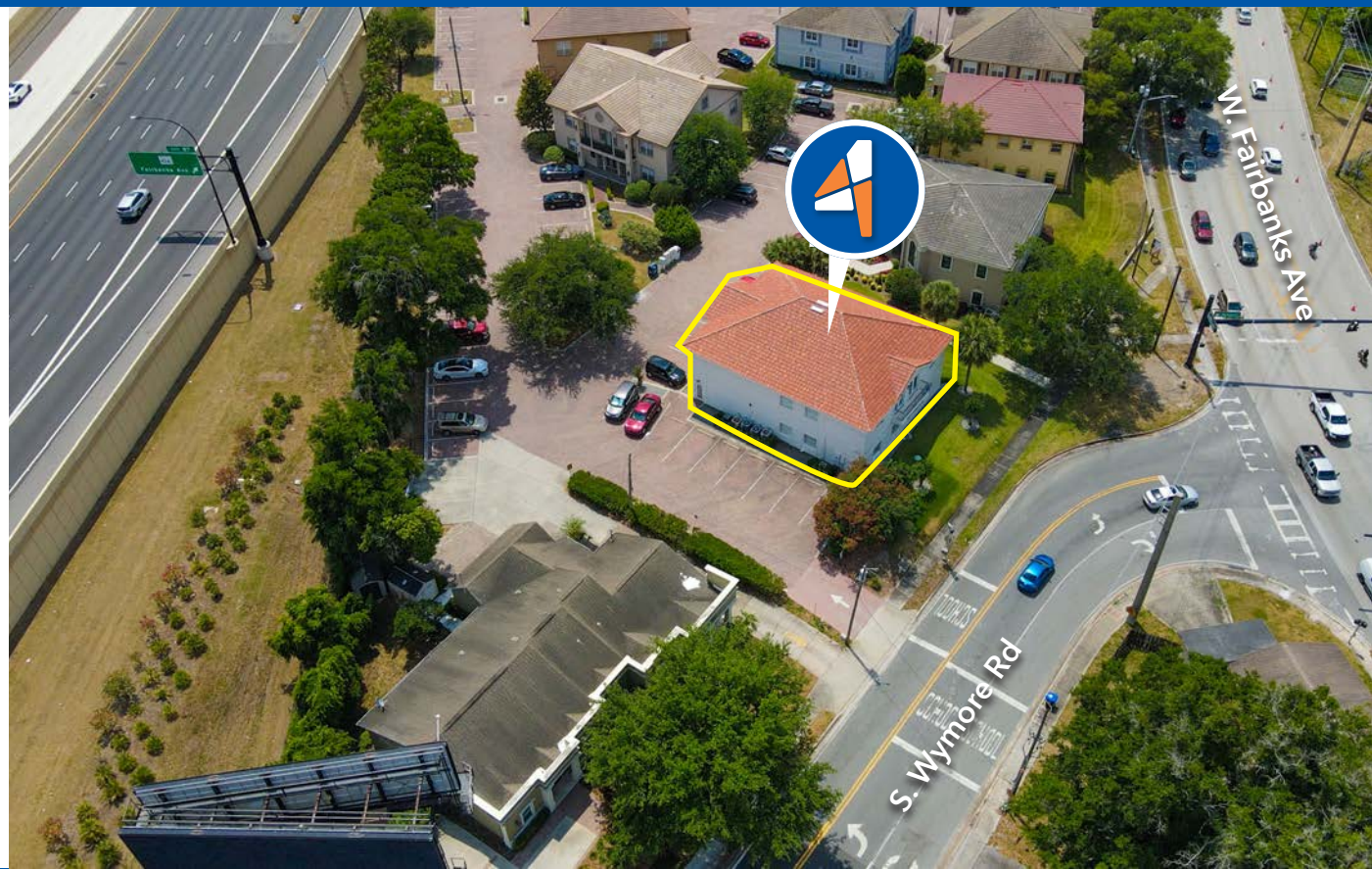
Up to ±395 SF 2nd Floor Office Space Available

2745 W Fairbanks Ave Unit 6, Winter Park, FL 32789

CALL FOR
DETAILS

PROPERTY DETAILS

Lease Rate:	CALL FOR DETAILS
Rentable SF:	Suite 201 - ±105 SF Suite 202 - ±135 SF Suite 203 - ±155 SF
All Suites Combined:	±395 SF
Location:	2745 W Fairbanks Ave Winter Park, FL 32789
Parcel ID:	11-22-29-0619-00-060
Zoning:	Condo Office
Property Use:	Office Only
Building Size:	6,000 SF
Stories:	2
Year Built:	1990
Parking:	4/1,000



HIGHLIGHTS

- Reserved Parking
- Easy access to I-4
- Currently furnished
- Updated finishing throughout including restrooms
- Internet included with Rental Rate

Don't Miss Out!

Contact us today to discuss this amazing, well appointed office space

BEAUTIFUL MOVE-IN READY WINTER PARK OFFICE SPACE

Are you searching for the perfect office location to position your Winter Park business for success? Look no further than 2745 W Fairbanks Ave! This strategically situated property offers a compelling blend of convenience, professionalism, and a prestigious Winter Park address.

Call today for additional details!

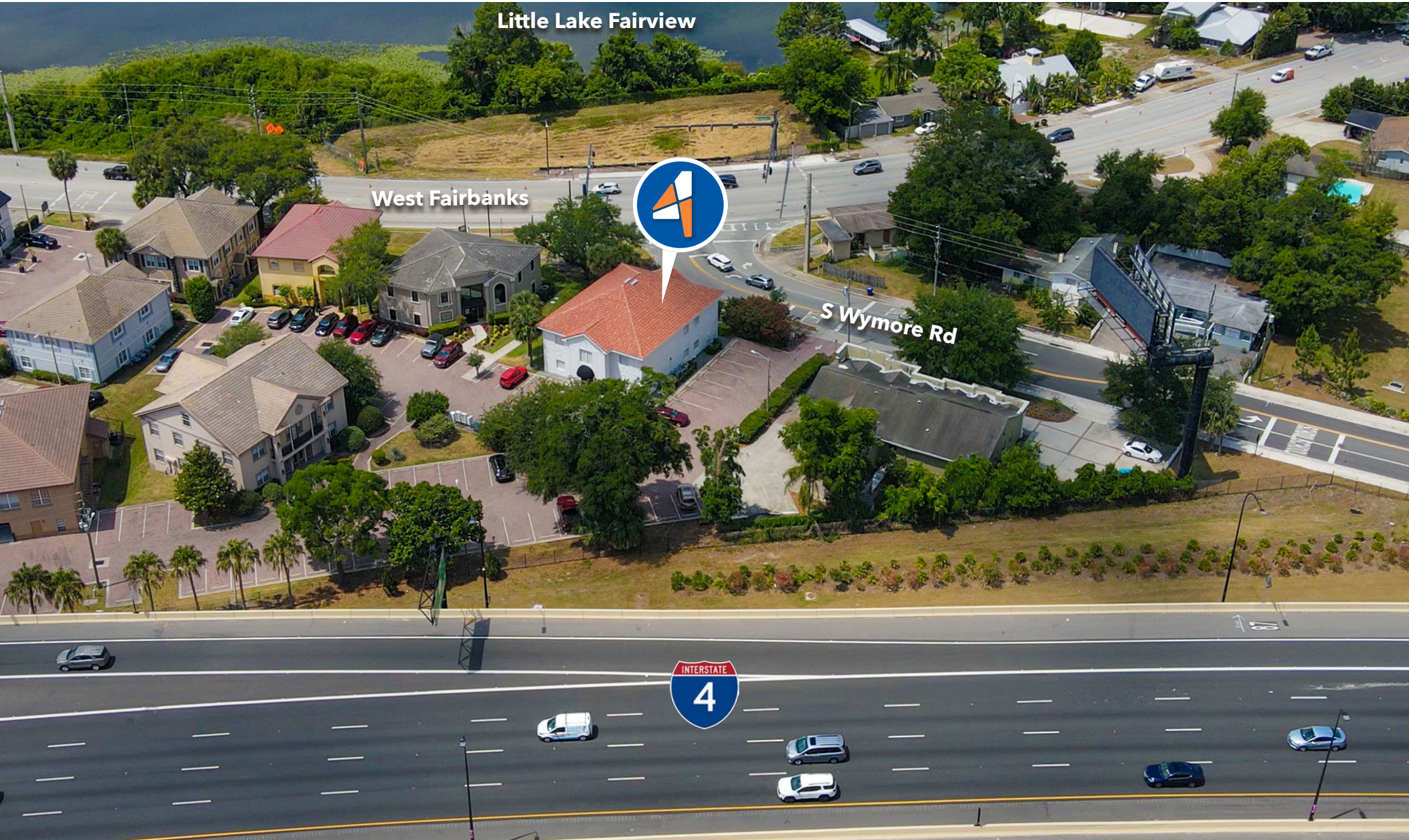
OFFERED BY:



Garrett Gleiter
garrett@4acre.com
407.539.4514

Natalee Gleiter
natalee@4acre.com
407.601.1466

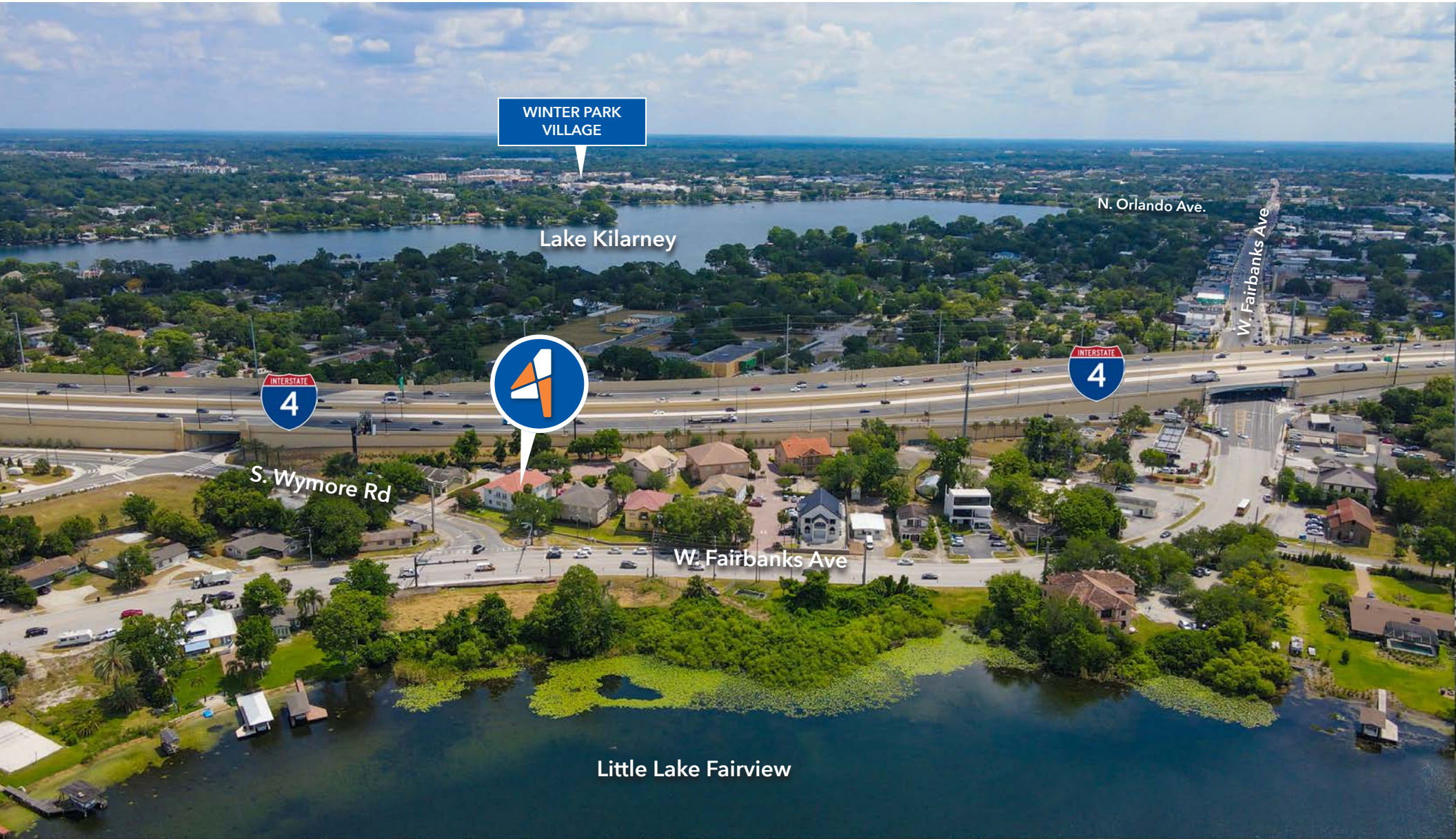
PROPERTY AERIAL



4 ACRE COMMERCIAL | CONTACT GARRETT GLEITER AT 407.539.4514 OR NATALEE GLEITER AT 407.601.1466



LOCATION AERIAL - EAST VIEW



LOCATION AERIAL - SOUTH VIEW



ELEVATION



4 ACRE COMMERCIAL | CONTACT GARRETT GLEITER AT 407.539.4514 OR NATALEE GLEITER AT 407.601.1466



INTERIORS - COMMON AREAS



FIRST FLOOR ENTRANCE



COMMON SITTING AREA



COMMON BREAK ROOM



COMMON CONFERENCE ROOM

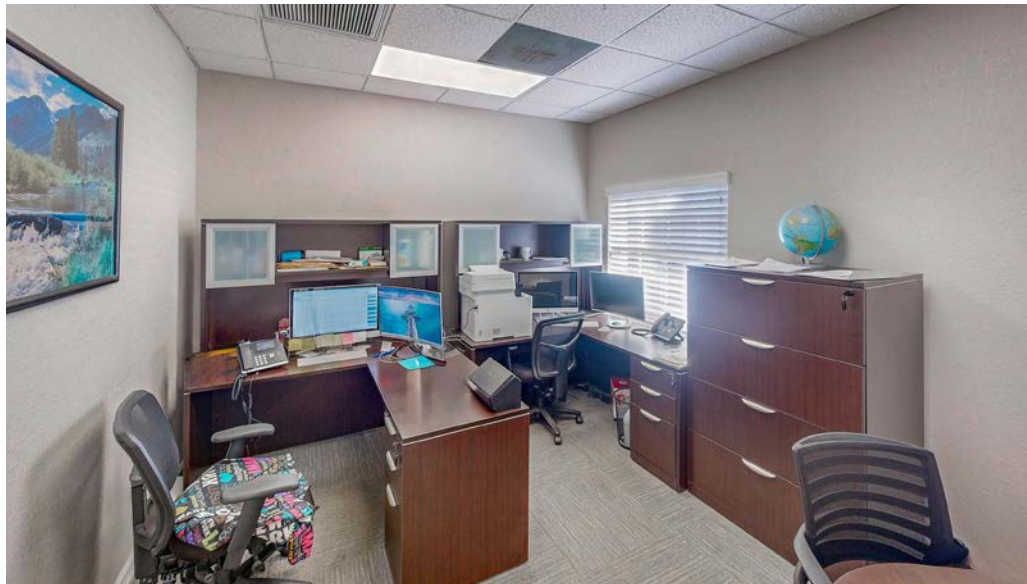
INTERIORS - AVAILABLE SUITES



SUITE 201

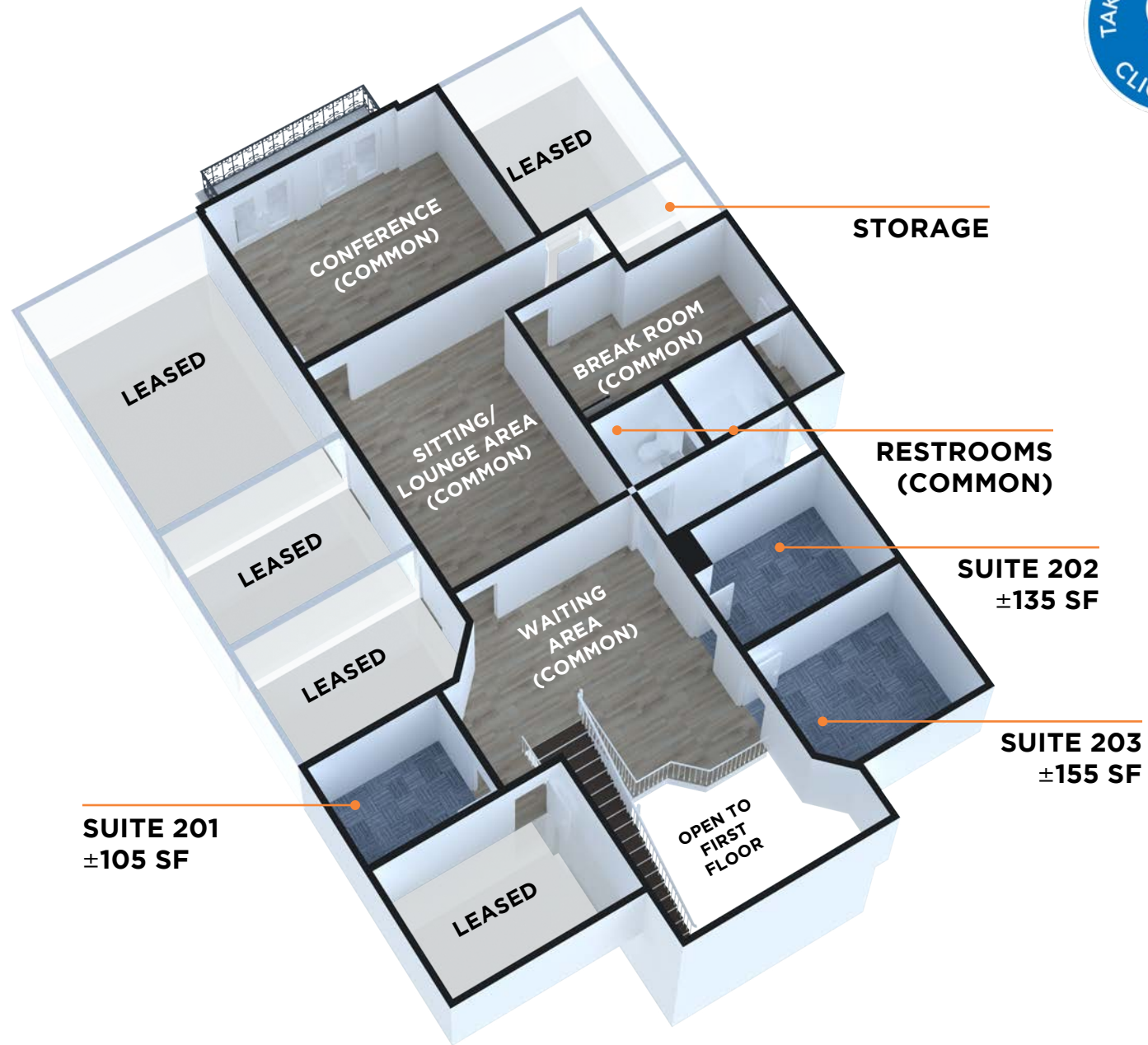


SUITE 202

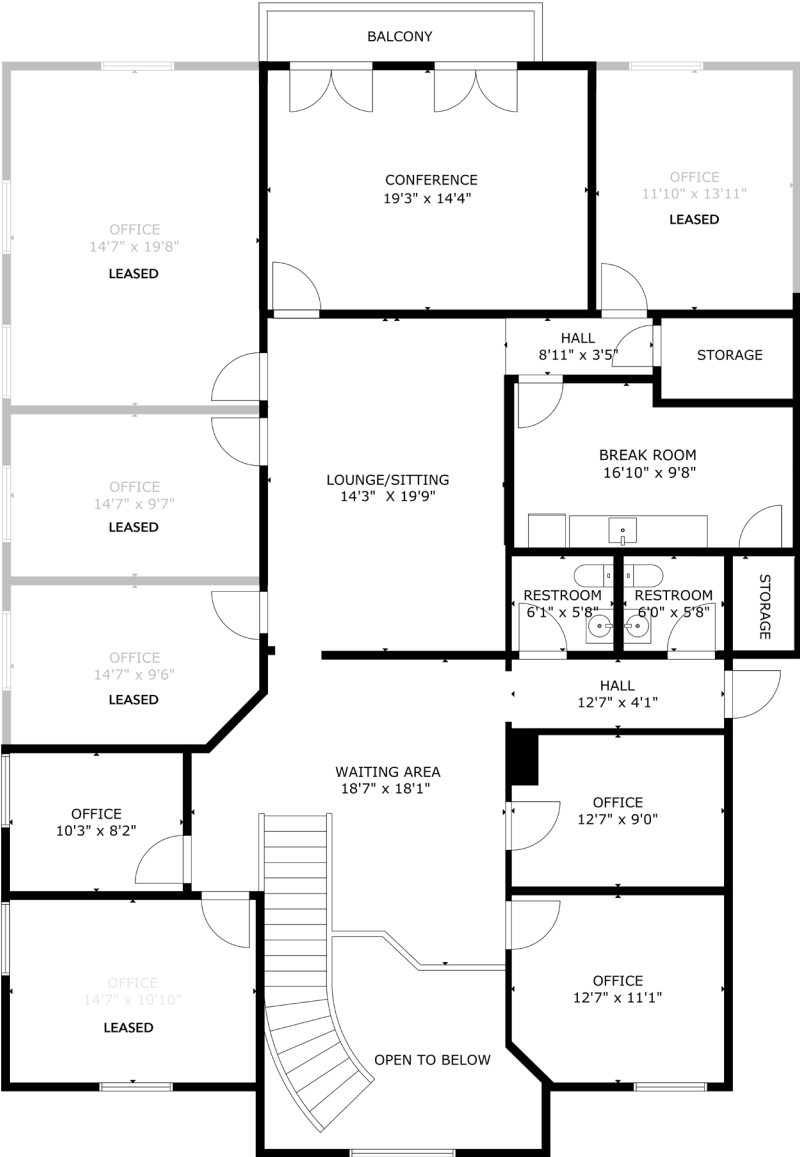


SUITE 203

2ND FLOOR LAYOUT | OFFICES + COMMON AREAS

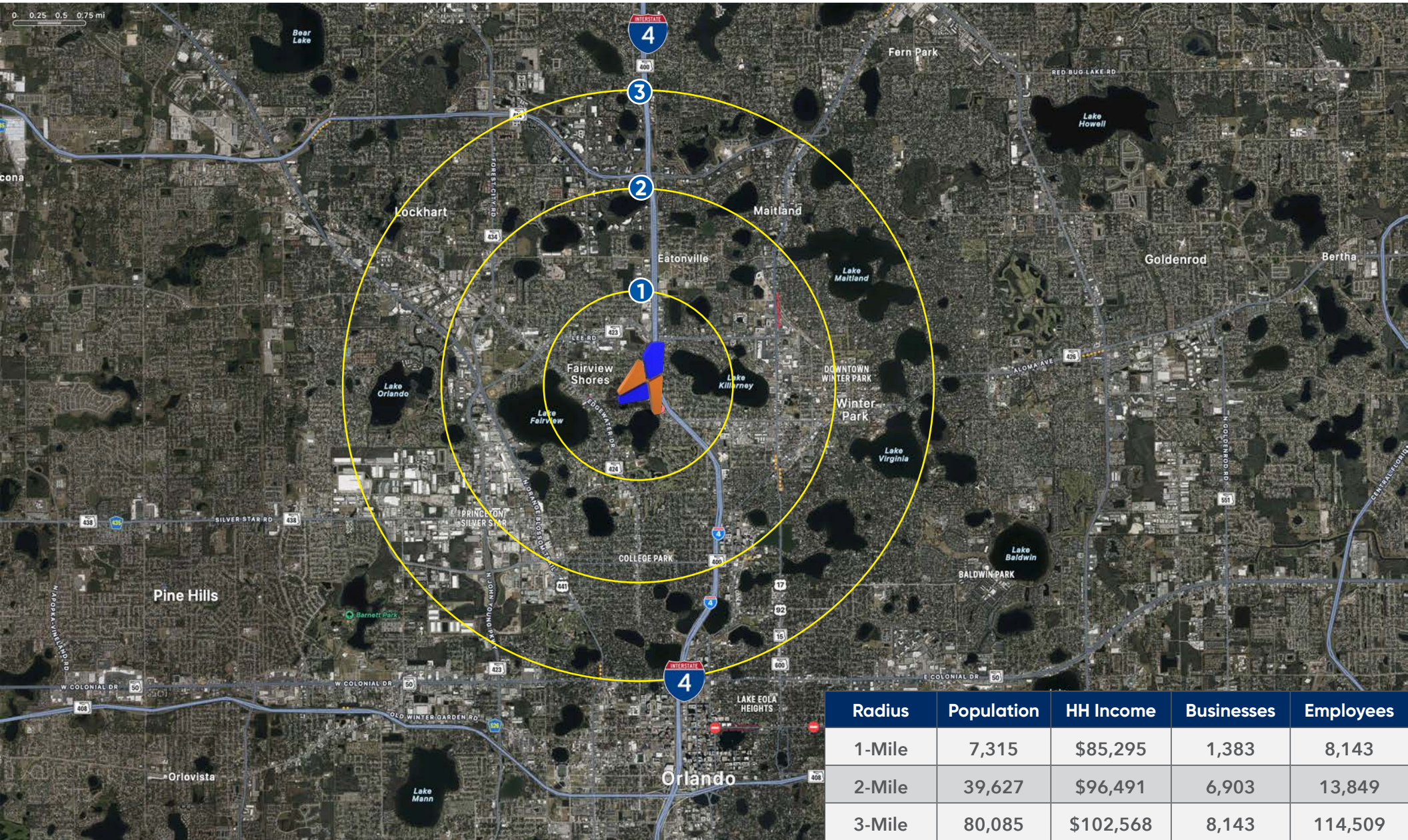


AVAILABLE SUITE FLOOR PLANS + COMMON AREAS



FLOOR 1

LOCATION MAP



4 ACRE COMMERCIAL | CONTACT GARRETT GLEITER AT 407.539.4514 OR NATALEE GLEITER AT 407.601.1466





Garrett Gleiter
garrett@4acre.com
407.539.4514

Natalee Gleiter
natalee@4acre.com
407.601.1466

4 Acre Commercial Real Estate (4 Acre) does not represent or warranty the accuracy of the information contained herein. Such information has been given to 4 Acre by the owner of the property or obtained from other sources deemed reliable. 4 Acre has no reason to doubt its accuracy, but does not guarantee it. The reviewer(s) of this document is encouraged to perform their own research for their own purposes to verify the dependability of the information being reviewed. All information should be verified by reviewer(s) prior to purchase or lease. Unless otherwise noted, the property is being offered as-is, where is, with all faults. This information represents the proprietary work product of 4 Acre Realty, LLC and may not be copied, reproduced, modified, distributed, published, transmitted, or otherwise disclosed without the express written consent of 4 Acre Realty, LLC.