

2301 & 2401 WEST BIG BEAVER RD
SOMERSET PLACE
TROY, MICHIGAN



Under New Ownership





THE OPPORTUNITY

Recently acquired by A.F. Jonna, Somerset Place is set to undergo a complete redevelopment featuring new Class A amenities, onsite retail, new lobbies, upgraded common areas, and more. Comprised of two buildings, Somerset Place offers Class A premium office space, ideal for businesses looking to establish or expand their presence in this vibrant commercial hub.

- Up to 300,000 SF available
- 21,062 and 23,448 SF floor plates
- Future onsite Retail and Class A amenities
- Building Signage
- Access and proximity to Somerset Inn
- Onsite deck parking

Troy's Golden Corridor is renowned for its thriving business community, and this opportunity is within walking distance to upscale shopping, diverse dining options, high-end hotel accommodations, and a plethora of entertainment options, just to name a few.



SOMERSET
COLLECTION

BANK OF AMERICA

DICKINSON WRIGHT



JPMORGAN
CHASE & CO.

MR. KABOB
GRILLE & CATERING

Eddie V's
PRIME SEAFOOD

DIAMONDS DIRECT

Mercantile Bank

2401
W. BIG BEAVER RD

2301
W. BIG BEAVER RD

Flagstar
Bank

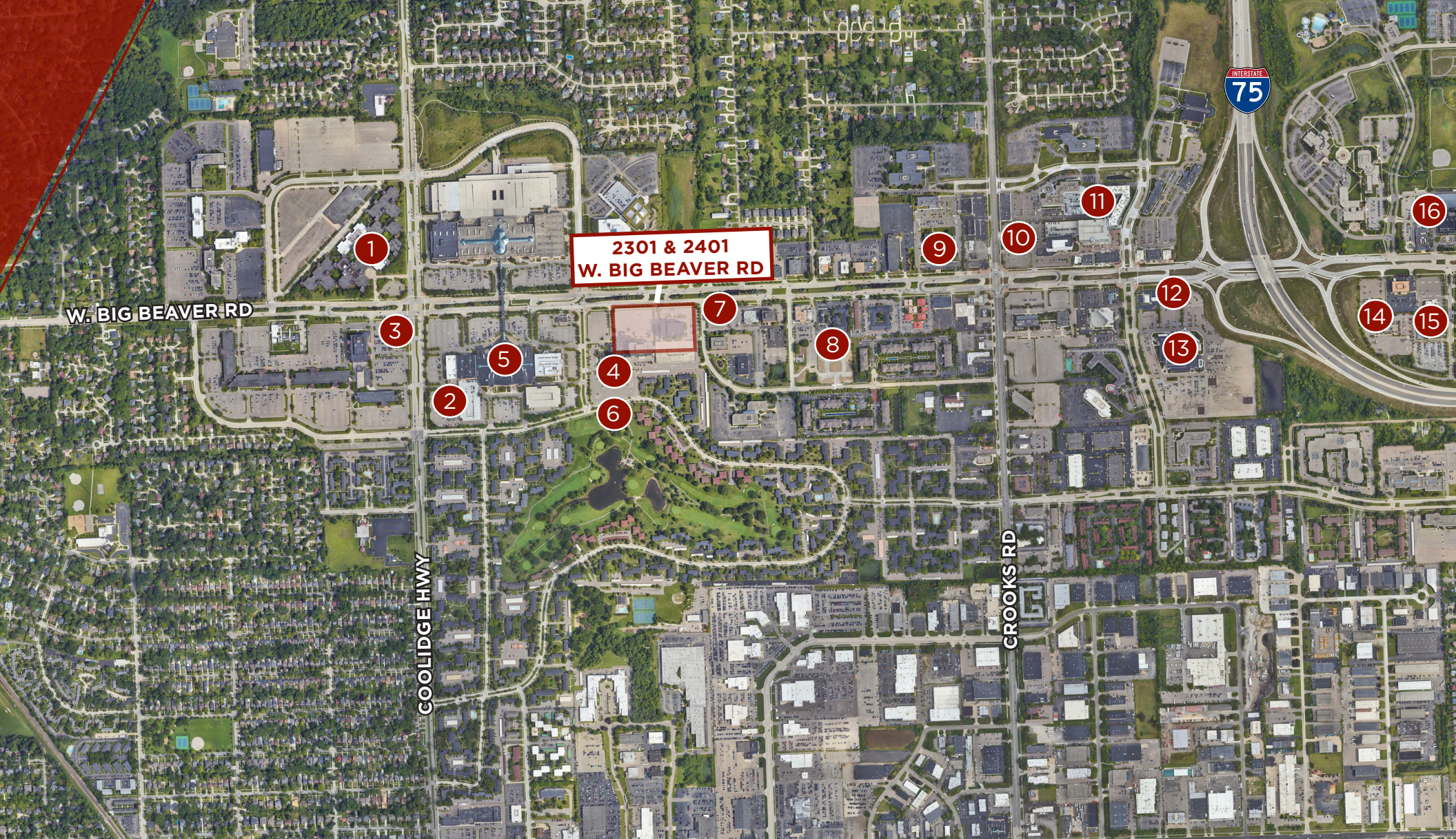
Title

INTERSTATE
75

SOMERSET
GOLF CLUB

Regent's Club

TROY'S GOLDEN CORRIDOR



2301 & 2401
W. BIG BEAVER RD

LIVE WORK PLAY

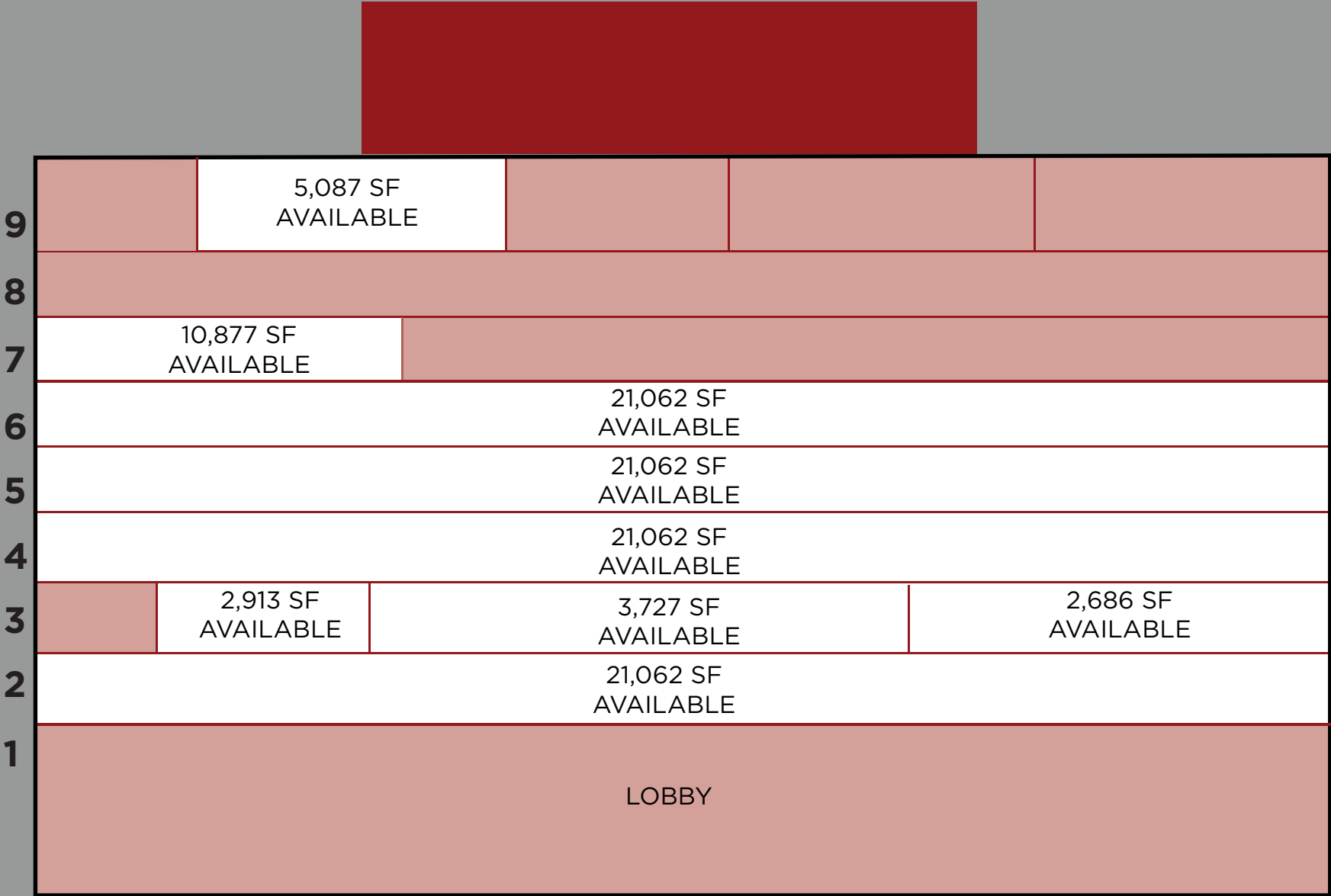
1. FORBES/ U OF M REDEVELOPMENT
2. DRAFT KINGS SPORTS & SOCIAL
3. OCEAN PRIME
4. SOMERSET INN
5. SOMERSET COLLECTION
6. SOMERSET GOLF CLUB
7. MAGGIANO'S LITTLE ITALY

8. BENIHANA
9. PAPA ROMANO'S
10. SEASON'S 52
11. HILTON GARDEN INN
12. GRANITE CITY
13. RUTH'S CHRIS STEAKHOUSE
14. DRURY INN

15. FOGO DE CHAO BRAZILIAN STEAKHOUSE
16. DETROIT MARRIOTT OF TROY

2301 W. Big Beaver Rd
192,564 SF

● LEASED
○ AVAILABLE



STACKING PLAN I

2401 W. Big Beaver Rd
163,866 SF

● LEASED
○ AVAILABLE



7

23,448 SF
AVAILABLE

6

23,448 SF
AVAILABLE

5

23,448 SF
AVAILABLE

4

23,448 SF
AVAILABLE

3

23,448 SF
AVAILABLE

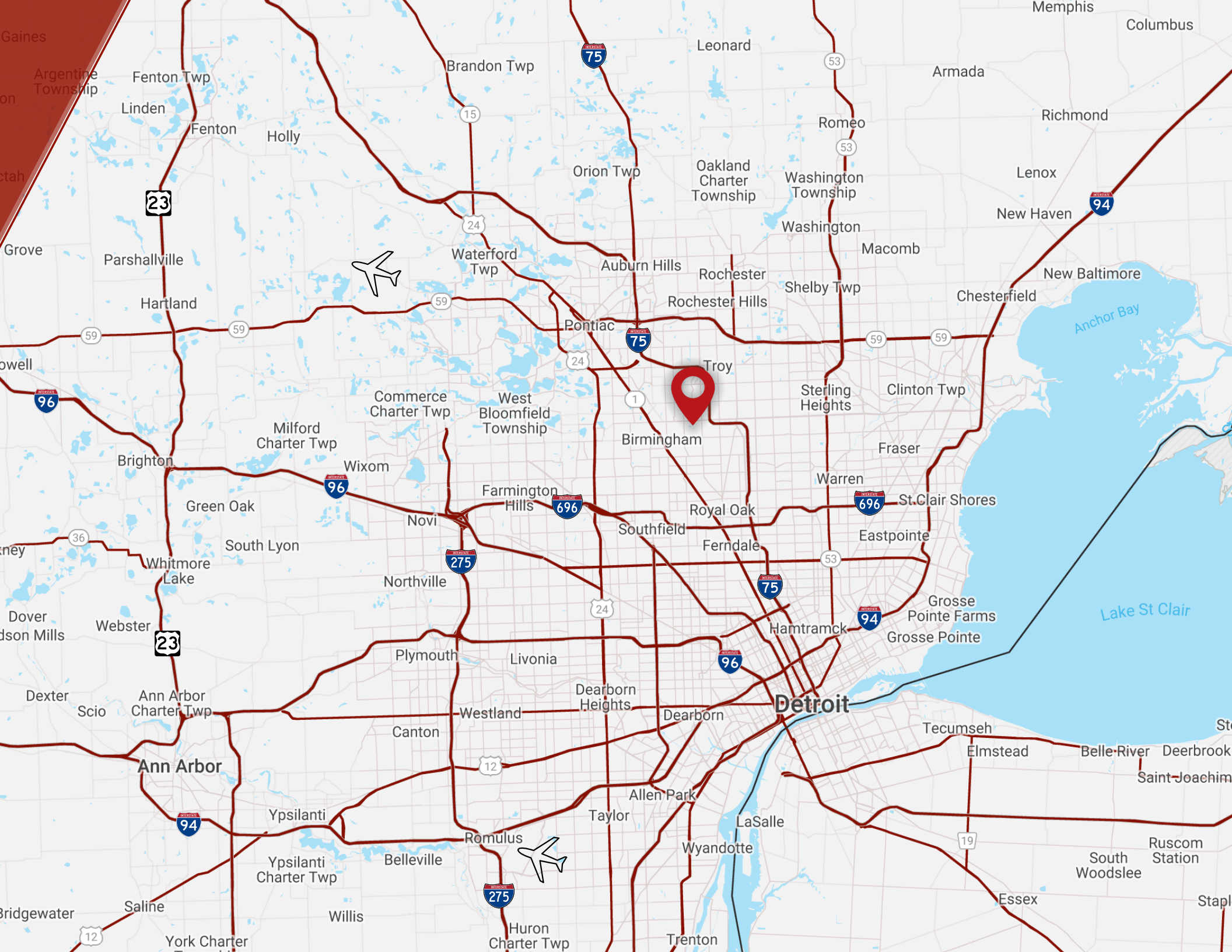
2

23,448 SF
AVAILABLE

1

LOBBY

STACKING PLAN II



Detroit

Ann Arbor

Brandon Twp

Leonard

Armada

Richmond

Lenox

New Haven

New Baltimore

Chesterfield

Orion Twp

Oakland Charter Township

Washington Township

Washington

Macomb

Auburn Hills

Rochester

Shelby Twp

Pontiac

Rochester Hills

59

59

1

Troy

Sterling Heights

Clinton Twp

Milford Charter Twp

Wixom

Commerce Charter Twp

West Bloomfield Township

Birmingham

Fraser

Brighton

Green Oak

Novi

Farmington Hills

696

Royal Oak

Warren

696

St. Clair Shores

36

Whitmore Lake

South Lyon

Novi

Novi

Southfield

Ferndale

53

53

Eastpointe

94

Grosse Pointe Farms

Grosse Pointe

Lake St Clair

Dover

Dixon Mills

Webster

23

Northville

24

75

96

Hamtramck

94

Grosse Pointe Farms

Grosse Pointe

Dexter

Scio

Ann Arbor Charter Twp

Canton

Westland

Dearborn Heights

Dearborn

Detroit

Tecumseh

Elmstead

Belle River

Deerbrook

Saint Joachim

Ann Arbor

Ypsilanti

Romulus

Taylor

Allen Park

Wyandotte

LaSalle

19

South Woodslee

Ruscom Station

Bridgewater

12

Saline

York Charter

Willis

Belleville

Huron Charter Twp

Trenton

Essex

Staple



CONTACT:

GARRETT KEAIS

Executive Managing Director

+1 248 358 6112

garrett.keais@cushwake.com

JOHN VANNOORD

Senior Associate

+1 248 358 6106

john.vannoord@cushwake.com

